

V&V Reference Report

L2 ASCDS Version : 7.6.7.1

Observation 59380 - L2 Version 002
Chandra X-Ray Center

L2 Processing Date : Apr 2 2006

Contents

1	Front	2
2	OBI	3
2.1	OBI	3
2.1.1	Images	3
2.1.2	Bias	3
2.1.3	Parameters	4
2.1.4	Events	4
2.2	Compared Parameters	5
2.3	Aspect	6
2.4	Star Slots	8
2.5	FID Slots	8
A	Summary	9
A.1	Status	9
A.2	Comments	9

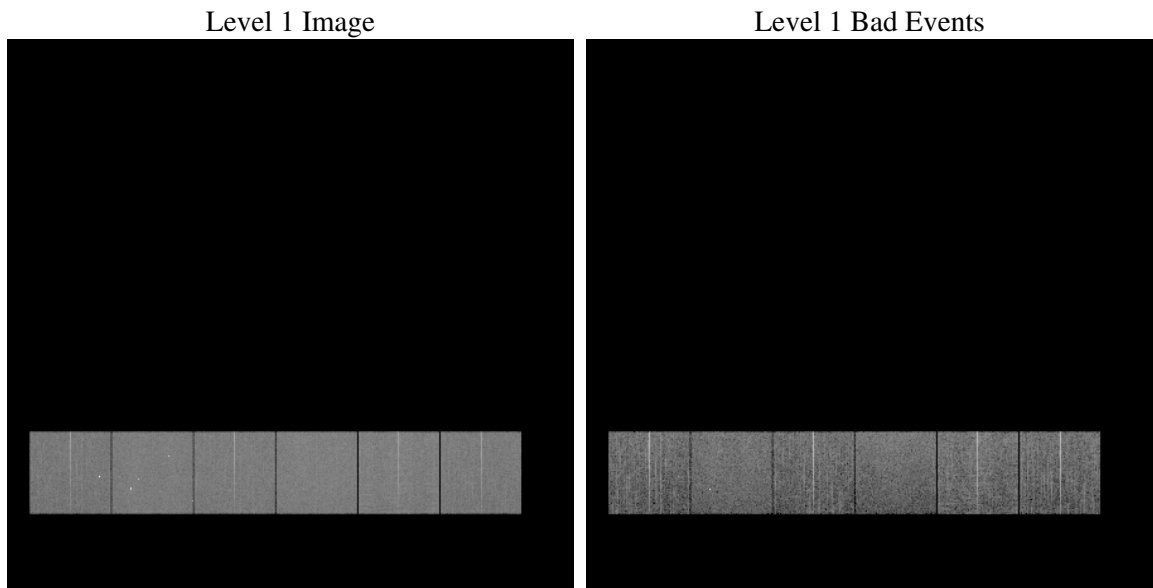
1 Front

seq_num	
obs_id	59380
title	ACIS-456789 diagnostics
observer	CHANDRA engineering request/realtime commanding
object	
dtcycle	0
cycle	P
ra_targ	0.0
dec_targ	0.0
ra_nom	30.028691830996
dec_nom	-17.978817290711
roll_nom	13.668331232021
revision	2
ontime	7798.3999709487
livetime	7699.6519348838
ontime4	7085.383995682
ontime5	7798.3999709487
ontime6	7535.8804666698
ontime7	7798.3999709487
ontime8	7691.4475212395
ontime9	7471.0609002709
l2events	968075

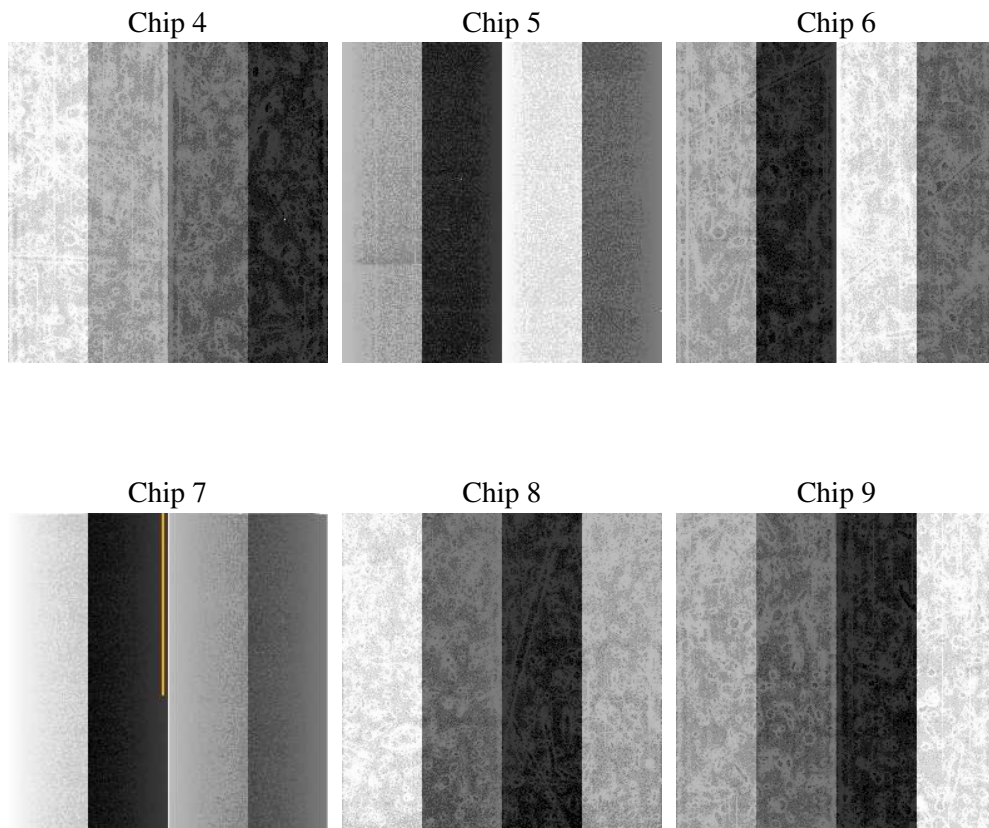
2 OBI

2.1 OBI

2.1.1 Images



2.1.2 Bias



2.1.3 Parameters

obi_num	0
ascdsver	7.6.7.1
caldsver	3.2.1
date	2006-04-02T23:14:07
revision	2

sched_exp_time	0.0
ontime	7801.1092692614
ontime4	7088.0932939947
ontime5	7801.1092692614
ontime6	7538.5897649825
ontime7	7801.1092692614
ontime8	7694.1568195522
ontime9	7473.7701985836
l1events	1399271

2.1.4 Events

	ccd 4	ccd 5	ccd 6	ccd 7	ccd 8	ccd 9
level 1 events	211243	236551	231649	247243	248585	224000
rejected events	59567	61840	59274	58551	66110	59508
rejected %	28%	26%	25%	23%	26%	26%

	ccd 4	ccd 5	ccd 6	ccd 7	ccd 8	ccd 9
grade 0 events	88004	19403	93043	31825	97489	90185
	41%	8%	40%	12%	39%	40%
grade 1 events	694	115	539	112	539	580
	0%	0%	0%	0%	0%	0%
grade 2 events	23862	79914	30197	56446	32328	28071
	11%	33%	13%	22%	13%	12%
grade 3 events	10035	5319	10783	13646	12259	10626
	4%	2%	4%	5%	4%	4%
grade 4 events	10106	5264	10646	13232	12037	10729
	4%	2%	4%	5%	4%	4%
grade 5 events	3199	5944	3805	6880	4615	3876
	1%	2%	1%	2%	1%	1%
grade 6 events	19729	64880	27766	73629	28445	24945
	9%	27%	11%	29%	11%	11%
grade 7 events	55614	55712	54870	51473	60873	54988
	26%	23%	23%	20%	24%	24%

2.2 Compared Parameters

Parameter	Planned	Actual	Parameter	Planned	Actual
Instrument	ACIS	ACIS	Obspar format version number	6	6
Detector	ACIS-456789	ACIS-456789	Obspar file type	PREDICTED	ACTUAL
Grating	NONE	NONE	Obspar update status	NONE	UPDATED
Data mode	FAINT	FAINT	On-chip summing requested	N	N
Observation mode	SECONDARY	SECONDARY	Subarray requested	NONE	NONE
Pointing RA	0	30.02869183099592	Alternating exposures requested	N	N
Pointing Dec	0	-17.97881729071062	Primary exposure time	3.2	3.2
Pointing Roll	0.0	13.66833123202096			
SIM focus pos (mm)	-0.684267	-0.6828225247311905			
SIM defocus (mm)	0	0.8505141146731063			
SIM translation stage pos (mm)	-190.132523	250.466033080201			
SIM translation stage offset (mm)	0	-0.01005468664627074			
Observation start time	246042384.73193	246042383.70694			
Observation start date	2005-10-18T17:06:25	2005-10-18T17:06:23			
Observation end time	246085756.583937	246085755.55894			
Observation end date	2005-10-19T05:09:17	2005-10-19T05:09:15			
Read mode	TIMED	TIMED			

2.3 Aspect

2.4 Star Slots

2.5 FID Slots

A Summary

A.1 Status

V&V Scientist	Jen Lauer
V&V Date (YYYY-MM-DD)	2006.04.03
V&V Edition	1
V&V Disposition and Status	OK
V&V Charge Time	7.79839997

A.2 Comments