

V&V Reference Report

L2 ASCDS Version : 7.6.7.1

Observation 59373 - L2 Version 002
Chandra X-Ray Center

L2 Processing Date : Apr 2 2006

Contents

1	Front	2
2	OBI	3
2.1	OBI	3
2.1.1	Images	3
2.1.2	Bias	3
2.1.3	Parameters	4
2.1.4	Events	4
2.2	Compared Parameters	5
2.3	Aspect	6
2.4	Star Slots	8
2.5	FID Slots	8
A	Summary	9
A.1	Status	9
A.2	Comments	9

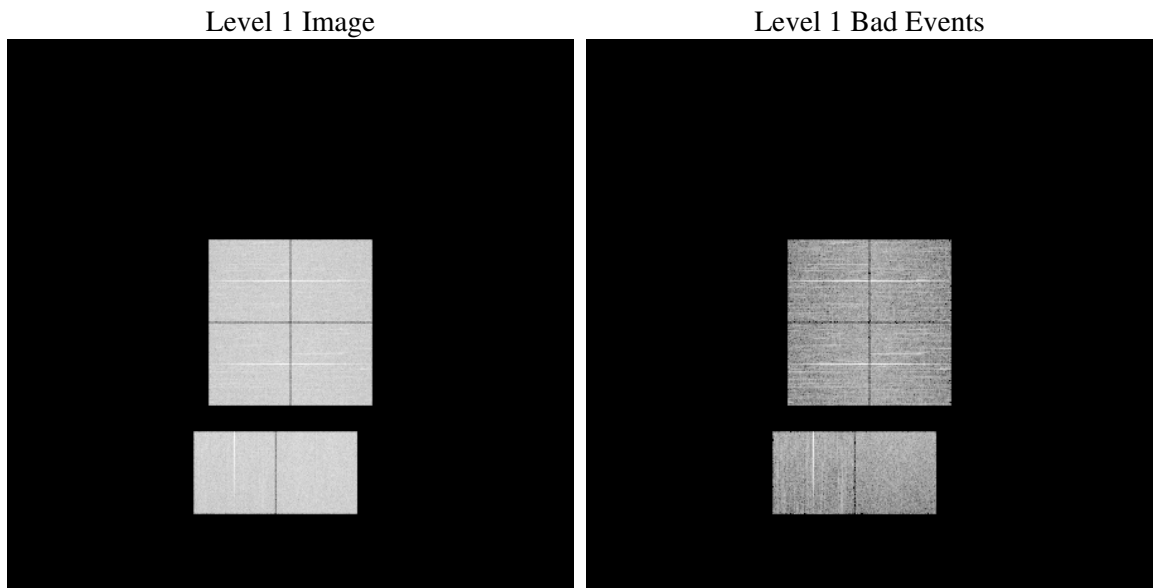
1 Front

seq_num	
obs_id	59373
title	ACIS-012367 diagnostics
observer	CHANDRA engineering request/realtime commanding
object	
dtcycle	0
cycle	P
ra_targ	0.0
dec_targ	0.0
ra_nom	30.024361377076
dec_nom	-17.983208517571
roll_nom	3.0991505339064
revision	2
ontime	7798.3999709487
livetime	7699.6519348838
ontime0	7798.3999709487
ontime1	7798.3999709487
ontime2	7798.3999709487
ontime3	7798.3999709487
ontime6	7798.3999709487
ontime7	7798.3999709487
l2events	984538

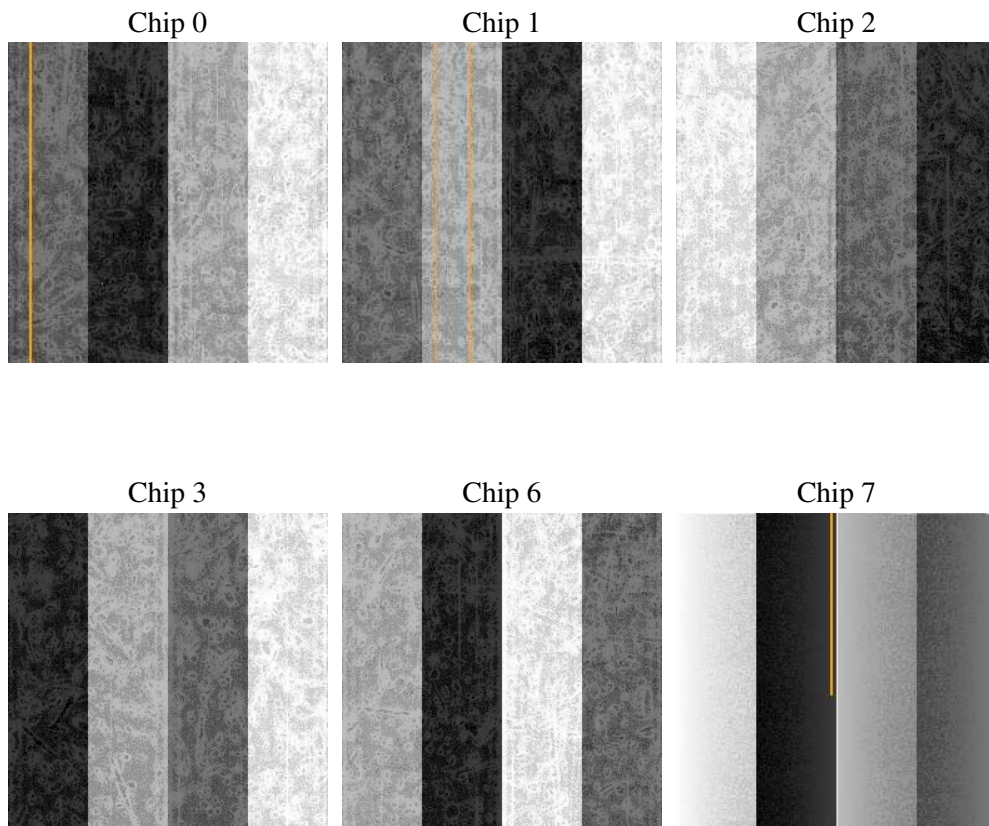
2 OBI

2.1 OBI

2.1.1 Images



2.1.2 Bias



2.1.3 Parameters

obi_num	0
ascdsver	7.6.7.1
caldbver	3.2.1
date	2006-04-03T00:26:58
revision	2

sched_exp_time	0.0
ontime	7801.0965293348
ontime0	7801.0965293348
ontime1	7801.0965293348
ontime2	7801.0965293348
ontime3	7801.0965293348
ontime6	7801.0965293348
ontime7	7801.0965293348
l1events	1389476

2.1.4 Events

	ccd 0	ccd 1	ccd 2	ccd 3	ccd 6	ccd 7
level 1 events	224797	224165	229856	230738	235707	244213
rejected events	57653	55966	60138	61552	60206	57601
rejected %	25%	24%	26%	26%	25%	23%

	ccd 0	ccd 1	ccd 2	ccd 3	ccd 6	ccd 7
grade 0 events	91191	91341	94376	94746	94421	31537
	40%	40%	41%	41%	40%	12%
grade 1 events	567	482	638	625	505	106
	0%	0%	0%	0%	0%	0%
grade 2 events	29413	30260	28832	29056	30814	55413
	13%	13%	12%	12%	13%	22%
grade 3 events	10964	10854	11162	10949	11137	13463
	4%	4%	4%	4%	4%	5%
grade 4 events	10885	10800	11175	11170	10991	13351
	4%	4%	4%	4%	4%	5%
grade 5 events	3358	3469	3180	3858	3744	6818
	1%	1%	1%	1%	1%	2%
grade 6 events	24749	25010	24234	23333	28218	72933
	11%	11%	10%	10%	11%	29%
grade 7 events	53670	51949	56259	57001	55877	50592
	23%	23%	24%	24%	23%	20%

2.2 Compared Parameters

Parameter	Planned	Actual	Parameter	Planned	Actual
Instrument	ACIS	ACIS	Obspar format version number	6	6
Detector	ACIS-012367	ACIS-012367	Obspar file type	PREDICTED	ACTUAL
Grating	NONE	NONE	Obspar update status	NONE	UPDATED
Data mode	FAINT	FAINT	On-chip summing requested	N	N
Observation mode	SECONDARY	SECONDARY	Subarray requested	NONE	NONE
Pointing RA	0	30.02436137707631	Alternating exposures requested	N	N
Pointing Dec	0	-17.98320851757104	Primary exposure time	3.2	3.2
Pointing Roll	0.0	3.099150533906364			
SIM focus pos (mm)	-0.782348	-0.6828225247311905			
SIM defocus (mm)	0	0.8505141146731063			
SIM translation stage pos (mm)	-233.592463	250.466033080201			
SIM translation stage offset (mm)	0	-0.01005468664627074			
Observation start time	246500344.503051	246500343.47805			
Observation start date	2005-10-24T00:19:05	2005-10-24T00:19:03			
Observation end time	246513665.403665	246513664.37866			
Observation end date	2005-10-24T04:01:05	2005-10-24T04:01:04			
Read mode	TIMED	TIMED			

2.3 Aspect

2.4 Star Slots

2.5 FID Slots

A Summary

A.1 Status

V&V Scientist	Jen Lauer
V&V Date (YYYY-MM-DD)	2006.04.03
V&V Edition	1
V&V Disposition and Status	OK
V&V Charge Time	7.79839997

A.2 Comments