

# V&V Reference Report

## L2 ASCDS Version : 7.6.7.1

Observation 59349 - L2 Version 002  
Chandra X-Ray Center

L2 Processing Date : Apr 5 2006

## Contents

<b>1</b>	<b>Front</b>	<b>2</b>
<b>2</b>	<b>OBI</b>	<b>3</b>
2.1	OBI . . . . .	3
2.1.1	Images . . . . .	3
2.1.2	Bias . . . . .	3
2.1.3	Parameters . . . . .	4
2.1.4	Events . . . . .	4
2.2	Compared Parameters . . . . .	5
2.3	Aspect . . . . .	6
2.4	Star Slots . . . . .	8
2.5	FID Slots . . . . .	8
<b>A</b>	<b>Summary</b>	<b>9</b>
A.1	Status . . . . .	9
A.2	Comments . . . . .	9

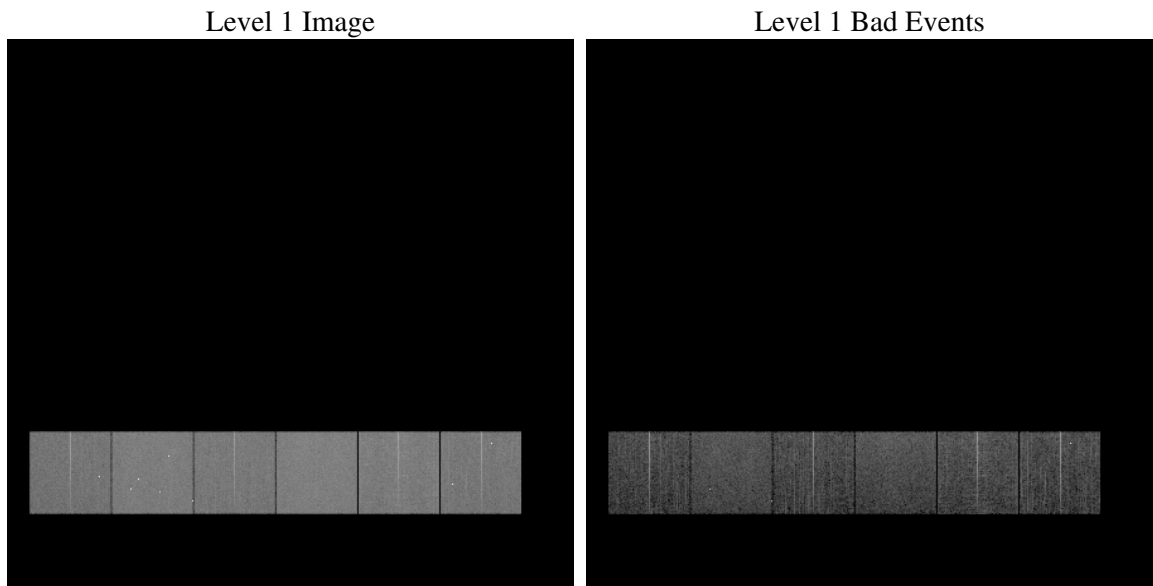
# 1 Front

seq_num	&#160
obs_id	59349
title	ACIS-456789 diagnostics
observer	CHANDRA engineering request/realtime commanding
object	&#160
dtcycle	0
cycle	P
ra_targ	0.0
dec_targ	0.0
ra_nom	23.982118034928
dec_nom	42.974552540345
roll_nom	210.01428670595
revision	2
ontime	7828.8152360618
livetime	7729.6820635962
ontime4	6276.5081959963
ontime5	7828.8562760651
ontime6	6791.7836205661
ontime7	7828.8152360618
ontime8	7086.7949876189
ontime9	6694.430932045
l2events	981293

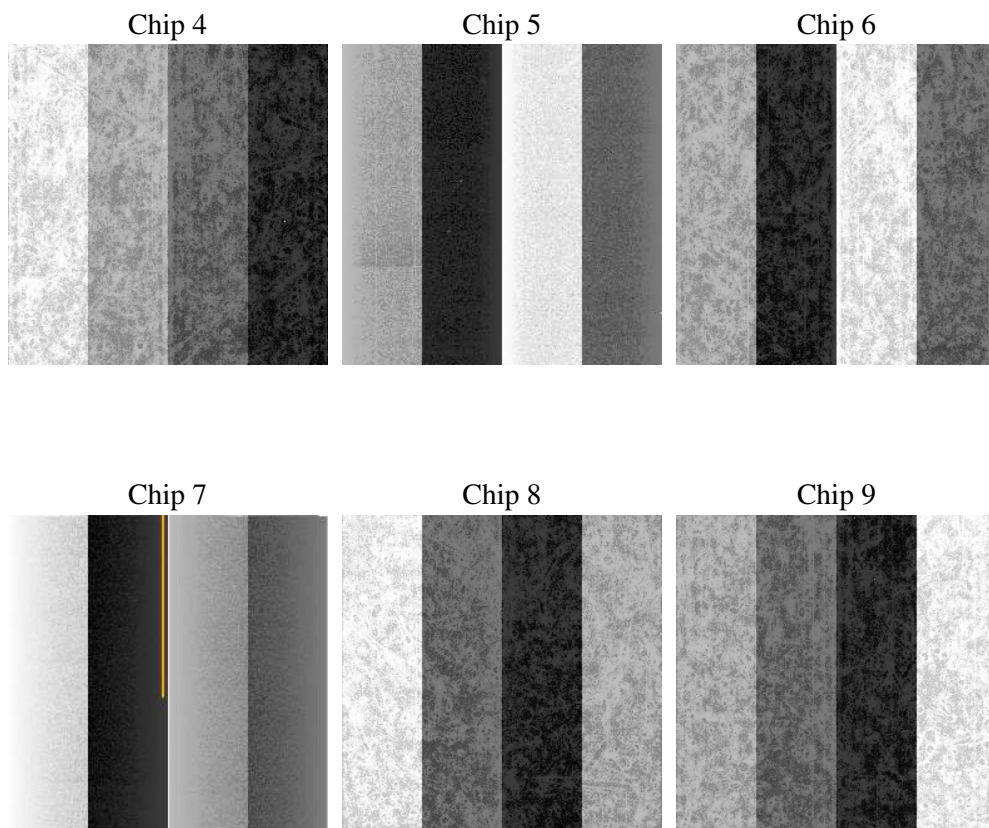
## 2 OBI

### 2.1 OBI

#### 2.1.1 Images



#### 2.1.2 Bias



### 2.1.3 Parameters

obi_num	0
ascdsver	7.6.7.1
caldsver	3.2.1
date	2006-04-05T15:10:53
revision	2

sched_exp_time	0.0
ontime	7830.2790710926
ontime4	6277.8489110172
ontime5	7830.2790710926
ontime6	6793.1653755903
ontime7	7830.2790710926
ontime8	7088.0946626663
ontime9	6695.9358070791
l1events	1407498

### 2.1.4 Events

	ccd 4	ccd 5	ccd 6	ccd 7	ccd 8	ccd 9
level 1 events	199184	253129	223726	263191	247630	220638
rejected events	53217	63748	55677	61246	63161	58474
rejected %	26%	25%	24%	23%	25%	26%

	ccd 4	ccd 5	ccd 6	ccd 7	ccd 8	ccd 9
grade 0 events	83765	23020	89502	33001	96886	88192
	42%	9%	40%	12%	39%	39%
grade 1 events	740	224	535	92	647	2593
	0%	0%	0%	0%	0%	1%
grade 2 events	22811	86146	29052	62880	32706	27144
	11%	34%	12%	23%	13%	12%
grade 3 events	9610	5815	10366	13456	11991	10483
	4%	2%	4%	5%	4%	4%
grade 4 events	9858	5538	10402	13133	11911	10214
	4%	2%	4%	4%	4%	4%
grade 5 events	3027	6379	3352	6979	4425	3538
	1%	2%	1%	2%	1%	1%
grade 6 events	19923	68862	28727	79475	30975	26131
	10%	27%	12%	30%	12%	11%
grade 7 events	49450	57145	51790	54175	58089	52343
	24%	22%	23%	20%	23%	23%

## 2.2 Compared Parameters

Parameter	Planned	Actual	Parameter	Planned	Actual
Instrument	ACIS	ACIS	Obspar format version number	6	6
Detector	ACIS-456789	ACIS-456789	Obspar file type	PREDICTED	ACTUAL
Grating	NONE	NONE	Obspar update status	NONE	UPDATED
Data mode	FAINT	FAINT	On-chip summing requested	N	N
Observation mode	SECONDARY	SECONDARY	Subarray requested	NONE	NONE
Pointing RA	0	23.98211803492786	Alternating exposures requested	N	N
Pointing Dec	0	42.97455254034481	Primary exposure time	3.2	3.2
Pointing Roll	0.0	210.0142867059516			
SIM focus pos (mm)	-0.684267	-1.428180813131781			
SIM defocus (mm)	0	0.1051558262725154			
SIM translation stage pos (mm)	-190.132523	250.466033080201			
SIM translation stage offset (mm)	0	-0.01005468664627074			
Observation start time	247457604.347164	247457603.32217			
Observation start date	2005-11-04T02:13:24	2005-11-04T02:13:23			
Observation end time	247478473.348126	247478472.32314			
Observation end date	2005-11-04T08:01:13	2005-11-04T08:01:12			
Read mode	TIMED	TIMED			

## 2.3 Aspect



## **2.4 Star Slots**

## **2.5 FID Slots**



## A Summary

### A.1 Status

V&V Scientist	Beth Sundheim
V&V Date (YYYY-MM-DD)	2006.04.05
V&V Edition	1
V&V Disposition and Status	OK
V&V Charge Time	7.82881523

### A.2 Comments