

# V&V Reference Report

## L2 ASCDS Version : 7.6.7.1

Observation 59336 - L2 Version 002  
Chandra X-Ray Center

L2 Processing Date : Apr 5 2006

## Contents

<b>1</b>	<b>Front</b>	<b>2</b>
<b>2</b>	<b>OBI</b>	<b>3</b>
2.1	OBI . . . . .	3
2.1.1	Images . . . . .	3
2.1.2	Bias . . . . .	3
2.1.3	Parameters . . . . .	4
2.1.4	Events . . . . .	4
2.2	Compared Parameters . . . . .	5
2.3	Aspect . . . . .	6
2.4	Star Slots . . . . .	8
2.5	FID Slots . . . . .	8
<b>A</b>	<b>Summary</b>	<b>9</b>
A.1	Status . . . . .	9
A.2	Comments . . . . .	9

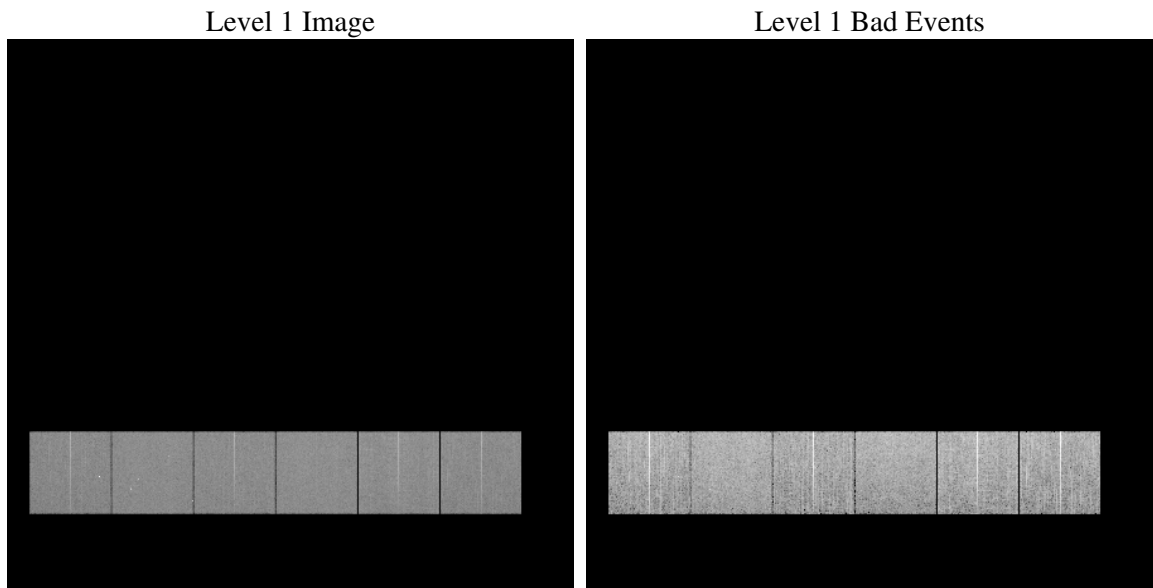
# 1 Front

seq_num	&#160
obs_id	59336
title	ACIS-456789 diagnostics
observer	CHANDRA engineering request/realtime commanding
object	&#160
dtcycle	0
cycle	P
ra_targ	0.0
dec_targ	0.0
ra_nom	60.11168174726
dec_nom	-6.673866623937
roll_nom	33.022376653437
revision	2
ontime	7609.599971652
livetime	7513.24263486
ontime4	7282.2607414424
ontime5	7609.599971652
ontime6	7554.5032365918
ontime7	7609.599971652
ontime8	7609.599971652
ontime9	7447.550816685
l2events	937998

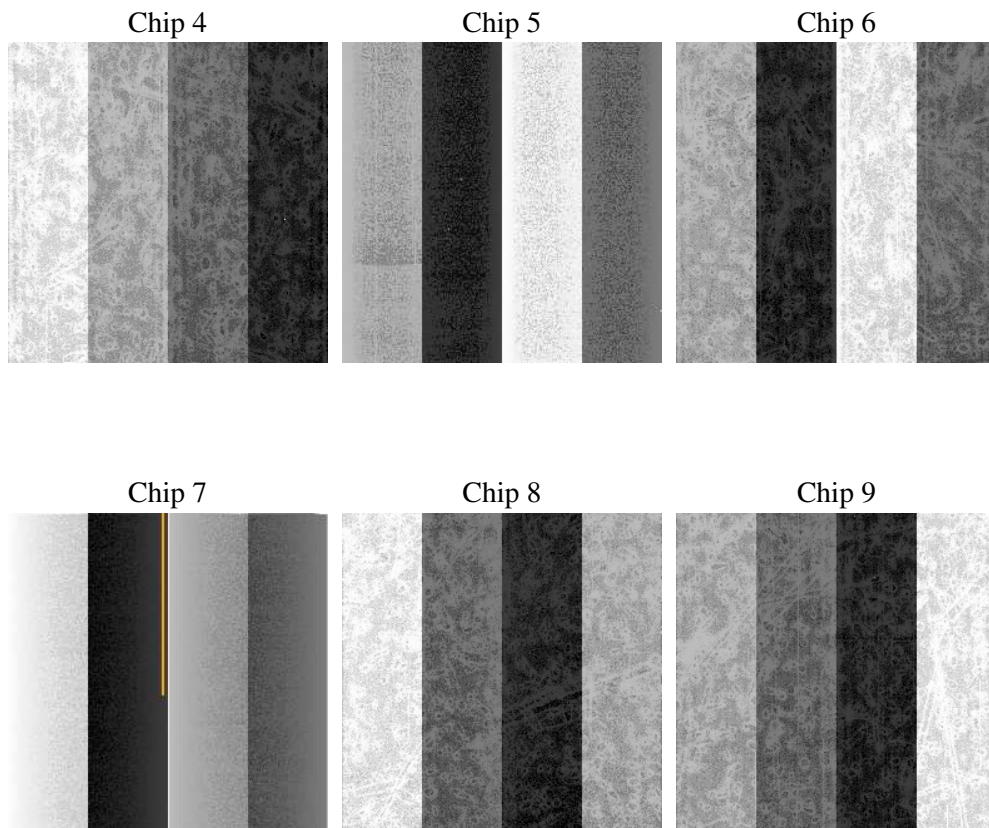
## 2 OBI

### 2.1 OBI

#### 2.1.1 Images



#### 2.1.2 Bias



### 2.1.3 Parameters

obi_num	0
ascdsver	7.6.7.1
caldsver	3.2.1
date	2006-04-05T20:01:29
revision	2

sched_exp_time	0.0
ontime	7677.952794224
ontime4	7347.3726036251
ontime5	7677.952794224
ontime6	7616.3740885854
ontime7	7677.952794224
ontime8	7677.952794224
ontime9	7515.903639257
l1events	1375031

### 2.1.4 Events

	ccd 4	ccd 5	ccd 6	ccd 7	ccd 8	ccd 9
level 1 events	213282	228325	227895	239879	243627	222023
rejected events	62011	62627	59805	60468	67291	62366
rejected %	29%	27%	26%	25%	27%	28%

	ccd 4	ccd 5	ccd 6	ccd 7	ccd 8	ccd 9
grade 0 events	88608	16875	91879	29245	95712	88357
	41%	7%	40%	12%	39%	39%
grade 1 events	763	96	500	107	546	554
	0%	0%	0%	0%	0%	0%
grade 2 events	23987	76779	29309	54827	31406	27800
	11%	33%	12%	22%	12%	12%
grade 3 events	10338	4991	10458	12570	11862	10237
	4%	2%	4%	5%	4%	4%
grade 4 events	10198	4796	10677	12330	11859	10389
	4%	2%	4%	5%	4%	4%
grade 5 events	3349	5716	3679	6757	4447	3910
	1%	2%	1%	2%	1%	1%
grade 6 events	19508	63727	27168	72054	27092	24334
	9%	27%	11%	30%	11%	10%
grade 7 events	56531	55345	54225	51989	60703	56442
	26%	24%	23%	21%	24%	25%

## 2.2 Compared Parameters

Parameter	Planned	Actual	Parameter	Planned	Actual
Instrument	ACIS	ACIS	Obspar format version number	6	6
Detector	ACIS-456789	ACIS-456789	Obspar file type	PREDICTED	ACTUAL
Grating	NONE	NONE	Obspar update status	NONE	UPDATED
Data mode	FAINT	FAINT	On-chip summing requested	N	N
Observation mode	SECONDARY	SECONDARY	Subarray requested	NONE	NONE
Pointing RA	0	60.11168174725966	Alternating exposures requested	N	N
Pointing Dec	0	-6.673866623937038	Primary exposure time	3.2	3.2
Pointing Roll	0.0	33.0223766534372			
SIM focus pos (mm)	-0.684267	-0.7809083437167272			
SIM defocus (mm)	0	0.7524282956875696			
SIM translation stage pos (mm)	-190.132523	250.466033080201			
SIM translation stage offset (mm)	0	-0.01005468664627074			
Observation start time	247913042.618198	247913041.59319			
Observation start date	2005-11-09T08:44:03	2005-11-09T08:44:01			
Observation end time	247933753.769154	247933752.74415			
Observation end date	2005-11-09T14:29:14	2005-11-09T14:29:12			
Read mode	TIMED	TIMED			

## 2.3 Aspect



## **2.4 Star Slots**

## **2.5 FID Slots**



## A Summary

### A.1 Status

V&V Scientist	Beth Sundheim
V&V Date (YYYY-MM-DD)	2006.04.05
V&V Edition	1
V&V Disposition and Status	OK
V&V Charge Time	7.60959997

### A.2 Comments