

# V&V Reference Report

## L2 ASCDS Version : 8.4.3

Observation 59313 - L2 Version 2  
Chandra X-Ray Center

L2 Processing Date : Mar 16 2012

## Contents

<b>1</b>	<b>Front</b>	<b>2</b>
<b>2</b>	<b>OBI</b>	<b>3</b>
2.1	OBI . . . . .	3
2.1.1	Images . . . . .	3
2.1.2	Bias . . . . .	3
2.1.3	Parameters . . . . .	4
2.1.4	Events . . . . .	4
2.2	Compared Parameters . . . . .	5
2.3	Star Slots . . . . .	6
2.4	FID Slots . . . . .	6
<b>A</b>	<b>Summary</b>	<b>7</b>
A.1	Status . . . . .	7
A.2	Comments . . . . .	7

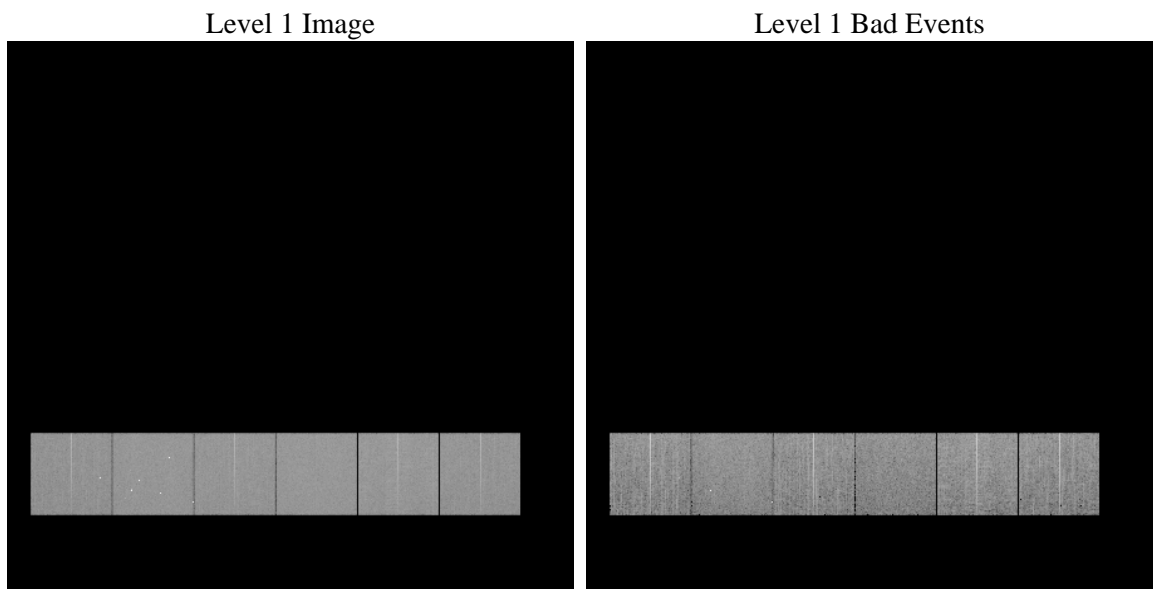
# 1 Front

seq_num	&#160	Sequence number
obs_id	59313	Observation id
title	ACIS-456789 diagnostics	Proposal title
observer	CHANDRA engineering request/realtime commanding	Principal investig
object	&#160	Source name
dtcycle	0	&#160
cycle	P	events from which exps? Prim/Second/Both
ra_targ	0.0	Observer's specified target RA [deg]
dec_targ	0.0	Observer's specified target Dec [deg]
ra_nom	77.772416114558	Nominal RA [deg]
dec_nom	32.016499879293	Nominal Dec [deg]
roll_nom	111.91974015719	Nominal Roll [deg]
revision	2	Processing version of data
ontime	8265.5999692082	Sum of GTIs [s]
livetime	8160.9359654513	Livetime [s]
ontime4	7549.3426835239	Sum of GTIs [s]
ontime5	8265.5999692082	Sum of GTIs [s]
ontime6	8106.7918245792	Sum of GTIs [s]
ontime7	8265.5999692082	Sum of GTIs [s]
ontime8	8252.6360478997	Sum of GTIs [s]
ontime9	7944.7426901162	Sum of GTIs [s]
l2events	1019319	Number of level 2 events

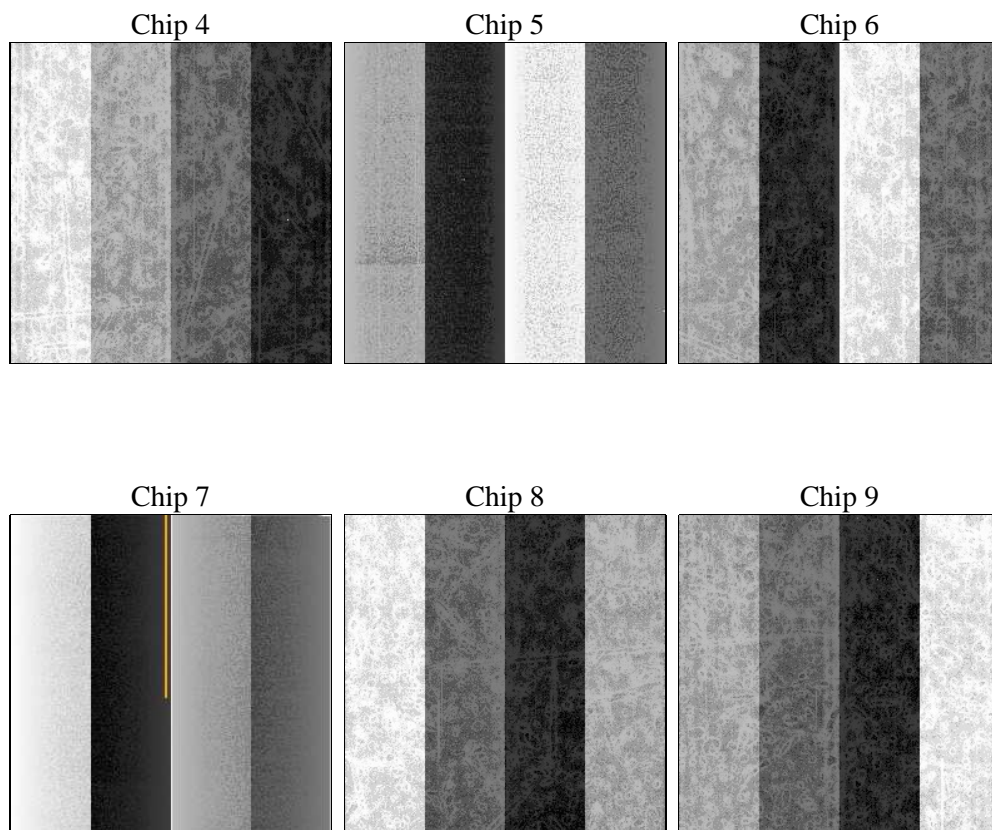
## 2 OBI

### 2.1 OBI

#### 2.1.1 Images



#### 2.1.2 Bias



### 2.1.3 Parameters

obi_num	0	Obi number	sched_exp_time	0.0	[s] Scheduled observation exposure time
ascdsver	8.4.3	Processing system revision	ontime	8265.5999692082	Sum of GTIs [s]
caldsver	4.4.8	&#160	ontime4	7549.3426835239	Sum of GTIs [s]
date	2012-03-17T01:01:26	Date and time of file creation	ontime5	8265.5999692082	Sum of GTIs [s]
revision	2	Processing version of data	ontime6	8106.7918245792	Sum of GTIs [s]
			ontime7	8265.5999692082	Sum of GTIs [s]
			ontime8	8252.6360478997	Sum of GTIs [s]
			ontime9	7944.7426901162	Sum of GTIs [s]
			l1events	1482353	Number of level 1 events

### 2.1.4 Events

	ccd 4	ccd 5	ccd 6	ccd 7	ccd 8	ccd 9		ccd 4	ccd 5	ccd 6	ccd 7	ccd 8	ccd 9
level 1 events	222371	257326	245863	258440	264345	234008	grade 0 events	91758	41502	97164	46964	103089	93558
rejected events	65124	64228	65936	54424	71680	63568		41%	16%	39%	18%	38%	39%
rejected %	29%	24%	26%	21%	27%	27%	grade 1 events	788	380	520	174	618	591
								0%	0%	0%	0%	0%	0%
							grade 2 events	24501	70338	31159	44821	34218	29199
								11%	27%	12%	17%	12%	12%
							grade 3 events	10585	10190	11440	19992	12976	11058
								4%	3%	4%	7%	4%	4%
							grade 4 events	10642	9951	10992	19876	12796	11168
								4%	3%	4%	7%	4%	4%
							grade 5 events	3712	9577	3962	9363	4991	4185
								1%	3%	1%	3%	1%	1%
							grade 6 events	19990	61418	29366	72702	29887	25673
								8%	23%	11%	28%	11%	10%
							grade 7 events	60395	53970	61260	44548	65770	58576
								27%	20%	24%	17%	24%	25%

## 2.2 Compared Parameters

Parameter	Planned	Actual
Instrument	ACIS	ACIS
Detector	ACIS-456789	ACIS-456789
Grating	NONE	NONE
Data mode	FAINT	FAINT
Observation mode	SECONDARY	SECONDARY
[deg] Pointing RA	0	77.77241611455833
[deg] Pointing Dec	0	32.01649987929321
[deg] Pointing Roll	0.0	111.9197401571883
[mm] SIM focus pos	-0.684267	-0.6828225247311905
[mm] SIM defocus	0	0.8505141146731063
[mm] SIM translation stage pos	-190.132523	250.466033080201
[mm] SIM translation stage offset	0	-0.01005468664627074
[s] Observation start time (MET)	248372474.289417	248372473.2644
Observation start date	2005-11-14T16:21:14	2005-11-14T16:21:13
[s] Observation end time (MET)	248395093.990462	248395092.96544
Observation end date	2005-11-14T22:38:14	2005-11-14T22:38:12
Read mode	TIMED	TIMED

Parameter	Planned	Actual
Obspar format version number	7	7
Obspar file type	PREDICTED	ACTUAL
Obspar update status	NONE	UPDATED
On-chip summing requested	N	N
Subarray requested	NONE	NONE
Alternating exposures requested	N	N
[s] Primary exposure time	3.2	3.2

## **2.3 Star Slots**

## **2.4 FID Slots**

## A Summary

### A.1 Status

V&V Scientist	Beth Sundheim
V&V Date (YYYY-MM-DD)	2012.03.18
V&V Edition	1
V&V Disposition and Status	OK
V&V Charge Time	8.2655999692082

### A.2 Comments