

V&V Reference Report

L2 ASCDS Version : 8.4.3

Observation 59245 - L2 Version 2
Chandra X-Ray Center

L2 Processing Date : Mar 20 2012

Contents

1	Front	2
2	OBI	3
2.1	OBI	3
2.1.1	Images	3
2.1.2	Bias	3
2.1.3	Parameters	4
2.1.4	Events	4
2.2	Compared Parameters	5
2.3	Star Slots	6
2.4	FID Slots	6
A	Summary	7
A.1	Status	7
A.2	Comments	7

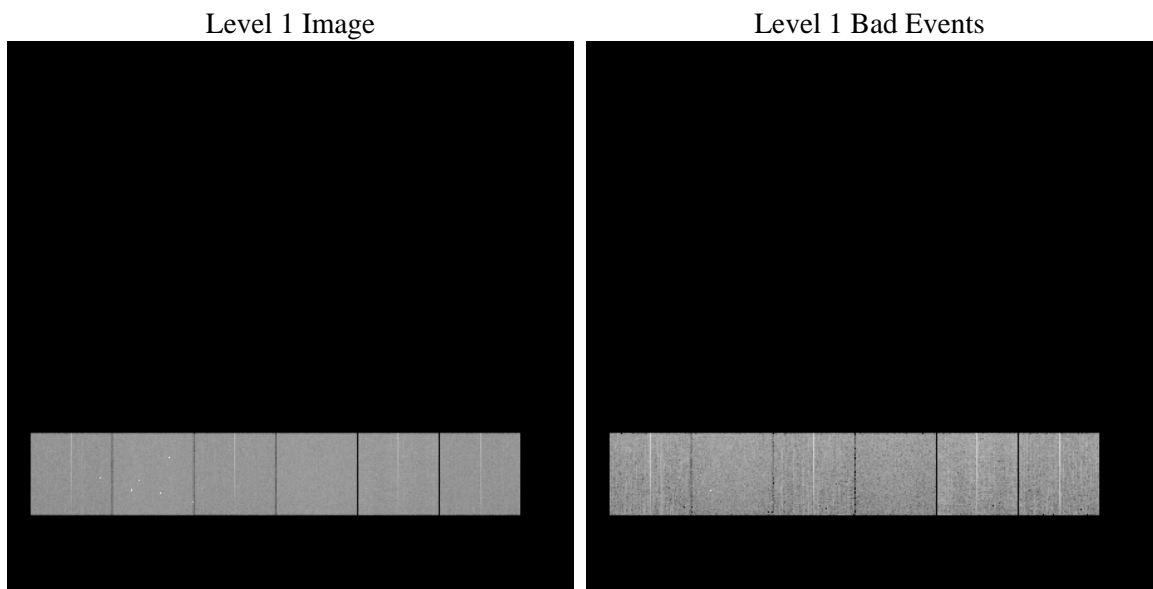
1 Front

seq_num	 	Sequence number
obs_id	59245	Observation id
title	ACIS-456789 diagnostics	Proposal title
observer	CHANDRA engineering request/realtime commanding	Principal investig
object	 	Source name
dtcycle	0	
cycle	P	events from which exps? Prim/Second/Both
ra_targ	0.0	Observer's specified target RA [deg]
dec_targ	0.0	Observer's specified target Dec [deg]
ra_nom	102.96084978407	Nominal RA [deg]
dec_nom	45.00719798597	Nominal Dec [deg]
roll_nom	132.59290779445	Nominal Roll [deg]
revision	2	Processing version of data
ontime	7796.4059561193	Sum of GTIs [s]
livetime	7697.6831694709	Livetime [s]
ontime4	6877.9600748122	Sum of GTIs [s]
ontime5	7798.3999709487	Sum of GTIs [s]
ontime6	7229.315523386	Sum of GTIs [s]
ontime7	7796.4059561193	Sum of GTIs [s]
ontime8	7487.265411824	Sum of GTIs [s]
ontime9	7099.5530216098	Sum of GTIs [s]
l2events	970158	Number of level 2 events

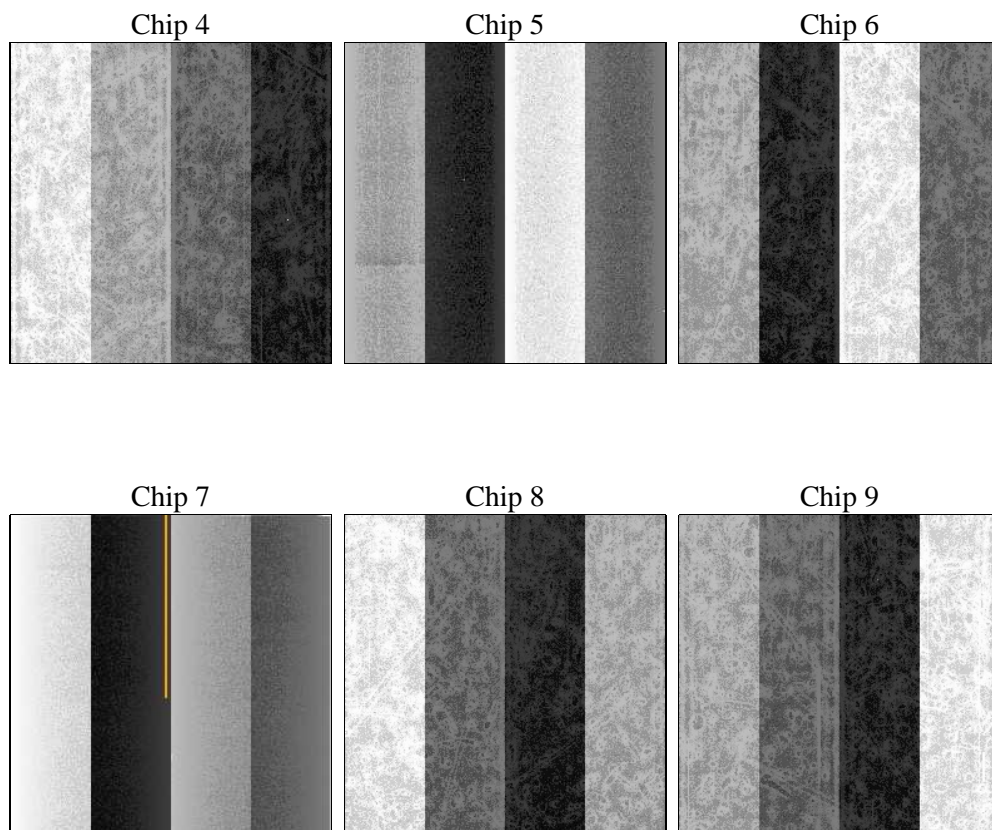
2 OBI

2.1 OBI

2.1.1 Images



2.1.2 Bias



2.1.3 Parameters

obi_num	0	Obi number	sched_exp_time	0.0	[s] Scheduled observation exposure time
ascdsver	8.4.3	Processing system revision	ontime	7796.4059561193	Sum of GTIs [s]
caldsver	4.4.8	 	ontime4	6877.9600748122	Sum of GTIs [s]
date	2012-03-20T03:23:28	Date and time of file creation	ontime5	7798.3999709487	Sum of GTIs [s]
revision	2	Processing version of data	ontime6	7229.315523386	Sum of GTIs [s]
			ontime7	7796.4059561193	Sum of GTIs [s]
			ontime8	7487.265411824	Sum of GTIs [s]
			ontime9	7099.5530216098	Sum of GTIs [s]
			l1events	1401987	Number of level 1 events

2.1.4 Events

	ccd 4	ccd 5	ccd 6	ccd 7	ccd 8	ccd 9		ccd 4	ccd 5	ccd 6	ccd 7	ccd 8	ccd 9
level 1 events	210079	245336	227887	250546	249787	218352	grade 0 events	87016	42450	90329	46143	96472	86103
rejected events	60452	58501	59799	52658	68527	60178		41%	17%	39%	18%	38%	39%
rejected %	28%	23%	26%	21%	27%	27%	grade 1 events	742	789	532	167	573	527
								0%	0%	0%	0%	0%	0%
							grade 2 events	23339	65469	28895	43346	32244	27304
								11%	26%	12%	17%	12%	12%
							grade 3 events	10050	10127	10622	19252	12047	10221
								4%	4%	4%	7%	4%	4%
							grade 4 events	9763	10209	10517	19149	11980	10054
								4%	4%	4%	7%	4%	4%
							grade 5 events	3366	8794	3656	9029	4616	3787
								1%	3%	1%	3%	1%	1%
							grade 6 events	19459	58580	27725	69998	28517	24492
								9%	23%	12%	27%	11%	11%
							grade 7 events	56344	48918	55611	43462	63338	55864
								26%	19%	24%	17%	25%	25%

2.2 Compared Parameters

Parameter	Planned	Actual	Parameter	Planned	Actual
Instrument	ACIS	ACIS	Obspar format version number	7	7
Detector	ACIS-456789	ACIS-456789	Obspar file type	PREDICTED	ACTUAL
Grating	NONE	NONE	Obspar update status	NONE	UPDATED
Data mode	FAINT	FAINT	On-chip summing requested	N	N
Observation mode	SECONDARY	SECONDARY	Subarray requested	NONE	NONE
[deg] Pointing RA	0	102.9608497840717	Alternating exposures requested	N	N
[deg] Pointing Dec	0	45.00719798597019	[s] Primary exposure time	3.2	3.2
[deg] Pointing Roll	0.0	132.5929077944496			
[mm] SIM focus pos	-0.684267	-0.6828225247311905			
[mm] SIM defocus	0	0.8505141146731063			
[mm] SIM translation stage pos	-190.132523	250.466033080201			
[mm] SIM translation stage offset	0	-0.01005468664627074			
[s] Observation start time (MET)	250843173.353566	250843172.32857			
Observation start date	2005-12-13T06:39:33	2005-12-13T06:39:32			
[s] Observation end time (MET)	250860098.154349	250860097.12935			
Observation end date	2005-12-13T11:21:38	2005-12-13T11:21:37			
Read mode	TIMED	TIMED			

2.3 Star Slots

2.4 FID Slots

A Summary

A.1 Status

V&V Scientist	Jen Lauer
V&V Date (YYYY-MM-DD)	2012.03.20
V&V Edition	1
V&V Disposition and Status	OK
V&V Charge Time	7.7964059561193

A.2 Comments