

V&V Reference Report

L2 ASCDS Version : 8.4.5

Observation 60375 - L2 Version 3
Chandra X-Ray Center

L2 Processing Date : Nov 11 2012

Contents

1	Front	2
2	OBI	3
2.1	OBI	3
2.1.1	Images	3
2.1.2	Bias	3
2.1.3	Parameters	4
2.1.4	Events	4
2.2	Compared Parameters	5
2.3	Star Slots	6
2.4	FID Slots	6
A	Summary	7
A.1	Status	7
A.2	Comments	7

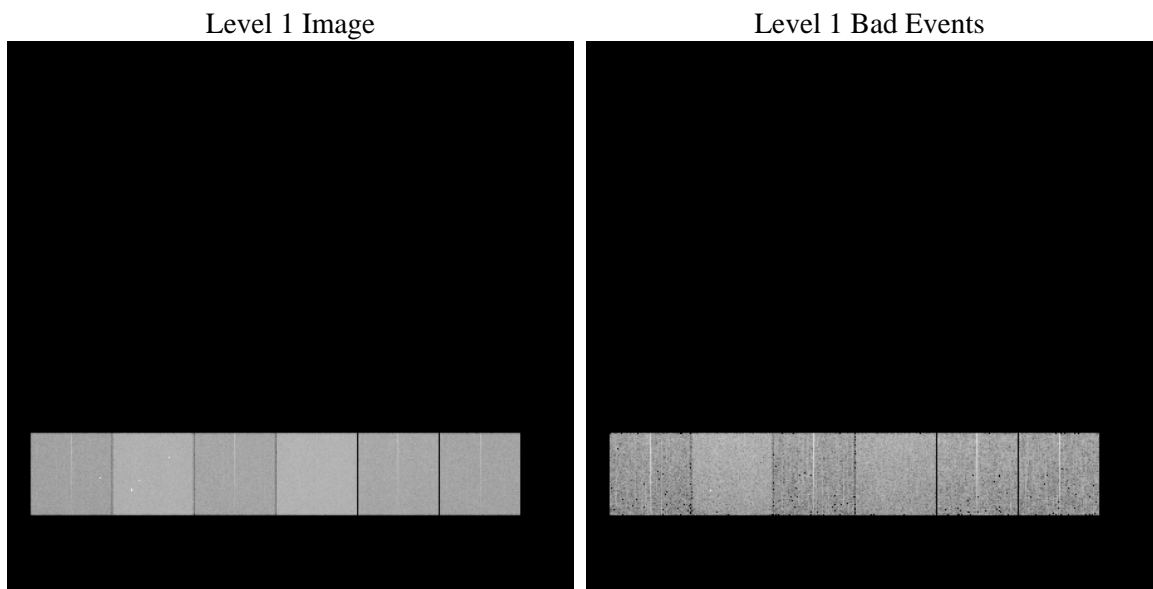
1 Front

seq_num	 	Sequence number
obs_id	60375	Observation id
title	ACIS-456789 diagnostics	Proposal title
observer	CHANDRA engineering request/realtime commanding	Principal investig
object	 	Source name
dtcycle	0	
cycle	P	events from which exps? Prim/Second/Both
ra_targ	0.0	Observer's specified target RA [deg]
dec_targ	0.0	Observer's specified target Dec [deg]
ra_nom	127.02884854281	Nominal RA [deg]
dec_nom	-10.003147356958	Nominal Dec [deg]
roll_nom	320.76490906102	Nominal Roll [deg]
revision	3	Processing version of data
ontime	7800.5572701991	Sum of GTIs [s]
livetime	7701.7819171121	Livetime [s]
ontime4	4420.7606854439	Sum of GTIs [s]
ontime5	7800.5162301958	Sum of GTIs [s]
ontime6	4874.4998561144	Sum of GTIs [s]
ontime7	7800.5572701991	Sum of GTIs [s]
ontime8	5020.3438987732	Sum of GTIs [s]
ontime9	4667.0764609873	Sum of GTIs [s]
l2events	1124735	Number of level 2 events

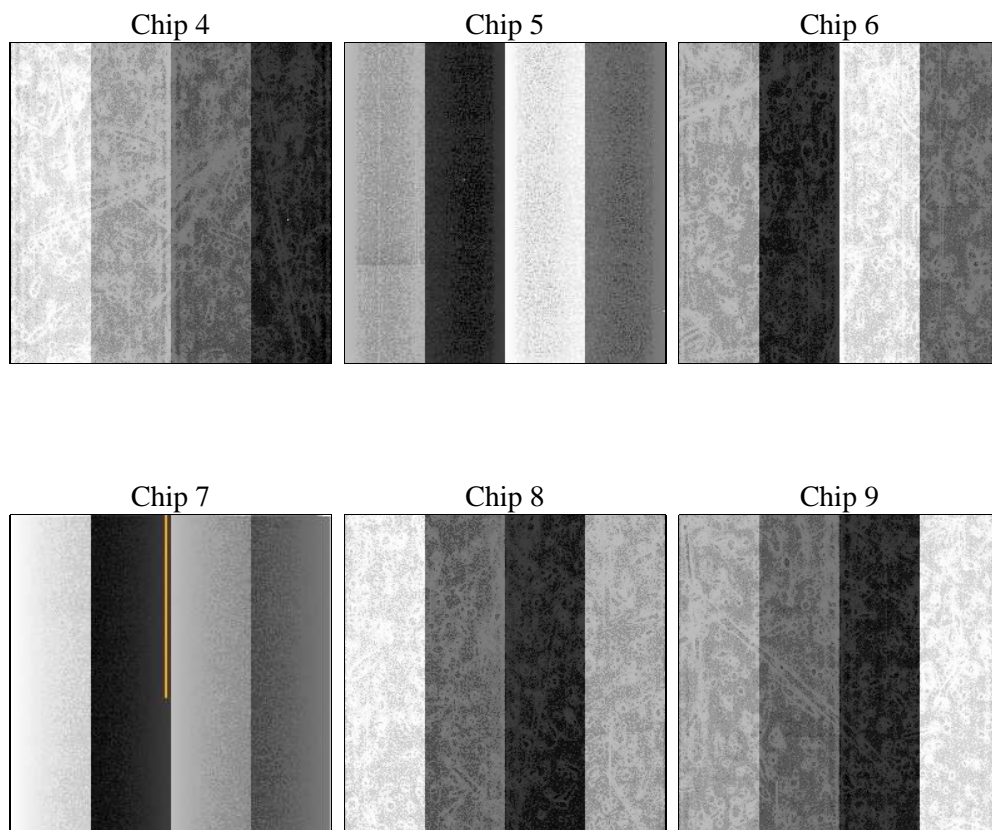
2 OBI

2.1 OBI

2.1.1 Images



2.1.2 Bias



2.1.3 Parameters

obi_num	0	Obi number	sched_exp_time	0.0	[s] Scheduled observation exposure time
ascdsver	8.4.5	Processing system revision	ontime	7800.5572701991	Sum of GTIs [s]
caldbver	4.5.2	 	ontime4	4420.7606854439	Sum of GTIs [s]
date	2012-11-12T00:18:47	Date and time of file creation	ontime5	7800.5162301958	Sum of GTIs [s]
revision	3	Processing version of data	ontime6	4874.4998561144	Sum of GTIs [s]
			ontime7	7800.5572701991	Sum of GTIs [s]
			ontime8	5020.3438987732	Sum of GTIs [s]
			ontime9	4667.0764609873	Sum of GTIs [s]
			l1events	1418730	Number of level 1 events

2.1.4 Events

	ccd 4	ccd 5	ccd 6	ccd 7	ccd 8	ccd 9		ccd 4	ccd 5	ccd 6	ccd 7	ccd 8	ccd 9
level 1 events	177735	300752	205140	324124	218940	192039	grade 0 events	84821	56517	93449	69817	98357	87165
rejected events	32185	50426	33722	42622	38364	33738		47%	18%	45%	21%	44%	45%
rejected %	18%	16%	16%	13%	17%	17%	grade 1 events	628	442	454	184	503	521
								0%	0%	0%	0%	0%	0%
							grade 2 events	22577	91437	29819	62455	31542	26952
								12%	30%	14%	19%	14%	14%
							grade 3 events	9679	14570	10648	27733	11668	10168
								5%	4%	5%	8%	5%	5%
							grade 4 events	9746	14434	10330	27704	11619	10058
								5%	4%	5%	8%	5%	5%
							grade 5 events	2001	8103	2276	7661	2740	2391
								1%	2%	1%	2%	1%	1%
							grade 6 events	18727	73368	27172	93793	27390	23958
								10%	24%	13%	28%	12%	12%
							grade 7 events	29556	41881	30992	34777	35121	30826
								16%	13%	15%	10%	16%	16%

2.2 Compared Parameters

Parameter	Planned	Actual
Instrument	ACIS	ACIS
Detector	ACIS-456789	ACIS-456789
Grating	NONE	NONE
Data mode	FAINT	FAINT
Observation mode	SECONDARY	SECONDARY
[deg] Pointing RA	0	127.0288485428081
[deg] Pointing Dec	0	-10.00314735695847
[deg] Pointing Roll	0.0	320.7649090610186
[mm] SIM focus pos	-0.684267	-0.6828225247311905
[mm] SIM defocus	0	0.8505141146731063
[mm] SIM translation stage pos	-190.132523	250.466033080201
[mm] SIM translation stage offset	0	-0.01005468664627074
[s] Observation start time (MET)	193044095.198408	193044094.1737
Observation start date	2004-02-13T07:21:35	2004-02-13T07:21:34
[s] Observation end time (MET)	193059642.399088	193059641.37438
Observation end date	2004-02-13T11:40:42	2004-02-13T11:40:41
Read mode	TIMED	TIMED

Parameter	Planned	Actual
Obspar format version number	7	7
Obspar file type	PREDICTED	ACTUAL
Obspar update status	NONE	UPDATED
On-chip summing requested	N	N
Subarray requested	NONE	NONE
Alternating exposures requested	N	N
[s] Primary exposure time	0.000000	3.2

2.3 Star Slots

2.4 FID Slots

A Summary

A.1 Status

V&V Scientist	Beth Sundheim
V&V Date (YYYY-MM-DD)	2012.12.19
V&V Edition	1
V&V Disposition and Status	OK
V&V Charge Time	7.8005572701991

A.2 Comments