

# V&V Reference Report

## L2 ASCDS Version : 7.6.7.2

Observation 60375 - L2 Version 001  
Chandra X-Ray Center

L2 Processing Date : Jun 2 2006

## Contents

<b>1</b>	<b>Front</b>	<b>2</b>
<b>2</b>	<b>OBI</b>	<b>3</b>
2.1	OBI . . . . .	3
2.1.1	Images . . . . .	3
2.1.2	Bias . . . . .	3
2.1.3	Parameters . . . . .	4
2.1.4	Events . . . . .	4
2.2	Compared Parameters . . . . .	5
2.3	Aspect . . . . .	6
2.4	Star Slots . . . . .	8
2.5	FID Slots . . . . .	8
<b>A</b>	<b>Summary</b>	<b>9</b>
A.1	Status . . . . .	9
A.2	Comments . . . . .	9

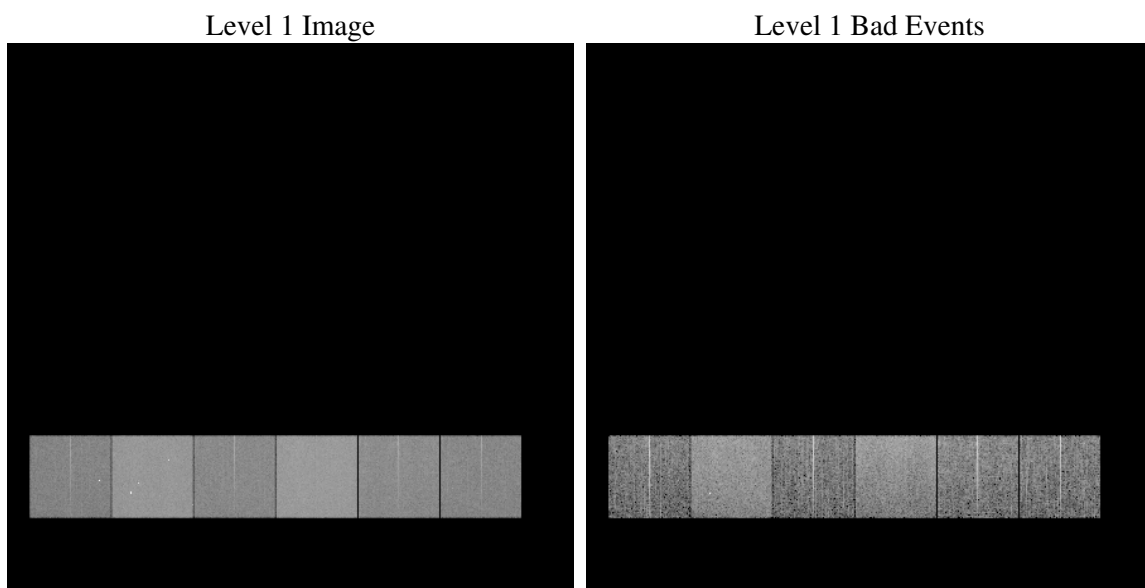
# 1 Front

seq_num	&#160
obs_id	60375
title	ACIS-456789 diagnostics
observer	CHANDRA engineering request/realtime commanding
object	&#160
dtcycle	0
cycle	P
ra_targ	0.0
dec_targ	0.0
ra_nom	127.02882671084
dec_nom	-10.003129757918
roll_nom	320.76490526109
revision	2
ontime	7800.551871866
livetime	7701.776587136
ontime4	4420.3265061975
ontime5	7800.5929118693
ontime6	4874.0246368647
ontime7	7800.551871866
ontime8	5019.9507595003
ontime9	4666.4781217277
l2events	1107828

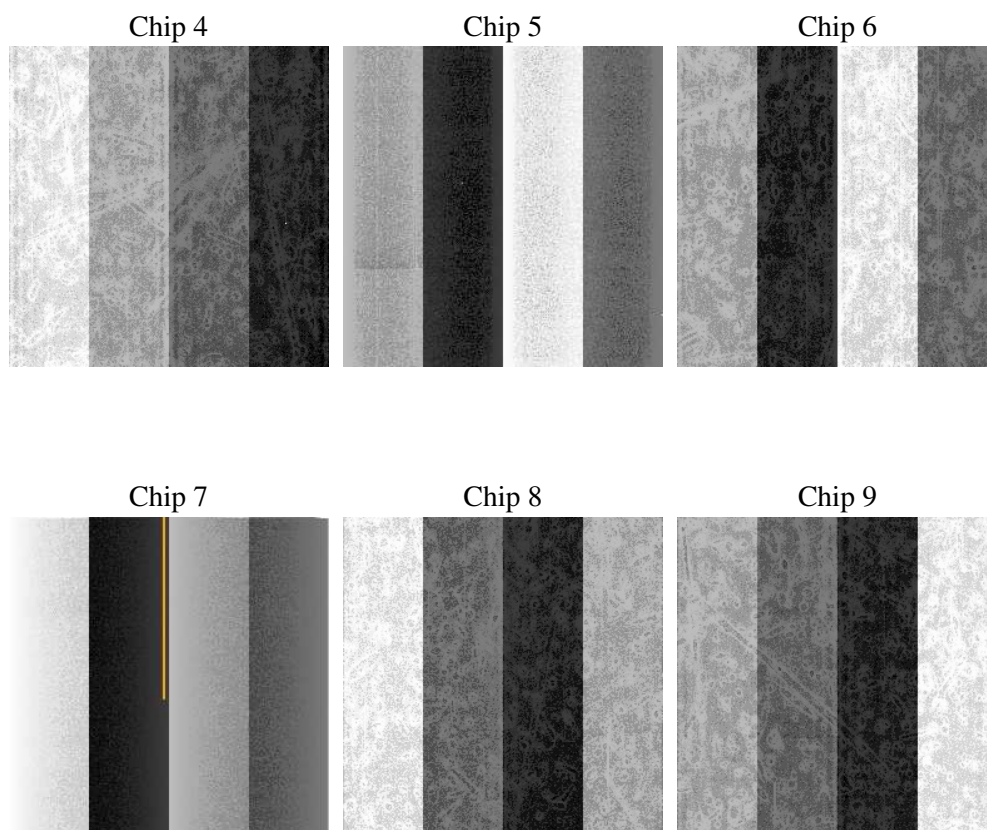
## 2 OBI

### 2.1 OBI

#### 2.1.1 Images



#### 2.1.2 Bias



### 2.1.3 Parameters

obi_num	0
ascdsver	7.6.7.2
caldbver	3.2.2
date	2006-06-02T21:27:01
revision	2

sched_exp_time	0.0
ontime	7801.1091711223
ontime4	4420.7606854439
ontime5	7801.1091711223
ontime6	4874.4998561144
ontime7	7801.1091711223
ontime8	5020.3438987732
ontime9	4667.0764609873
l1events	1418730

### 2.1.4 Events

	ccd 4	ccd 5	ccd 6	ccd 7	ccd 8	ccd 9
level 1 events	177735	300752	205140	324124	218940	192039
rejected events	32190	57144	33723	53179	38379	33736
rejected %	18%	19%	16%	16%	17%	17%

	ccd 4	ccd 5	ccd 6	ccd 7	ccd 8	ccd 9
grade 0 events	84784	29570	93397	48546	98311	87125
	47%	9%	45%	14%	44%	45%
grade 1 events	625	339	450	119	501	510
	0%	0%	0%	0%	0%	0%
grade 2 events	22613	114711	29872	82217	31588	26995
	12%	38%	14%	25%	14%	14%
grade 3 events	9666	7797	10629	19547	11660	10151
	5%	2%	5%	6%	5%	5%
grade 4 events	9737	7758	10312	19382	11608	10047
	5%	2%	5%	5%	5%	5%
grade 5 events	2001	5814	2273	6364	2742	2389
	1%	1%	1%	1%	1%	1%
grade 6 events	18745	83772	27207	101253	27394	23985
	10%	27%	13%	31%	12%	12%
grade 7 events	29564	50991	31000	46696	35136	30837
	16%	16%	15%	14%	16%	16%

## 2.2 Compared Parameters

Parameter	Planned	Actual	Parameter	Planned	Actual
Instrument	ACIS	ACIS	Obspar format version number	6	6
Detector	ACIS-456789	ACIS-456789	Obspar file type	PREDICTED	ACTUAL
Grating	NONE	NONE	Obspar update status	NONE	UPDATED
Data mode	FAINT	FAINT	On-chip summing requested	N	N
Observation mode	SECONDARY	SECONDARY	Subarray requested	NONE	NONE
Pointing RA	0	127.0288267108358	Alternating exposures requested	N	N
Pointing Dec	0	-10.00312975791847	Primary exposure time	0.000000	3.2
Pointing Roll	0.0	320.7649052610903			
SIM focus pos (mm)	-0.684267	-0.6828225247311905			
SIM defocus (mm)	0	0.8505141146731063			
SIM translation stage pos (mm)	-190.132523	250.466033080201			
SIM translation stage offset (mm)	0	-0.01005468664627074			
Observation start time	193044095.198408	193044094.1737			
Observation start date	2004-02-13T07:21:35	2004-02-13T07:21:34			
Observation end time	193059642.399088	193059641.37438			
Observation end date	2004-02-13T11:40:42	2004-02-13T11:40:41			
Read mode	TIMED	TIMED			

## 2.3 Aspect



## **2.4 Star Slots**

## **2.5 FID Slots**



## A Summary

### A.1 Status

V&V Scientist	Jen Lauer
V&V Date (YYYY-MM-DD)	2006.06.04
V&V Edition	1
V&V Disposition and Status	OK
V&V Charge Time	7.80055187

### A.2 Comments