

V&V Reference Report

L2 ASCDS Version : 7.6.7.2

Observation 60344 - L2 Version 001
Chandra X-Ray Center

L2 Processing Date : May 31 2006

Contents

1	Front	2
2	OBI	3
2.1	OBI	3
2.1.1	Images	3
2.1.2	Bias	3
2.1.3	Parameters	4
2.1.4	Events	4
2.2	Compared Parameters	5
2.3	Aspect	6
2.4	Star Slots	8
2.5	FID Slots	8
A	Summary	9
A.1	Status	9
A.2	Comments	9

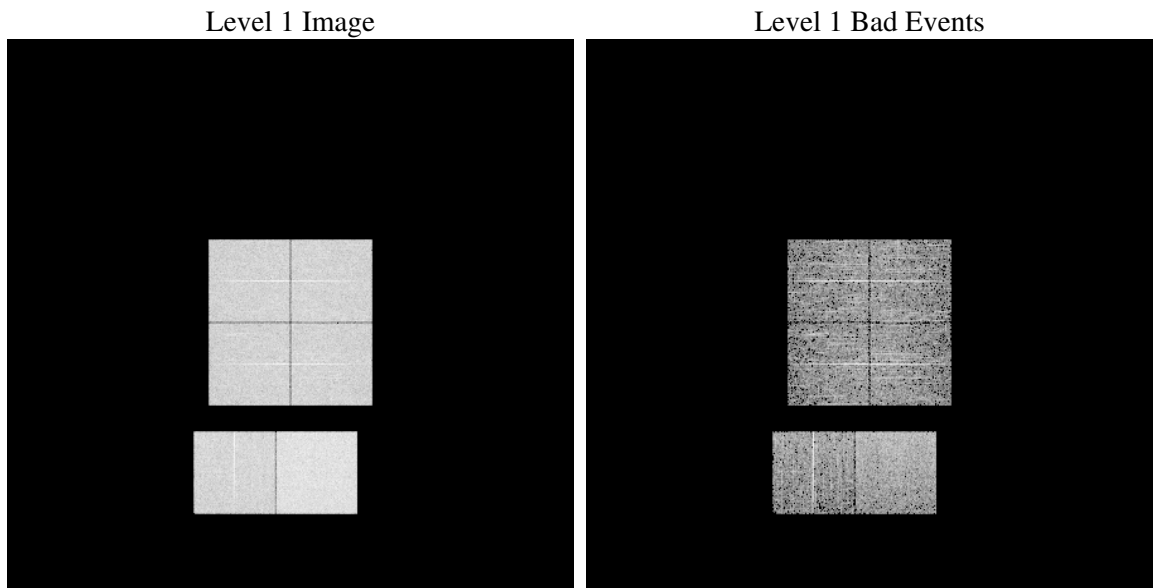
1 Front

seq_num	
obs_id	60344
title	ACIS-012367 diagnostics
observer	CHANDRA engineering request/realtime commanding
object	
dtcycle	0
cycle	P
ra_targ	0.0
dec_targ	0.0
ra_nom	138.01656458802
dec_nom	3.9766925104606
roll_nom	272.41181426143
revision	2
ontime	3887.9999855161
livetime	3838.7677886269
ontime0	2860.6109465063
ontime1	2899.5024511516
ontime2	2773.1043104529
ontime3	2838.3511682749
ontime6	2967.5632649064
ontime7	3887.9999855161
l2events	567742

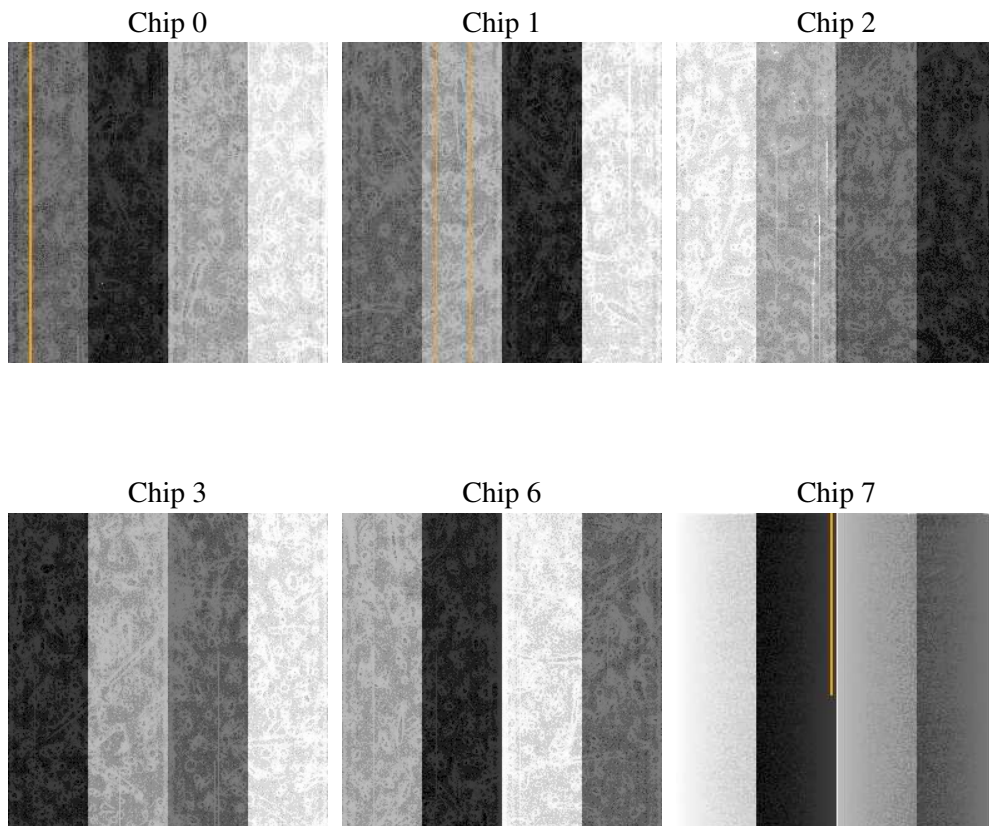
2 OBI

2.1 OBI

2.1.1 Images



2.1.2 Bias



2.1.3 Parameters

obi_num	0
ascdsver	7.6.7.2
caldbver	3.2.2
date	2006-05-31T21:31:21
revision	2

sched_exp_time	0.0
ontime	3895.6892006993
ontime0	2865.059181422
ontime1	2903.9506661594
ontime2	2774.3115053773
ontime3	2845.6134100258
ontime6	2975.2524800897
ontime7	3895.6892006993
l1events	721209

2.1.4 Events

	ccd 0	ccd 1	ccd 2	ccd 3	ccd 6	ccd 7
level 1 events	110562	112701	109418	111616	120128	156784
rejected events	19069	19616	18854	19641	20783	27696
rejected %	17%	17%	17%	17%	17%	17%

	ccd 0	ccd 1	ccd 2	ccd 3	ccd 6	ccd 7
grade 0 events	50411	51073	50736	51991	54318	22316
	45%	45%	46%	46%	45%	14%
grade 1 events	300	243	307	308	259	53
	0%	0%	0%	0%	0%	0%
grade 2 events	16020	16566	15334	15592	17110	39148
	14%	14%	14%	13%	14%	24%
grade 3 events	5924	5837	5757	6007	6179	9339
	5%	5%	5%	5%	5%	5%
grade 4 events	6035	5960	5911	5991	6199	9233
	5%	5%	5%	5%	5%	5%
grade 5 events	1266	1208	1163	1340	1425	3391
	1%	1%	1%	1%	1%	2%
grade 6 events	13221	13744	12826	12607	15745	49249
	11%	12%	11%	11%	13%	31%
grade 7 events	17385	18070	17384	17780	18893	24055
	15%	16%	15%	15%	15%	15%

2.2 Compared Parameters

Parameter	Planned	Actual	Parameter	Planned	Actual
Instrument	ACIS	ACIS	Obspar format version number	6	6
Detector	ACIS-012367	ACIS-012367	Obspar file type	PREDICTED	ACTUAL
Grating	NONE	NONE	Obspar update status	NONE	UPDATED
Data mode	FAINT	FAINT	On-chip summing requested	N	N
Observation mode	SECONDARY	SECONDARY	Subarray requested	NONE	NONE
Pointing RA	0	138.0165645880213	Alternating exposures requested	N	N
Pointing Dec	0	3.976692510460579	Primary exposure time	0.000000	3.2
Pointing Roll	0.0	272.4118142614344			
SIM focus pos (mm)	-0.782348	-0.6828225247311905			
SIM defocus (mm)	0	0.8505141146731063			
SIM translation stage pos (mm)	-233.592463	250.4635187648994			
SIM translation stage offset (mm)	0	-0.007540371344731511			
Observation start time	195140353.540202	195140352.5155			
Observation start date	2004-03-08T13:39:14	2004-03-08T13:39:12			
Observation end time	195157093.840936	195157092.81623			
Observation end date	2004-03-08T18:18:14	2004-03-08T18:18:12			
Read mode	TIMED	TIMED			

2.3 Aspect

2.4 Star Slots

2.5 FID Slots

A Summary

A.1 Status

V&V Scientist	Jen Lauer
V&V Date (YYYY-MM-DD)	2006.06.01
V&V Edition	1
V&V Disposition and Status	OK
V&V Charge Time	3.88799998

A.2 Comments