

V&V Reference Report

L2 ASCDS Version : 8.4.5

Observation 60328 - L2 Version 3
Chandra X-Ray Center

L2 Processing Date : Nov 13 2012

Contents

1	Front	2
2	OBI	3
2.1	OBI	3
2.1.1	Images	3
2.1.2	Bias	3
2.1.3	Parameters	4
2.1.4	Events	4
2.2	Compared Parameters	5
2.3	Star Slots	6
2.4	FID Slots	6
A	Summary	7
A.1	Status	7
A.2	Comments	7

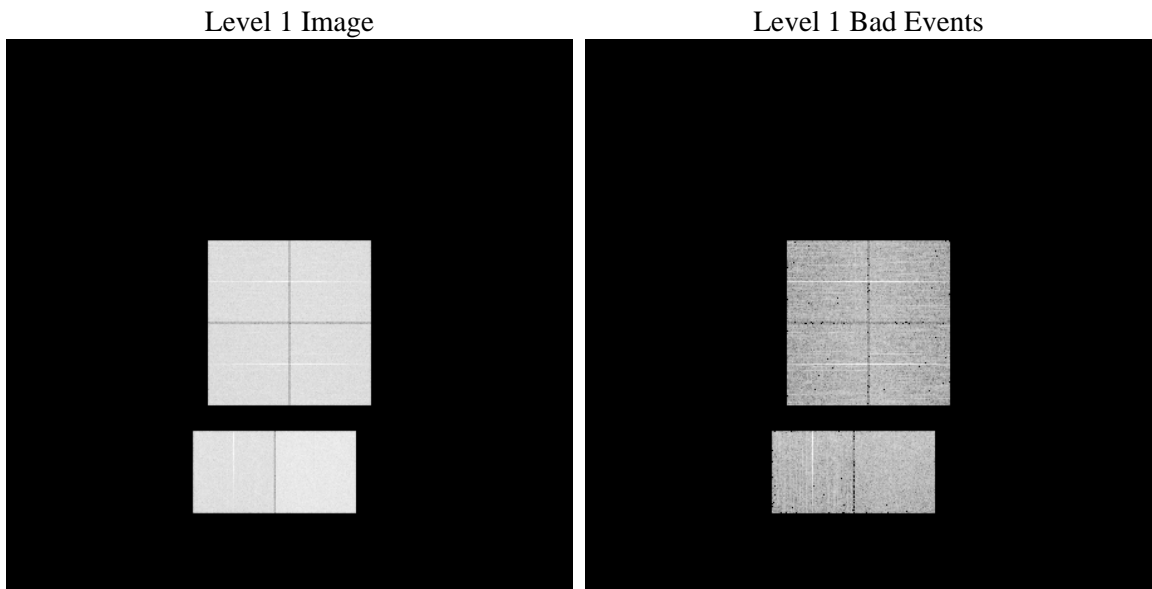
1 Front

seq_num	 	Sequence number
obs_id	60328	Observation id
title	ACIS-012367 diagnostics	Proposal title
observer	CHANDRA engineering request/realtime commanding	Principal investig
object	 	Source name
dtcycle	0	
cycle	P	events from which exps? Prim/Second/Both
ra_targ	0.0	Observer's specified target RA [deg]
dec_targ	0.0	Observer's specified target Dec [deg]
ra_nom	64.015236827382	Nominal RA [deg]
dec_nom	0.97572513820536	Nominal Dec [deg]
roll_nom	269.37710037102	Nominal Roll [deg]
revision	3	Processing version of data
ontime	8463.9999684691	Sum of GTIs [s]
livetime	8356.8237044595	Livetime [s]
ontime0	6127.2670876682	Sum of GTIs [s]
ontime1	6243.9424746335	Sum of GTIs [s]
ontime2	5806.4108843505	Sum of GTIs [s]
ontime3	5981.4230079055	Sum of GTIs [s]
ontime6	6428.6758357584	Sum of GTIs [s]
ontime7	8463.9999684691	Sum of GTIs [s]
l2events	1217898	Number of level 2 events

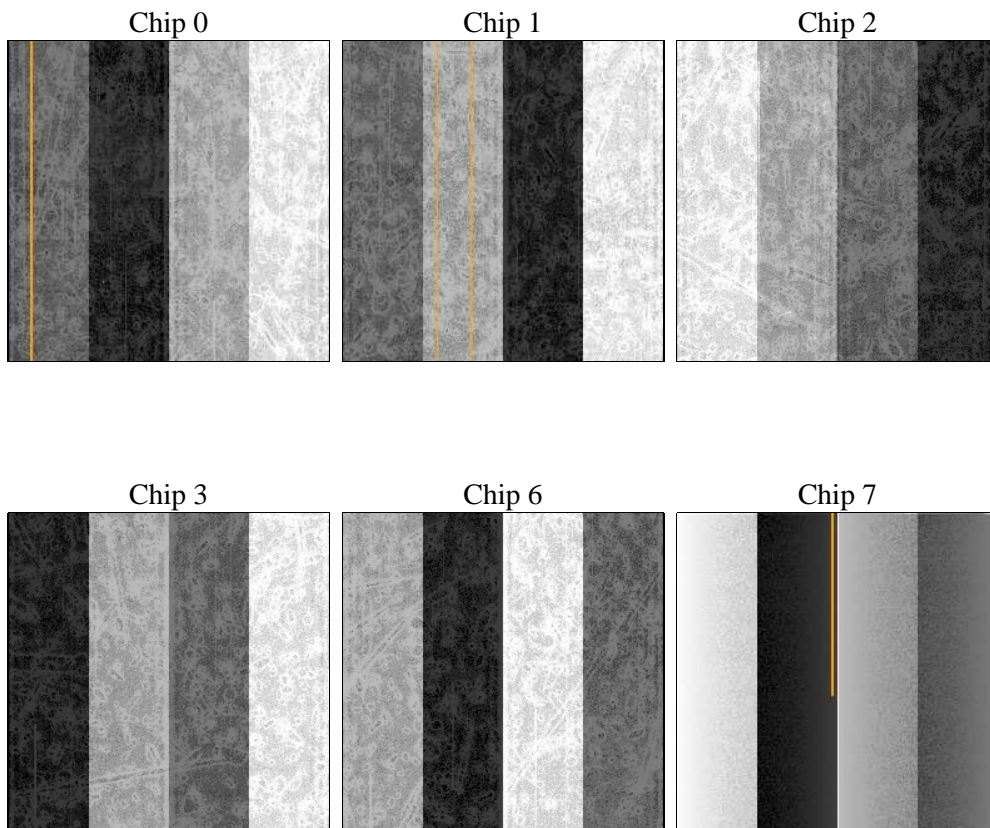
2 OBI

2.1 OBI

2.1.1 Images



2.1.2 Bias



2.1.3 Parameters

obi_num	0	Obi number	sched_exp_time	0.0	[s] Scheduled observation exposure time
ascdsver	8.4.5	Processing system revision	ontime	8463.9999684691	Sum of GTIs [s]
caldsver	4.5.2	 	ontime0	6127.2670876682	Sum of GTIs [s]
date	2012-11-13T19:55:42	Date and time of file creation	ontime1	6243.9424746335	Sum of GTIs [s]
revision	3	Processing version of data	ontime2	5806.4108843505	Sum of GTIs [s]
			ontime3	5981.4230079055	Sum of GTIs [s]
			ontime6	6428.6758357584	Sum of GTIs [s]
			ontime7	8463.9999684691	Sum of GTIs [s]
			l1events	1533886	Number of level 1 events

2.1.4 Events

	ccd 0	ccd 1	ccd 2	ccd 3	ccd 6	ccd 7		ccd 0	ccd 1	ccd 2	ccd 3	ccd 6	ccd 7
level 1 events	233696	239682	227441	235430	258892	338745	grade 0 events	106515	108854	104502	108047	116309	71999
rejected events	40225	41035	40621	42568	45128	47152		45%	45%	45%	45%	44%	21%
rejected %	17%	17%	17%	18%	17%	13%	grade 1 events	570	538	663	616	533	230
								0%	0%	0%	0%	0%	0%
							grade 2 events	33673	35255	31712	32855	36873	64085
								14%	14%	13%	13%	14%	18%
							grade 3 events	12637	12672	12253	12695	13299	29228
								5%	5%	5%	5%	5%	8%
							grade 4 events	12384	12616	12083	12493	13102	28876
								5%	5%	5%	5%	5%	8%
							grade 5 events	2656	2683	2505	2764	3019	8911
								1%	1%	1%	1%	1%	2%
							grade 6 events	28262	29250	26270	26772	34181	97405
								12%	12%	11%	11%	13%	28%
							grade 7 events	36999	37814	37453	39188	41576	38011
								15%	15%	16%	16%	16%	11%

2.2 Compared Parameters

Parameter	Planned	Actual	Parameter	Planned	Actual
Instrument	ACIS	ACIS	Obspar format version number	7	7
Detector	ACIS-012367	ACIS-012367	Obspar file type	PREDICTED	ACTUAL
Grating	NONE	NONE	Obspar update status	NONE	UPDATED
Data mode	FAINT	FAINT	On-chip summing requested	N	N
Observation mode	SECONDARY	SECONDARY	Subarray requested	NONE	NONE
[deg] Pointing RA	0	64.01523682738173	Alternating exposures requested	N	N
[deg] Pointing Dec	0	0.9757251382053637	[s] Primary exposure time	0.000000	3.2
[deg] Pointing Roll	0.0	269.3771003710219			
[mm] SIM focus pos	-0.782348	-0.6828225247311905			
[mm] SIM defocus	0	0.8505141146731063			
[mm] SIM translation stage pos	-233.592463	250.466033080201			
[mm] SIM translation stage offset	0	-0.01005468664627074			
[s] Observation start time (MET)	196277923.190405	196277922.16541			
Observation start date	2004-03-21T17:38:43	2004-03-21T17:38:42			
[s] Observation end time (MET)	196301469.491438	196301468.46645			
Observation end date	2004-03-22T00:11:09	2004-03-22T00:11:08			
Read mode	TIMED	TIMED			

2.3 Star Slots

2.4 FID Slots

A Summary

A.1 Status

V&V Scientist	Beth Sundheim
V&V Date (YYYY-MM-DD)	2012.12.20
V&V Edition	1
V&V Disposition and Status	OK
V&V Charge Time	8.4639999684691

A.2 Comments