

V&V Reference Report

L2 ASCDS Version : 7.6.7.2

Observation 60328 - L2 Version 001
Chandra X-Ray Center

L2 Processing Date : May 29 2006

Contents

1	Front	2
2	OBI	3
2.1	OBI	3
2.1.1	Images	3
2.1.2	Bias	3
2.1.3	Parameters	4
2.1.4	Events	4
2.2	Compared Parameters	5
2.3	Aspect	6
2.4	Star Slots	8
2.5	FID Slots	8
A	Summary	9
A.1	Status	9
A.2	Comments	9

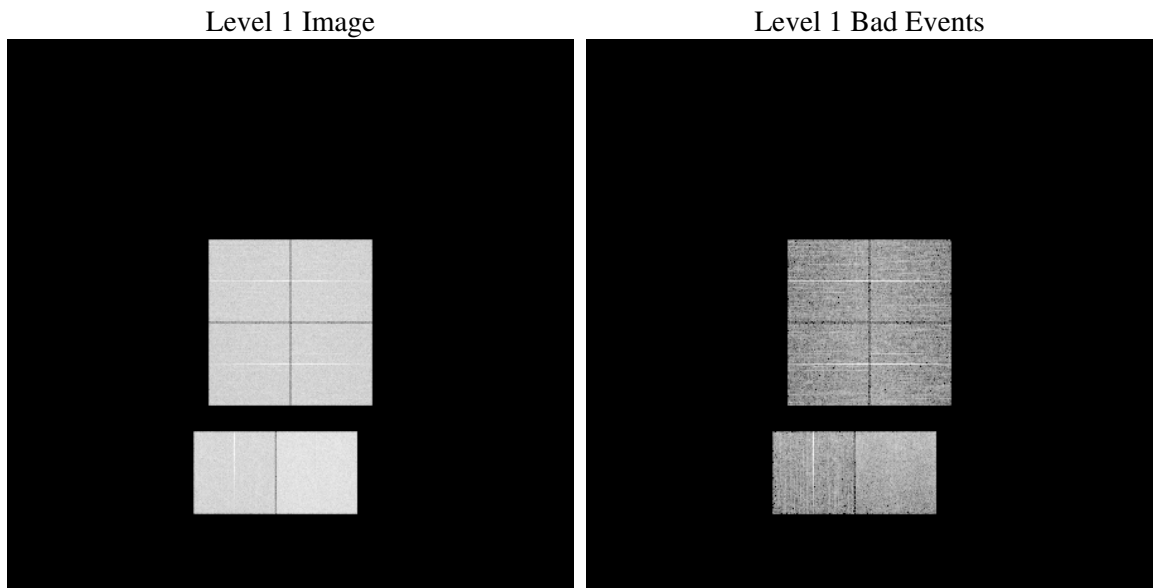
1 Front

seq_num	
obs_id	60328
title	ACIS-012367 diagnostics
observer	CHANDRA engineering request/realtime commanding
object	
dtcycle	0
cycle	P
ra_targ	0.0
dec_targ	0.0
ra_nom	64.015237171971
dec_nom	0.97575291858431
roll_nom	269.37710035645
revision	2
ontime	8463.1549741328
livetime	8355.9894099502
ontime0	6126.4631333351
ontime1	6243.1795603037
ontime2	5805.6890100241
ontime3	5980.5369735658
ontime6	6427.9950014055
ontime7	8463.1549741328
l2events	1205976

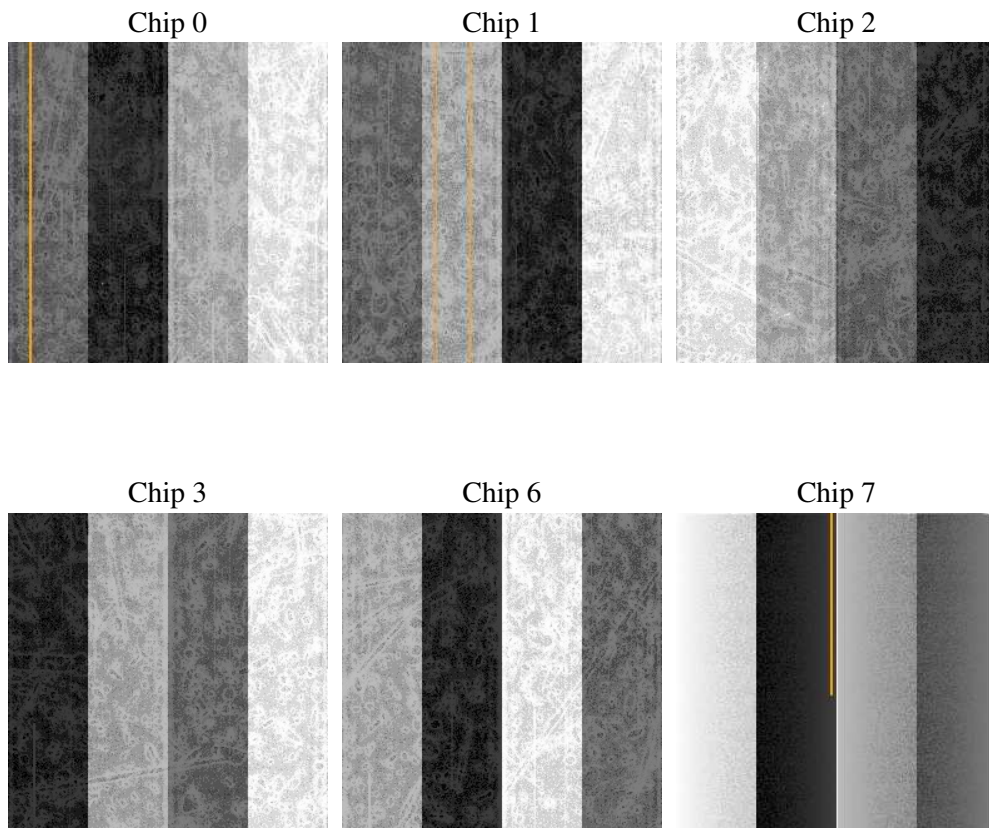
2 OBI

2.1 OBI

2.1.1 Images



2.1.2 Bias



2.1.3 Parameters

obi_num	0
ascdsver	7.6.7.2
caldbver	3.2.2
date	2006-05-29T22:05:14
revision	2

sched_exp_time	0.0
ontime	8465.4880117774
ontime0	6128.7551309764
ontime1	6245.4305179417
ontime2	5807.8989276588
ontime3	5982.9110512137
ontime6	6430.1638790667
ontime7	8465.4880117774
l1events	1533886

2.1.4 Events

	ccd 0	ccd 1	ccd 2	ccd 3	ccd 6	ccd 7
level 1 events	233696	239682	227441	235430	258892	338745
rejected events	40327	41139	40728	42679	45226	58809
rejected %	17%	17%	17%	18%	17%	17%

	ccd 0	ccd 1	ccd 2	ccd 3	ccd 6	ccd 7
grade 0 events	106520	108859	104508	108053	116319	49309
	45%	45%	45%	45%	44%	14%
grade 1 events	570	538	665	616	533	146
	0%	0%	0%	0%	0%	0%
grade 2 events	33668	35250	31705	32849	36864	85160
	14%	14%	13%	13%	14%	25%
grade 3 events	12639	12673	12253	12697	13301	20278
	5%	5%	5%	5%	5%	5%
grade 4 events	12387	12617	12085	12493	13105	19708
	5%	5%	5%	5%	5%	5%
grade 5 events	2656	2683	2506	2768	3017	7395
	1%	1%	1%	1%	1%	2%
grade 6 events	28257	29248	26267	26768	34182	105589
	12%	12%	11%	11%	13%	31%
grade 7 events	36999	37814	37452	39186	41571	51160
	15%	15%	16%	16%	16%	15%

2.2 Compared Parameters

Parameter	Planned	Actual	Parameter	Planned	Actual
Instrument	ACIS	ACIS	Obspar format version number	6	6
Detector	ACIS-012367	ACIS-012367	Obspar file type	PREDICTED	ACTUAL
Grating	NONE	NONE	Obspar update status	NONE	UPDATED
Data mode	FAINT	FAINT	On-chip summing requested	N	N
Observation mode	SECONDARY	SECONDARY	Subarray requested	NONE	NONE
Pointing RA	0	64.01523717197072	Alternating exposures requested	N	N
Pointing Dec	0	0.9757529185843129	Primary exposure time	0.000000	3.2
Pointing Roll	0.0	269.377100356449			
SIM focus pos (mm)	-0.782348	-0.6828225247311905			
SIM defocus (mm)	0	0.8505141146731063			
SIM translation stage pos (mm)	-233.592463	250.466033080201			
SIM translation stage offset (mm)	0	-0.01005468664627074			
Observation start time	196277923.190405	196277922.16541			
Observation start date	2004-03-21T17:38:43	2004-03-21T17:38:42			
Observation end time	196301469.491438	196301468.46645			
Observation end date	2004-03-22T00:11:09	2004-03-22T00:11:08			
Read mode	TIMED	TIMED			

2.3 Aspect

2.4 Star Slots

2.5 FID Slots

A Summary

A.1 Status

V&V Scientist	Beth Sundheim
V&V Date (YYYY-MM-DD)	2006.05.30
V&V Edition	1
V&V Disposition and Status	OK
V&V Charge Time	8.46315497

A.2 Comments