

# V&V Reference Report

## L2 ASCDS Version : 7.6.7.2

Observation 60303 - L2 Version 001  
Chandra X-Ray Center

L2 Processing Date : May 27 2006

## Contents

<b>1</b>	<b>Front</b>	<b>2</b>
<b>2</b>	<b>OBI</b>	<b>3</b>
2.1	OBI . . . . .	3
2.1.1	Images . . . . .	3
2.1.2	Bias . . . . .	3
2.1.3	Parameters . . . . .	4
2.1.4	Events . . . . .	4
2.2	Compared Parameters . . . . .	5
2.3	Aspect . . . . .	6
2.4	Star Slots . . . . .	8
2.5	FID Slots . . . . .	8
<b>A</b>	<b>Summary</b>	<b>9</b>
A.1	Status . . . . .	9
A.2	Comments . . . . .	9

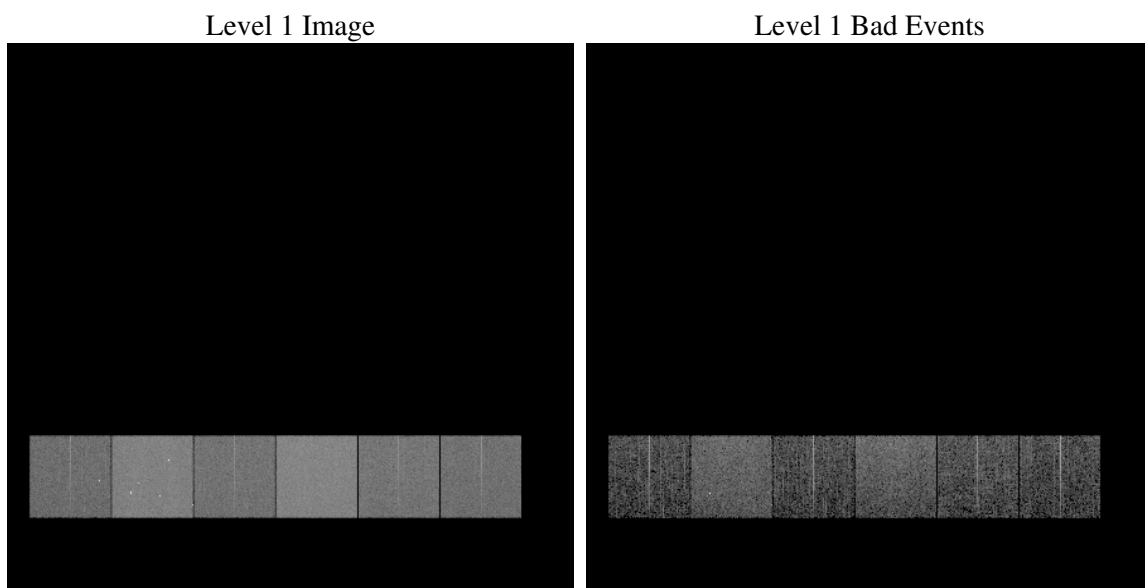
# 1 Front

seq_num	&#160
obs_id	60303
title	ACIS-456789 diagnostics
observer	CHANDRA engineering request/realtime commanding
object	&#160
dtcycle	0
cycle	P
ra_targ	0.0
dec_targ	0.0
ra_nom	186.97665366881
dec_nom	12.382749118448
roll_nom	184.26597086169
revision	2
ontime	4390.3999836445
livetime	4334.8060954701
ontime4	2433.3864193261
ontime5	4390.3999836445
ontime6	2688.8856155872
ontime7	4390.3999836445
ontime8	2757.5260635614
ontime9	2617.9588508606
l2events	624281

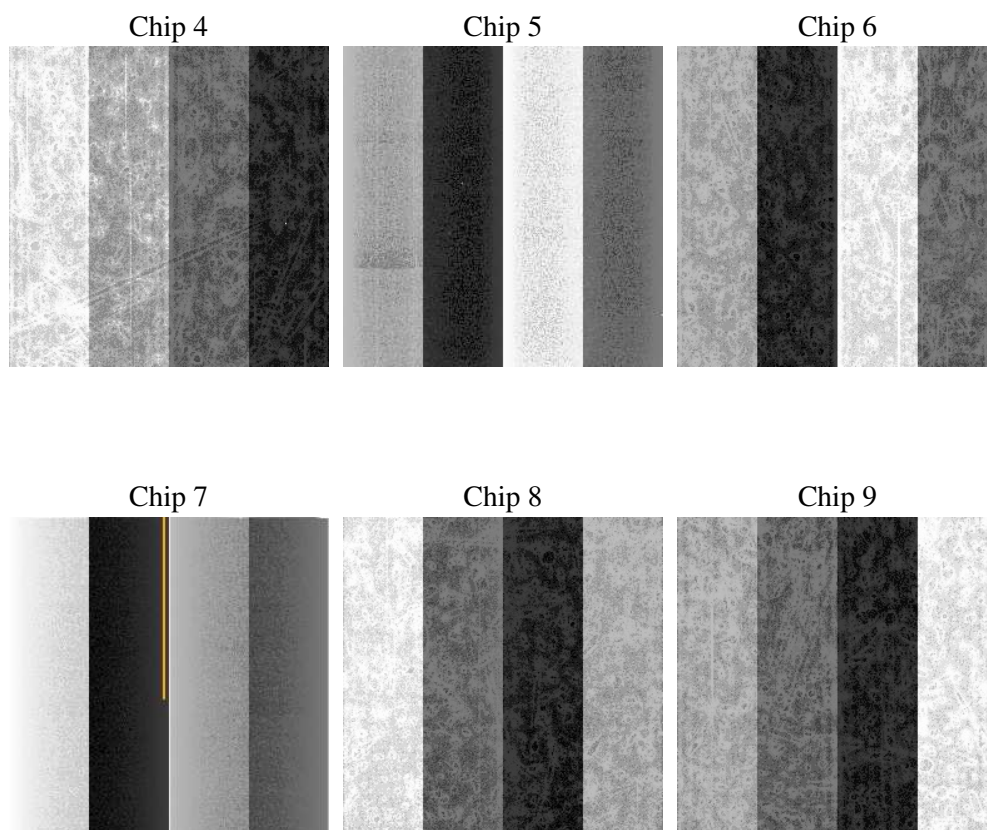
## 2 OBI

### 2.1 OBI

#### 2.1.1 Images



#### 2.1.2 Bias



### 2.1.3 Parameters

obi_num	0
ascdsver	7.6.7.2
caldbver	3.2.2
date	2006-05-27T14:32:38
revision	2

sched_exp_time	0.0
ontime	4391.563672781
ontime4	2434.010958463
ontime5	4391.563672781
ontime6	2690.0493047237
ontime7	4391.563672781
ontime8	2758.1095627248
ontime9	2618.7475500107
l1events	808192

### 2.1.4 Events

	ccd 4	ccd 5	ccd 6	ccd 7	ccd 8	ccd 9
level 1 events	100713	173437	115710	186142	122970	109220
rejected events	19412	34722	20110	31769	22464	19663
rejected %	19%	20%	17%	17%	18%	18%

	ccd 4	ccd 5	ccd 6	ccd 7	ccd 8	ccd 9
grade 0 events	46728	17788	51363	27487	54132	48665
	46%	10%	44%	14%	44%	44%
grade 1 events	364	97	273	78	325	311
	0%	0%	0%	0%	0%	0%
grade 2 events	12908	64299	16430	46577	17345	15401
	12%	37%	14%	25%	14%	14%
grade 3 events	5464	4410	5912	11101	6392	5732
	5%	2%	5%	5%	5%	5%
grade 4 events	5302	4469	5929	10987	6467	5636
	5%	2%	5%	5%	5%	5%
grade 5 events	1119	3436	1327	3913	1593	1387
	1%	1%	1%	2%	1%	1%
grade 6 events	10899	47749	15966	58221	16170	14123
	10%	27%	13%	31%	13%	12%
grade 7 events	17929	31189	18510	27778	20546	17965
	17%	17%	15%	14%	16%	16%

## 2.2 Compared Parameters

Parameter	Planned	Actual	Parameter	Planned	Actual
Instrument	ACIS	ACIS	Obspar format version number	6	6
Detector	ACIS-456789	ACIS-456789	Obspar file type	PREDICTED	ACTUAL
Grating	NONE	NONE	Obspar update status	NONE	UPDATED
Data mode	FAINT	FAINT	On-chip summing requested	N	N
Observation mode	SECONDARY	SECONDARY	Subarray requested	NONE	NONE
Pointing RA	0	186.9766536688103	Alternating exposures requested	N	N
Pointing Dec	0	12.38274911844755	Primary exposure time	0.000000	3.2
Pointing Roll	0.0	184.2659708616897			
SIM focus pos (mm)	-0.684267	-0.6828225247311905			
SIM defocus (mm)	0	0.8505141146731063			
SIM translation stage pos (mm)	-190.132523	250.466033080201			
SIM translation stage offset (mm)	0	-0.01005468664627074			
Observation start time	196928248.819006	196928247.79399			
Observation start date	2004-03-29T06:17:29	2004-03-29T06:17:27			
Observation end time	196934946.169301	196934945.14428			
Observation end date	2004-03-29T08:09:06	2004-03-29T08:09:05			
Read mode	TIMED	TIMED			

## 2.3 Aspect



## **2.4 Star Slots**

## **2.5 FID Slots**



## A Summary

### A.1 Status

V&V Scientist	Jen Lauer
V&V Date (YYYY-MM-DD)	2006.05.30
V&V Edition	1
V&V Disposition and Status	OK
V&V Charge Time	4.39039998

### A.2 Comments