

# V&V Reference Report

## L2 ASCDS Version : 8.4.5

Observation 60281 - L2 Version 3  
Chandra X-Ray Center

L2 Processing Date : Nov 30 2012

## Contents

<b>1</b>	<b>Front</b>	<b>2</b>
<b>2</b>	<b>OBI</b>	<b>3</b>
2.1	OBI . . . . .	3
2.1.1	Images . . . . .	3
2.1.2	Bias . . . . .	3
2.1.3	Parameters . . . . .	4
2.1.4	Events . . . . .	4
2.2	Compared Parameters . . . . .	5
2.3	Star Slots . . . . .	6
2.4	FID Slots . . . . .	6
<b>A</b>	<b>Summary</b>	<b>7</b>
A.1	Status . . . . .	7
A.2	Comments . . . . .	7

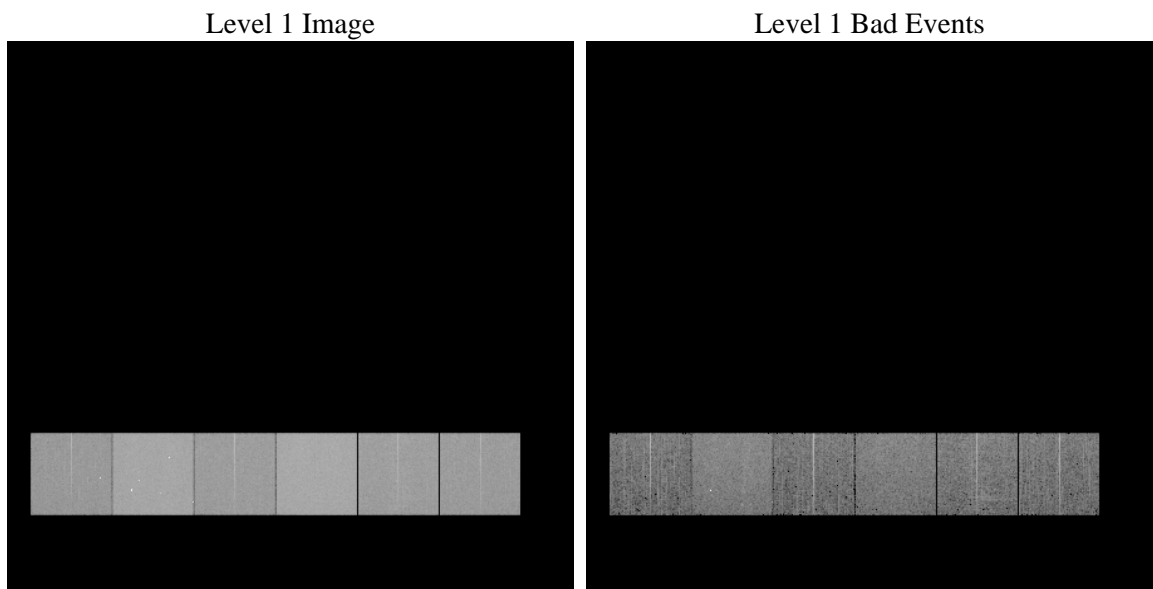
# 1 Front

seq_num	&#160	Sequence number
obs_id	60281	Observation id
title	ACIS-456789 diagnostics	Proposal title
observer	CHANDRA engineering request/realtime commanding	Principal investig
object	&#160	Source name
dtcycle	0	&#160
cycle	P	events from which exps? Prim/Second/Both
ra_targ	0.0	Observer's specified target RA [deg]
dec_targ	0.0	Observer's specified target Dec [deg]
ra_nom	220.97073946954	Nominal RA [deg]
dec_nom	15.004436160597	Nominal Dec [deg]
roll_nom	138.24798133919	Nominal Roll [deg]
revision	3	Processing version of data
ontime	8383.8378037214	Sum of GTIs [s]
livetime	8277.6766013096	Livetime [s]
ontime4	5098.1302517653	Sum of GTIs [s]
ontime5	8383.7967637181	Sum of GTIs [s]
ontime6	5612.72016868	Sum of GTIs [s]
ontime7	8383.8378037214	Sum of GTIs [s]
ontime8	5709.866242975	Sum of GTIs [s]
ontime9	5461.1213641763	Sum of GTIs [s]
l2events	1177011	Number of level 2 events

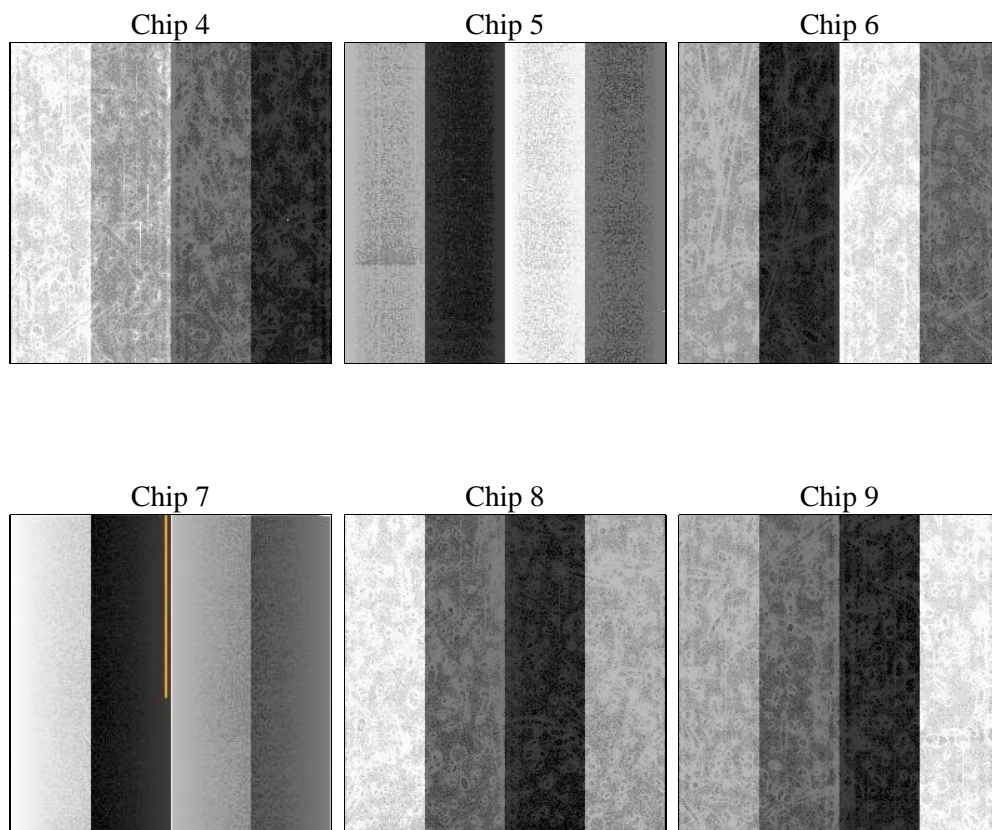
## 2 OBI

### 2.1 OBI

#### 2.1.1 Images



#### 2.1.2 Bias



### 2.1.3 Parameters

obi_num	0	Obi number	sched_exp_time	0.0	[s] Scheduled observation exposure time
ascdsver	8.4.5	Processing system revision	ontime	8383.8378037214	Sum of GTIs [s]
caldsver	4.5.2	&#160	ontime4	5098.1302517653	Sum of GTIs [s]
date	2012-11-29T21:56:33	Date and time of file creation	ontime5	8383.7967637181	Sum of GTIs [s]
revision	3	Processing version of data	ontime6	5612.72016868	Sum of GTIs [s]
			ontime7	8383.8378037214	Sum of GTIs [s]
			ontime8	5709.866242975	Sum of GTIs [s]
			ontime9	5461.1213641763	Sum of GTIs [s]
			l1events	1533036	Number of level 1 events

### 2.1.4 Events

	ccd 4	ccd 5	ccd 6	ccd 7	ccd 8	ccd 9		ccd 4	ccd 5	ccd 6	ccd 7	ccd 8	ccd 9
level 1 events	198223	318278	226017	336742	239293	214483	grade 0 events	91983	57918	101300	70287	105204	95748
rejected events	41516	61952	41977	51809	48027	42170		46%	18%	44%	20%	43%	44%
rejected %	20%	19%	18%	15%	20%	19%	grade 1 events	676	286	528	196	565	580
								0%	0%	0%	0%	0%	0%
							grade 2 events	25212	93530	31826	62948	33828	29923
								12%	29%	14%	18%	14%	13%
							grade 3 events	10602	15360	11643	28565	12566	11018
								5%	4%	5%	8%	5%	5%
							grade 4 events	10438	15199	11383	28773	12507	11127
								5%	4%	5%	8%	5%	5%
							grade 5 events	2338	9361	2647	8875	3241	2856
								1%	2%	1%	2%	1%	1%
							grade 6 events	20039	76755	29593	97068	29007	25933
								10%	24%	13%	28%	12%	12%
							grade 7 events	36935	49869	37097	40030	42375	37298
								18%	15%	16%	11%	17%	17%

## 2.2 Compared Parameters

Parameter	Planned	Actual	Parameter	Planned	Actual
Instrument	ACIS	ACIS	Obspar format version number	7	7
Detector	ACIS-456789	ACIS-456789	Obspar file type	PREDICTED	ACTUAL
Grating	NONE	NONE	Obspar update status	NONE	UPDATED
Data mode	FAINT	FAINT	On-chip summing requested	N	N
Observation mode	SECONDARY	SECONDARY	Subarray requested	NONE	NONE
[deg] Pointing RA	0	220.9707394695361	Alternating exposures requested	N	N
[deg] Pointing Dec	0	15.00443616059722	[s] Primary exposure time	0.000000	3.2
[deg] Pointing Roll	0.0	138.2479813391851			
[mm] SIM focus pos	-0.684267	-0.6828225247311905			
[mm] SIM defocus	0	0.8505141146731063			
[mm] SIM translation stage pos	-190.132523	250.466033080201			
[mm] SIM translation stage offset	0	-0.01005468664627074			
[s] Observation start time (MET)	198104104.270677	198104103.24568			
Observation start date	2004-04-11T20:55:04	2004-04-11T20:55:03			
[s] Observation end time (MET)	198127160.621691	198127159.59669			
Observation end date	2004-04-12T03:19:21	2004-04-12T03:19:19			
Read mode	TIMED	TIMED			

## 2.3 Star Slots

## 2.4 FID Slots

## A Summary

### A.1 Status

V&V Scientist	Beth Sundheim
V&V Date (YYYY-MM-DD)	2012.12.21
V&V Edition	1
V&V Disposition and Status	OK
V&V Charge Time	8.3838378037214

### A.2 Comments