

# V&V Reference Report

## L2 ASCDS Version : 7.6.7.2

Observation 60281 - L2 Version 001  
Chandra X-Ray Center

L2 Processing Date : May 25 2006

## Contents

<b>1</b>	<b>Front</b>	<b>2</b>
<b>2</b>	<b>OBI</b>	<b>3</b>
2.1	OBI . . . . .	3
2.1.1	Images . . . . .	3
2.1.2	Bias . . . . .	3
2.1.3	Parameters . . . . .	4
2.1.4	Events . . . . .	4
2.2	Compared Parameters . . . . .	5
2.3	Aspect . . . . .	6
2.4	Star Slots . . . . .	8
2.5	FID Slots . . . . .	8
<b>A</b>	<b>Summary</b>	<b>9</b>
A.1	Status . . . . .	9
A.2	Comments . . . . .	9

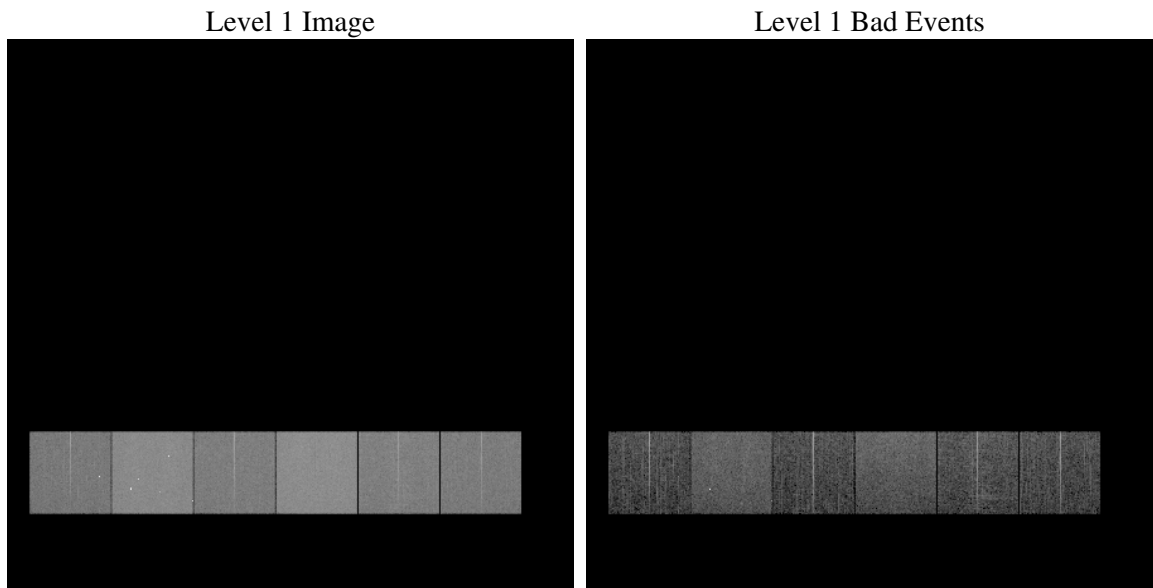
# 1 Front

seq_num	&#160
obs_id	60281
title	ACIS-456789 diagnostics
observer	CHANDRA engineering request/realtime commanding
object	&#160
dtcycle	0
cycle	P
ra_targ	0.0
dec_targ	0.0
ra_nom	220.97076090413
dec_nom	15.004417637153
roll_nom	138.24797578271
revision	2
ontime	8383.9999687672
livetime	8277.8367129239
ontime4	5097.6465714276
ontime5	8383.9999687672
ontime6	5612.0923789144
ontime7	8383.9999687672
ontime8	5710.1925680041
ontime9	5460.6376838386
l2events	1159236

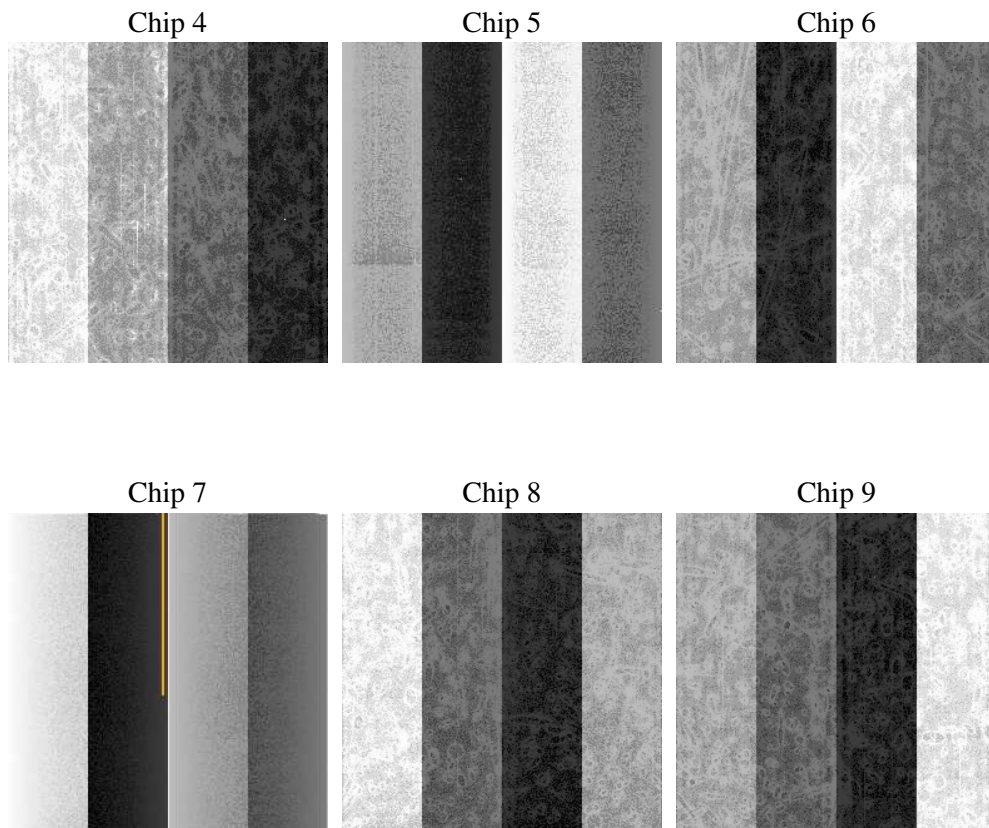
## 2 OBI

### 2.1 OBI

#### 2.1.1 Images



#### 2.1.2 Bias



### 2.1.3 Parameters

obi_num	0
ascdsver	7.6.7.2
caldsver	3.2.2
date	2006-05-25T17:43:44
revision	2

sched_exp_time	0.0
ontime	8462.2678623199
ontime4	5146.7456227243
ontime5	8462.2678623199
ontime6	5665.3044552803
ontime7	8462.2678623199
ontime8	5765.7735499442
ontime9	5509.7367550135
l1events	1533036

### 2.1.4 Events

	ccd 4	ccd 5	ccd 6	ccd 7	ccd 8	ccd 9
level 1 events	198223	318278	226017	336742	239293	214483
rejected events	41516	68964	41976	63026	48027	42170
rejected %	20%	21%	18%	18%	20%	19%

	ccd 4	ccd 5	ccd 6	ccd 7	ccd 8	ccd 9
grade 0 events	91983	29531	101300	47964	105204	95749
	46%	9%	44%	14%	43%	44%
grade 1 events	676	157	528	110	565	580
	0%	0%	0%	0%	0%	0%
grade 2 events	25212	118245	31826	83644	33828	29922
	12%	37%	14%	24%	14%	13%
grade 3 events	10602	8005	11643	19751	12566	11017
	5%	2%	5%	5%	5%	5%
grade 4 events	10438	7934	11382	19608	12506	11127
	5%	2%	5%	5%	5%	5%
grade 5 events	2338	6583	2646	7275	3241	2856
	1%	2%	1%	2%	1%	1%
grade 6 events	20039	87990	29595	105341	29008	25934
	10%	27%	13%	31%	12%	12%
grade 7 events	36935	59833	37097	53049	42375	37298
	18%	18%	16%	15%	17%	17%

## 2.2 Compared Parameters

Parameter	Planned	Actual	Parameter	Planned	Actual
Instrument	ACIS	ACIS	Obspar format version number	6	6
Detector	ACIS-456789	ACIS-456789	Obspar file type	PREDICTED	ACTUAL
Grating	NONE	NONE	Obspar update status	NONE	UPDATED
Data mode	FAINT	FAINT	On-chip summing requested	N	N
Observation mode	SECONDARY	SECONDARY	Subarray requested	NONE	NONE
Pointing RA	0	220.970760904132	Alternating exposures requested	N	N
Pointing Dec	0	15.00441763715287	Primary exposure time	0.000000	3.2
Pointing Roll	0.0	138.2479757827071			
SIM focus pos (mm)	-0.684267	-0.6828225247311905			
SIM defocus (mm)	0	0.8505141146731063			
SIM translation stage pos (mm)	-190.132523	250.466033080201			
SIM translation stage offset (mm)	0	-0.01005468664627074			
Observation start time	198104104.270677	198104103.24568			
Observation start date	2004-04-11T20:55:04	2004-04-11T20:55:03			
Observation end time	198127160.621691	198127159.59669			
Observation end date	2004-04-12T03:19:21	2004-04-12T03:19:19			
Read mode	TIMED	TIMED			

## 2.3 Aspect



## **2.4 Star Slots**

## **2.5 FID Slots**



## A Summary

### A.1 Status

V&V Scientist	Beth Sundheim
V&V Date (YYYY-MM-DD)	2006.05.25
V&V Edition	1
V&V Disposition and Status	OK
V&V Charge Time	8.38399996

### A.2 Comments