

# V&V Reference Report

## L2 ASCDS Version : 8.4.5

Observation 60277 - L2 Version 3  
Chandra X-Ray Center

L2 Processing Date : Nov 30 2012

## Contents

<b>1</b>	<b>Front</b>	<b>2</b>
<b>2</b>	<b>OBI</b>	<b>3</b>
2.1	OBI . . . . .	3
2.1.1	Images . . . . .	3
2.1.2	Bias . . . . .	3
2.1.3	Parameters . . . . .	4
2.1.4	Events . . . . .	4
2.2	Compared Parameters . . . . .	5
2.3	Star Slots . . . . .	6
2.4	FID Slots . . . . .	6
<b>A</b>	<b>Summary</b>	<b>7</b>
A.1	Status . . . . .	7
A.2	Comments . . . . .	7

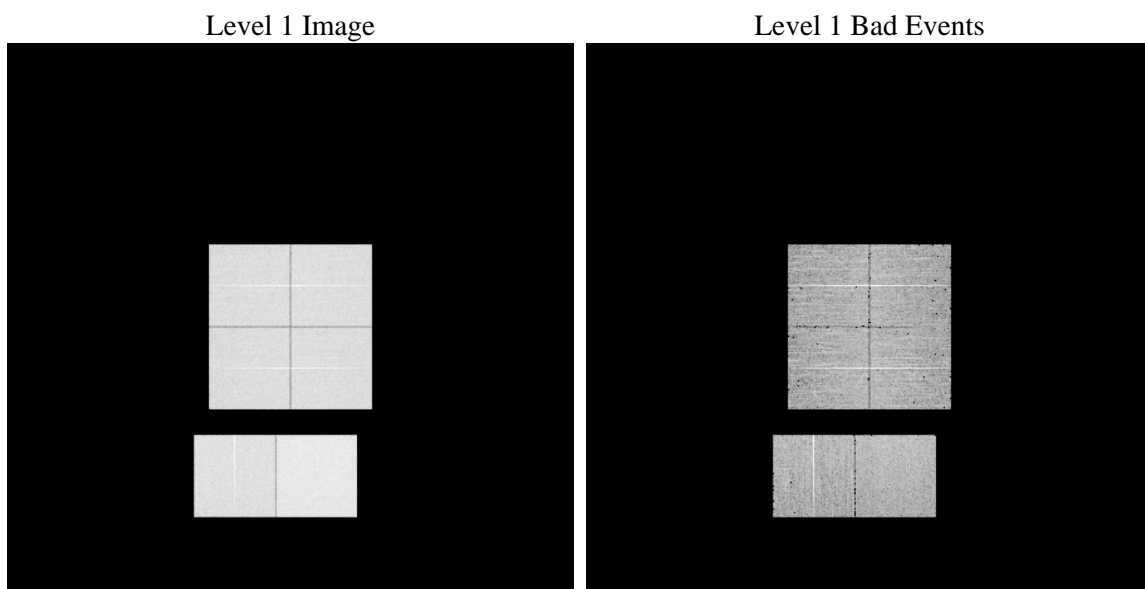
# 1 Front

seq_num	&#160	Sequence number
obs_id	60277	Observation id
title	ACIS-012367 diagnostics	Proposal title
observer	CHANDRA engineering request/realtime commanding	Principal investig
object	&#160	Source name
dtcycle	0	&#160
cycle	P	events from which exps? Prim/Second/Both
ra_targ	0.0	Observer's specified target RA [deg]
dec_targ	0.0	Observer's specified target Dec [deg]
ra_nom	330.9944948389	Nominal RA [deg]
dec_nom	53.028412605229	Nominal Dec [deg]
roll_nom	63.821102879548	Nominal Roll [deg]
revision	3	Processing version of data
ontime	8460.7992807329	Sum of GTIs [s]
livetime	8353.6635457585	Livetime [s]
ontime0	6104.579608351	Sum of GTIs [s]
ontime1	6308.7190251946	Sum of GTIs [s]
ontime2	5871.1486956775	Sum of GTIs [s]
ontime3	5945.8141424656	Sum of GTIs [s]
ontime6	6503.0951104164	Sum of GTIs [s]
ontime7	8460.7992807329	Sum of GTIs [s]
l2events	1203376	Number of level 2 events

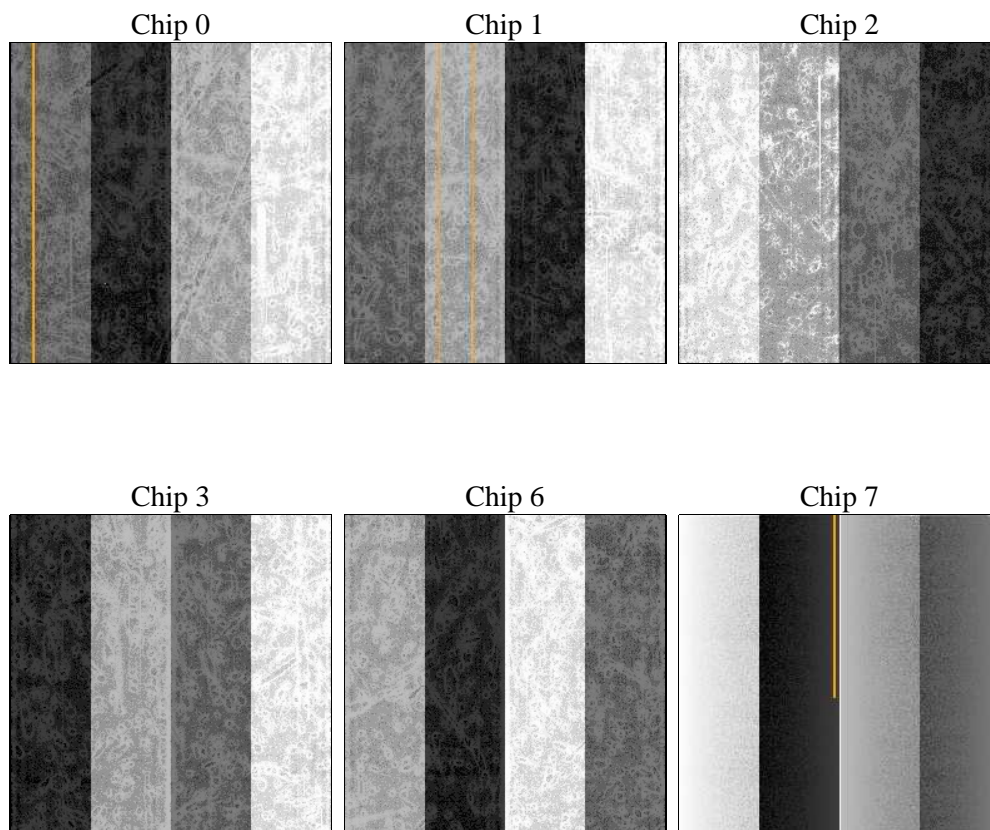
## 2 OBI

### 2.1 OBI

#### 2.1.1 Images



#### 2.1.2 Bias



### 2.1.3 Parameters

obi_num	0	Obi number	sched_exp_time	0.0	[s] Scheduled observation exposure time
ascdsver	8.4.5	Processing system revision	ontime	8460.7992807329	Sum of GTIs [s]
caldsver	4.5.2	&#160	ontime0	6104.579608351	Sum of GTIs [s]
date	2012-11-29T21:57:41	Date and time of file creation	ontime1	6308.7190251946	Sum of GTIs [s]
revision	3	Processing version of data	ontime2	5871.1486956775	Sum of GTIs [s]
			ontime3	5945.8141424656	Sum of GTIs [s]
			ontime6	6503.0951104164	Sum of GTIs [s]
			ontime7	8460.7992807329	Sum of GTIs [s]
			l1events	1533982	Number of level 1 events

### 2.1.4 Events

	ccd 0	ccd 1	ccd 2	ccd 3	ccd 6	ccd 7		ccd 0	ccd 1	ccd 2	ccd 3	ccd 6	ccd 7
level 1 events	232706	239782	228944	233857	260512	338181	grade 0 events	104277	108253	103357	105417	115486	69792
rejected events	42749	42080	43981	45504	47756	49933		44%	45%	45%	45%	44%	20%
rejected %	18%	17%	19%	19%	18%	14%	grade 1 events	612	564	650	669	608	186
								0%	0%	0%	0%	0%	0%
							grade 2 events	33409	35254	31336	32153	36586	63350
								14%	14%	13%	13%	14%	18%
							grade 3 events	12309	12469	11893	12367	13496	28588
								5%	5%	5%	5%	5%	8%
							grade 4 events	12413	12750	12192	12339	13094	28403
								5%	5%	5%	5%	5%	8%
							grade 5 events	2785	2926	2553	2928	3251	9071
								1%	1%	1%	1%	1%	2%
							grade 6 events	27549	28976	26185	26077	34094	98115
								11%	12%	11%	11%	13%	29%
							grade 7 events	39352	38590	40778	41907	43897	40676
								16%	16%	17%	17%	16%	12%

## 2.2 Compared Parameters

Parameter	Planned	Actual
Instrument	ACIS	ACIS
Detector	ACIS-012367	ACIS-012367
Grating	NONE	NONE
Data mode	FAINT	FAINT
Observation mode	SECONDARY	SECONDARY
[deg] Pointing RA	0	330.9944948389046
[deg] Pointing Dec	0	53.02841260522879
[deg] Pointing Roll	0.0	63.82110287954798
[mm] SIM focus pos	-0.782348	-1.038866356238299
[mm] SIM defocus	0	0.4944702831659975
[mm] SIM translation stage pos	-233.592463	250.4635187648994
[mm] SIM translation stage offset	0	-0.007540371344731511
[s] Observation start time (MET)	198336717.780919	198336716.75592
Observation start date	2004-04-14T13:31:58	2004-04-14T13:31:56
[s] Observation end time (MET)	198359136.581906	198359135.55691
Observation end date	2004-04-14T19:45:37	2004-04-14T19:45:35
Read mode	TIMED	TIMED

Parameter	Planned	Actual
Obspar format version number	7	7
Obspar file type	PREDICTED	ACTUAL
Obspar update status	NONE	UPDATED
On-chip summing requested	N	N
Subarray requested	NONE	NONE
Alternating exposures requested	N	N
[s] Primary exposure time	0.000000	3.2

## **2.3 Star Slots**

## **2.4 FID Slots**

## A Summary

### A.1 Status

V&V Scientist	Beth Sundheim
V&V Date (YYYY-MM-DD)	2012.12.21
V&V Edition	1
V&V Disposition and Status	OK
V&V Charge Time	8.4607992807329

### A.2 Comments