

# V&V Reference Report

## L2 ASCDS Version : 8.4.5

Observation 60267 - L2 Version 3  
Chandra X-Ray Center

L2 Processing Date : Nov 30 2012

## Contents

<b>1</b>	<b>Front</b>	<b>2</b>
<b>2</b>	<b>OBI</b>	<b>3</b>
2.1	OBI . . . . .	3
2.1.1	Images . . . . .	3
2.1.2	Bias . . . . .	3
2.1.3	Parameters . . . . .	4
2.1.4	Events . . . . .	4
2.2	Compared Parameters . . . . .	5
2.3	Star Slots . . . . .	6
2.4	FID Slots . . . . .	6
<b>A</b>	<b>Summary</b>	<b>7</b>
A.1	Status . . . . .	7
A.2	Comments . . . . .	7

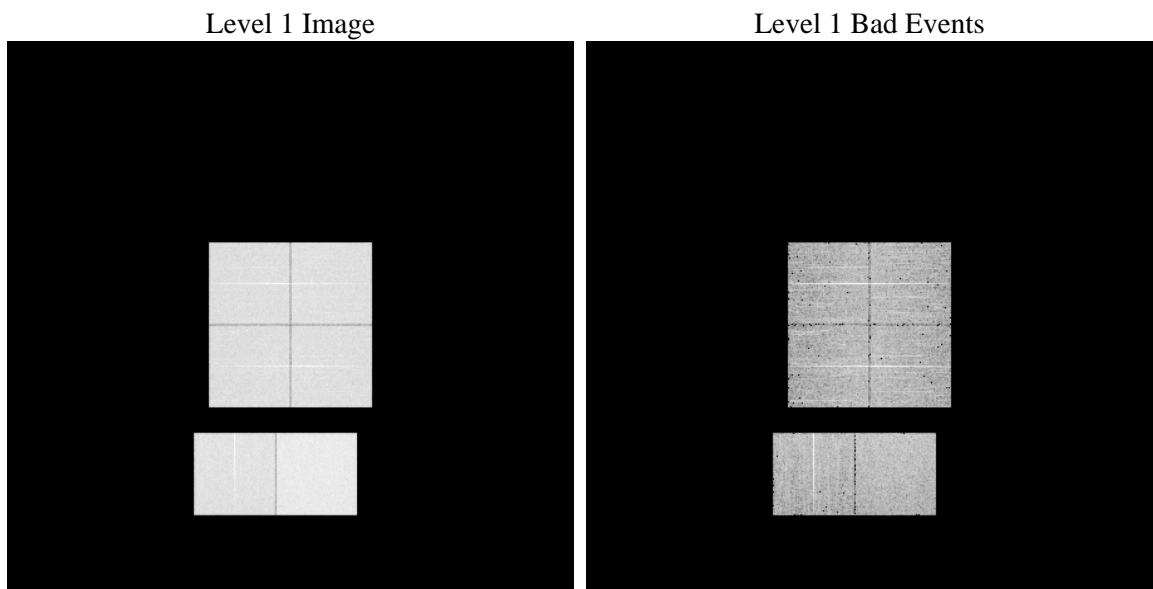
# 1 Front

seq_num	&#160	Sequence number
obs_id	60267	Observation id
title	ACIS-012367 diagnostics	Proposal title
observer	CHANDRA engineering request/realtime commanding	Principal investig
object	&#160	Source name
dtycle	0	&#160
cycle	P	events from which exps? Prim/Second/Both
ra_targ	0.0	Observer's specified target RA [deg]
dec_targ	0.0	Observer's specified target Dec [deg]
ra_nom	261.97640593118	Nominal RA [deg]
dec_nom	9.0166190561593	Nominal Dec [deg]
roll_nom	111.61095859607	Nominal Roll [deg]
revision	3	Processing version of data
ontime	7801.5999709368	Sum of GTIs [s]
livetime	7702.8114145452	Livetime [s]
ontime0	5615.4432027042	Sum of GTIs [s]
ontime1	5821.3685515225	Sum of GTIs [s]
ontime2	5458.380060643	Sum of GTIs [s]
ontime3	5620.4290817976	Sum of GTIs [s]
ontime6	5980.1762935817	Sum of GTIs [s]
ontime7	7801.5999709368	Sum of GTIs [s]
l2events	1114527	Number of level 2 events

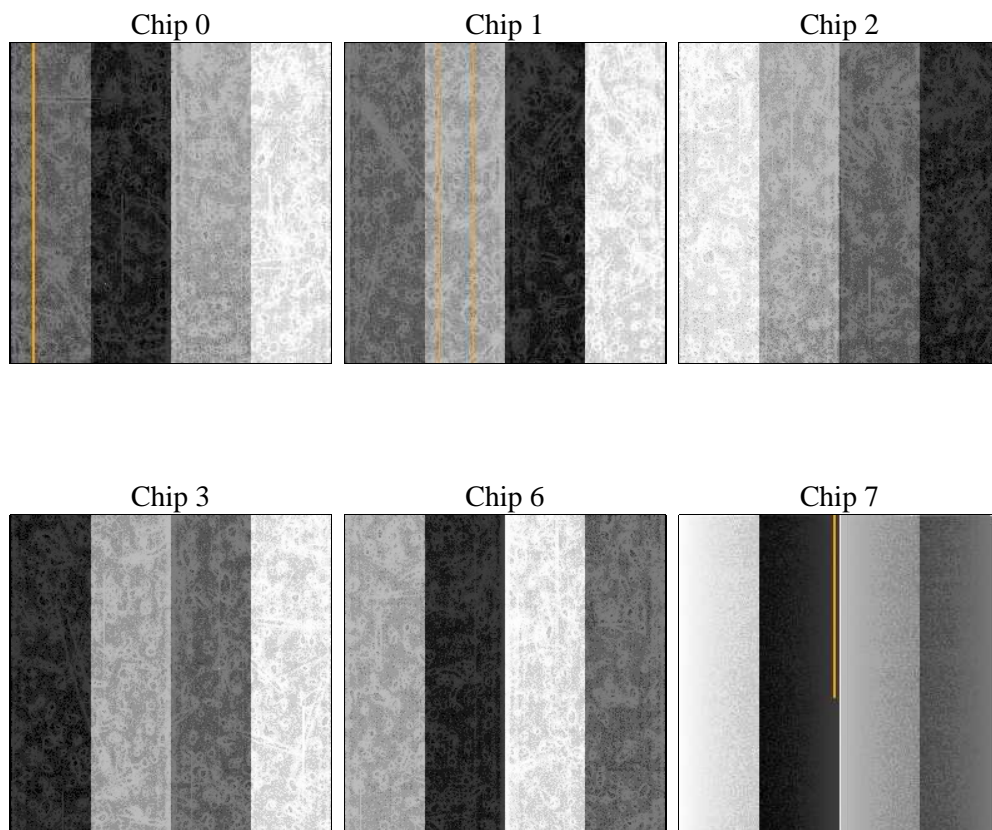
## 2 OBI

### 2.1 OBI

#### 2.1.1 Images



#### 2.1.2 Bias



### 2.1.3 Parameters

obi_num	0	Obi number	sched_exp_time	0.0	[s] Scheduled observation exposure time
ascdsver	8.4.5	Processing system revision	ontime	7801.5999709368	Sum of GTIs [s]
caldsver	4.5.2	&#160	ontime0	5615.4432027042	Sum of GTIs [s]
date	2012-11-30T16:02:15	Date and time of file creation	ontime1	5821.3685515225	Sum of GTIs [s]
revision	3	Processing version of data	ontime2	5458.380060643	Sum of GTIs [s]
			ontime3	5620.4290817976	Sum of GTIs [s]
			ontime6	5980.1762935817	Sum of GTIs [s]
			ontime7	7801.5999709368	Sum of GTIs [s]
			l1events	1416597	Number of level 1 events

### 2.1.4 Events

	ccd 0	ccd 1	ccd 2	ccd 3	ccd 6	ccd 7		ccd 0	ccd 1	ccd 2	ccd 3	ccd 6	ccd 7
level 1 events	214295	221750	211816	218137	238537	312062	grade 0 events	96633	99432	96497	99727	106055	65431
rejected events	39050	40204	39401	40484	42640	45937		45%	44%	45%	45%	44%	20%
rejected %	18%	18%	18%	18%	17%	14%	grade 1 events	608	515	650	633	559	198
								0%	0%	0%	0%	0%	0%
							grade 2 events	30511	32144	29003	29887	34003	58665
								14%	14%	13%	13%	14%	18%
							grade 3 events	11384	11445	11218	11749	12342	26738
								5%	5%	5%	5%	5%	8%
							grade 4 events	11481	11585	11262	11675	12188	26461
								5%	5%	5%	5%	5%	8%
							grade 5 events	2522	2694	2426	2781	2884	8500
								1%	1%	1%	1%	1%	2%
							grade 6 events	25236	26940	24435	24615	31309	88830
								11%	12%	11%	11%	13%	28%
							grade 7 events	35920	36995	36325	37070	39197	37239
								16%	16%	17%	16%	16%	11%

## 2.2 Compared Parameters

Parameter	Planned	Actual	Parameter	Planned	Actual
Instrument	ACIS	ACIS	Obspar format version number	7	7
Detector	ACIS-012367	ACIS-012367	Obspar file type	PREDICTED	ACTUAL
Grating	NONE	NONE	Obspar update status	NONE	UPDATED
Data mode	FAINT	FAINT	On-chip summing requested	N	N
Observation mode	SECONDARY	SECONDARY	Subarray requested	NONE	NONE
[deg] Pointing RA	0	261.9764059311753	Alternating exposures requested	N	N
[deg] Pointing Dec	0	9.016619056159293	[s] Primary exposure time	0.000000	3.2
[deg] Pointing Roll	0.0	111.6109585960739			
[mm] SIM focus pos	-0.782348	-0.6828225247311905			
[mm] SIM defocus	0	0.8505141146731063			
[mm] SIM translation stage pos	-233.592463	250.466033080201			
[mm] SIM translation stage offset	0	-0.01005468664627074			
[s] Observation start time (MET)	198984888.859489	198984887.83447			
Observation start date	2004-04-22T01:34:49	2004-04-22T01:34:47			
[s] Observation end time (MET)	198998738.6601	198998737.63508			
Observation end date	2004-04-22T05:25:39	2004-04-22T05:25:37			
Read mode	TIMED	TIMED			

## 2.3 Star Slots

## 2.4 FID Slots

## A Summary

### A.1 Status

V&V Scientist	Beth Sundheim
V&V Date (YYYY-MM-DD)	2012.12.21
V&V Edition	1
V&V Disposition and Status	OK
V&V Charge Time	7.8015999709368

### A.2 Comments