

# V&V Reference Report

## L2 ASCDS Version : 8.4.5

Observation 60254 - L2 Version 3  
Chandra X-Ray Center

L2 Processing Date : Nov 30 2012

## Contents

<b>1</b>	<b>Front</b>	<b>2</b>
<b>2</b>	<b>OBI</b>	<b>3</b>
2.1	OBI . . . . .	3
2.1.1	Images . . . . .	3
2.1.2	Bias . . . . .	3
2.1.3	Parameters . . . . .	4
2.1.4	Events . . . . .	4
2.2	Compared Parameters . . . . .	5
2.3	Star Slots . . . . .	6
2.4	FID Slots . . . . .	6
<b>A</b>	<b>Summary</b>	<b>7</b>
A.1	Status . . . . .	7
A.2	Comments . . . . .	7

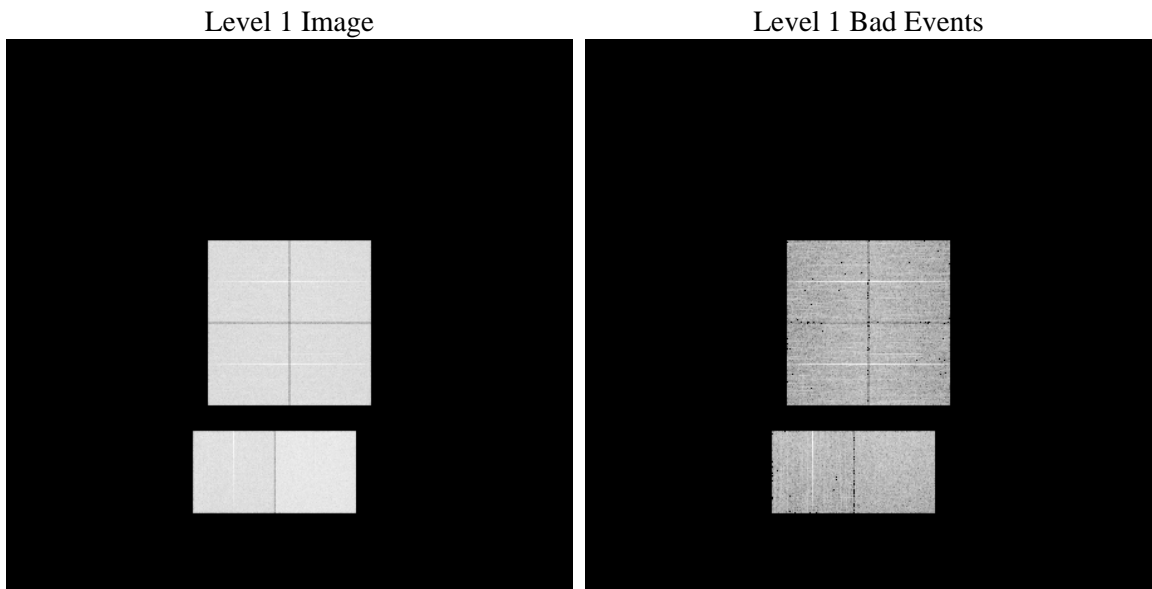
# 1 Front

seq_num	&#160	Sequence number
obs_id	60254	Observation id
title	ACIS-012367 diagnostics	Proposal title
observer	CHANDRA engineering request/realtime commanding	Principal investig
object	&#160	Source name
dtcycle	0	&#160
cycle	P	events from which exps? Prim/Second/Both
ra_targ	0.0	Observer's specified target RA [deg]
dec_targ	0.0	Observer's specified target Dec [deg]
ra_nom	219.02179674647	Nominal RA [deg]
dec_nom	-19.980023249945	Nominal Dec [deg]
roll_nom	11.436008395153	Nominal Roll [deg]
revision	3	Processing version of data
ontime	8460.5187180638	Sum of GTIs [s]
livetime	8353.3865357429	Livetime [s]
ontime0	6206.5442791283	Sum of GTIs [s]
ontime1	6407.484744966	Sum of GTIs [s]
ontime2	6028.2907936871	Sum of GTIs [s]
ontime3	6093.1102497578	Sum of GTIs [s]
ontime6	6533.882387042	Sum of GTIs [s]
ontime7	8460.5187180638	Sum of GTIs [s]
l2events	1207952	Number of level 2 events

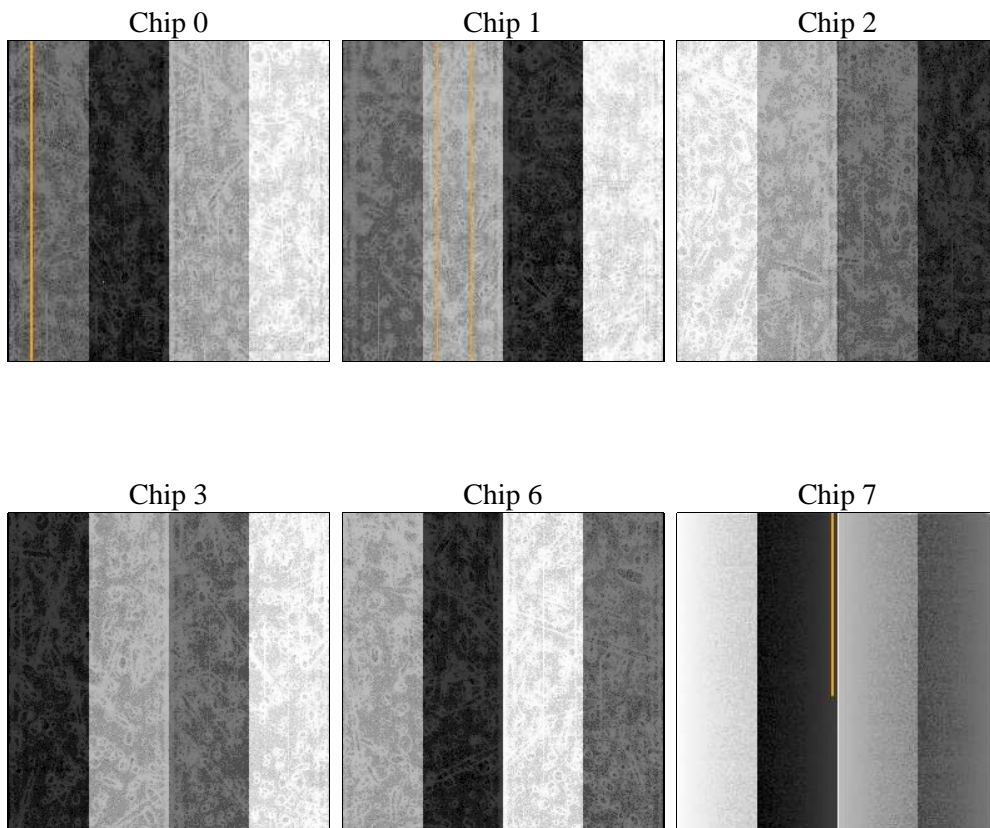
## 2 OBI

### 2.1 OBI

#### 2.1.1 Images



#### 2.1.2 Bias



### 2.1.3 Parameters

obi_num	0	Obi number	sched_exp_time	0.0	[s] Scheduled observation exposure time
ascdsver	8.4.5	Processing system revision	ontime	8460.5187180638	Sum of GTIs [s]
caldsver	4.5.2	&#160	ontime0	6206.5442791283	Sum of GTIs [s]
date	2012-11-30T19:03:37	Date and time of file creation	ontime1	6407.484744966	Sum of GTIs [s]
revision	3	Processing version of data	ontime2	6028.2907936871	Sum of GTIs [s]
			ontime3	6093.1102497578	Sum of GTIs [s]
			ontime6	6533.882387042	Sum of GTIs [s]
			ontime7	8460.5187180638	Sum of GTIs [s]
			l1events	1533184	Number of level 1 events

### 2.1.4 Events

	ccd 0	ccd 1	ccd 2	ccd 3	ccd 6	ccd 7		ccd 0	ccd 1	ccd 2	ccd 3	ccd 6	ccd 7
level 1 events	232874	240856	230978	233790	260004	334682	grade 0 events	105367	108754	105386	106800	115329	69089
rejected events	41359	42144	42405	43216	46958	50271		45%	45%	45%	45%	44%	20%
rejected %	17%	17%	18%	18%	18%	15%	grade 1 events	648	570	622	723	569	223
								0%	0%	0%	0%	0%	0%
							grade 2 events	33446	35488	32199	32329	36488	62560
								14%	14%	13%	13%	14%	18%
							grade 3 events	12355	12678	12323	12473	13426	28417
								5%	5%	5%	5%	5%	8%
							grade 4 events	12521	12615	12382	12576	13391	28462
								5%	5%	5%	5%	5%	8%
							grade 5 events	2799	2897	2548	2868	3165	8946
								1%	1%	1%	1%	1%	2%
							grade 6 events	27826	29177	26283	26396	34412	95998
								11%	12%	11%	11%	13%	28%
							grade 7 events	37912	38677	39235	39625	43224	40987
								16%	16%	16%	16%	16%	12%

## 2.2 Compared Parameters

Parameter	Planned	Actual	Parameter	Planned	Actual
Instrument	ACIS	ACIS	Obspar format version number	7	7
Detector	ACIS-012367	ACIS-012367	Obspar file type	PREDICTED	ACTUAL
Grating	NONE	NONE	Obspar update status	NONE	UPDATED
Data mode	FAINT	FAINT	On-chip summing requested	N	N
Observation mode	SECONDARY	SECONDARY	Subarray requested	NONE	NONE
[deg] Pointing RA	0	219.0217967464656	Alternating exposures requested	N	N
[deg] Pointing Dec	0	-19.98002324994503	[s] Primary exposure time	0.000000	3.2
[deg] Pointing Roll	0.0	11.43600839515258			
[mm] SIM focus pos	-0.782348	-0.6828225247311905			
[mm] SIM defocus	0	0.8505141146731063			
[mm] SIM translation stage pos	-233.592463	250.466033080201			
[mm] SIM translation stage offset	0	-0.01005468664627074			
[s] Observation start time (MET)	199708647.541383	199708646.51638			
Observation start date	2004-04-30T10:37:28	2004-04-30T10:37:26			
[s] Observation end time (MET)	199730734.242357	199730733.21735			
Observation end date	2004-04-30T16:45:34	2004-04-30T16:45:33			
Read mode	TIMED	TIMED			

## 2.3 Star Slots

## 2.4 FID Slots

## A Summary

### A.1 Status

V&V Scientist	Jen Lauer
V&V Date (YYYY-MM-DD)	2012.12.14
V&V Edition	1
V&V Disposition and Status	OK
V&V Charge Time	8.4605187180638

### A.2 Comments