

V&V Reference Report

L2 ASCDS Version : 7.6.7.2

Observation 60250 - L2 Version 001
Chandra X-Ray Center

L2 Processing Date : May 20 2006

Contents

1	Front	2
2	OBI	3
2.1	OBI	3
2.1.1	Images	3
2.1.2	Bias	3
2.1.3	Parameters	4
2.1.4	Events	4
2.2	Compared Parameters	5
2.3	Aspect	6
2.4	Star Slots	8
2.5	FID Slots	8
A	Summary	9
A.1	Status	9
A.2	Comments	9

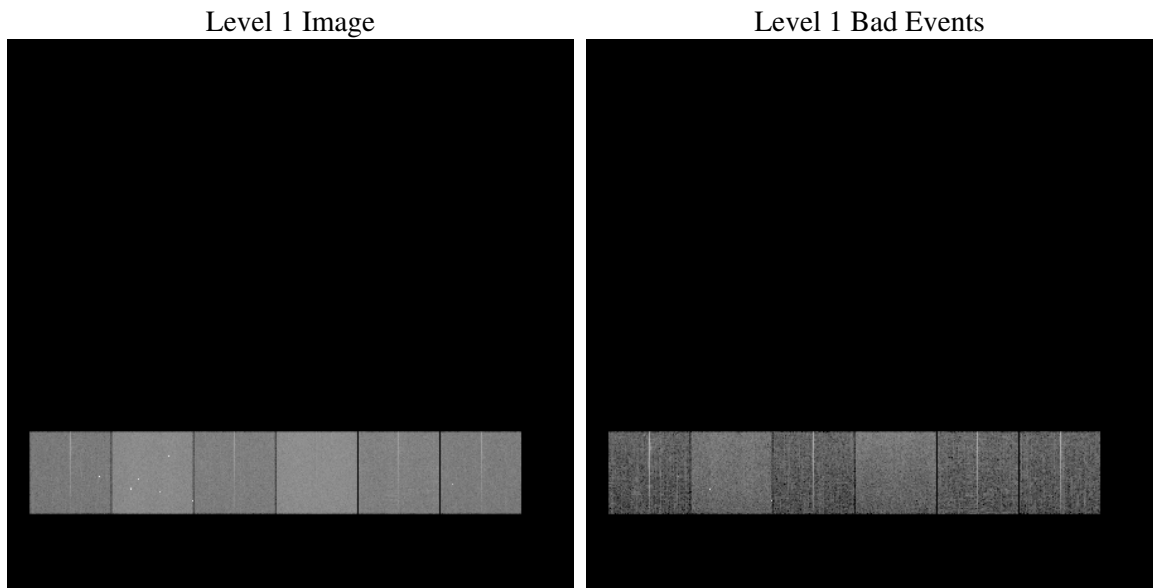
1 Front

seq_num	
obs_id	60250
title	ACIS-456789 diagnostics
observer	CHANDRA engineering request/realtime commanding
object	
dtcycle	0
cycle	P
ra_targ	0.0
dec_targ	0.0
ra_nom	219.97797686342
dec_nom	-7.0183939687374
roll_nom	187.04465117291
revision	2
ontime	8342.3999689221
livetime	8236.7634773255
ontime4	5162.8973327875
ontime5	8342.3999689221
ontime6	5684.8017137349
ontime7	8342.3999689221
ontime8	5840.3688052595
ontime9	5460.904074043
l2events	1140248

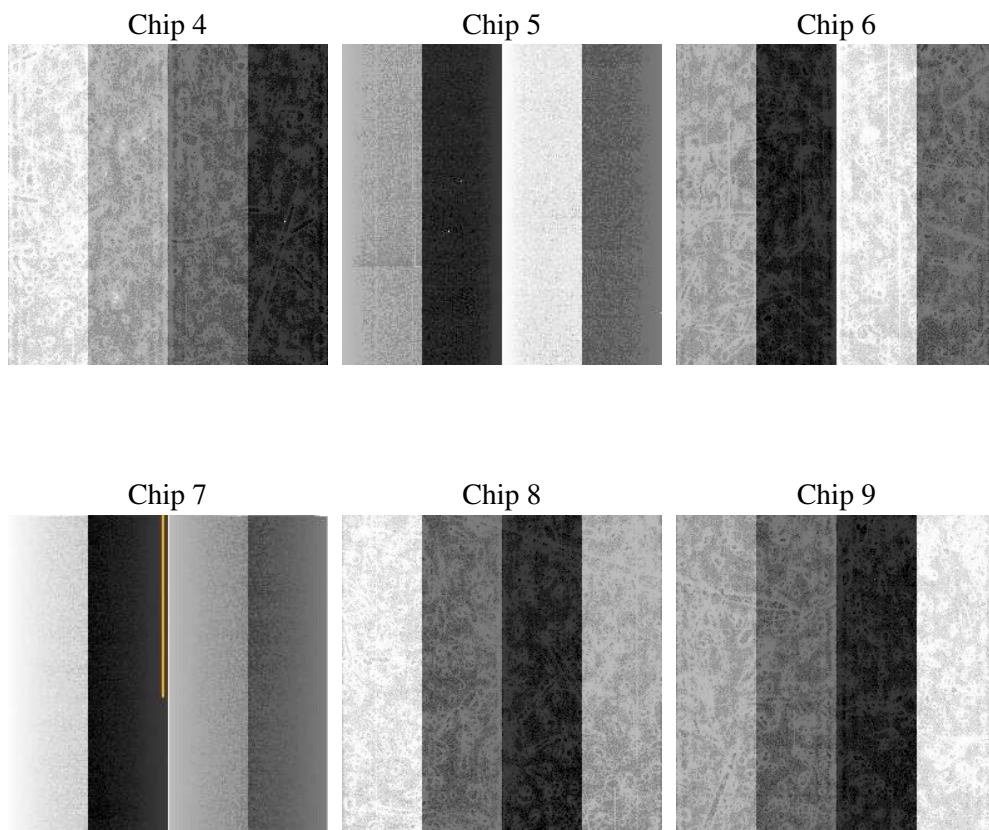
2 OBI

2.1 OBI

2.1.1 Images



2.1.2 Bias



2.1.3 Parameters

obi_num	0
ascdsver	7.6.7.2
caldbver	3.2.2
date	2006-05-20T17:27:22
revision	2

sched_exp_time	0.0
ontime	8459.0213727355
ontime4	5234.250597924
ontime5	8459.0213727355
ontime6	5762.5313644111
ontime7	8459.0213727355
ontime8	5901.8935647011
ontime9	5532.421539098
l1events	1531201

2.1.4 Events

	ccd 4	ccd 5	ccd 6	ccd 7	ccd 8	ccd 9
level 1 events	199376	316522	226598	332838	241534	214333
rejected events	44453	71339	44297	66223	49240	45677
rejected %	22%	22%	19%	19%	20%	21%

	ccd 4	ccd 5	ccd 6	ccd 7	ccd 8	ccd 9
grade 0 events	92461	28378	100410	44889	106069	94736
	46%	8%	44%	13%	43%	44%
grade 1 events	702	296	506	108	529	566
	0%	0%	0%	0%	0%	0%
grade 2 events	24167	116584	31908	83410	34143	28811
	12%	36%	14%	25%	14%	13%
grade 3 events	10554	7658	11423	18653	12626	10946
	5%	2%	5%	5%	5%	5%
grade 4 events	10327	7335	11586	18543	12431	10884
	5%	2%	5%	5%	5%	5%
grade 5 events	2400	7232	2814	7341	3384	2918
	1%	2%	1%	2%	1%	1%
grade 6 events	19560	88601	29406	104869	29072	25545
	9%	27%	12%	31%	12%	11%
grade 7 events	39205	60438	38545	55025	43280	39927
	19%	19%	17%	16%	17%	18%

2.2 Compared Parameters

Parameter	Planned	Actual	Parameter	Planned	Actual
Instrument	ACIS	ACIS	Obspar format version number	6	6
Detector	ACIS-456789	ACIS-456789	Obspar file type	PREDICTED	ACTUAL
Grating	NONE	NONE	Obspar update status	NONE	UPDATED
Data mode	FAINT	FAINT	On-chip summing requested	N	N
Observation mode	SECONDARY	SECONDARY	Subarray requested	NONE	NONE
Pointing RA	0	219.9779768634216	Alternating exposures requested	N	N
Pointing Dec	0	-7.018393968737377	Primary exposure time	0.000000	3.2
Pointing Roll	0.0	187.0446511729071			
SIM focus pos (mm)	-0.684267	-0.6828225247311905			
SIM defocus (mm)	0	0.8505141146731063			
SIM translation stage pos (mm)	-190.132523	250.466033080201			
SIM translation stage offset (mm)	0	-0.01005468664627074			
Observation start time	199933428.0013	199933426.97629			
Observation start date	2004-05-03T01:03:48	2004-05-03T01:03:46			
Observation end time	199956900.502335	199956899.47732			
Observation end date	2004-05-03T07:35:01	2004-05-03T07:34:59			
Read mode	TIMED	TIMED			

2.3 Aspect

2.4 Star Slots

2.5 FID Slots

A Summary

A.1 Status

V&V Scientist	Beth Sundheim
V&V Date (YYYY-MM-DD)	2006.05.21
V&V Edition	1
V&V Disposition and Status	OK
V&V Charge Time	8.34239996

A.2 Comments