

# V&V Reference Report

## L2 ASCDS Version : 7.6.7.2

Observation 60243 - L2 Version 001  
Chandra X-Ray Center

L2 Processing Date : May 18 2006

## Contents

<b>1</b>	<b>Front</b>	<b>2</b>
<b>2</b>	<b>OBI</b>	<b>3</b>
2.1	OBI . . . . .	3
2.1.1	Images . . . . .	3
2.1.2	Bias . . . . .	3
2.1.3	Parameters . . . . .	4
2.1.4	Events . . . . .	4
2.2	Compared Parameters . . . . .	5
2.3	Aspect . . . . .	6
2.4	Star Slots . . . . .	8
2.5	FID Slots . . . . .	8
<b>A</b>	<b>Summary</b>	<b>9</b>
A.1	Status . . . . .	9
A.2	Comments . . . . .	9

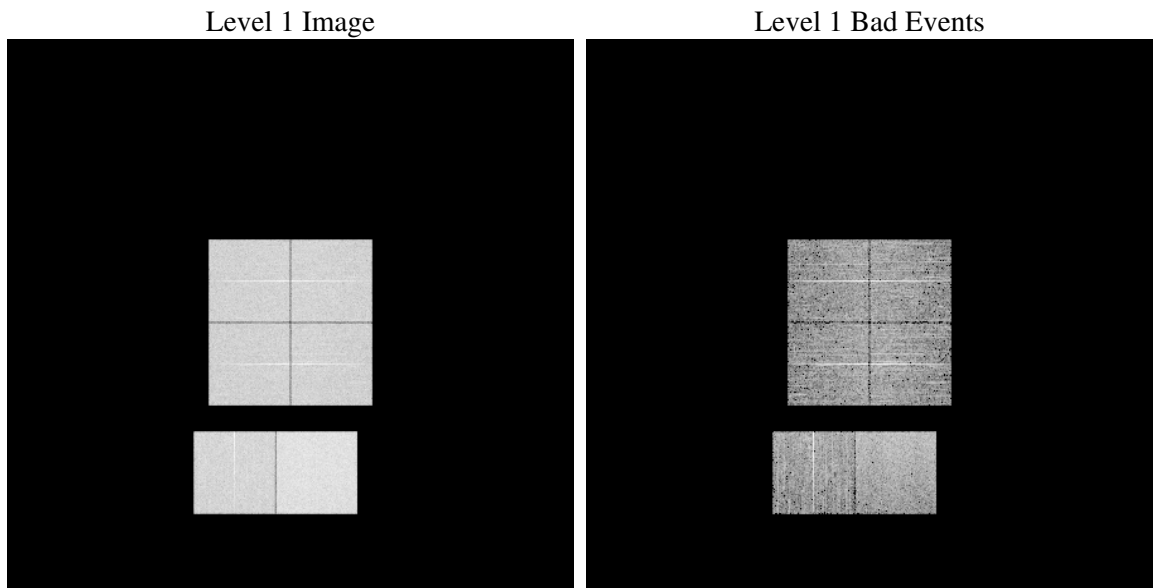
# 1 Front

seq_num	&#160
obs_id	60243
title	ACIS-012367 diagnostics
observer	CHANDRA engineering request/realtime commanding
object	&#160
dtcycle	0
cycle	P
ra_targ	0.0
dec_targ	0.0
ra_nom	219.98530578314
dec_nom	-7.0246267482864
roll_nom	206.32232101884
revision	2
ontime	5832.713781774
livetime	5758.8564478306
ontime0	4332.1838007867
ontime1	4341.9471544027
ontime2	4157.2527373731
ontime3	4144.1247974634
ontime6	4474.9098332226
ontime7	5832.713781774
l2events	830301

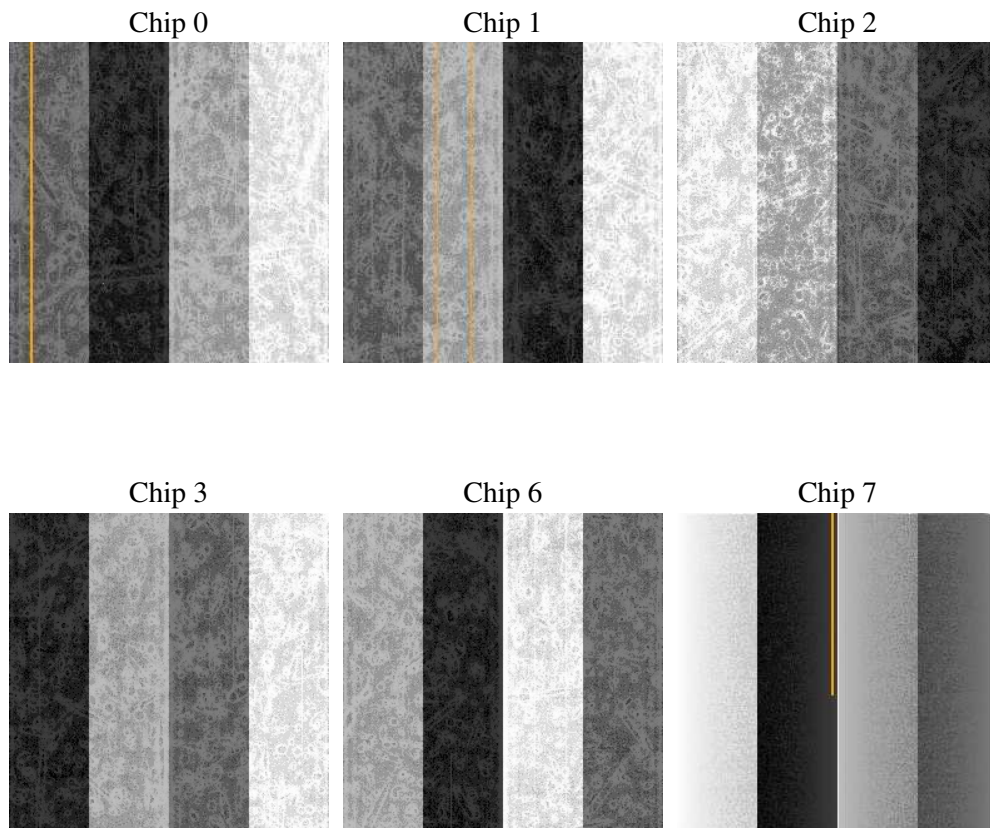
## 2 OBI

### 2.1 OBI

#### 2.1.1 Images



#### 2.1.2 Bias



### 2.1.3 Parameters

obi_num	0
ascdsver	7.6.7.2
caldsver	3.2.2
date	2006-05-19T01:20:23
revision	2

sched_exp_time	0.0
ontime	5833.8099971414
ontime0	4333.2389761508
ontime1	4342.9612897635
ontime2	4158.2258327305
ontime3	4145.262052834
ontime6	4475.8418886065
ontime7	5833.8099971414
l1events	1065203

### 2.1.4 Events

	ccd 0	ccd 1	ccd 2	ccd 3	ccd 6	ccd 7
level 1 events	163709	165899	160522	162545	178979	233549
rejected events	28487	30270	29415	31702	32442	41700
rejected %	17%	18%	18%	19%	18%	17%

	ccd 0	ccd 1	ccd 2	ccd 3	ccd 6	ccd 7
grade 0 events	74015	73821	73418	73277	79312	33439
	45%	44%	45%	45%	44%	14%
grade 1 events	421	367	431	458	423	90
	0%	0%	0%	0%	0%	0%
grade 2 events	23693	24242	22024	22419	25256	58139
	14%	14%	13%	13%	14%	24%
grade 3 events	8804	8759	8597	8422	9084	13915
	5%	5%	5%	5%	5%	5%
grade 4 events	8946	8602	8570	8572	9240	13611
	5%	5%	5%	5%	5%	5%
grade 5 events	1949	1916	1774	1946	2198	5001
	1%	1%	1%	1%	1%	2%
grade 6 events	19764	20205	18498	18153	23645	72745
	12%	12%	11%	11%	13%	31%
grade 7 events	26117	27987	27210	29298	29821	36609
	15%	16%	16%	18%	16%	15%

## 2.2 Compared Parameters

Parameter	Planned	Actual	Parameter	Planned	Actual
Instrument	ACIS	ACIS	Obspar format version number	6	6
Detector	ACIS-012367	ACIS-012367	Obspar file type	PREDICTED	ACTUAL
Grating	NONE	NONE	Obspar update status	NONE	UPDATED
Data mode	FAINT	FAINT	On-chip summing requested	N	N
Observation mode	SECONDARY	SECONDARY	Subarray requested	NONE	NONE
Pointing RA	0	219.9853057831444	Alternating exposures requested	N	N
Pointing Dec	0	-7.0246267482864	Primary exposure time	0.000000	3.2
Pointing Roll	0.0	206.3223210188383			
SIM focus pos (mm)	-0.782348	-0.6828225247311905			
SIM defocus (mm)	0	0.8505141146731063			
SIM translation stage pos (mm)	-233.592463	250.466033080201			
SIM translation stage offset (mm)	0	-0.01005468664627074			
Observation start time	200357585.320021	200357584.29499			
Observation start date	2004-05-07T22:53:05	2004-05-07T22:53:04			
Observation end time	200371045.620615	200371044.59558			
Observation end date	2004-05-08T02:37:26	2004-05-08T02:37:24			
Read mode	TIMED	TIMED			

## 2.3 Aspect



## **2.4 Star Slots**

## **2.5 FID Slots**



## A Summary

### A.1 Status

V&V Scientist	Jen Lauer
V&V Date (YYYY-MM-DD)	2006.05.19
V&V Edition	1
V&V Disposition and Status	OK
V&V Charge Time	5.83271378

### A.2 Comments