

V&V Reference Report

L2 ASCDS Version : 7.6.7.2

Observation 60233 - L2 Version 001
Chandra X-Ray Center

L2 Processing Date : May 18 2006

Contents

1	Front	2
2	OBI	3
2.1	OBI	3
2.1.1	Images	3
2.1.2	Bias	3
2.1.3	Parameters	4
2.1.4	Events	4
2.2	Compared Parameters	5
2.3	Aspect	6
2.4	Star Slots	8
2.5	FID Slots	8
A	Summary	9
A.1	Status	9
A.2	Comments	9

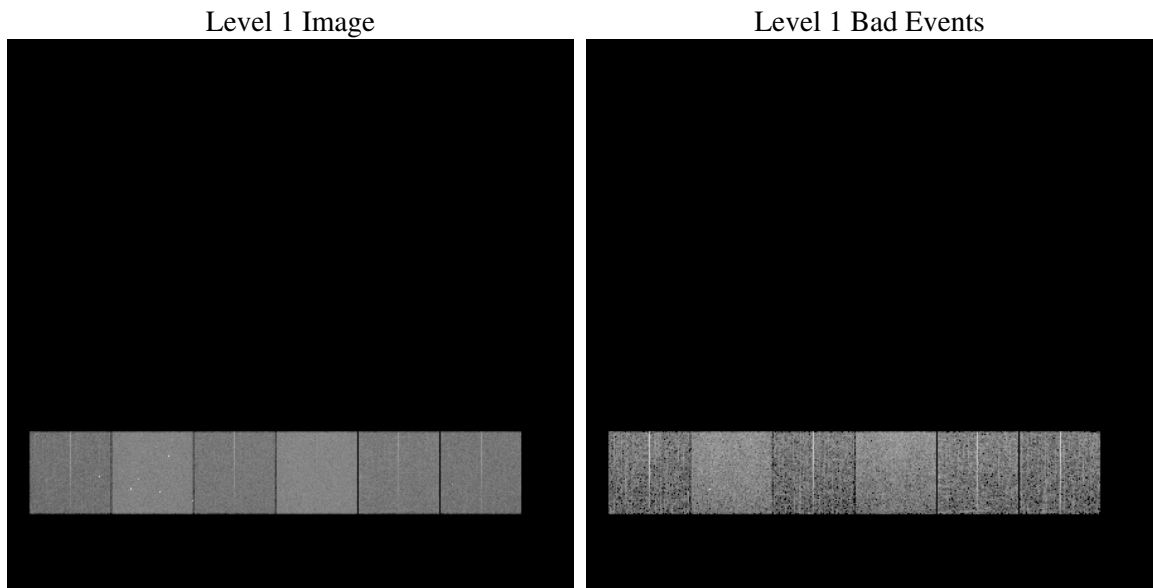
1 Front

seq_num	
obs_id	60233
title	ACIS-456789 diagnostics
observer	CHANDRA engineering request/realtime commanding
object	
dtcycle	0
cycle	P
ra_targ	0.0
dec_targ	0.0
ra_nom	195.04387187862
dec_nom	-53.011020026728
roll_nom	304.47509775437
revision	2
ontime	4796.7999821305
livetime	4736.0600124706
ontime4	3015.5535447598
ontime5	4796.7999821305
ontime6	3338.3650079668
ontime7	4796.7999821305
ontime8	3357.810421437
ontime9	3222.8120296597
l2events	662739

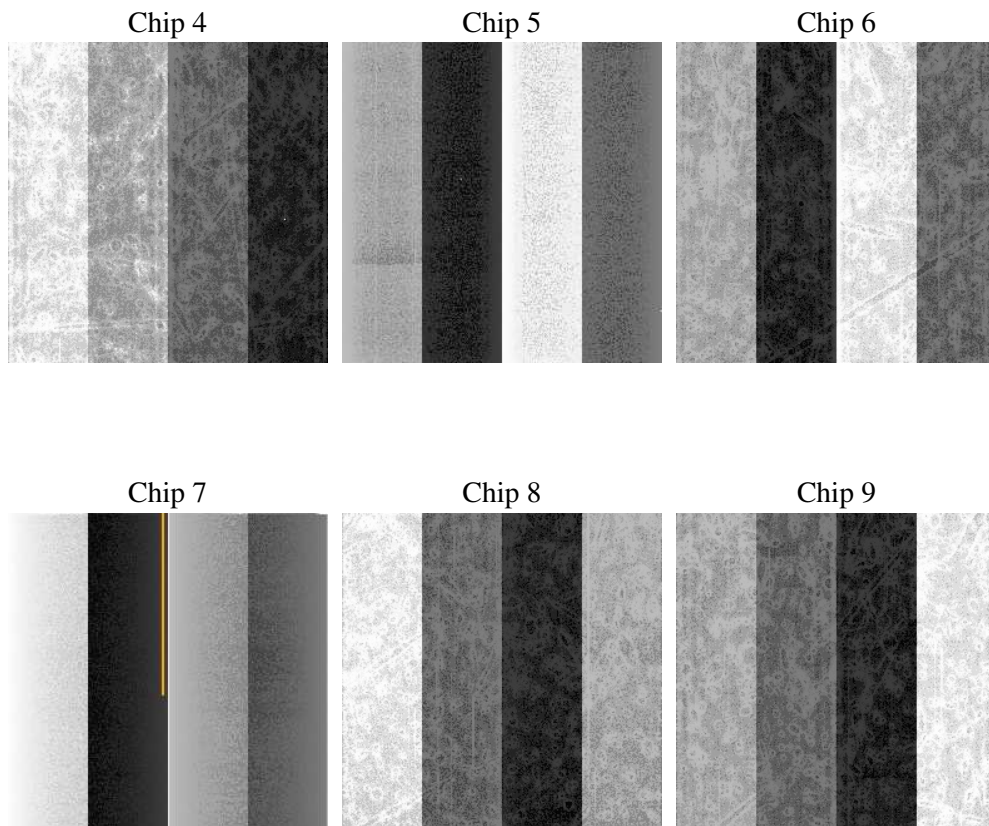
2 OBI

2.1 OBI

2.1.1 Images



2.1.2 Bias



2.1.3 Parameters

obi_num	0
ascdsver	7.6.7.2
caldsver	3.2.2
date	2006-05-18T06:46:46
revision	2

sched_exp_time	0.0
ontime	4799.9220818877
ontime4	3017.3890554309
ontime5	4799.9220818877
ontime6	3341.487107724
ontime7	4799.9220818877
ontime8	3360.9325211942
ontime9	3224.8117003441
l1events	880043

2.1.4 Events

	ccd 4	ccd 5	ccd 6	ccd 7	ccd 8	ccd 9
level 1 events	115429	179931	132128	189108	138713	124734
rejected events	24920	38103	24554	35477	28409	24928
rejected %	21%	21%	18%	18%	20%	19%

	ccd 4	ccd 5	ccd 6	ccd 7	ccd 8	ccd 9
grade 0 events	52502	18008	58553	26078	59609	55124
	45%	10%	44%	13%	42%	44%
grade 1 events	388	78	328	69	312	319
	0%	0%	0%	0%	0%	0%
grade 2 events	14501	65840	18555	46743	19316	17001
	12%	36%	14%	24%	13%	13%
grade 3 events	6047	4452	6813	10923	7321	6552
	5%	2%	5%	5%	5%	5%
grade 4 events	5993	4435	6631	10482	7262	6406
	5%	2%	5%	5%	5%	5%
grade 5 events	1389	3761	1645	4201	1949	1690
	1%	2%	1%	2%	1%	1%
grade 6 events	11537	49172	17131	59515	16901	14822
	9%	27%	12%	31%	12%	11%
grade 7 events	23072	34185	22472	31097	26043	22820
	19%	18%	17%	16%	18%	18%

2.2 Compared Parameters

Parameter	Planned	Actual	Parameter	Planned	Actual
Instrument	ACIS	ACIS	Obspar format version number	6	6
Detector	ACIS-456789	ACIS-456789	Obspar file type	PREDICTED	ACTUAL
Grating	NONE	NONE	Obspar update status	NONE	UPDATED
Data mode	FAINT	FAINT	On-chip summing requested	N	N
Observation mode	SECONDARY	SECONDARY	Subarray requested	NONE	NONE
Pointing RA	0	195.0438718786219	Alternating exposures requested	N	N
Pointing Dec	0	-53.01102002672796	Primary exposure time	0.000000	3.2
Pointing Roll	0.0	304.4750977543721			
SIM focus pos (mm)	-0.684267	-0.7809083437167272			
SIM defocus (mm)	0	0.7524282956875696			
SIM translation stage pos (mm)	-190.132523	250.466033080201			
SIM translation stage offset (mm)	0	-0.01005468664627074			
Observation start time	201043986.850275	201043985.82529			
Observation start date	2004-05-15T21:33:07	2004-05-15T21:33:05			
Observation end time	201079337.051835	201079336.02685			
Observation end date	2004-05-16T07:22:17	2004-05-16T07:22:16			
Read mode	TIMED	TIMED			

2.3 Aspect

2.4 Star Slots

2.5 FID Slots

A Summary

A.1 Status

V&V Scientist	Jen Lauer
V&V Date (YYYY-MM-DD)	2006.05.18
V&V Edition	1
V&V Disposition and Status	OK
V&V Charge Time	4.79679998

A.2 Comments