

V&V Reference Report

L2 ASCDS Version : 8.4.5

Observation 60229 - L2 Version 3
Chandra X-Ray Center

L2 Processing Date : Dec 1 2012

Contents

1	Front	2
2	OBI Primary	3
2.1	OBI	3
2.1.1	Images	3
2.1.2	Bias	3
2.1.3	Parameters	4
2.1.4	Events	4
2.2	Compared Parameters	5
2.3	Star Slots	6
2.4	FID Slots	6
3	OBI Secondary	6
3.1	OBI	6
3.1.1	Images	6
3.1.2	Bias	6
3.1.3	Parameters	7
3.1.4	Events	7
A	Summary	8
A.1	Status	8
A.2	Comments	8

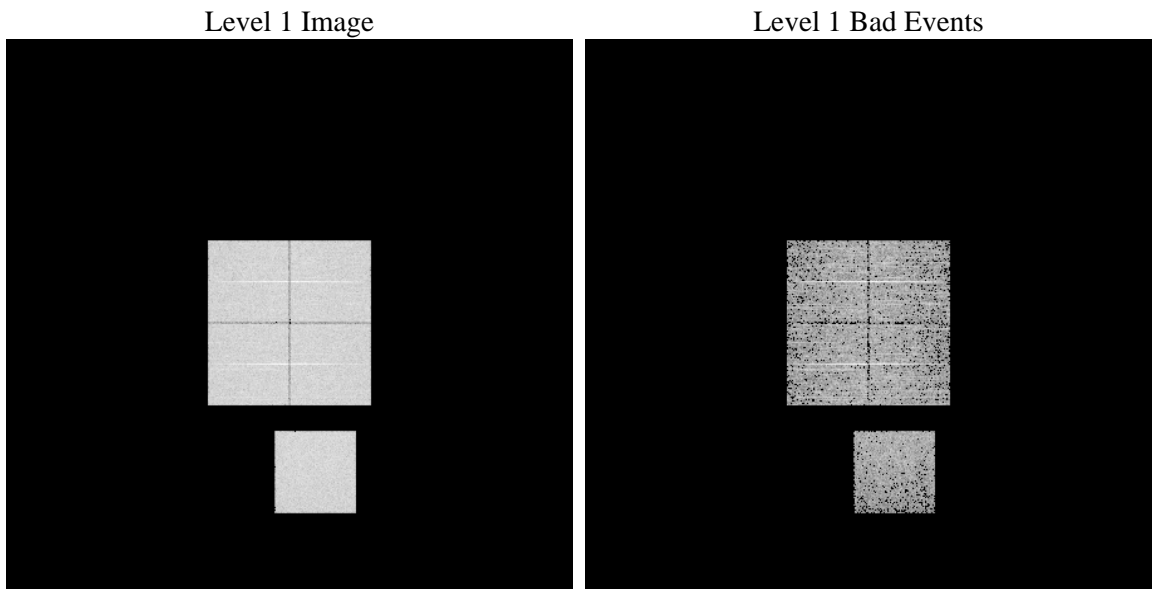
1 Front

seq_num	 	Sequence number
obs_id	60229	Observation id
title	ACIS-01237 diagnostics	Proposal title
observer	CHANDRA engineering request/realtime commanding	Principal investig
object	 	Source name
dtcycle	0	
cycle	P	events are from which exps? P[rimary] S[econdar
ra_targ	0.0	Observer's specified target RA [deg]
dec_targ	0.0	Observer's specified target Dec [deg]
ra_nom	108.00058011342	Nominal RA [deg]
dec_nom	-13.028606394419	Nominal Dec [deg]
roll_nom	238.27378590464	Nominal Roll [deg]
revision	3	Processing version of data
ontime	5196.863281548	Sum of GTIs [s]
livetime	2010.298663717	Livetime [s]
ontime0	5196.8632816076	Sum of GTIs [s]
ontime1	5196.8632816076	Sum of GTIs [s]
ontime2	5196.8633114994	Sum of GTIs [s]
ontime3	5196.863281548	Sum of GTIs [s]
ontime7	5196.863281548	Sum of GTIs [s]
l2events	308320	Number of level 2 events

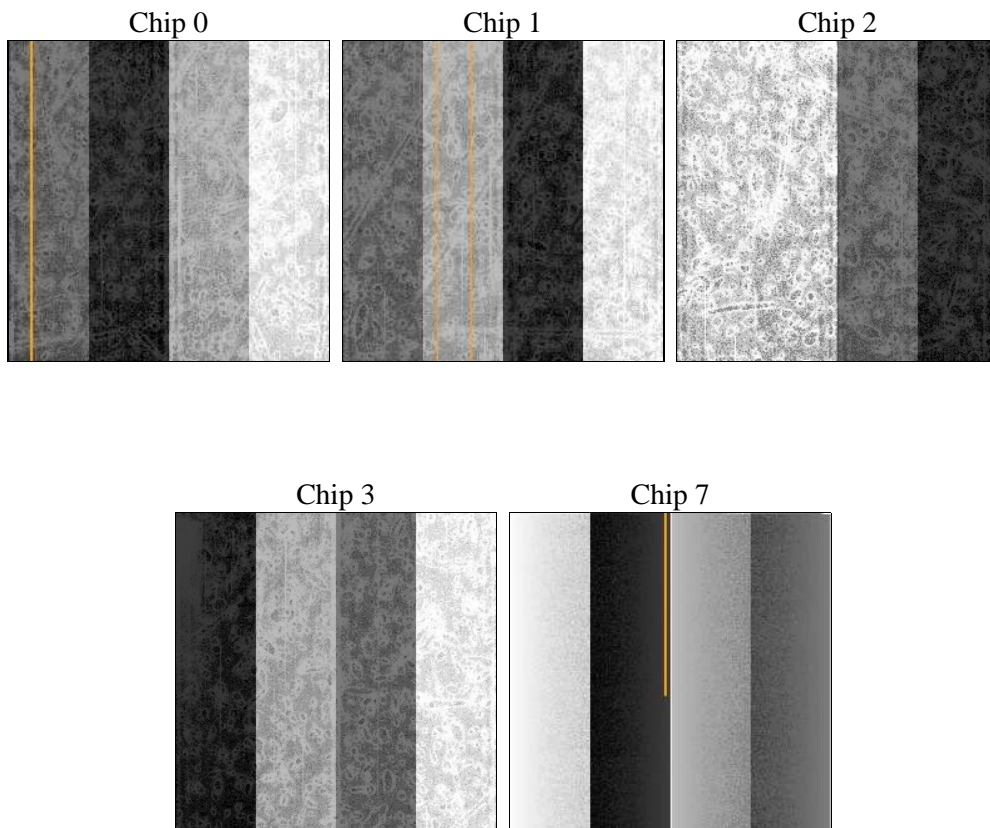
2 OBI Primary

2.1 OBI

2.1.1 Images



2.1.2 Bias



2.1.3 Parameters

obi_num	0	Obi number	sched_exp_time	0.0	[s] Scheduled observation exposure time
ascdsver	8.4.5	Processing system revision	ontime	5196.863281548	Sum of GTIs [s]
caldsver	4.5.2	 	ontime0	5196.8632816076	Sum of GTIs [s]
date	2012-12-01T12:26:58	Date and time of file creation	ontime1	5196.8632816076	Sum of GTIs [s]
revision	3	Processing version of data	ontime2	5196.8633114994	Sum of GTIs [s]
			ontime3	5196.863281548	Sum of GTIs [s]
			ontime7	5196.863281548	Sum of GTIs [s]
			l1events	413831	Number of level 1 events

2.1.4 Events

	ccd 0	ccd 1	ccd 2	ccd 3	ccd 7
level 1 events	81240	82292	83694	82740	83865
rejected events	17731	18559	19382	18435	15056
rejected %	21%	22%	23%	22%	17%

	ccd 0	ccd 1	ccd 2	ccd 3	ccd 7
grade 0 events	35082	34714	35969	36150	17069
	43%	42%	42%	43%	20%
grade 1 events	163	155	181	166	41
	0%	0%	0%	0%	0%
grade 2 events	11020	11320	11038	11031	15216
	13%	13%	13%	13%	18%
grade 3 events	4143	4245	4262	4151	6997
	5%	5%	5%	5%	8%
grade 4 events	4103	4188	4150	4259	6943
	5%	5%	4%	5%	8%
grade 5 events	1013	1042	1000	1057	2476
	1%	1%	1%	1%	2%
grade 6 events	9161	9266	8893	8714	22584
	11%	11%	10%	10%	26%
grade 7 events	16555	17362	18201	17212	12539
	20%	21%	21%	20%	14%

2.2 Compared Parameters

Parameter	Planned	Actual	Parameter	Planned	Actual
Instrument	ACIS	ACIS	Obspar format version number	7	7
Detector	ACIS-01237	ACIS-01237	Obspar file type	PREDICTED	ACTUAL
Grating	NONE	NONE	Obspar update status	NONE	UPDATED
Data mode	FAINT	FAINT	On-chip summing requested	N	N
Observation mode	SECONDARY	SECONDARY	Subarray requested	NONE	NONE
[deg] Pointing RA	0	108.0005801134191	Alternating exposures requested	N	Y
[deg] Pointing Dec	0	-13.02860639441852	[s] Primary exposure time	0.000000	2
[deg] Pointing Roll	0.0	238.2737859046372	[s] Secondary exposure time	N/A	3.2
[mm] SIM focus pos	-0.782348	-0.6828225247311905	Duty cycle	N/A	1
[mm] SIM defocus	0	0.8505141146731063			
[mm] SIM translation stage pos	-233.592463	250.466033080201			
[mm] SIM translation stage offset	0	-0.01005468664627074			
[s] Observation start time (MET)	201303283.161743	201303282.13674			
Observation start date	2004-05-18T21:34:43	2004-05-18T21:34:42			
[s] Observation end time (MET)	201326435.862766	201326434.83777			
Observation end date	2004-05-19T04:00:36	2004-05-19T04:00:34			
Read mode	TIMED	TIMED			

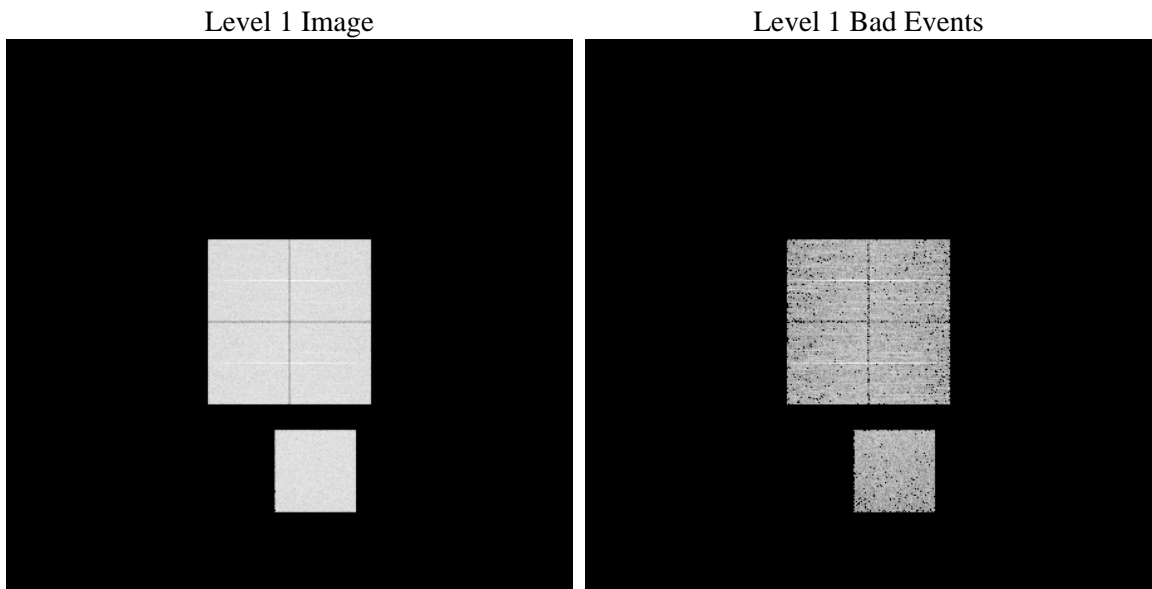
2.3 Star Slots

2.4 FID Slots

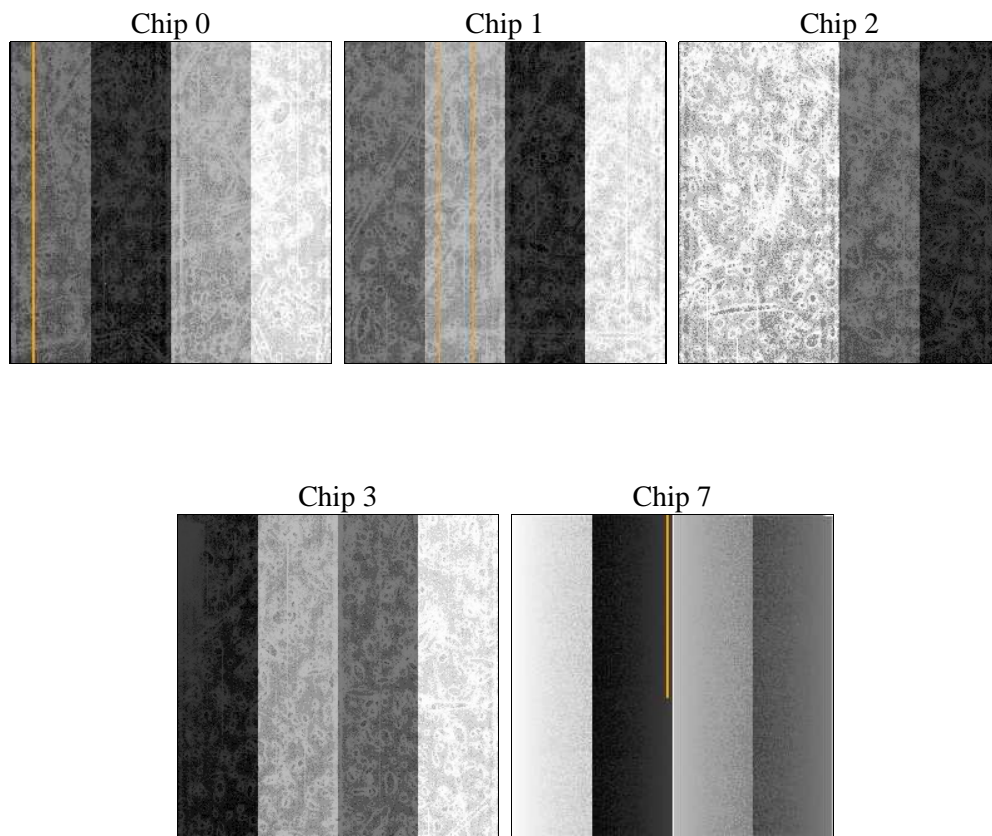
3 OBI Secondary

3.1 OBI

3.1.1 Images



3.1.2 Bias



3.1.3 Parameters

obi_num	0	Obi number	sched_exp_time	0.0	[s] Scheduled observation exposure time
ascdsver	8.4.5	Processing system revision	ontime	3258.0172381401	Sum of GTIs [s]
caldbver	4.5.2	 	ontime0	3258.017367661	Sum of GTIs [s]
date	2012-12-01T12:28:19	Date and time of file creation	ontime1	3258.0172381401	Sum of GTIs [s]
revision	3	Processing version of data	ontime2	3258.0172580481	Sum of GTIs [s]
			ontime3	3258.0172580481	Sum of GTIs [s]
			ontime7	3258.0172381401	Sum of GTIs [s]
			l1events	621995	Number of level 1 events

3.1.4 Events

	ccd 0	ccd 1	ccd 2	ccd 3	ccd 7
level 1 events	121599	122871	124776	124787	127962
rejected events	22863	23204	24887	24490	19518
rejected %	18%	18%	19%	19%	15%

	ccd 0	ccd 1	ccd 2	ccd 3	ccd 7
grade 0 events	54463	54758	55765	56243	25993
	44%	44%	44%	45%	20%
grade 1 events	357	281	337	345	84
	0%	0%	0%	0%	0%
grade 2 events	17245	17728	16864	17148	23852
	14%	14%	13%	13%	18%
grade 3 events	6267	6439	6592	6603	10846
	5%	5%	5%	5%	8%
grade 4 events	6515	6413	6598	6580	10679
	5%	5%	5%	5%	8%
grade 5 events	1426	1529	1440	1554	3564
	1%	1%	1%	1%	2%
grade 6 events	14350	14422	14168	13824	37168
	11%	11%	11%	11%	29%
grade 7 events	20976	21301	23012	22490	15776
	17%	17%	18%	18%	12%

A Summary

A.1 Status

V&V Scientist	Beth Sundheim
V&V Date (YYYY-MM-DD)	2012.12.06
V&V Edition	1
V&V Disposition and Status	OK
V&V Charge Time	8.4548805196881

A.2 Comments