

# V&V Reference Report

## L2 ASCDS Version : 7.6.7.2

Observation 60209 - L2 Version 001  
Chandra X-Ray Center

L2 Processing Date : May 1 2006

## Contents

<b>1</b>	<b>Front</b>	<b>2</b>
<b>2</b>	<b>OBI</b>	<b>3</b>
2.1	OBI . . . . .	3
2.1.1	Images . . . . .	3
2.1.2	Bias . . . . .	3
2.1.3	Parameters . . . . .	4
2.1.4	Events . . . . .	4
2.2	Compared Parameters . . . . .	5
2.3	Aspect . . . . .	6
2.4	Star Slots . . . . .	8
2.5	FID Slots . . . . .	8
<b>A</b>	<b>Summary</b>	<b>9</b>
A.1	Status . . . . .	9
A.2	Comments . . . . .	9

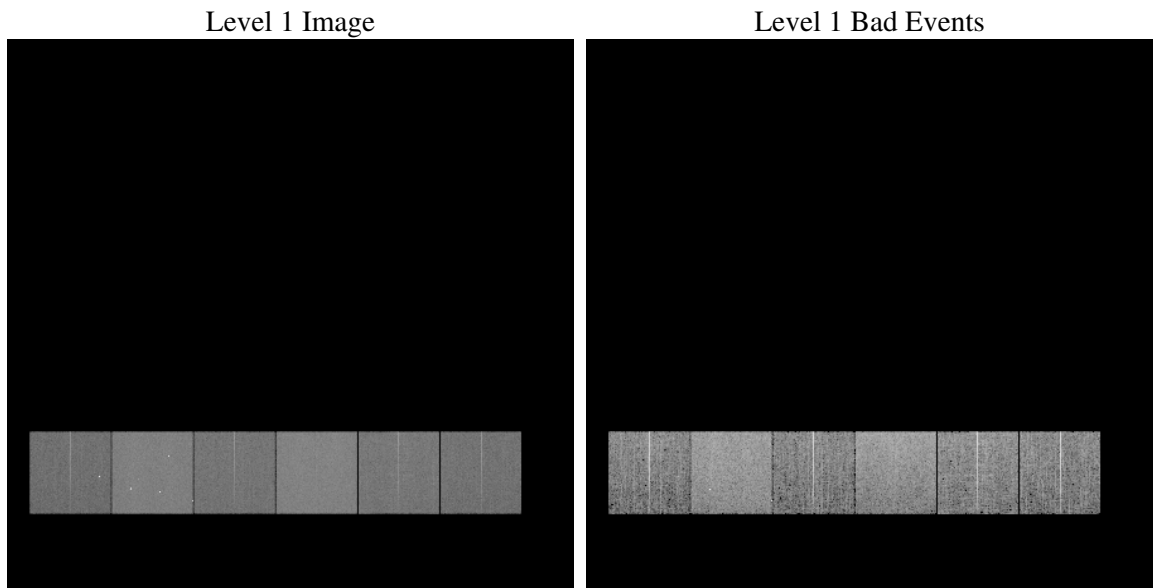
# 1 Front

seq_num	&#160
obs_id	60209
title	ACIS-456789 diagnostics
observer	CHANDRA engineering request/realtime commanding
object	&#160
dtcycle	0
cycle	P
ra_targ	0.0
dec_targ	0.0
ra_nom	303.97085185004
dec_nom	22.009327727259
roll_nom	128.07359682839
revision	2
ontime	8271.9999691844
livetime	8167.2549247742
ontime4	5177.6424371898
ontime5	8271.9999691844
ontime6	5731.8091079593
ontime7	8271.9999691844
ontime8	5909.3324996233
ontime9	5449.7208667994
l2events	1125044

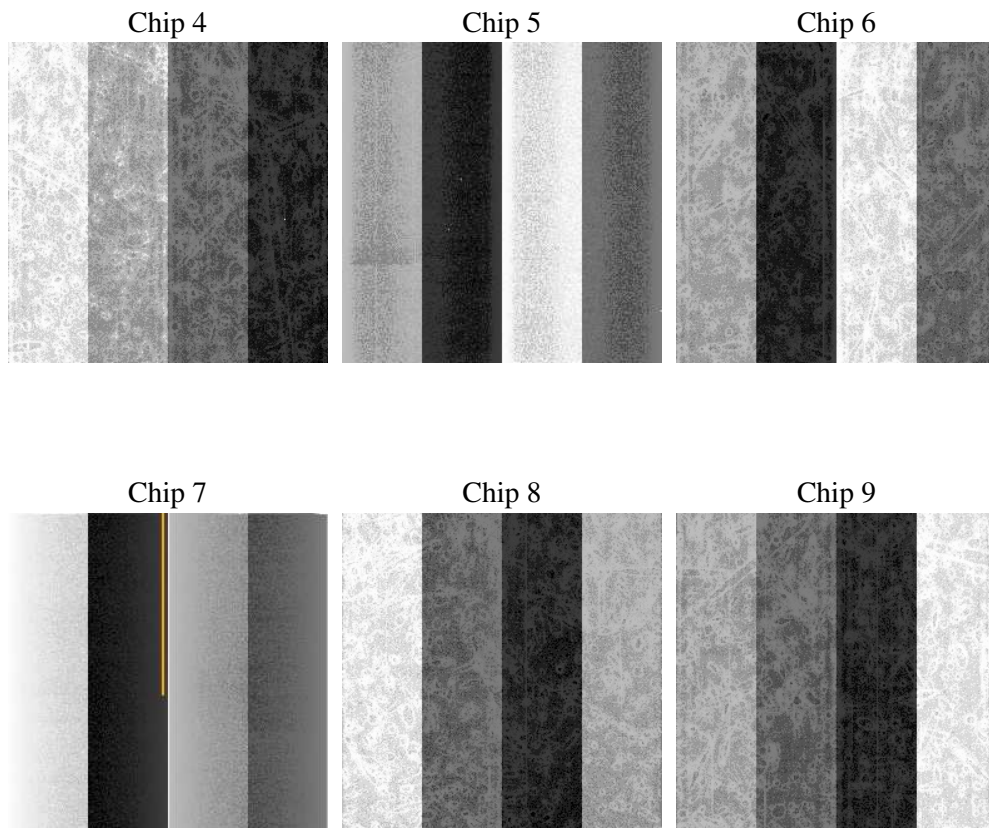
## 2 OBI

### 2.1 OBI

#### 2.1.1 Images



#### 2.1.2 Bias



### 2.1.3 Parameters

obi_num	0
ascdsver	7.6.7.2
caldsver	3.2.1
date	2006-05-01T20:23:21
revision	2

sched_exp_time	0.0
ontime	8277.5206657946
ontime4	5179.1513488591
ontime5	8277.5206657946
ontime6	5736.6000996232
ontime7	8277.5206657946
ontime8	5914.8531962335
ontime9	5454.6349784732
l1events	1498648

### 2.1.4 Events

	ccd 4	ccd 5	ccd 6	ccd 7	ccd 8	ccd 9
level 1 events	194390	306717	223658	323778	240702	209403
rejected events	41443	66171	42261	61503	49952	43366
rejected %	21%	21%	18%	18%	20%	20%

	ccd 4	ccd 5	ccd 6	ccd 7	ccd 8	ccd 9
grade 0 events	89591	28946	98313	44869	103969	91507
	46%	9%	43%	13%	43%	43%
grade 1 events	709	202	477	131	597	579
	0%	0%	0%	0%	0%	0%
grade 2 events	23665	111698	31496	79840	33574	28375
	12%	36%	14%	24%	13%	13%
grade 3 events	10136	7249	11528	18539	12297	10636
	5%	2%	5%	5%	5%	5%
grade 4 events	10004	7202	11403	18671	12533	10796
	5%	2%	5%	5%	5%	5%
grade 5 events	2542	6529	2824	7342	3542	2992
	1%	2%	1%	2%	1%	1%
grade 6 events	19551	85538	28747	100549	28494	24916
	10%	27%	12%	31%	11%	11%
grade 7 events	38192	59353	38870	53837	45696	39602
	19%	19%	17%	16%	18%	18%

## 2.2 Compared Parameters

Parameter	Planned	Actual	Parameter	Planned	Actual
Instrument	ACIS	ACIS	Obspar format version number	6	6
Detector	ACIS-456789	ACIS-456789	Obspar file type	PREDICTED	ACTUAL
Grating	NONE	NONE	Obspar update status	NONE	UPDATED
Data mode	FAINT	FAINT	On-chip summing requested	N	N
Observation mode	SECONDARY	SECONDARY	Subarray requested	NONE	NONE
Pointing RA	0	303.9708518500425	Alternating exposures requested	N	N
Pointing Dec	0	22.00932772725933	Primary exposure time	0.000000	3.2
Pointing Roll	0.0	128.0735968283896			
SIM focus pos (mm)	-0.684267	-0.6828225247311905			
SIM defocus (mm)	0	0.8505141146731063			
SIM translation stage pos (mm)	-190.132523	250.466033080201			
SIM translation stage offset (mm)	0	-0.01005468664627074			
Observation start time	202685879.0728	202685878.0478			
Observation start date	2004-06-03T21:37:59	2004-06-03T21:37:58			
Observation end time	202696389.423264	202696388.39826			
Observation end date	2004-06-04T00:33:09	2004-06-04T00:33:08			
Read mode	TIMED	TIMED			

## 2.3 Aspect



## **2.4 Star Slots**

## **2.5 FID Slots**

## A Summary

### A.1 Status

V&V Scientist	Jen Lauer
V&V Date (YYYY-MM-DD)	2006.05.02
V&V Edition	1
V&V Disposition and Status	OK
V&V Charge Time	8.27199996

### A.2 Comments