

# V&V Reference Report

## L2 ASCDS Version : 8.4.5

Observation 60194 - L2 Version 3  
Chandra X-Ray Center

L2 Processing Date : Dec 3 2012

## Contents

<b>1</b>	<b>Front</b>	<b>2</b>
<b>2</b>	<b>OBI</b>	<b>3</b>
2.1	OBI . . . . .	3
2.1.1	Images . . . . .	3
2.1.2	Bias . . . . .	3
2.1.3	Parameters . . . . .	4
2.1.4	Events . . . . .	4
2.2	Compared Parameters . . . . .	5
2.3	Star Slots . . . . .	6
2.4	FID Slots . . . . .	6
<b>A</b>	<b>Summary</b>	<b>7</b>
A.1	Status . . . . .	7
A.2	Comments . . . . .	7

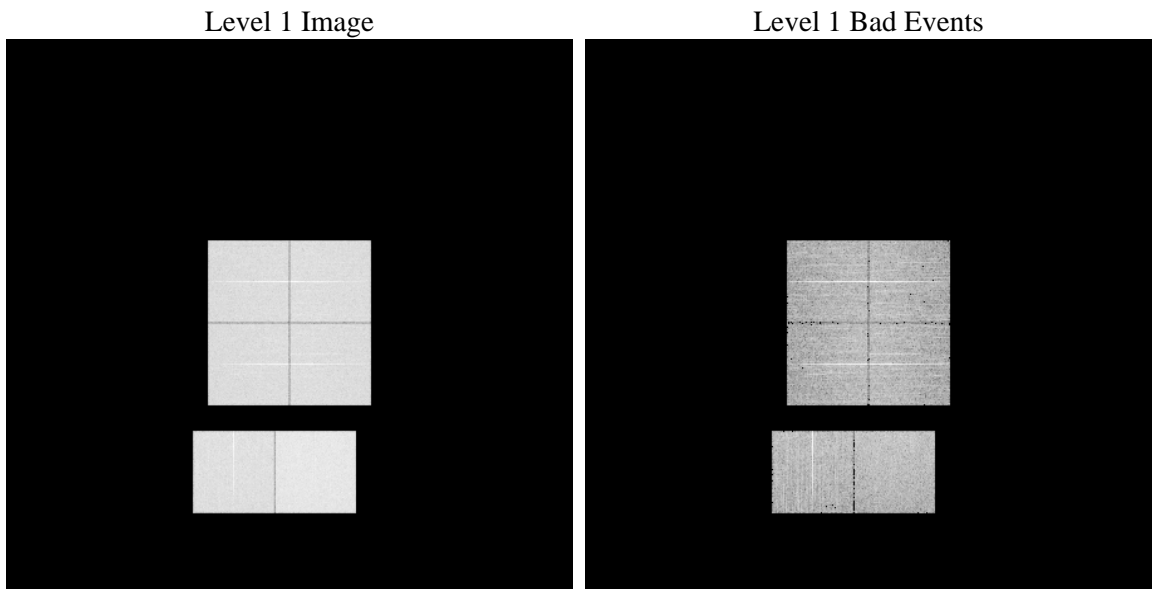
# 1 Front

seq_num	&#160	Sequence number
obs_id	60194	Observation id
title	ACIS-012367 diagnostics	Proposal title
observer	CHANDRA engineering request/realtime commanding	Principal investig
object	&#160	Source name
dtcycle	0	&#160
cycle	P	events from which exps? Prim/Second/Both
ra_targ	0.0	Observer's specified target RA [deg]
dec_targ	0.0	Observer's specified target Dec [deg]
ra_nom	302.99060433325	Nominal RA [deg]
dec_nom	-44.270590793936	Nominal Dec [deg]
roll_nom	70.587345865759	Nominal Roll [deg]
revision	3	Processing version of data
ontime	8277.8256109357	Sum of GTIs [s]
livetime	8173.0067987418	Livetime [s]
ontime0	6109.3170976043	Sum of GTIs [s]
ontime1	6362.3270256817	Sum of GTIs [s]
ontime2	6031.7072734237	Sum of GTIs [s]
ontime3	6135.5823132694	Sum of GTIs [s]
ontime6	6533.8852824271	Sum of GTIs [s]
ontime7	8277.8256109357	Sum of GTIs [s]
l2events	1161732	Number of level 2 events

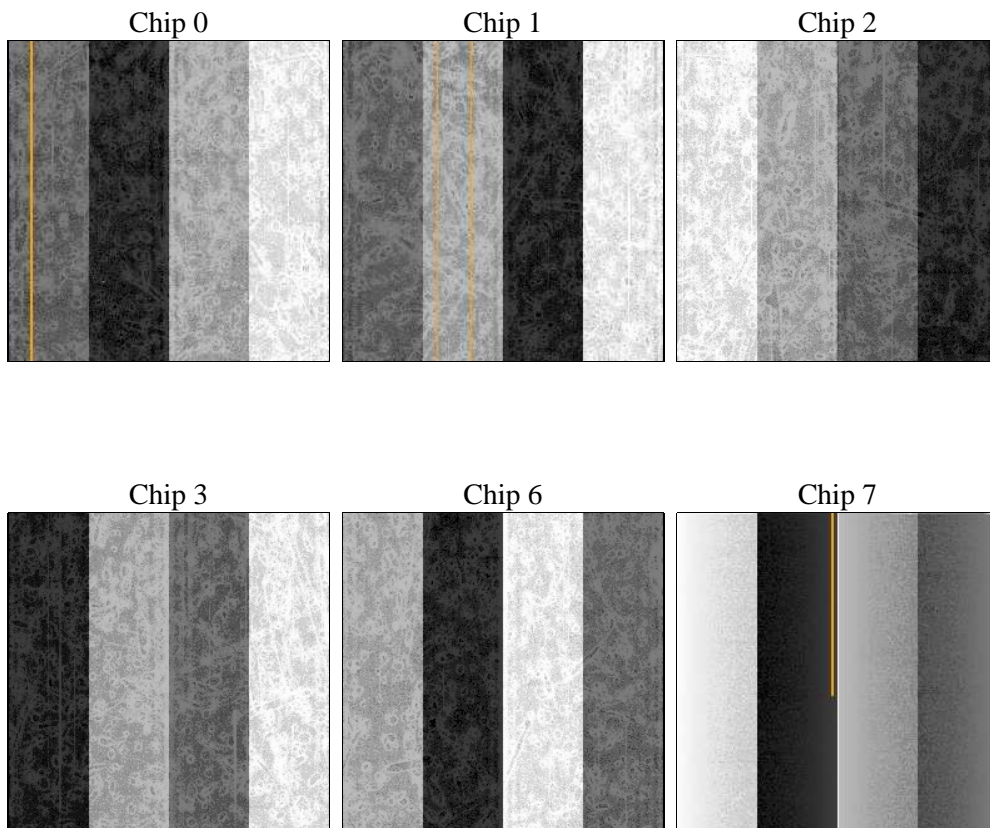
## 2 OBI

### 2.1 OBI

#### 2.1.1 Images



#### 2.1.2 Bias



### 2.1.3 Parameters

obi_num	0	Obi number	sched_exp_time	0.0	[s] Scheduled observation exposure time
ascdsver	8.4.5	Processing system revision	ontime	8277.8256109357	Sum of GTIs [s]
caldsver	4.5.2	&#160	ontime0	6109.3170976043	Sum of GTIs [s]
date	2012-12-03T09:19:18	Date and time of file creation	ontime1	6362.3270256817	Sum of GTIs [s]
revision	3	Processing version of data	ontime2	6031.7072734237	Sum of GTIs [s]
			ontime3	6135.5823132694	Sum of GTIs [s]
			ontime6	6533.8852824271	Sum of GTIs [s]
			ontime7	8277.8256109357	Sum of GTIs [s]
			l1events	1499808	Number of level 1 events

### 2.1.4 Events

	ccd 0	ccd 1	ccd 2	ccd 3	ccd 6	ccd 7		ccd 0	ccd 1	ccd 2	ccd 3	ccd 6	ccd 7
level 1 events	225753	235664	227014	232005	254925	324447	grade 0 events	99892	104696	102349	104270	111329	66268
rejected events	43893	45008	44320	46149	49912	51183		44%	44%	45%	44%	43%	20%
rejected %	19%	19%	19%	19%	19%	15%	grade 1 events	630	556	653	663	588	245
								0%	0%	0%	0%	0%	0%
							grade 2 events	31828	33864	30862	31521	35550	59779
								14%	14%	13%	13%	13%	18%
							grade 3 events	11803	12102	12000	12222	12779	27193
								5%	5%	5%	5%	5%	8%
							grade 4 events	11816	12038	12007	12298	12729	27253
								5%	5%	5%	5%	4%	8%
							grade 5 events	2831	2889	2656	2940	3169	9153
								1%	1%	1%	1%	1%	2%
							grade 6 events	26521	28058	25568	25644	32626	92877
								11%	11%	11%	11%	12%	28%
							grade 7 events	40432	41461	40919	42447	46155	41679
								17%	17%	18%	18%	18%	12%

## 2.2 Compared Parameters

Parameter	Planned	Actual	Parameter	Planned	Actual
Instrument	ACIS	ACIS	Obspar format version number	7	7
Detector	ACIS-012367	ACIS-012367	Obspar file type	PREDICTED	ACTUAL
Grating	NONE	NONE	Obspar update status	NONE	UPDATED
Data mode	FAINT	FAINT	On-chip summing requested	N	N
Observation mode	SECONDARY	SECONDARY	Subarray requested	NONE	NONE
[deg] Pointing RA	0	302.9906043332502	Alternating exposures requested	N	N
[deg] Pointing Dec	0	-44.27059079393629	[s] Primary exposure time	0.000000	3.2
[deg] Pointing Roll	0.0	70.58734586575912			
[mm] SIM focus pos	-0.782348	-0.6828225247311905			
[mm] SIM defocus	0	0.8505141146731063			
[mm] SIM translation stage pos	-233.592463	250.466033080201			
[mm] SIM translation stage offset	0	-0.01005468664627074			
[s] Observation start time (MET)	203591462.512867	203591461.48786			
Observation start date	2004-06-14T09:11:03	2004-06-14T09:11:01			
[s] Observation end time (MET)	203613910.013862	203613908.98885			
Observation end date	2004-06-14T15:25:10	2004-06-14T15:25:08			
Read mode	TIMED	TIMED			

## **2.3 Star Slots**

## **2.4 FID Slots**

## A Summary

### A.1 Status

V&V Scientist	Beth Sundheim
V&V Date (YYYY-MM-DD)	2012.12.23
V&V Edition	1
V&V Disposition and Status	OK
V&V Charge Time	8.2778256109357

### A.2 Comments