

V&V Reference Report

L2 ASCDS Version : 7.6.7.2

Observation 60194 - L2 Version 001
Chandra X-Ray Center

L2 Processing Date : May 1 2006

Contents

1	Front	2
2	OBI	3
2.1	OBI	3
2.1.1	Images	3
2.1.2	Bias	3
2.1.3	Parameters	4
2.1.4	Events	4
2.2	Compared Parameters	5
2.3	Aspect	6
2.4	Star Slots	8
2.5	FID Slots	8
A	Summary	9
A.1	Status	9
A.2	Comments	9

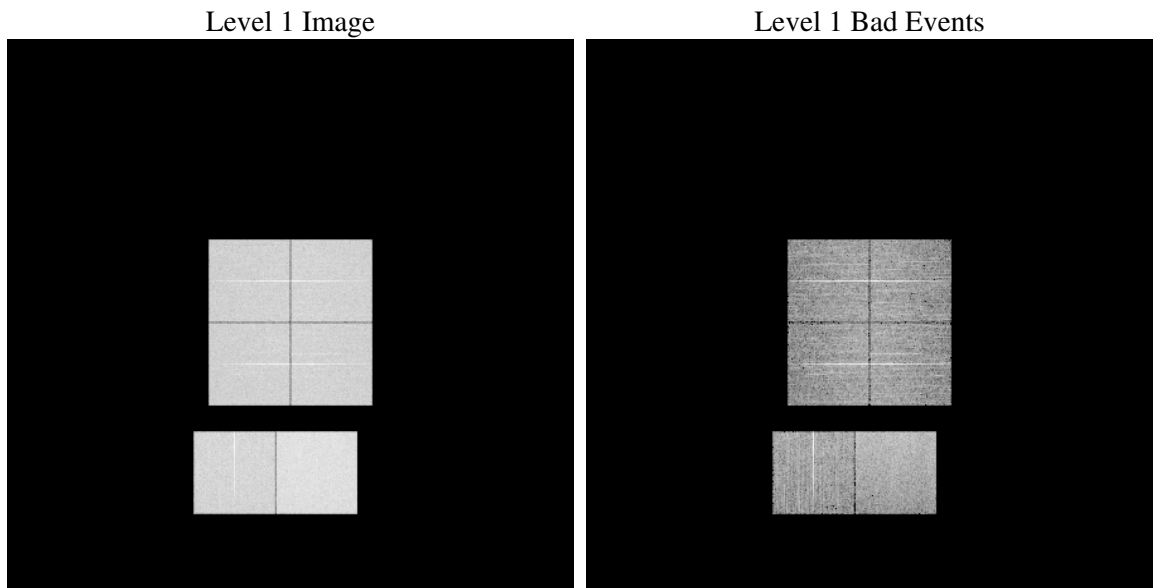
1 Front

seq_num	
obs_id	60194
title	ACIS-012367 diagnostics
observer	CHANDRA engineering request/realtime commanding
object	
dtcycle	0
cycle	P
ra_targ	0.0
dec_targ	0.0
ra_nom	302.99059139615
dec_nom	-44.270616981296
roll_nom	70.58733682698
revision	2
ontime	8278.3999691606
livetime	8173.573884097
ontime0	6108.3324958384
ontime1	6362.9834639132
ontime2	6032.4047516584
ontime3	6136.1156314909
ontime6	6533.0238006413
ontime7	8278.3999691606
l2events	1151511

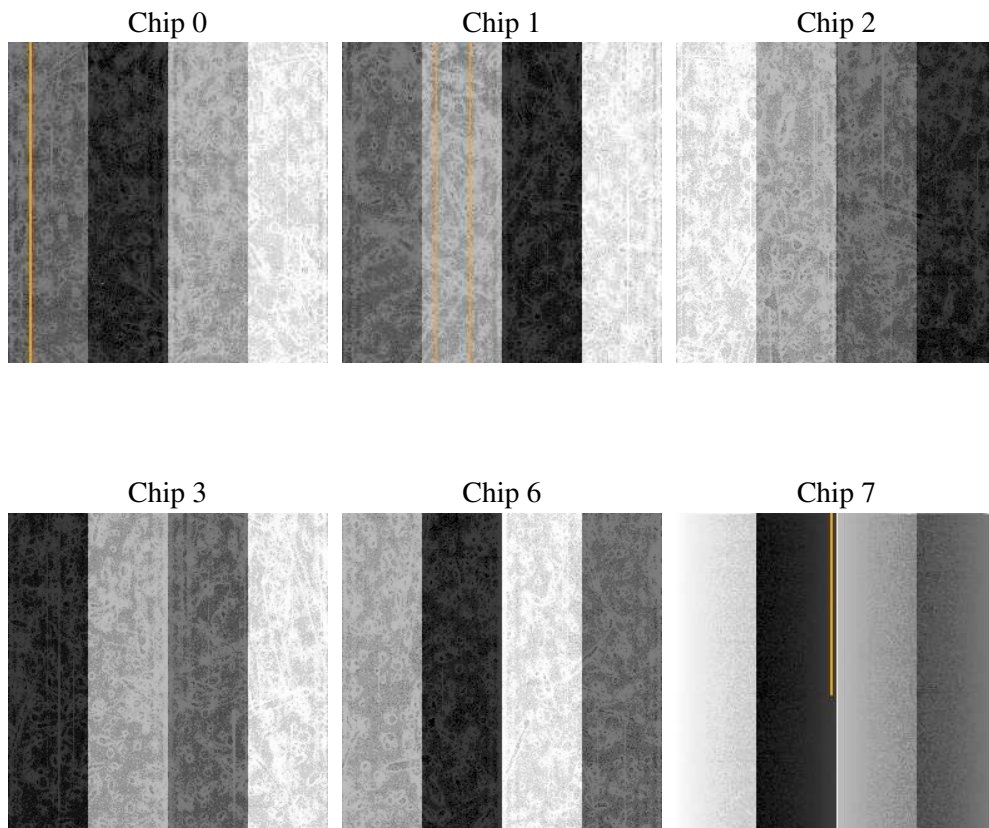
2 OBI

2.1 OBI

2.1.1 Images



2.1.2 Bias



2.1.3 Parameters

obi_num	0
ascdsver	7.6.7.2
caldbver	3.2.1
date	2006-05-01T23:27:25
revision	2

sched_exp_time	0.0
ontime	8280.7702763677
ontime0	6109.3170976043
ontime1	6365.3537711203
ontime2	6034.7750588655
ontime3	6138.4859386981
ontime6	6533.8852824271
ontime7	8280.7702763677
l1events	1499808

2.1.4 Events

	ccd 0	ccd 1	ccd 2	ccd 3	ccd 6	ccd 7
level 1 events	225753	235664	227014	232005	254925	324447
rejected events	43892	44906	44228	46050	49912	61874
rejected %	19%	19%	19%	19%	19%	19%

	ccd 0	ccd 1	ccd 2	ccd 3	ccd 6	ccd 7
grade 0 events	99891	104695	102349	104269	111328	45204
	44%	44%	45%	44%	43%	13%
grade 1 events	630	556	653	663	588	155
	0%	0%	0%	0%	0%	0%
grade 2 events	31829	33865	30862	31522	35551	79247
	14%	14%	13%	13%	13%	24%
grade 3 events	11803	12102	12000	12222	12779	18774
	5%	5%	5%	5%	5%	5%
grade 4 events	11816	12038	12007	12298	12729	18583
	5%	5%	5%	5%	4%	5%
grade 5 events	2830	2889	2656	2940	3169	7425
	1%	1%	1%	1%	1%	2%
grade 6 events	26522	28058	25568	25644	32626	100765
	11%	11%	11%	11%	12%	31%
grade 7 events	40432	41461	40919	42447	46155	54294
	17%	17%	18%	18%	18%	16%

2.2 Compared Parameters

Parameter	Planned	Actual	Parameter	Planned	Actual
Instrument	ACIS	ACIS	Obspar format version number	6	6
Detector	ACIS-012367	ACIS-012367	Obspar file type	PREDICTED	ACTUAL
Grating	NONE	NONE	Obspar update status	NONE	UPDATED
Data mode	FAINT	FAINT	On-chip summing requested	N	N
Observation mode	SECONDARY	SECONDARY	Subarray requested	NONE	NONE
Pointing RA	0	302.9905913961481	Alternating exposures requested	N	N
Pointing Dec	0	-44.27061698129623	Primary exposure time	0.000000	3.2
Pointing Roll	0.0	70.58733682697972			
SIM focus pos (mm)	-0.782348	-0.6828225247311905			
SIM defocus (mm)	0	0.8505141146731063			
SIM translation stage pos (mm)	-233.592463	250.466033080201			
SIM translation stage offset (mm)	0	-0.01005468664627074			
Observation start time	203591462.512867	203591461.48786			
Observation start date	2004-06-14T09:11:03	2004-06-14T09:11:01			
Observation end time	203613910.013862	203613908.98885			
Observation end date	2004-06-14T15:25:10	2004-06-14T15:25:08			
Read mode	TIMED	TIMED			

2.3 Aspect

2.4 Star Slots

2.5 FID Slots

A Summary

A.1 Status

V&V Scientist	Jen Lauer
V&V Date (YYYY-MM-DD)	2006.05.02
V&V Edition	1
V&V Disposition and Status	OK
V&V Charge Time	8.27839996

A.2 Comments