

V&V Reference Report

L2 ASCDS Version : 7.6.7.2

Observation 60168 - L2 Version 001
Chandra X-Ray Center

L2 Processing Date : May 23 2006

Contents

1	Front	2
2	OBI	3
2.1	OBI	3
2.1.1	Images	3
2.1.2	Bias	3
2.1.3	Parameters	4
2.1.4	Events	4
2.2	Compared Parameters	5
2.3	Aspect	6
2.4	Star Slots	8
2.5	FID Slots	8
A	Summary	9
A.1	Status	9
A.2	Comments	9

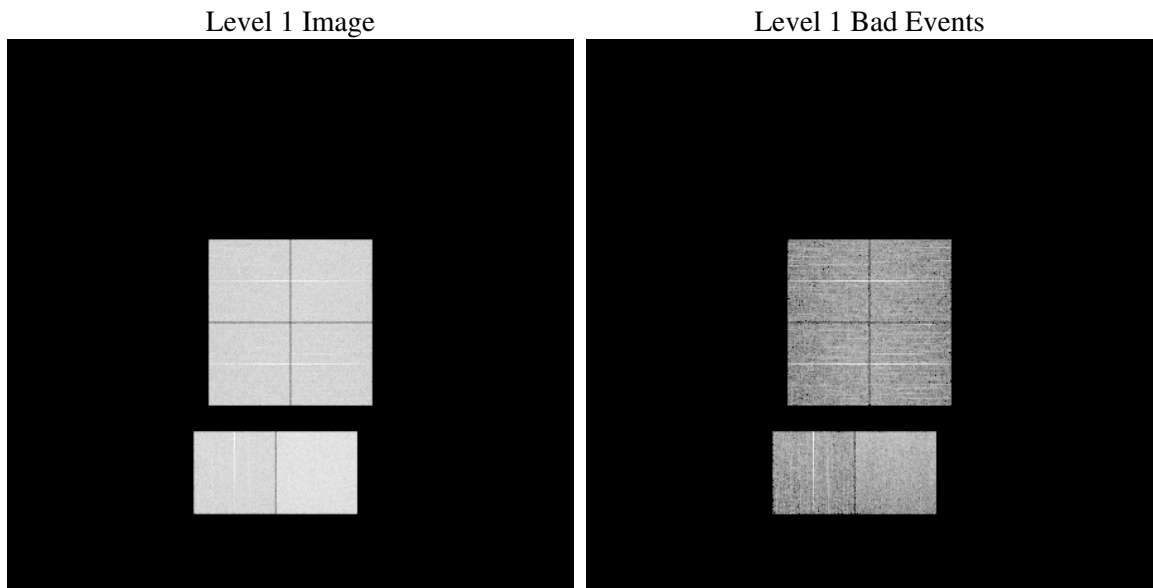
1 Front

seq_num	
obs_id	60168
title	ACIS-012367 diagnostics
observer	CHANDRA engineering request/realtime commanding
object	
dtcycle	0
cycle	P
ra_targ	0.0
dec_targ	0.0
ra_nom	274.47303020392
dec_nom	-19.993449421288
roll_nom	140.66353858258
revision	2
ontime	8277.6072311699
livetime	8172.7911842322
ontime0	6167.7759064734
ontime1	6423.8542268872
ontime2	6070.6288186312
ontime3	6093.1508519351
ontime6	6576.261552006
ontime7	8277.6072311699
l2events	1151774

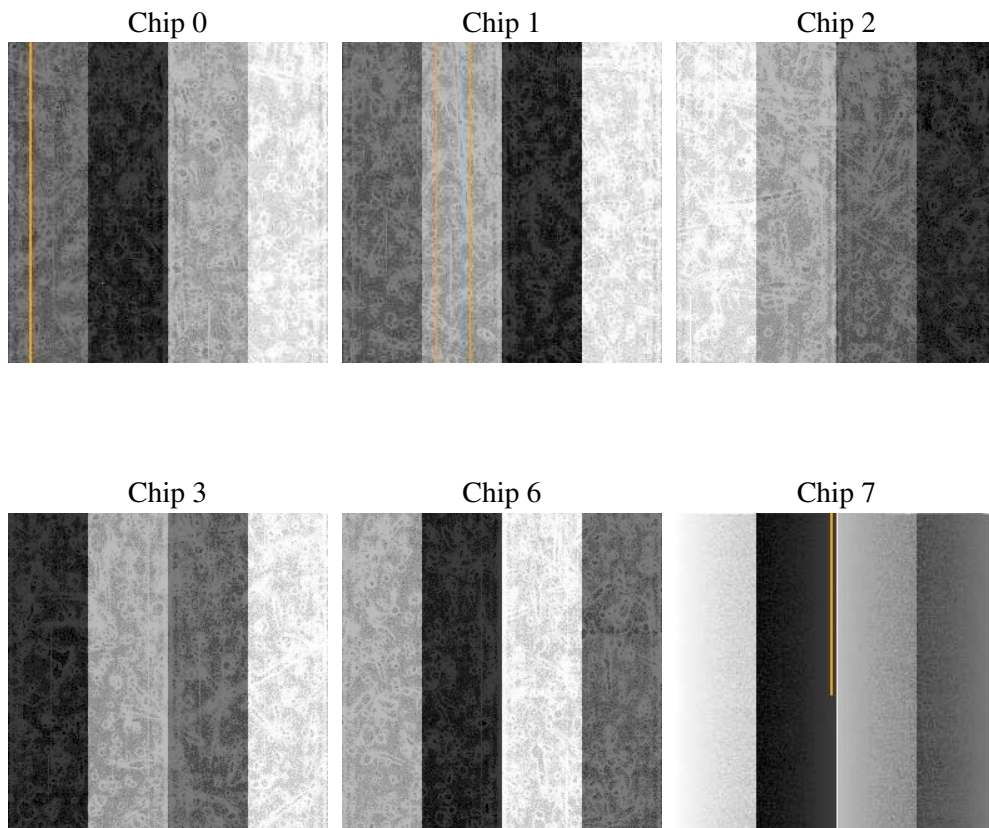
2 OBI

2.1 OBI

2.1.1 Images



2.1.2 Bias



2.1.3 Parameters

obi_num	0
ascdsver	7.6.7.2
caldbver	3.2.2
date	2006-05-24T02:23:09
revision	2

sched_exp_time	0.0
ontime	8280.765706569
ontime0	6170.8933418691
ontime1	6426.9306222796
ontime2	6073.6641740203
ontime3	6096.3503673375
ontime6	6579.2558674216
ontime7	8280.765706569
l1events	1500428

2.1.4 Events

	ccd 0	ccd 1	ccd 2	ccd 3	ccd 6	ccd 7
level 1 events	227465	236826	227612	232002	254222	322301
rejected events	44338	45063	44575	47752	47867	61939
rejected %	19%	19%	19%	20%	18%	19%

	ccd 0	ccd 1	ccd 2	ccd 3	ccd 6	ccd 7
grade 0 events	100813	104927	102522	103182	112206	44711
	44%	44%	45%	44%	44%	13%
grade 1 events	603	535	697	702	577	138
	0%	0%	0%	0%	0%	0%
grade 2 events	32138	34223	30738	31673	35764	79183
	14%	14%	13%	13%	14%	24%
grade 3 events	11663	12268	12114	12087	12721	18661
	5%	5%	5%	5%	5%	5%
grade 4 events	11967	12207	12004	12050	12898	18440
	5%	5%	5%	5%	5%	5%
grade 5 events	2725	2930	2674	3084	3220	7408
	1%	1%	1%	1%	1%	2%
grade 6 events	26635	28224	25765	25365	32873	99463
	11%	11%	11%	10%	12%	30%
grade 7 events	40921	41512	41098	43859	43963	54297
	17%	17%	18%	18%	17%	16%

2.2 Compared Parameters

Parameter	Planned	Actual	Parameter	Planned	Actual
Instrument	ACIS	ACIS	Obspar format version number	6	6
Detector	ACIS-012367	ACIS-012367	Obspar file type	PREDICTED	ACTUAL
Grating	NONE	NONE	Obspar update status	NONE	UPDATED
Data mode	FAINT	FAINT	On-chip summing requested	N	N
Observation mode	SECONDARY	SECONDARY	Subarray requested	NONE	NONE
Pointing RA	0	274.473030203923	Alternating exposures requested	N	N
Pointing Dec	0	-19.99344942128796	Primary exposure time	3.2	3.2
Pointing Roll	0.0	140.6635385825815			
SIM focus pos (mm)	-0.782348	-0.6828225247311905			
SIM defocus (mm)	0	0.8505141146731063			
SIM translation stage pos (mm)	-233.592463	250.466033080201			
SIM translation stage offset (mm)	0	-0.01005468664627074			
Observation start time	204288269.843708	204288268.81871			
Observation start date	2004-06-22T10:44:30	2004-06-22T10:44:28			
Observation end time	204299827.74422	204299826.71922			
Observation end date	2004-06-22T13:57:08	2004-06-22T13:57:06			
Read mode	TIMED	TIMED			

2.3 Aspect

2.4 Star Slots

2.5 FID Slots

A Summary

A.1 Status

V&V Scientist	Jen Lauer
V&V Date (YYYY-MM-DD)	2006.05.24
V&V Edition	1
V&V Disposition and Status	OK
V&V Charge Time	8.27760723

A.2 Comments