

V&V Reference Report

L2 ASCDS Version : 7.6.7.2

Observation 60166 - L2 Version 001
Chandra X-Ray Center

L2 Processing Date : May 23 2006

Contents

| | | |
|----------|-------------------------------|----------|
| 1 | Front | 2 |
| 2 | OBI | 3 |
| 2.1 | OBI | 3 |
| 2.1.1 | Images | 3 |
| 2.1.2 | Bias | 3 |
| 2.1.3 | Parameters | 4 |
| 2.1.4 | Events | 4 |
| 2.2 | Compared Parameters | 5 |
| 2.3 | Aspect | 6 |
| 2.4 | Star Slots | 8 |
| 2.5 | FID Slots | 8 |
| A | Summary | 9 |
| A.1 | Status | 9 |
| A.2 | Comments | 9 |

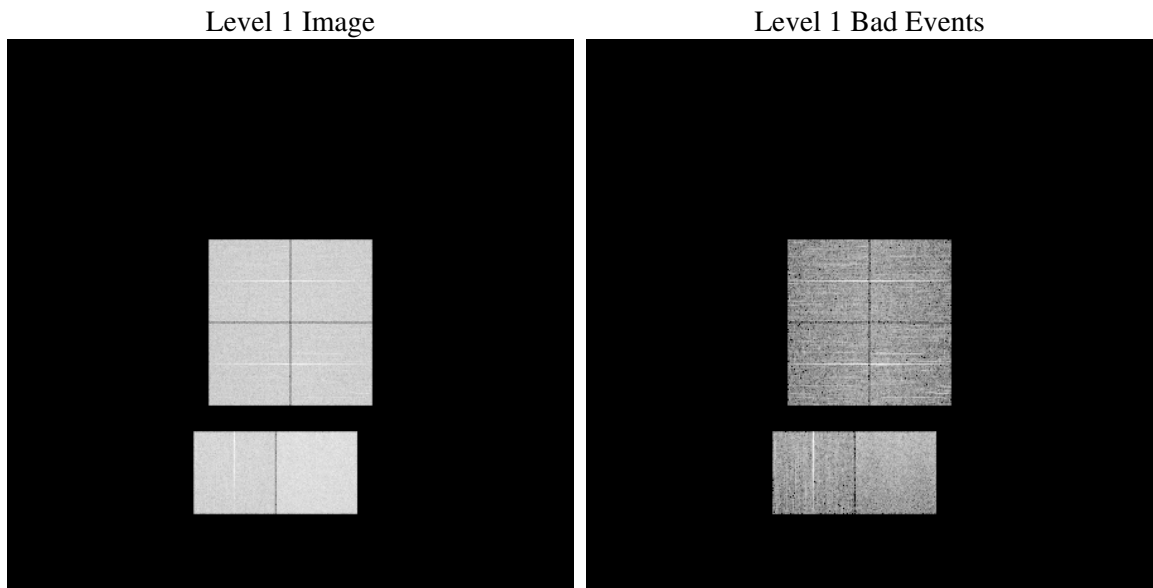
1 Front

| | |
|----------|---|
| seq_num | |
| obs_id | 60166 |
| title | ACIS-012367 diagnostics |
| observer | CHANDRA engineering request/realtime commanding |
| object | |
| dtcycle | 0 |
| cycle | P |
| ra_targ | 0.0 |
| dec_targ | 0.0 |
| ra_nom | 312.96635783988 |
| dec_nom | 4.0102012812293 |
| roll_nom | 127.46862007943 |
| revision | 2 |
| ontime | 6872.7877422571 |
| livetime | 6785.7603655687 |
| ontime0 | 5206.9721171558 |
| ontime1 | 5375.5437297225 |
| ontime2 | 5019.0779710412 |
| ontime3 | 5180.9619350135 |
| ontime6 | 5492.3002714217 |
| ontime7 | 6872.7877422571 |
| l2events | 963716 |

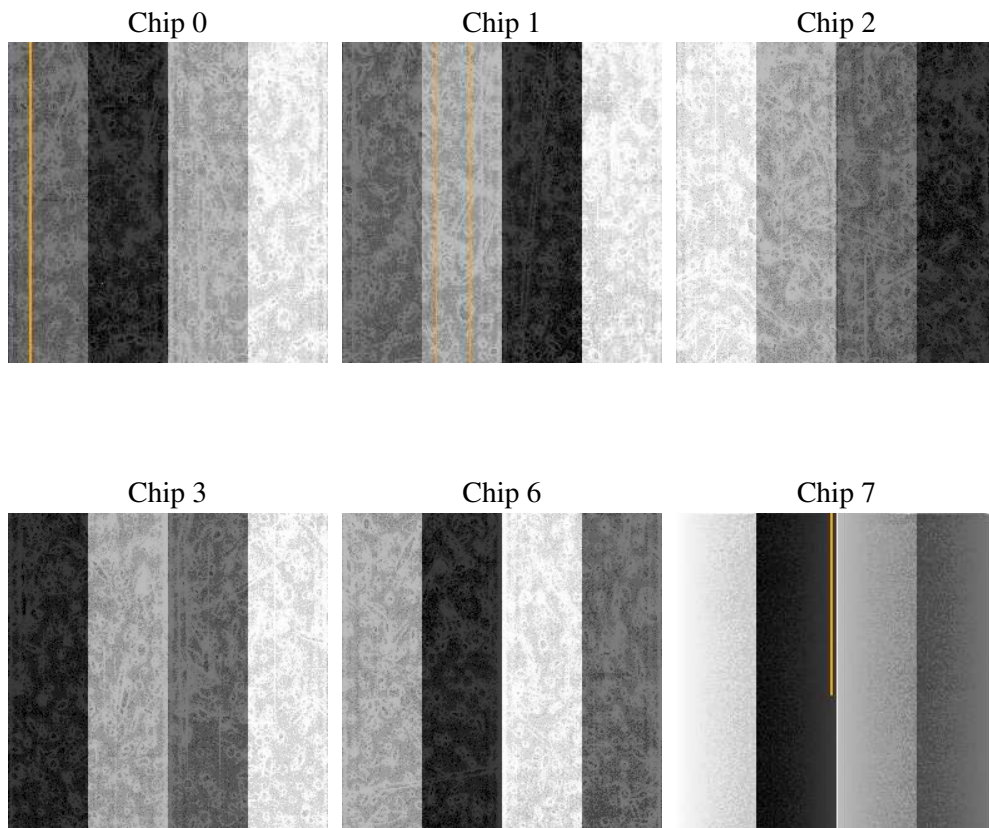
2 OBI

2.1 OBI

2.1.1 Images



2.1.2 Bias



2.1.3 Parameters

| | |
|----------|---------------------|
| obi_num | 0 |
| ascdsver | 7.6.7.2 |
| caldsver | 3.2.2 |
| date | 2006-05-24T02:47:13 |
| revision | 2 |

| | |
|----------------|-----------------|
| sched_exp_time | 0.0 |
| ontime | 6874.1640742719 |
| ontime0 | 5208.3074091673 |
| ontime1 | 5376.8379817307 |
| ontime2 | 5020.3311830461 |
| ontime3 | 5182.3793070316 |
| ontime6 | 5493.5124434531 |
| ontime7 | 6874.1640742719 |
| l1events | 1249194 |

2.1.4 Events

| | ccd 0 | ccd 1 | ccd 2 | ccd 3 | ccd 6 | ccd 7 |
|-----------------|--------|--------|--------|--------|--------|--------|
| level 1 events | 191134 | 195550 | 185467 | 195347 | 214378 | 267318 |
| rejected events | 36310 | 35942 | 34904 | 38800 | 42097 | 50053 |
| rejected % | 18% | 18% | 18% | 19% | 19% | 18% |

| | ccd 0 | ccd 1 | ccd 2 | ccd 3 | ccd 6 | ccd 7 |
|----------------|-------|-------|-------|-------|-------|-------|
| grade 0 events | 85248 | 87591 | 84179 | 87512 | 93159 | 38191 |
| | 44% | 44% | 45% | 44% | 43% | 14% |
| grade 1 events | 493 | 422 | 571 | 575 | 477 | 110 |
| | 0% | 0% | 0% | 0% | 0% | 0% |
| grade 2 events | 26969 | 28147 | 25528 | 26683 | 29898 | 65149 |
| | 14% | 14% | 13% | 13% | 13% | 24% |
| grade 3 events | 10031 | 10200 | 9789 | 10176 | 10876 | 15770 |
| | 5% | 5% | 5% | 5% | 5% | 5% |
| grade 4 events | 10112 | 10188 | 9759 | 10471 | 10754 | 15513 |
| | 5% | 5% | 5% | 5% | 5% | 5% |
| grade 5 events | 2264 | 2384 | 2227 | 2514 | 2588 | 6035 |
| | 1% | 1% | 1% | 1% | 1% | 2% |
| grade 6 events | 22464 | 23482 | 21308 | 21705 | 27594 | 82642 |
| | 11% | 12% | 11% | 11% | 12% | 30% |
| grade 7 events | 33553 | 33136 | 32106 | 35711 | 39032 | 43908 |
| | 17% | 16% | 17% | 18% | 18% | 16% |

2.2 Compared Parameters

| Parameter | Planned | Actual | Parameter | Planned | Actual |
|-----------------------------------|---------------------|----------------------|---------------------------------|-----------|---------|
| Instrument | ACIS | ACIS | Obspar format version number | 6 | 6 |
| Detector | ACIS-012367 | ACIS-012367 | Obspar file type | PREDICTED | ACTUAL |
| Grating | NONE | NONE | Obspar update status | NONE | UPDATED |
| Data mode | FAINT | FAINT | On-chip summing requested | N | N |
| Observation mode | SECONDARY | SECONDARY | Subarray requested | NONE | NONE |
| Pointing RA | 0 | 312.9663578398769 | Alternating exposures requested | N | N |
| Pointing Dec | 0 | 4.01020128122925 | Primary exposure time | 3.2 | 3.2 |
| Pointing Roll | 0.0 | 127.468620079431 | | | |
| SIM focus pos (mm) | -0.782348 | -0.6828225247311905 | | | |
| SIM defocus (mm) | 0 | 0.8505141146731063 | | | |
| SIM translation stage pos (mm) | -233.592463 | 250.466033080201 | | | |
| SIM translation stage offset (mm) | 0 | -0.01005468664627074 | | | |
| Observation start time | 204468899.451709 | 204468898.42671 | | | |
| Observation start date | 2004-06-24T12:54:59 | 2004-06-24T12:54:58 | | | |
| Observation end time | 204513023.653663 | 204513022.62866 | | | |
| Observation end date | 2004-06-25T01:10:24 | 2004-06-25T01:10:22 | | | |
| Read mode | TIMED | TIMED | | | |

2.3 Aspect

2.4 Star Slots

2.5 FID Slots

A Summary

A.1 Status

| | |
|----------------------------|------------|
| V&V Scientist | Jen Lauer |
| V&V Date (YYYY-MM-DD) | 2006.05.24 |
| V&V Edition | 1 |
| V&V Disposition and Status | OK |
| V&V Charge Time | 6.87278774 |

A.2 Comments