

V&V Reference Report

L2 ASCDS Version : 7.6.7.2

Observation 60160 - L2 Version 001
Chandra X-Ray Center

L2 Processing Date : May 24 2006

Contents

1	Front	2
2	OBI	3
2.1	OBI	3
2.1.1	Images	3
2.1.2	Bias	3
2.1.3	Parameters	4
2.1.4	Events	4
2.2	Compared Parameters	5
2.3	Aspect	6
2.4	Star Slots	8
2.5	FID Slots	8
A	Summary	9
A.1	Status	9
A.2	Comments	9

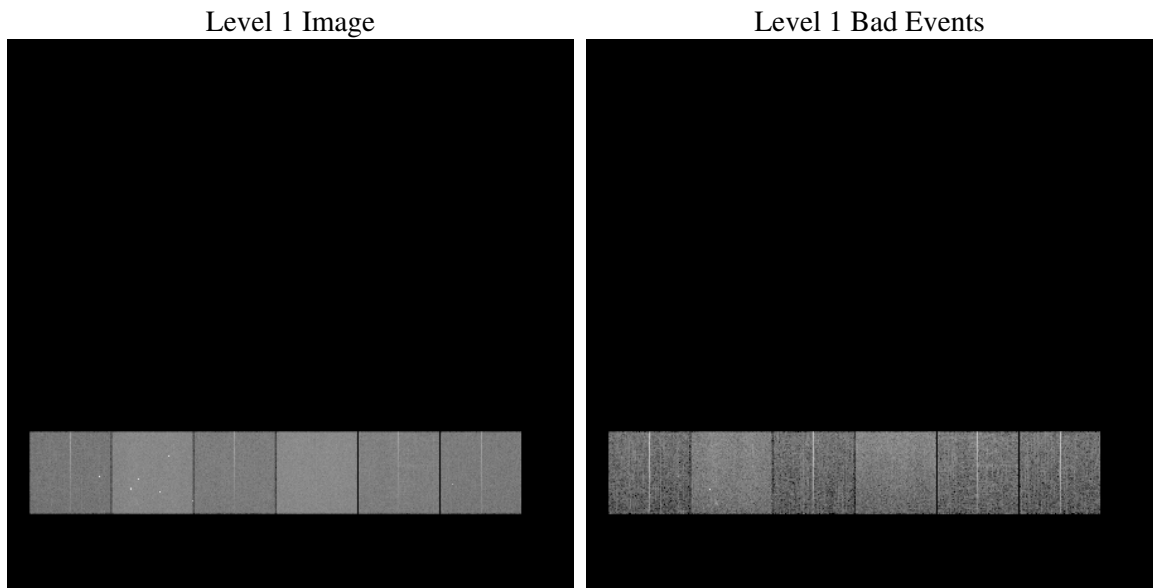
1 Front

seq_num	
obs_id	60160
title	ACIS-456789 diagnostics
observer	CHANDRA engineering request/realtime commanding
object	
dtcycle	0
cycle	P
ra_targ	0.0
dec_targ	0.0
ra_nom	264.00006436656
dec_nom	-18.226040794103
roll_nom	248.64735274306
revision	2
ontime	8277.2467833161
livetime	8172.4353005861
ontime4	5175.7614121437
ontime5	8277.2878233194
ontime6	5804.4712518454
ontime7	8277.2467833161
ontime8	6031.421092391
ontime9	5652.0222420692
l2events	1115715

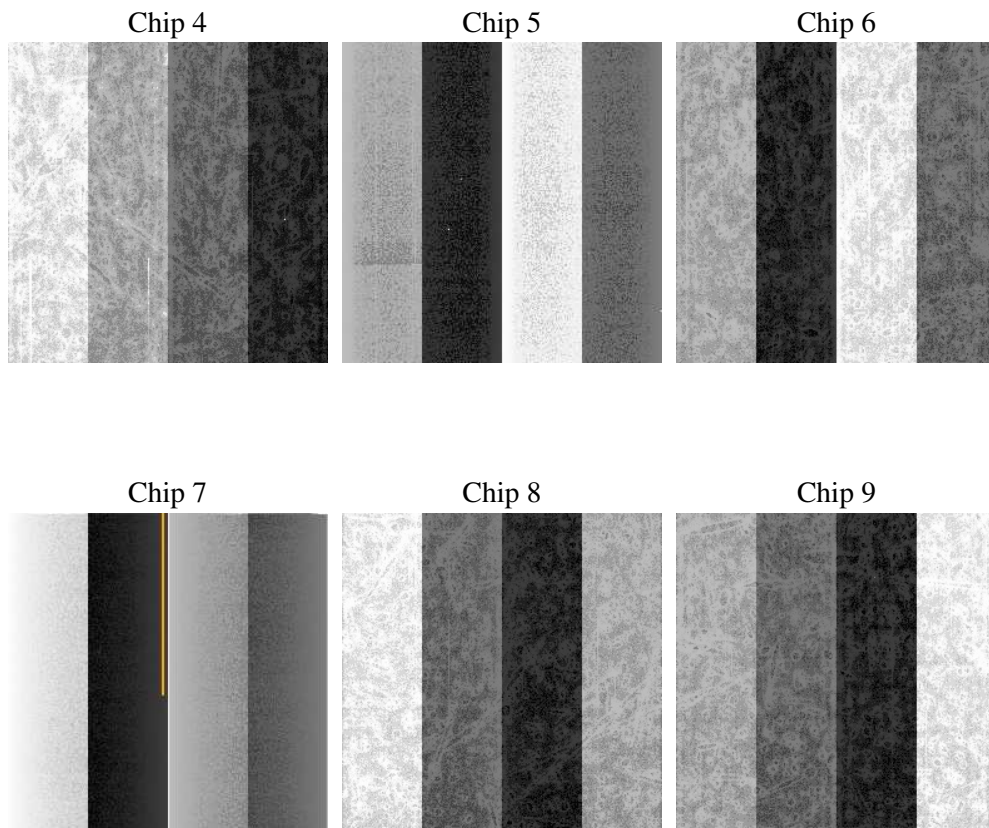
2 OBI

2.1 OBI

2.1.1 Images



2.1.2 Bias



2.1.3 Parameters

obi_num	1
ascdsver	7.6.7.2
caldsver	3.2.2
date	2006-05-24T03:40:09
revision	2

sched_exp_time	0.0
ontime	8277.5153667033
ontime4	5175.9068755209
ontime5	8277.5153667033
ontime6	5804.6577552259
ontime7	8277.5153667033
ontime8	6031.5255157948
ontime9	5652.3318654597
l1events	1497677

2.1.4 Events

	ccd 4	ccd 5	ccd 6	ccd 7	ccd 8	ccd 9
level 1 events	192690	305324	224551	319206	242327	213579
rejected events	43215	67557	44393	62478	50878	44697
rejected %	22%	22%	19%	19%	20%	20%

	ccd 4	ccd 5	ccd 6	ccd 7	ccd 8	ccd 9
grade 0 events	88177	27065	97143	42148	104621	93490
	45%	8%	43%	13%	43%	43%
grade 1 events	692	142	465	111	524	572
	0%	0%	0%	0%	0%	0%
grade 2 events	22614	110801	31616	80139	33291	28378
	11%	36%	14%	25%	13%	13%
grade 3 events	9931	7058	11075	17568	12328	10652
	5%	2%	4%	5%	5%	4%
grade 4 events	9882	6712	11082	16961	12541	10902
	5%	2%	4%	5%	5%	5%
grade 5 events	2484	6309	2817	7316	3500	3035
	1%	2%	1%	2%	1%	1%
grade 6 events	18871	86131	29242	99912	28668	25460
	9%	28%	13%	31%	11%	11%
grade 7 events	40039	61106	41111	55051	46854	41090
	20%	20%	18%	17%	19%	19%

2.2 Compared Parameters

Parameter	Planned	Actual	Parameter	Planned	Actual
Instrument	ACIS	ACIS	Obspar format version number	6	6
Detector	ACIS-456789	ACIS-456789	Obspar file type	PREDICTED	ACTUAL
Grating	NONE	NONE	Obspar update status	NONE	UPDATED
Data mode	FAINT	FAINT	On-chip summing requested	N	N
Observation mode	SECONDARY	SECONDARY	Subarray requested	NONE	NONE
Pointing RA	0	264.0000643665577	Alternating exposures requested	N	N
Pointing Dec	0	-18.22604079410349	Primary exposure time	3.2	3.2
Pointing Roll	0.0	248.6473527430576			
SIM focus pos (mm)	-0.684267	-0.6828225247311905			
SIM defocus (mm)	0	0.8505141146731063			
SIM translation stage pos (mm)	-190.132523	250.466033080201			
SIM translation stage offset (mm)	0	-0.01005468664627074			
Observation start time	204966020.373724	204966019.34873			
Observation start date	2004-06-30T07:00:20	2004-06-30T07:00:19			
Observation end time	204985554.82459	204985553.7996			
Observation end date	2004-06-30T12:25:55	2004-06-30T12:25:53			
Read mode	TIMED	TIMED			

2.3 Aspect

2.4 Star Slots

2.5 FID Slots

A Summary

A.1 Status

V&V Scientist	Jen Lauer
V&V Date (YYYY-MM-DD)	2006.05.24
V&V Edition	1
V&V Disposition and Status	OK
V&V Charge Time	8.27724678

A.2 Comments

The ACIS focal plane temperature was above calibration limits for the entire observation.