

V&V Reference Report

L2 ASCDS Version : 8.4.5

Observation 60157 - L2 Version 3
Chandra X-Ray Center

L2 Processing Date : Dec 3 2012

Contents

1	Front	2
2	OBI	3
2.1	OBI	3
2.1.1	Images	3
2.1.2	Bias	3
2.1.3	Parameters	4
2.1.4	Events	4
2.2	Compared Parameters	5
2.3	Star Slots	6
2.4	FID Slots	6
A	Summary	7
A.1	Status	7
A.2	Comments	7

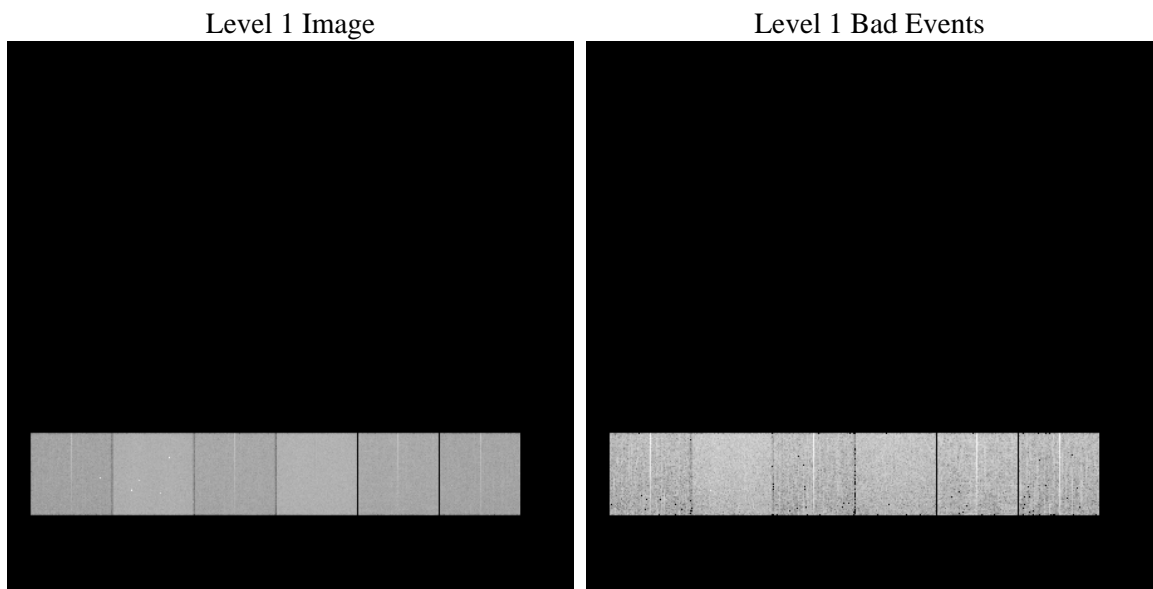
1 Front

seq_num	 	Sequence number
obs_id	60157	Observation id
title	ACIS-456789 diagnostics	Proposal title
observer	CHANDRA engineering request/realtime commanding	Principal investig
object	 	Source name
dtcycle	0	
cycle	P	events from which exps? Prim/Second/Both
ra_targ	0.0	Observer's specified target RA [deg]
dec_targ	0.0	Observer's specified target Dec [deg]
ra_nom	299.9713843009	Nominal RA [deg]
dec_nom	-4.9939017460672	Nominal Dec [deg]
roll_nom	137.4651531505	Nominal Roll [deg]
revision	3	Processing version of data
ontime	7798.3999709487	Sum of GTIs [s]
livetime	7699.6519348838	Livetime [s]
ontime4	4879.4759583175	Sum of GTIs [s]
ontime5	7798.3999709487	Sum of GTIs [s]
ontime6	5401.2327190638	Sum of GTIs [s]
ontime7	7798.3999709487	Sum of GTIs [s]
ontime8	5571.8489522338	Sum of GTIs [s]
ontime9	5151.5544379056	Sum of GTIs [s]
l2events	1074226	Number of level 2 events

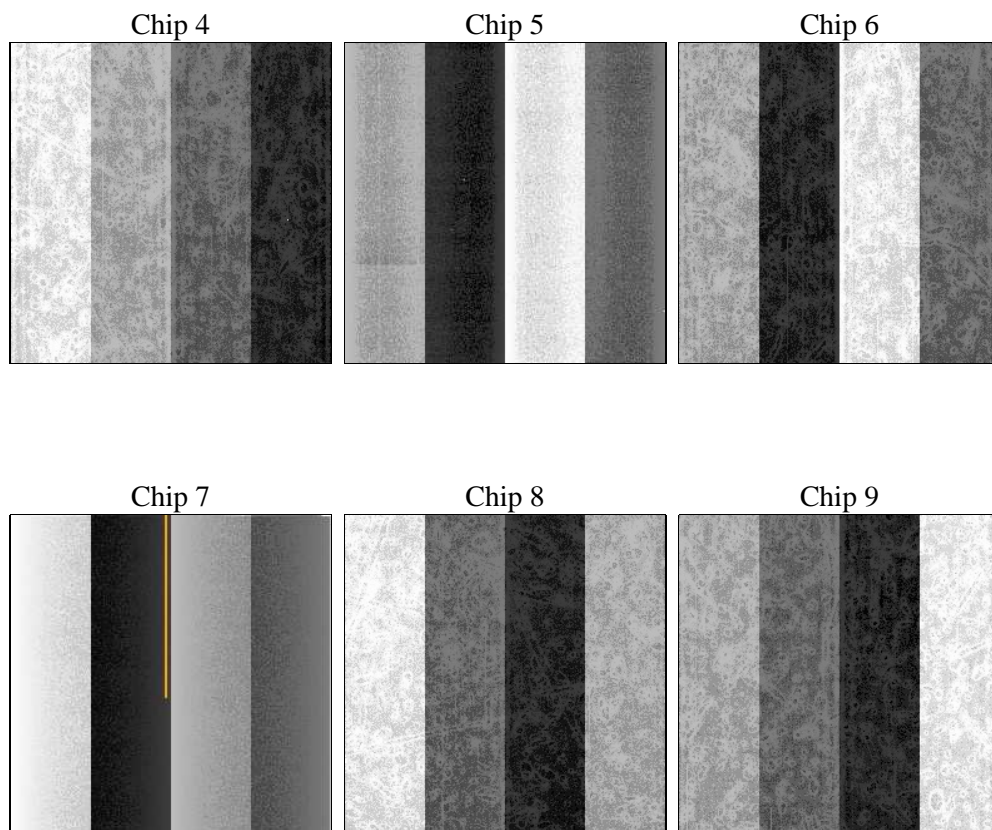
2 OBI

2.1 OBI

2.1.1 Images



2.1.2 Bias



2.1.3 Parameters

obi_num	1	Obi number	sched_exp_time	0.0	[s] Scheduled observation exposure time
ascdsver	8.4.5	Processing system revision	ontime	7798.3999709487	Sum of GTIs [s]
caldbver	4.5.2	 	ontime4	4879.4759583175	Sum of GTIs [s]
date	2012-12-03T20:05:40	Date and time of file creation	ontime5	7798.3999709487	Sum of GTIs [s]
revision	3	Processing version of data	ontime6	5401.2327190638	Sum of GTIs [s]
			ontime7	7798.3999709487	Sum of GTIs [s]
			ontime8	5571.8489522338	Sum of GTIs [s]
			ontime9	5151.5544379056	Sum of GTIs [s]
			l1events	1413800	Number of level 1 events

2.1.4 Events

	ccd 4	ccd 5	ccd 6	ccd 7	ccd 8	ccd 9		ccd 4	ccd 5	ccd 6	ccd 7	ccd 8	ccd 9
level 1 events	182755	287001	212886	306540	227397	197221	grade 0 events	82571	54199	92849	63295	97564	86094
rejected events	39867	54969	42257	48079	47736	40724		45%	18%	43%	20%	42%	43%
rejected %	21%	19%	19%	15%	20%	20%	grade 1 events	656	309	536	190	542	543
								0%	0%	0%	0%	0%	0%
							grade 2 events	22776	80665	29484	57033	31423	26788
								12%	28%	13%	18%	13%	13%
							grade 3 events	9525	14463	10685	25725	11934	10078
								5%	5%	5%	8%	5%	5%
							grade 4 events	9536	14234	10582	25865	11793	10139
								5%	4%	4%	8%	5%	5%
							grade 5 events	2367	8934	2679	8675	3299	2824
								1%	3%	1%	2%	1%	1%
							grade 6 events	18480	68471	27029	86656	26947	23510
								10%	23%	12%	28%	11%	11%
							grade 7 events	36844	45726	39042	39101	43895	37245
								20%	15%	18%	12%	19%	18%

2.2 Compared Parameters

Parameter	Planned	Actual	Parameter	Planned	Actual
Instrument	ACIS	ACIS	Obspar format version number	7	7
Detector	ACIS-456789	ACIS-456789	Obspar file type	PREDICTED	ACTUAL
Grating	NONE	NONE	Obspar update status	NONE	UPDATED
Data mode	FAINT	FAINT	On-chip summing requested	N	N
Observation mode	SECONDARY	SECONDARY	Subarray requested	NONE	NONE
[deg] Pointing RA	0	299.9713843008964	Alternating exposures requested	N	N
[deg] Pointing Dec	0	-4.993901746067228	[s] Primary exposure time	3.2	3.2
[deg] Pointing Roll	0.0	137.4651531504999			
[mm] SIM focus pos	-0.684267	-0.6828225247311905			
[mm] SIM defocus	0	0.8505141146731063			
[mm] SIM translation stage pos	-190.132523	250.4635187648994			
[mm] SIM translation stage offset	0	-0.007540371344731511			
[s] Observation start time (MET)	205153277.632032	205153276.60703			
Observation start date	2004-07-02T11:01:18	2004-07-02T11:01:16			
[s] Observation end time (MET)	205188701.633603	205188700.6086			
Observation end date	2004-07-02T20:51:42	2004-07-02T20:51:40			
Read mode	TIMED	TIMED			

2.3 Star Slots

2.4 FID Slots

A Summary

A.1 Status

V&V Scientist	Beth Sundheim
V&V Date (YYYY-MM-DD)	2012.12.26
V&V Edition	1
V&V Disposition and Status	OK
V&V Charge Time	7.7983999709487

A.2 Comments