

V&V Reference Report

L2 ASCDS Version : 7.6.7.2

Observation 60119 - L2 Version 001
Chandra X-Ray Center

L2 Processing Date : Apr 28 2006

Contents

1	Front	2
2	OBI	3
2.1	OBI	3
2.1.1	Images	3
2.1.2	Bias	3
2.1.3	Parameters	4
2.1.4	Events	4
2.2	Compared Parameters	5
2.3	Aspect	6
2.4	Star Slots	8
2.5	FID Slots	8
A	Summary	9
A.1	Status	9
A.2	Comments	9

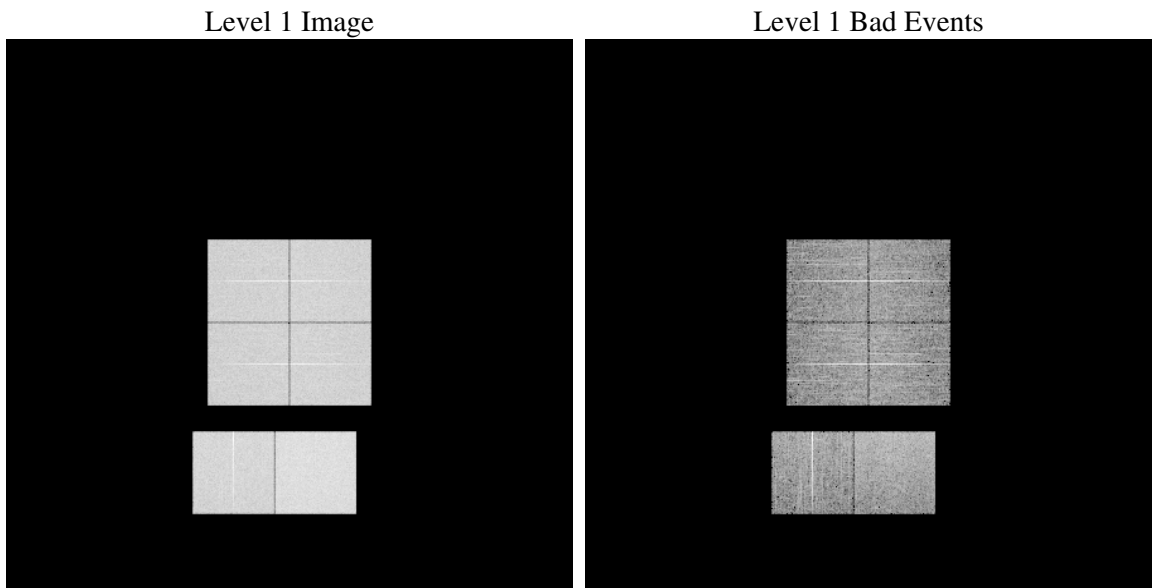
1 Front

seq_num	
obs_id	60119
title	ACIS-012367 diagnostics
observer	CHANDRA engineering request/realtime commanding
object	
dtcycle	0
cycle	P
ra_targ	0.0
dec_targ	0.0
ra_nom	327.97782609773
dec_nom	-17.978767690563
roll_nom	98.569123166261
revision	2
ontime	8277.9901597202
livetime	8173.1692639105
ontime0	6476.0494934916
ontime1	6686.7540888786
ontime2	6246.0219736695
ontime3	6450.0399699807
ontime6	6813.2341510057
ontime7	8277.9901597202
l2events	1165758

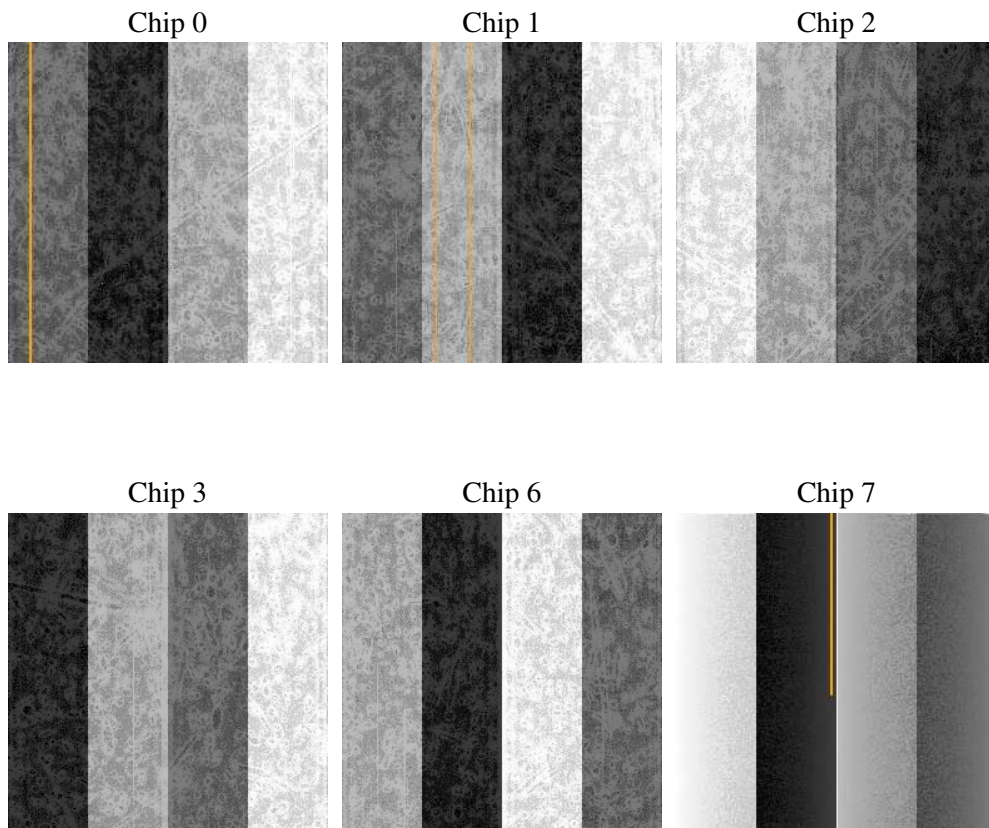
2 OBI

2.1 OBI

2.1.1 Images



2.1.2 Bias



2.1.3 Parameters

obi_num	0
ascdsver	7.6.7.2
caldbver	3.2.1
date	2006-04-28T11:04:35
revision	2

sched_exp_time	0.0
ontime	8280.7688477933
ontime0	6478.7871415615
ontime1	6689.4506969452
ontime2	6248.6775417328
ontime3	6452.8596980572
ontime6	6815.8486790955
ontime7	8280.7688477933
l1events	1499027

2.1.4 Events

	ccd 0	ccd 1	ccd 2	ccd 3	ccd 6	ccd 7
level 1 events	230059	237746	227968	234923	257091	311240
rejected events	40837	41731	43202	44311	47298	57718
rejected %	17%	17%	18%	18%	18%	18%

	ccd 0	ccd 1	ccd 2	ccd 3	ccd 6	ccd 7
grade 0 events	104543	107488	103542	107008	114408	43031
	45%	45%	45%	45%	44%	13%
grade 1 events	618	548	668	628	515	107
	0%	0%	0%	0%	0%	0%
grade 2 events	33348	35078	30910	32454	36289	77055
	14%	14%	13%	13%	14%	24%
grade 3 events	12165	12667	12269	12518	13043	18306
	5%	5%	5%	5%	5%	5%
grade 4 events	12121	12292	12188	12398	12998	17756
	5%	5%	5%	5%	5%	5%
grade 5 events	2818	2924	2552	2843	3112	6738
	1%	1%	1%	1%	1%	2%
grade 6 events	27141	28588	25968	26351	33169	97464
	11%	12%	11%	11%	12%	31%
grade 7 events	37305	38161	39871	40723	43557	50783
	16%	16%	17%	17%	16%	16%

2.2 Compared Parameters

Parameter	Planned	Actual	Parameter	Planned	Actual
Instrument	ACIS	ACIS	Obspar format version number	6	6
Detector	ACIS-012367	ACIS-012367	Obspar file type	PREDICTED	ACTUAL
Grating	NONE	NONE	Obspar update status	NONE	UPDATED
Data mode	FAINT	FAINT	On-chip summing requested	N	N
Observation mode	SECONDARY	SECONDARY	Subarray requested	NONE	NONE
Pointing RA	0	327.9778260977334	Alternating exposures requested	N	N
Pointing Dec	0	-17.9787676905628	Primary exposure time	3.2	3.2
Pointing Roll	0.0	98.56912316626062			
SIM focus pos (mm)	-0.782348	-0.6828225247311905			
SIM defocus (mm)	0	0.8505141146731063			
SIM translation stage pos (mm)	-233.592463	250.466033080201			
SIM translation stage offset (mm)	0	-0.01005468664627074			
Observation start time	207018066.364801	207018065.33979			
Observation start date	2004-07-24T01:01:06	2004-07-24T01:01:05			
Observation end time	207042071.865868	207042070.84086			
Observation end date	2004-07-24T07:41:12	2004-07-24T07:41:10			
Read mode	TIMED	TIMED			

2.3 Aspect

2.4 Star Slots

2.5 FID Slots

A Summary

A.1 Status

V&V Scientist	Jen Lauer
V&V Date (YYYY-MM-DD)	2006.04.28
V&V Edition	1
V&V Disposition and Status	OK
V&V Charge Time	8.27799015

A.2 Comments