

V&V Reference Report

L2 ASCDS Version : 8.5

Observation 60108 - L2 Version 3
Chandra X-Ray Center

L2 Processing Date : Dec 7 2012

Contents

1	Front	2
2	OBI	3
2.1	OBI	3
2.1.1	Images	3
2.1.2	Bias	3
2.1.3	Parameters	4
2.1.4	Events	4
2.2	Compared Parameters	5
2.3	Star Slots	6
2.4	FID Slots	6
A	Summary	7
A.1	Status	7
A.2	Comments	7

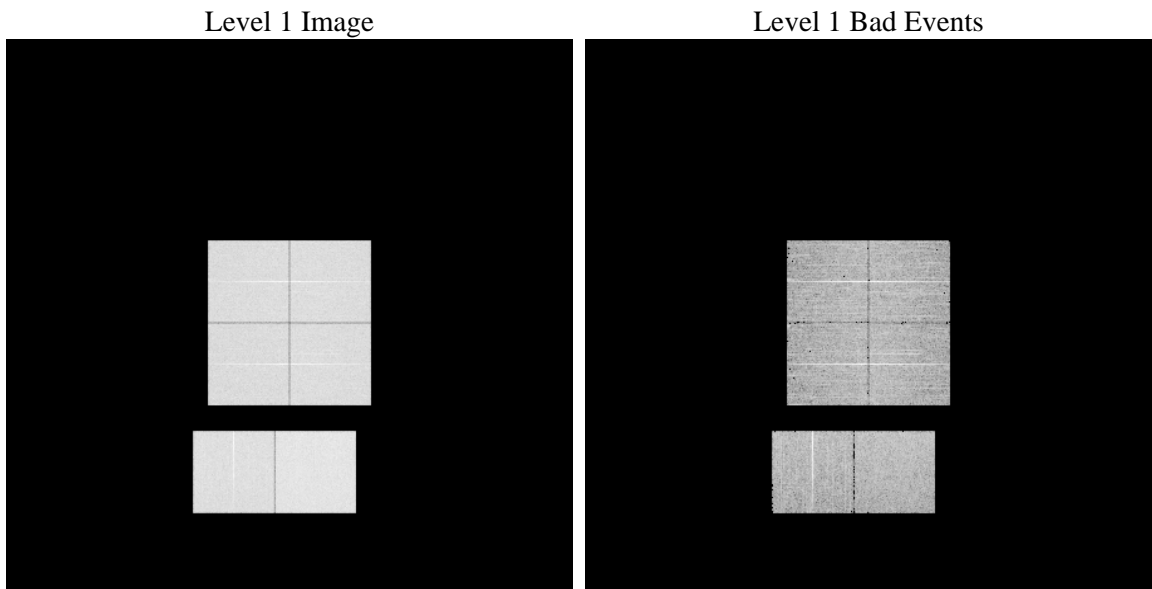
1 Front

seq_num	 	Sequence number
obs_id	60108	Observation id
title	ACIS-012367 diagnostics	Proposal title
observer	CHANDRA engineering request/realtime commanding	Principal investig
object	 	Source name
dtcycle	0	
cycle	P	events from which exps? Prim/Second/Both
ra_targ	0.0	Observer's specified target RA [deg]
dec_targ	0.0	Observer's specified target Dec [deg]
ra_nom	274.02399979539	Nominal RA [deg]
dec_nom	-32.020107644137	Nominal Dec [deg]
roll_nom	282.48382463827	Nominal Roll [deg]
revision	3	Processing version of data
ontime	8242.6065198779	Sum of GTIs [s]
livetime	8138.2336730214	Livetime [s]
ontime0	6566.9812726378	Sum of GTIs [s]
ontime1	6667.4101029038	Sum of GTIs [s]
ontime2	6268.7288288474	Sum of GTIs [s]
ontime3	6486.0382490158	Sum of GTIs [s]
ontime6	6971.9798888564	Sum of GTIs [s]
ontime7	8242.6065198779	Sum of GTIs [s]
l2events	1164664	Number of level 2 events

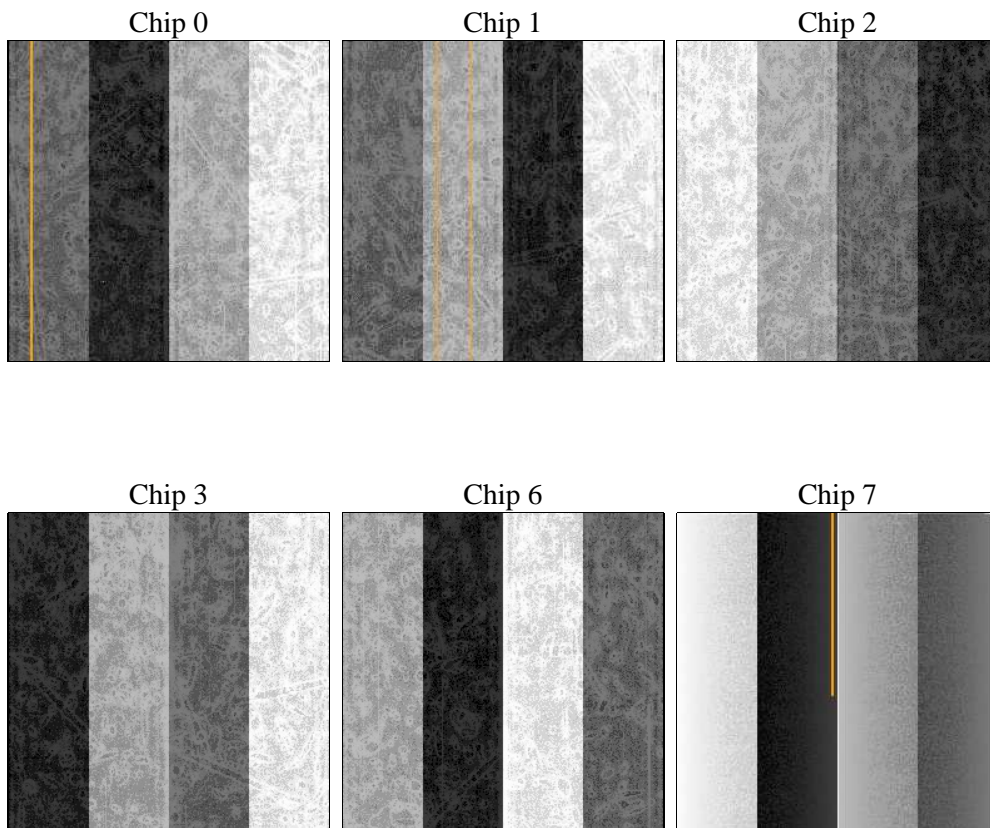
2 OBI

2.1 OBI

2.1.1 Images



2.1.2 Bias



2.1.3 Parameters

obi_num	5	Obi number	sched_exp_time	0.0	[s] Scheduled observation exposure time
ascdsver	8.5	Processing system revision	ontime	8242.6065198779	Sum of GTIs [s]
caldsver	4.5.4	 	ontime0	6566.9812726378	Sum of GTIs [s]
date	2012-12-07T04:26:12	Date and time of file creation	ontime1	6667.4101029038	Sum of GTIs [s]
revision	3	Processing version of data	ontime2	6268.7288288474	Sum of GTIs [s]
			ontime3	6486.0382490158	Sum of GTIs [s]
			ontime6	6971.9798888564	Sum of GTIs [s]
			ontime7	8242.6065198779	Sum of GTIs [s]
			l1events	1499179	Number of level 1 events

2.1.4 Events

	ccd 0	ccd 1	ccd 2	ccd 3	ccd 6	ccd 7		ccd 0	ccd 1	ccd 2	ccd 3	ccd 6	ccd 7
level 1 events	233350	237737	226906	236062	258066	307058	grade 0 events	105438	105962	103523	108371	114566	62128
rejected events	44427	45276	44334	46104	48377	48126		45%	44%	45%	45%	44%	20%
rejected %	19%	19%	19%	19%	18%	15%	grade 1 events	568	513	639	641	542	169
								0%	0%	0%	0%	0%	0%
							grade 2 events	32748	35022	30154	32002	36154	57433
								14%	14%	13%	13%	14%	18%
							grade 3 events	12181	12126	11812	12304	12986	25807
								5%	5%	5%	5%	5%	8%
							grade 4 events	12163	12113	12233	12301	13184	25573
								5%	5%	5%	5%	5%	8%
							grade 5 events	2784	2794	2655	2848	3194	8470
								1%	1%	1%	1%	1%	2%
							grade 6 events	27504	28371	25790	26006	33994	89297
								11%	11%	11%	11%	13%	29%
							grade 7 events	39964	40836	40100	41589	43446	38181
								17%	17%	17%	17%	16%	12%

2.2 Compared Parameters

Parameter	Planned	Actual	Parameter	Planned	Actual
Instrument	ACIS	ACIS	Obspar format version number	7	7
Detector	ACIS-012367	ACIS-012367	Obspar file type	PREDICTED	ACTUAL
Grating	NONE	NONE	Obspar update status	NONE	UPDATED
Data mode	FAINT	FAINT	On-chip summing requested	N	N
Observation mode	SECONDARY	SECONDARY	Subarray requested	NONE	NONE
[deg] Pointing RA	0	274.0239997953901	Alternating exposures requested	N	N
[deg] Pointing Dec	0	-32.02010764413728	[s] Primary exposure time	3.2	3.2
[deg] Pointing Roll	0.0	282.4838246382685			
[mm] SIM focus pos	-0.782348	-0.6828225247311905			
[mm] SIM defocus	0	0.8505141146731063			
[mm] SIM translation stage pos	-233.592463	250.466033080201			
[mm] SIM translation stage offset	0	-0.01005468664627074			
[s] Observation start time (MET)	207929592.75534	207929591.73032			
Observation start date	2004-08-03T14:13:13	2004-08-03T14:13:11			
[s] Observation end time (MET)	207951523.656317	207951522.6313			
Observation end date	2004-08-03T20:18:44	2004-08-03T20:18:42			
Read mode	TIMED	TIMED			

2.3 Star Slots

2.4 FID Slots

A Summary

A.1 Status

V&V Scientist	Beth Sundheim
V&V Date (YYYY-MM-DD)	2012.12.23
V&V Edition	1
V&V Disposition and Status	OK
V&V Charge Time	8.2426065198779

A.2 Comments