

V&V Reference Report

L2 ASCDS Version : 8.5

Observation 60085 - L2 Version 3
Chandra X-Ray Center

L2 Processing Date : Dec 7 2012

Contents

1	Front	2
2	OBI	3
2.1	OBI	3
2.1.1	Images	3
2.1.2	Bias	3
2.1.3	Parameters	4
2.1.4	Events	4
2.2	Compared Parameters	5
2.3	Star Slots	6
2.4	FID Slots	6
A	Summary	7
A.1	Status	7
A.2	Comments	7

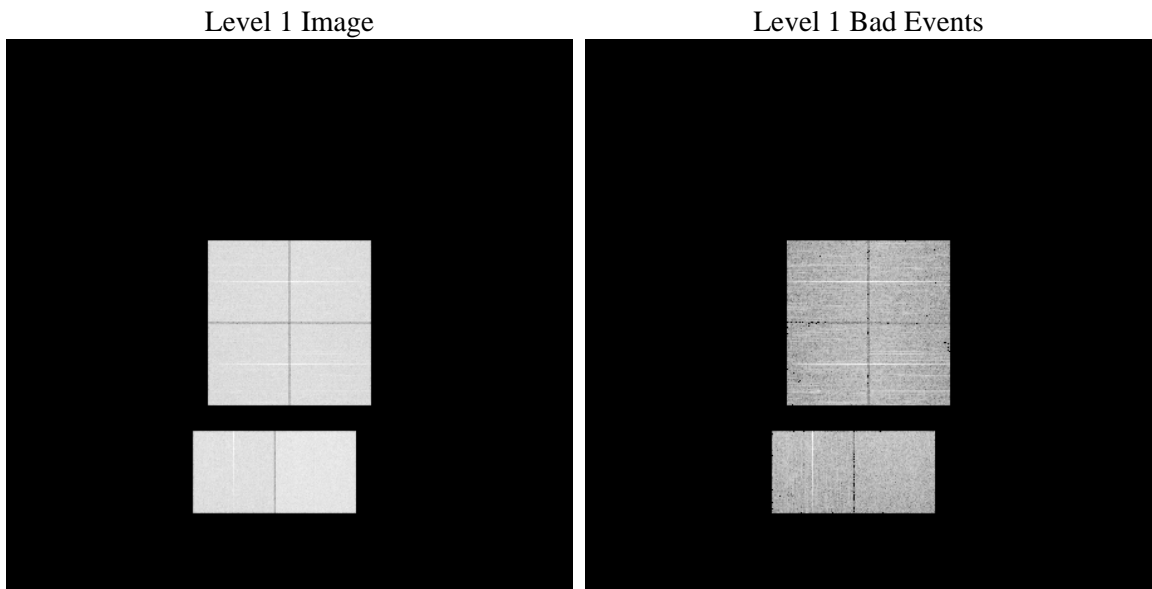
1 Front

seq_num	 	Sequence number
obs_id	60085	Observation id
title	ACIS-012367 diagnostics	Proposal title
observer	CHANDRA engineering request/realtime commanding	Principal investig
object	 	Source name
dtcycle	0	
cycle	P	events from which exps? Prim/Second/Both
ra_targ	0.0	Observer's specified target RA [deg]
dec_targ	0.0	Observer's specified target Dec [deg]
ra_nom	323.22277529161	Nominal RA [deg]
dec_nom	-14.418219926845	Nominal Dec [deg]
roll_nom	287.60203577248	Nominal Roll [deg]
revision	3	Processing version of data
ontime	8277.5229285061	Sum of GTIs [s]
livetime	8172.7079490595	Livetime [s]
ontime0	6449.6160468161	Sum of GTIs [s]
ontime1	6663.5201154649	Sum of GTIs [s]
ontime2	6154.6872530282	Sum of GTIs [s]
ontime3	6319.9773947597	Sum of GTIs [s]
ontime6	6837.7808766663	Sum of GTIs [s]
ontime7	8277.5229285061	Sum of GTIs [s]
l2events	1155434	Number of level 2 events

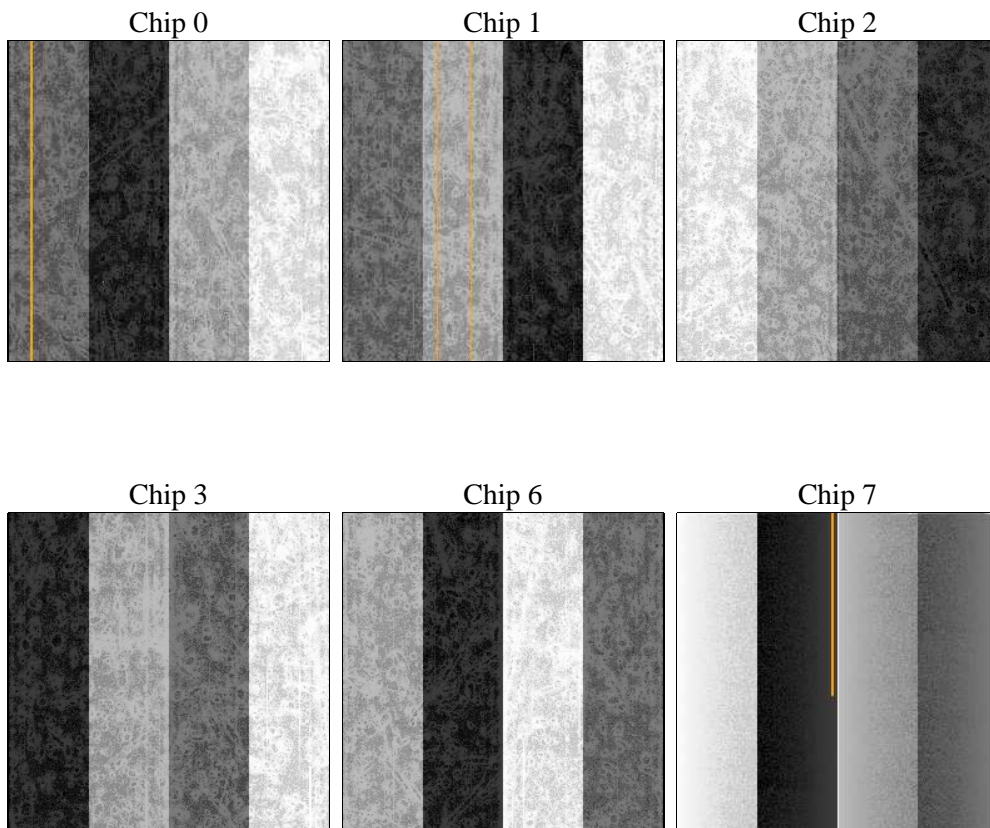
2 OBI

2.1 OBI

2.1.1 Images



2.1.2 Bias



2.1.3 Parameters

obi_num	1	Obi number	sched_exp_time	0.0	[s] Scheduled observation exposure time
ascdsver	8.5	Processing system revision	ontime	8277.5229285061	Sum of GTIs [s]
caldsver	4.5.4	 	ontime0	6449.6160468161	Sum of GTIs [s]
date	2012-12-07T21:49:16	Date and time of file creation	ontime1	6663.5201154649	Sum of GTIs [s]
revision	3	Processing version of data	ontime2	6154.6872530282	Sum of GTIs [s]
			ontime3	6319.9773947597	Sum of GTIs [s]
			ontime6	6837.7808766663	Sum of GTIs [s]
			ontime7	8277.5229285061	Sum of GTIs [s]
			l1events	1498262	Number of level 1 events

2.1.4 Events

	ccd 0	ccd 1	ccd 2	ccd 3	ccd 6	ccd 7		ccd 0	ccd 1	ccd 2	ccd 3	ccd 6	ccd 7
level 1 events	230568	238443	226065	232800	256875	313511	grade 0 events	102340	105233	100471	103122	112438	63564
rejected events	44975	45583	47080	48108	49714	49875		44%	44%	44%	44%	43%	20%
rejected %	19%	19%	20%	20%	19%	15%	grade 1 events	616	545	645	651	611	199
								0%	0%	0%	0%	0%	0%
							grade 2 events	32120	34598	30203	31812	35766	57642
								13%	14%	13%	13%	13%	18%
							grade 3 events	12033	12350	11664	12210	12962	26251
								5%	5%	5%	5%	5%	8%
							grade 4 events	12071	12381	11669	12213	13000	26218
								5%	5%	5%	5%	5%	8%
							grade 5 events	2733	2985	2736	2890	3287	8931
								1%	1%	1%	1%	1%	2%
							grade 6 events	27029	28298	24978	25335	32995	89961
								11%	11%	11%	10%	12%	28%
							grade 7 events	41626	42053	43699	44567	45816	40745
								18%	17%	19%	19%	17%	12%

2.2 Compared Parameters

Parameter	Planned	Actual
Instrument	ACIS	ACIS
Detector	ACIS-012367	ACIS-012367
Grating	NONE	NONE
Data mode	FAINT	FAINT
Observation mode	SECONDARY	SECONDARY
[deg] Pointing RA	0	323.2227752916125
[deg] Pointing Dec	0	-14.41821992684475
[deg] Pointing Roll	0.0	287.6020357724818
[mm] SIM focus pos	-0.782348	-0.6828225247311905
[mm] SIM defocus	0	0.8505141146731063
[mm] SIM translation stage pos	-233.592463	250.4635187648994
[mm] SIM translation stage offset	0	-0.007540371344731511
[s] Observation start time (MET)	209532153.676592	209532152.65161
Observation start date	2004-08-22T03:22:34	2004-08-22T03:22:32
[s] Observation end time (MET)	209554892.277604	209554891.25262
Observation end date	2004-08-22T09:41:32	2004-08-22T09:41:31
Read mode	TIMED	TIMED

Parameter	Planned	Actual
Obspar format version number	7	7
Obspar file type	PREDICTED	ACTUAL
Obspar update status	NONE	UPDATED
On-chip summing requested	N	N
Subarray requested	NONE	NONE
Alternating exposures requested	N	N
[s] Primary exposure time	3.2	3.2

2.3 Star Slots

2.4 FID Slots

A Summary

A.1 Status

V&V Scientist	Beth Sundheim
V&V Date (YYYY-MM-DD)	2012.12.26
V&V Edition	1
V&V Disposition and Status	OK
V&V Charge Time	8.2775229285061

A.2 Comments