

V&V Reference Report

L2 ASCDS Version : 7.6.7.1

Observation 60069 - L2 Version 001
Chandra X-Ray Center

L2 Processing Date : Apr 19 2006

Contents

1	Front	2
2	OBI	3
2.1	OBI	3
2.1.1	Images	3
2.1.2	Bias	3
2.1.3	Parameters	4
2.1.4	Events	4
2.2	Compared Parameters	5
2.3	Aspect	6
2.4	Star Slots	8
2.5	FID Slots	8
A	Summary	9
A.1	Status	9
A.2	Comments	9

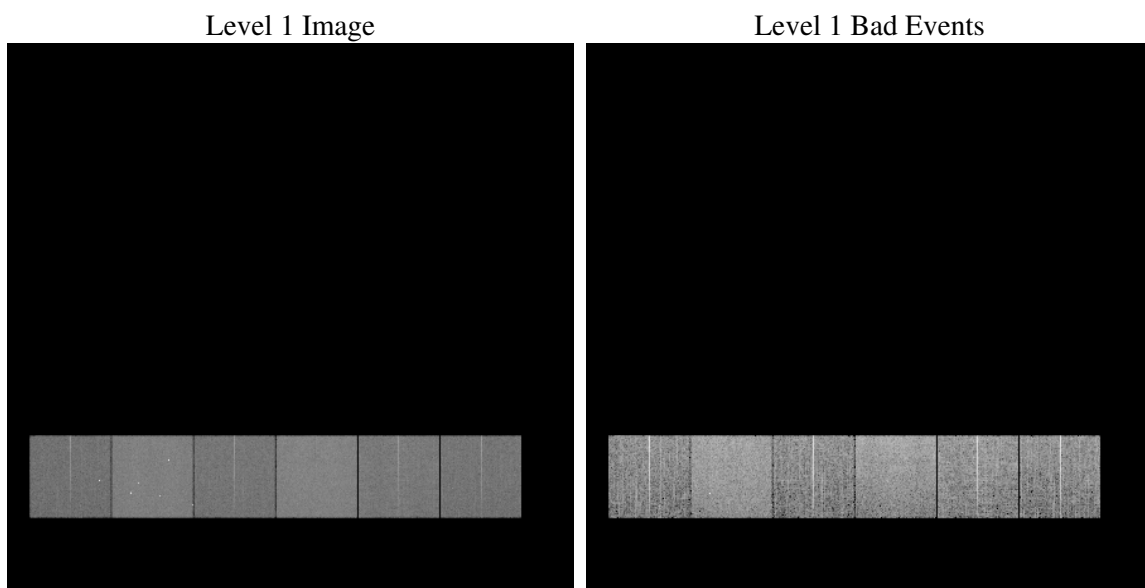
1 Front

seq_num	
obs_id	60069
title	ACIS-456789 diagnostics
observer	CHANDRA engineering request/realtime commanding
object	
dtcycle	0
cycle	P
ra_targ	0.0
dec_targ	0.0
ra_nom	322.00786248486
dec_nom	-8.0238123926825
roll_nom	270.809062038
revision	2
ontime	7794.3599508703
livetime	7695.6630719722
ontime4	5260.0335665643
ontime5	7794.4009908736
ontime6	5648.9102220237
ontime7	7794.3599508703
ontime8	5940.6818911433
ontime9	5600.1738696694
l2events	1046992

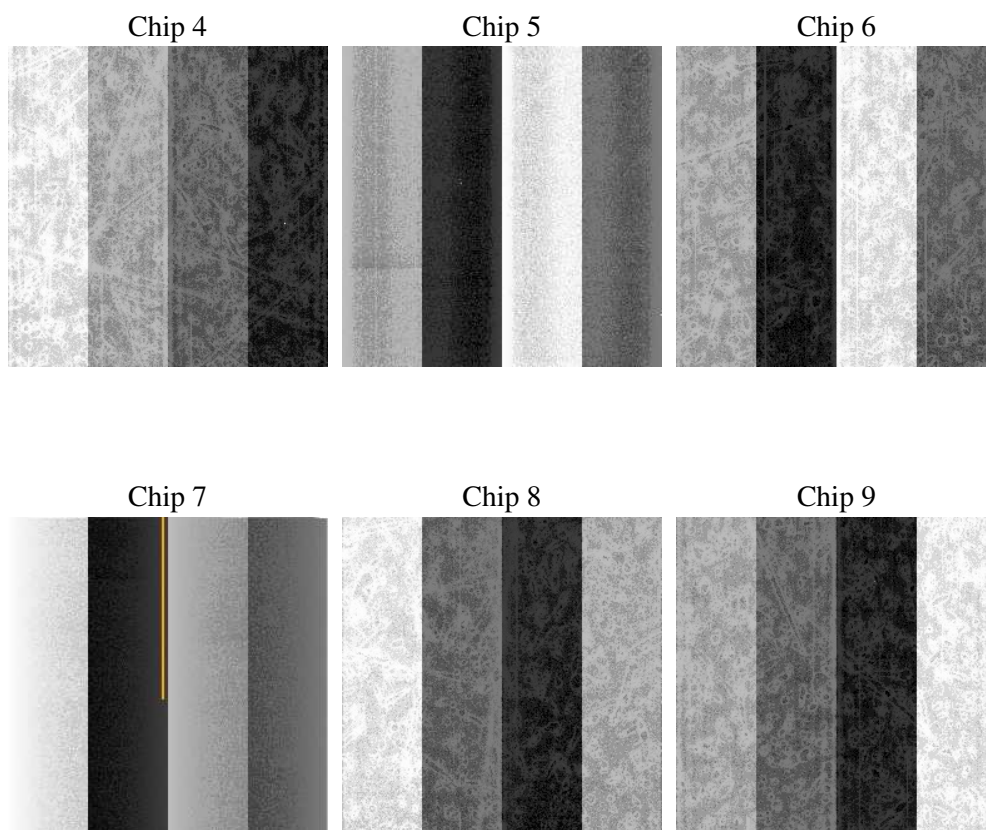
2 OBI

2.1 OBI

2.1.1 Images



2.1.2 Bias



2.1.3 Parameters

obi_num	0
ascdsver	7.6.7.1
caldsver	3.2.1
date	2006-04-19T18:54:24
revision	2

sched_exp_time	0.0
ontime	7794.6285570562
ontime4	5260.1790527403
ontime5	7794.6285570562
ontime6	5649.096748203
ontime7	7794.6285570562
ontime8	5940.7863373458
ontime9	5600.4835158587
l1events	1412035

2.1.4 Events

	ccd 4	ccd 5	ccd 6	ccd 7	ccd 8	ccd 9
level 1 events	188657	279103	211705	295436	231567	205567
rejected events	42643	61324	43199	57865	50156	44740
rejected %	22%	21%	20%	19%	21%	21%

	ccd 4	ccd 5	ccd 6	ccd 7	ccd 8	ccd 9
grade 0 events	85015	27891	91246	41514	98492	88203
	45%	9%	43%	14%	42%	42%
grade 1 events	660	342	508	108	531	537
	0%	0%	0%	0%	0%	0%
grade 2 events	23142	99834	29482	70954	31773	27834
	12%	35%	13%	24%	13%	13%
grade 3 events	9587	7131	10420	17243	11878	10362
	5%	2%	4%	5%	5%	5%
grade 4 events	9571	6874	10612	17534	11986	10530
	5%	2%	5%	5%	5%	5%
grade 5 events	2424	6189	2759	6968	3389	3009
	1%	2%	1%	2%	1%	1%
grade 6 events	18699	76049	26746	90326	27316	23898
	9%	27%	12%	30%	11%	11%
grade 7 events	39559	54793	39932	50789	46202	41194
	20%	19%	18%	17%	19%	20%

2.2 Compared Parameters

Parameter	Planned	Actual	Parameter	Planned	Actual
Instrument	ACIS	ACIS	Obspar format version number	6	6
Detector	ACIS-456789	ACIS-456789	Obspar file type	PREDICTED	ACTUAL
Grating	NONE	NONE	Obspar update status	NONE	UPDATED
Data mode	FAINT	FAINT	On-chip summing requested	N	N
Observation mode	SECONDARY	SECONDARY	Subarray requested	NONE	NONE
Pointing RA	0	322.0078624848643	Alternating exposures requested	N	N
Pointing Dec	0	-8.023812392682471	Primary exposure time	3.2	3.2
Pointing Roll	0.0	270.8090620380016			
SIM focus pos (mm)	-0.684267	-0.7809083437167272			
SIM defocus (mm)	0	0.7524282956875696			
SIM translation stage pos (mm)	-190.132523	250.466033080201			
SIM translation stage offset (mm)	0	-0.01005468664627074			
Observation start time	210630758.975559	210630757.95055			
Observation start date	2004-09-03T20:32:39	2004-09-03T20:32:37			
Observation end time	210672950.02744	210672949.00243			
Observation end date	2004-09-04T08:15:50	2004-09-04T08:15:49			
Read mode	TIMED	TIMED			

2.3 Aspect

2.4 Star Slots

2.5 FID Slots

A Summary

A.1 Status

V&V Scientist	Beth Sundheim
V&V Date (YYYY-MM-DD)	2006.04.19
V&V Edition	1
V&V Disposition and Status	OK
V&V Charge Time	7.79435995

A.2 Comments