

V&V Reference Report

L2 ASCDS Version : 7.6.7.1

Observation 60011 - L2 Version 001
Chandra X-Ray Center

L2 Processing Date : Apr 15 2006

Contents

1	Front	2
2	OBI	3
2.1	OBI	3
2.1.1	Images	3
2.1.2	Bias	3
2.1.3	Parameters	4
2.1.4	Events	4
2.2	Compared Parameters	5
2.3	Aspect	6
2.4	Star Slots	8
2.5	FID Slots	8
A	Summary	9
A.1	Status	9
A.2	Comments	9

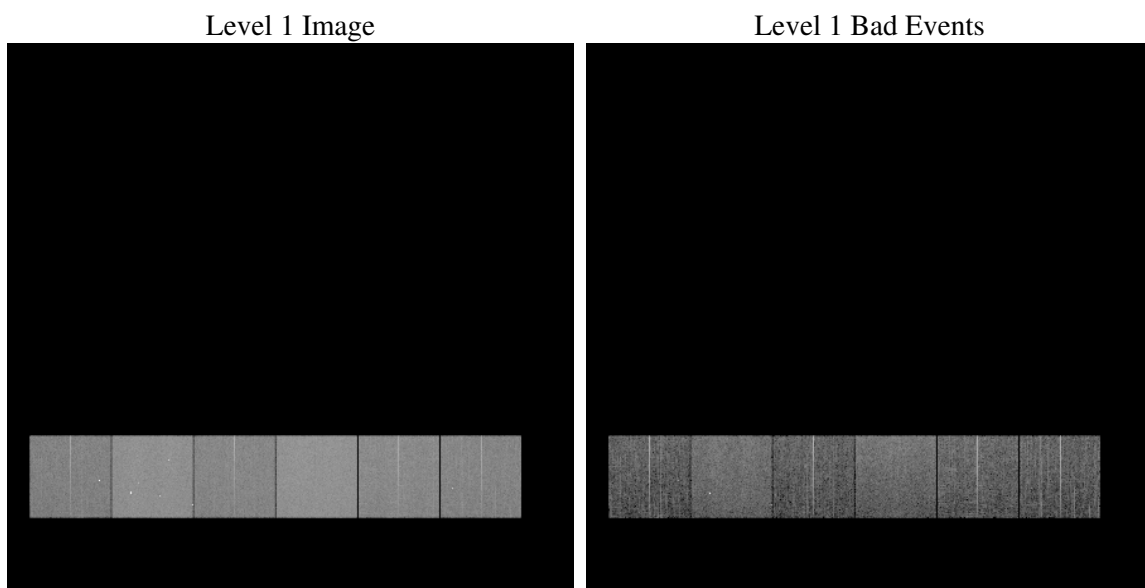
1 Front

seq_num	
obs_id	60011
title	ACIS-456789 diagnostics
observer	CHANDRA engineering request/realtime commanding
object	
dtcycle	0
cycle	P
ra_targ	0.0
dec_targ	0.0
ra_nom	355.0528247861
dec_nom	-57.994262089036
roll_nom	338.70737466585
revision	2
ontime	8182.3999695182
livetime	8078.7894942544
ontime4	5515.0830285251
ontime5	8182.3999695182
ontime6	6111.4219278097
ontime7	8182.3999695182
ontime8	6328.567145139
ontime9	5916.963531971
l2events	1081418

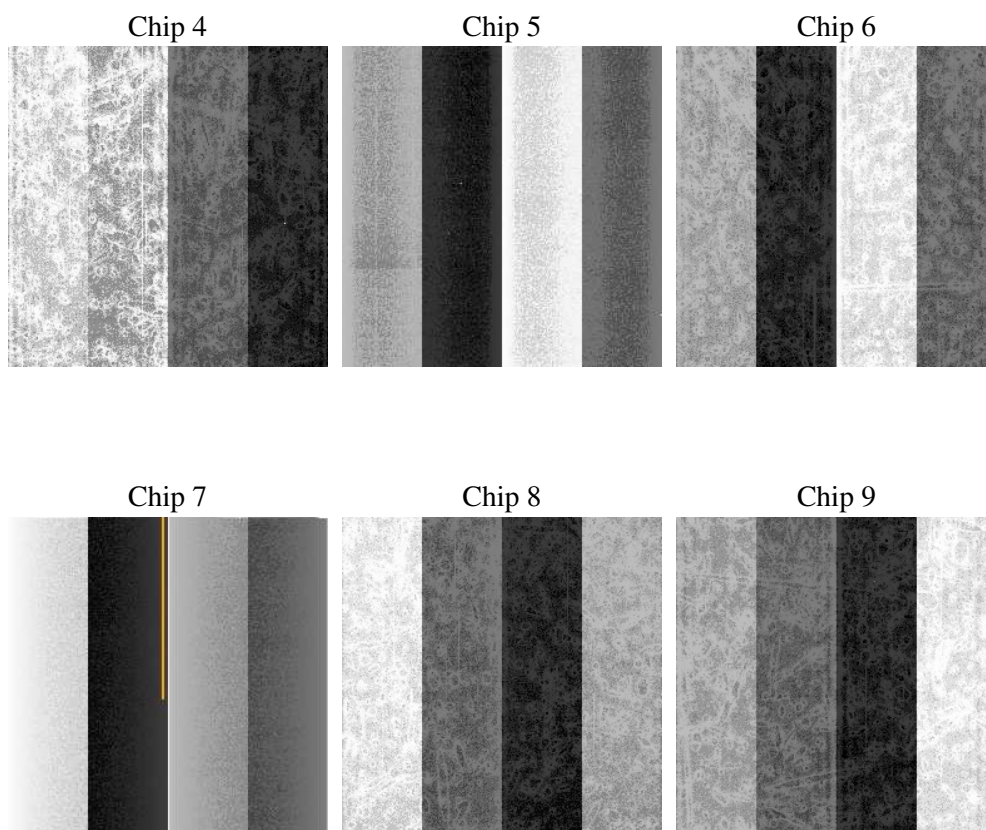
2 OBI

2.1 OBI

2.1.1 Images



2.1.2 Bias



2.1.3 Parameters

obi_num	1
ascdsver	7.6.7.1
caldbver	3.2.1
date	2006-04-15T13:03:49
revision	2

sched_exp_time	0.0
ontime	8280.7595800459
ontime4	5581.0329063237
ontime5	8280.7595800459
ontime6	6187.0947563052
ontime7	8280.7595800459
ontime8	6400.9989535809
ontime9	5982.9134396613
l1events	1497508

2.1.4 Events

	ccd 4	ccd 5	ccd 6	ccd 7	ccd 8	ccd 9
level 1 events	200383	293994	228507	309426	247072	218126
rejected events	50092	71407	50556	67814	57716	51948
rejected %	24%	24%	22%	21%	23%	23%

	ccd 4	ccd 5	ccd 6	ccd 7	ccd 8	ccd 9
grade 0 events	88235	24575	97751	40056	102982	92095
	44%	8%	42%	12%	41%	42%
grade 1 events	763	158	487	125	598	563
	0%	0%	0%	0%	0%	0%
grade 2 events	23967	105450	31061	74639	33843	28646
	11%	35%	13%	24%	13%	13%
grade 3 events	10221	6988	11421	17053	12548	10889
	5%	2%	4%	5%	5%	4%
grade 4 events	10131	6785	11152	16786	12751	10966
	5%	2%	4%	5%	5%	5%
grade 5 events	2745	6890	3153	7504	3883	3322
	1%	2%	1%	2%	1%	1%
grade 6 events	19646	81528	28765	96031	29391	25399
	9%	27%	12%	31%	11%	11%
grade 7 events	44675	61620	44717	57232	51076	46246
	22%	20%	19%	18%	20%	21%

2.2 Compared Parameters

Parameter	Planned	Actual	Parameter	Planned	Actual
Instrument	ACIS	ACIS	Obspar format version number	6	6
Detector	ACIS-456789	ACIS-456789	Obspar file type	PREDICTED	ACTUAL
Grating	NONE	NONE	Obspar update status	NONE	UPDATED
Data mode	FAINT	FAINT	On-chip summing requested	N	N
Observation mode	SECONDARY	SECONDARY	Subarray requested	NONE	NONE
Pointing RA	0	355.0528247860951	Alternating exposures requested	N	N
Pointing Dec	0	-57.99426208903608	Primary exposure time	3.2	3.2
Pointing Roll	0.0	338.7073746658454			
SIM focus pos (mm)	-0.684267	-0.6828225247311905			
SIM defocus (mm)	0	0.8505141146731063			
SIM translation stage pos (mm)	-190.132523	250.466033080201			
SIM translation stage offset (mm)	0	-0.01005468664627074			
Observation start time	213655161.010616	213655159.98563			
Observation start date	2004-10-08T20:39:21	2004-10-08T20:39:19			
Observation end time	213666880.861139	213666879.83615			
Observation end date	2004-10-08T23:54:41	2004-10-08T23:54:39			
Read mode	TIMED	TIMED			

2.3 Aspect

2.4 Star Slots

2.5 FID Slots

A Summary

A.1 Status

V&V Scientist	Beth Sundheim
V&V Date (YYYY-MM-DD)	2006.04.16
V&V Edition	1
V&V Disposition and Status	OK
V&V Charge Time	8.18239996

A.2 Comments