

V&V Reference Report

L2 ASCDS Version : 7.6.7.1

Observation 59987 - L2 Version 001
Chandra X-Ray Center

L2 Processing Date : Apr 13 2006

Contents

1	Front	2
2	OBI	3
2.1	OBI	3
2.1.1	Images	3
2.1.2	Bias	3
2.1.3	Parameters	4
2.1.4	Events	4
2.2	Compared Parameters	5
2.3	Aspect	6
2.4	Star Slots	8
2.5	FID Slots	8
A	Summary	9
A.1	Status	9
A.2	Comments	9

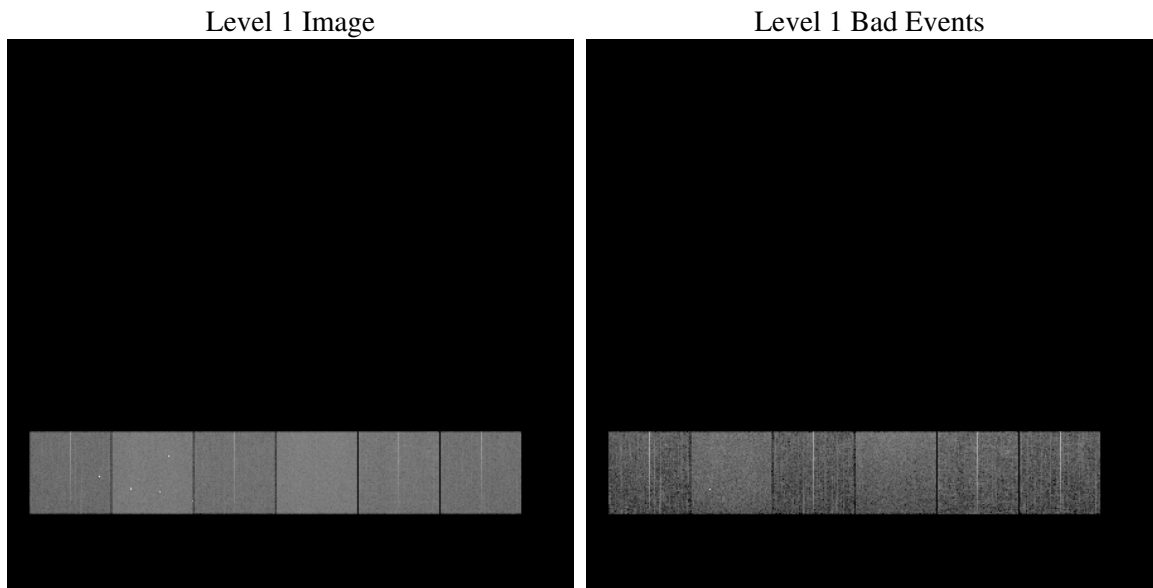
1 Front

seq_num	
obs_id	59987
title	ACIS-456789 diagnostics
observer	CHANDRA engineering request/realtime commanding
object	
dtcycle	0
cycle	P
ra_targ	0.0
dec_targ	0.0
ra_nom	83.612616401628
dec_nom	22.023636736793
roll_nom	91.407899504112
revision	2
ontime	7798.3999709487
livetime	7699.6519348838
ontime4	5390.3496844471
ontime5	7798.3999709487
ontime6	5912.1480480433
ontime7	7798.3999709487
ontime8	6155.22212708
ontime9	5720.9300914109
l2events	1029726

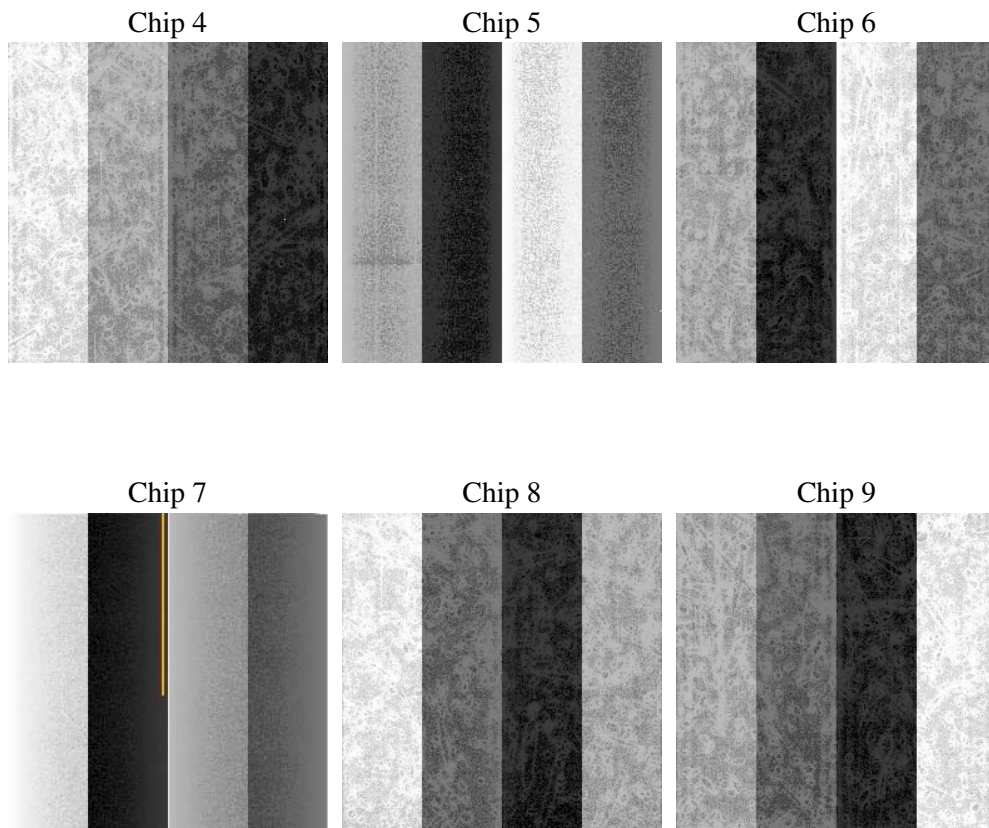
2 OBI

2.1 OBI

2.1.1 Images



2.1.2 Bias



2.1.3 Parameters

obi_num	0
ascdsver	7.6.7.1
caldsver	3.2.1
date	2006-04-13T19:41:38
revision	2

sched_exp_time	0.0
ontime	7801.1097195446
ontime4	5393.059433043
ontime5	7801.1097195446
ontime6	5914.8577966392
ontime7	7801.1097195446
ontime8	6157.9318756759
ontime9	5723.6398400068
l1events	1412592

2.1.4 Events

	ccd 4	ccd 5	ccd 6	ccd 7	ccd 8	ccd 9
level 1 events	190904	276387	215740	289944	235446	204171
rejected events	46335	64549	46137	59032	53772	46855
rejected %	24%	23%	21%	20%	22%	22%

	ccd 4	ccd 5	ccd 6	ccd 7	ccd 8	ccd 9
grade 0 events	83889	26058	91881	40011	98269	86040
	43%	9%	42%	13%	41%	42%
grade 1 events	668	106	517	133	545	580
	0%	0%	0%	0%	0%	0%
grade 2 events	23047	97246	29412	68990	32014	26961
	12%	35%	13%	23%	13%	13%
grade 3 events	9642	6622	10767	16605	11905	10174
	5%	2%	4%	5%	5%	4%
grade 4 events	9728	6642	10569	16607	11858	10221
	5%	2%	4%	5%	5%	5%
grade 5 events	2588	6382	2925	7080	3809	3116
	1%	2%	1%	2%	1%	1%
grade 6 events	18349	75363	27060	88800	27715	24008
	9%	27%	12%	30%	11%	11%
grade 7 events	42993	57968	42609	51718	49331	43071
	22%	20%	19%	17%	20%	21%

2.2 Compared Parameters

Parameter	Planned	Actual	Parameter	Planned	Actual
Instrument	ACIS	ACIS	Obspar format version number	6	6
Detector	ACIS-456789	ACIS-456789	Obspar file type	PREDICTED	ACTUAL
Grating	NONE	NONE	Obspar update status	NONE	UPDATED
Data mode	FAINT	FAINT	On-chip summing requested	N	N
Observation mode	SECONDARY	SECONDARY	Subarray requested	NONE	NONE
Pointing RA	0	83.61261640162812	Alternating exposures requested	N	N
Pointing Dec	0	22.02363673679343	Primary exposure time	3.2	3.2
Pointing Roll	0.0	91.40789950411202			
SIM focus pos (mm)	-0.684267	-0.6828225247311905			
SIM defocus (mm)	0	0.8505141146731063			
SIM translation stage pos (mm)	-190.132523	250.466033080201			
SIM translation stage offset (mm)	0	-0.01005468664627074			
Observation start time	215433911.240237	215433910.21523			
Observation start date	2004-10-29T10:45:11	2004-10-29T10:45:10			
Observation end time	215449347.740929	215449346.71593			
Observation end date	2004-10-29T15:02:28	2004-10-29T15:02:26			
Read mode	TIMED	TIMED			

2.3 Aspect

2.4 Star Slots

2.5 FID Slots

A Summary

A.1 Status

V&V Scientist	Jen Lauer
V&V Date (YYYY-MM-DD)	2006.04.14
V&V Edition	1
V&V Disposition and Status	OK
V&V Charge Time	7.79839997

A.2 Comments