

V&V Reference Report

L2 ASCDS Version : 7.6.7.1

Observation 59958 - L2 Version _e1
Chandra X-Ray Center

L2 Processing Date : Apr 10 2006

Contents

1	Front	2
2	OBI Primary	3
2.1	OBI	3
2.1.1	Images	3
2.1.2	Bias	3
2.1.3	Parameters	4
2.1.4	Events	4
2.2	Compared Parameters	5
2.3	Aspect	6
2.4	Star Slots	8
2.5	FID Slots	8
3	OBI Secondary	8
3.1	OBI	8
3.1.1	Images	8
3.1.2	Bias	8
3.1.3	Parameters	9
3.1.4	Events	9
A	Summary	10
A.1	Status	10
A.2	Comments	10

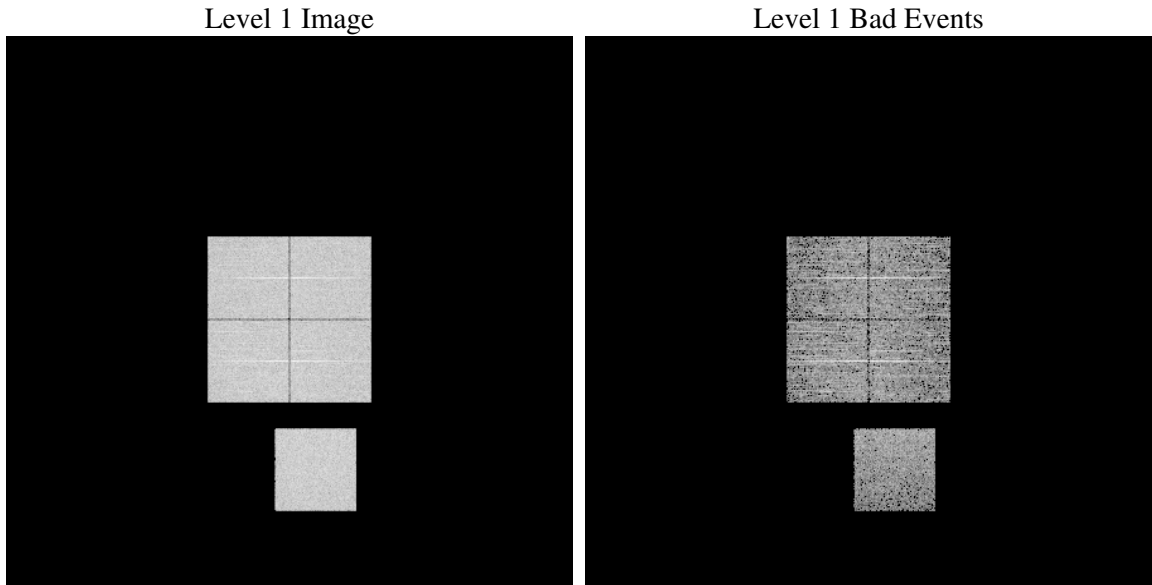
1 Front

seq_num	
obs_id	59958
title	ACIS-01237 diagnostics
observer	CHANDRA engineering request/realtime commanding
object	
dtcycle	0
cycle	P
ra_targ	0.0
dec_targ	0.0
ra_nom	45.430080624711
dec_nom	-6.893505530098
roll_nom	334.88788935172
revision	2
ontime	5327.0629179776
livetime	2590.0432971704
ontime0	5327.0629179776
ontime1	5327.0628980696
ontime2	5327.0628980696
ontime3	5327.0628781915
ontime7	5327.0629179776
l2events	343305

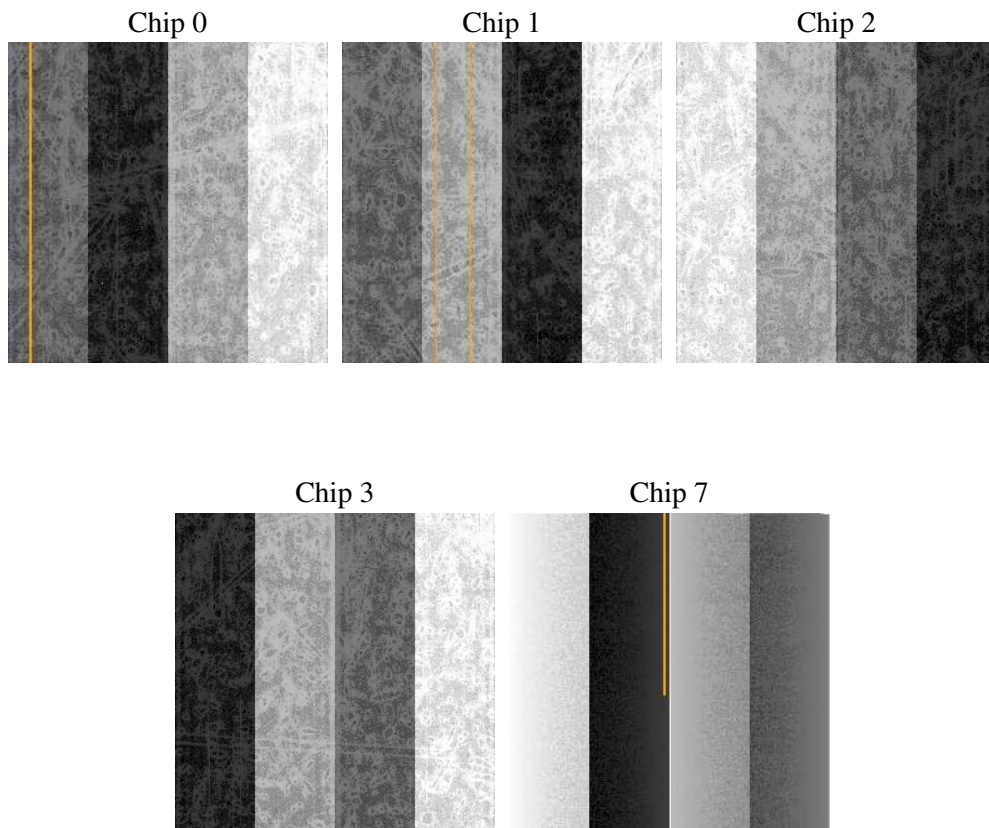
2 OBI Primary

2.1 OBI

2.1.1 Images



2.1.2 Bias



2.1.3 Parameters

obi_num	1
ascdsver	7.6.7.1
caldbver	3.2.1
date	2006-04-11T00:52:02
revision	2

sched_exp_time	0.0
ontime	5331.0873727798
ontime0	5331.0873727798
ontime1	5331.0873727798
ontime2	5331.0873727798
ontime3	5331.0873727798
ontime7	5331.0873727798
llevents	464223

2.1.4 Events

	ccd 0	ccd 1	ccd 2	ccd 3	ccd 7
level 1 events	90258	90864	94279	92622	96200
rejected events	19777	20132	22445	20898	19635
rejected %	21%	22%	23%	22%	20%

	ccd 0	ccd 1	ccd 2	ccd 3	ccd 7
grade 0 events	38753	38616	40262	40127	13411
	42%	42%	42%	43%	13%
grade 1 events	219	207	273	259	48
	0%	0%	0%	0%	0%
grade 2 events	12382	12685	12240	12357	23245
	13%	13%	12%	13%	24%
grade 3 events	4556	4431	4609	4658	5424
	5%	4%	4%	5%	5%
grade 4 events	4568	4744	4638	4711	5550
	5%	5%	4%	5%	5%
grade 5 events	1198	1196	1220	1272	2400
	1%	1%	1%	1%	2%
grade 6 events	10222	10256	10085	9871	28935
	11%	11%	10%	10%	30%
grade 7 events	18360	18729	20952	19367	17187
	20%	20%	22%	20%	17%

2.2 Compared Parameters

Parameter	Planned	Actual	Parameter	Planned	Actual
Instrument	ACIS	ACIS	Obspar format version number	6	6
Detector	ACIS-01237	ACIS-01237	Obspar file type	PREDICTED	ACTUAL
Grating	NONE	NONE	Obspar update status	NONE	UPDATED
Data mode	FAINT	FAINT	On-chip summing requested	N	N
Observation mode	SECONDARY	SECONDARY	Subarray requested	NONE	NONE
Pointing RA	0	45.43008062471115	Alternating exposures requested	Y	Y
Pointing Dec	0	-6.893505530098038	Primary exposure time	3	3
Pointing Roll	0.0	334.8878893517164	Secondary exposure time	3.2	3.2
SIM focus pos (mm)	-0.782348	-0.7809083437167272	Duty cycle	1	1
SIM defocus (mm)	0	0.7524282956875696			
SIM translation stage pos (mm)	-233.592463	250.4635187648994			
SIM translation stage offset (mm)	0	-0.007540371344731511			
Observation start time	217527297.534117	217527296.50911			
Observation start date	2004-11-22T16:14:58	2004-11-22T16:14:56			
Observation end time	217551423.9852	217551422.9602			
Observation end date	2004-11-22T22:57:04	2004-11-22T22:57:02			
Read mode	TIMED	TIMED			

2.3 Aspect

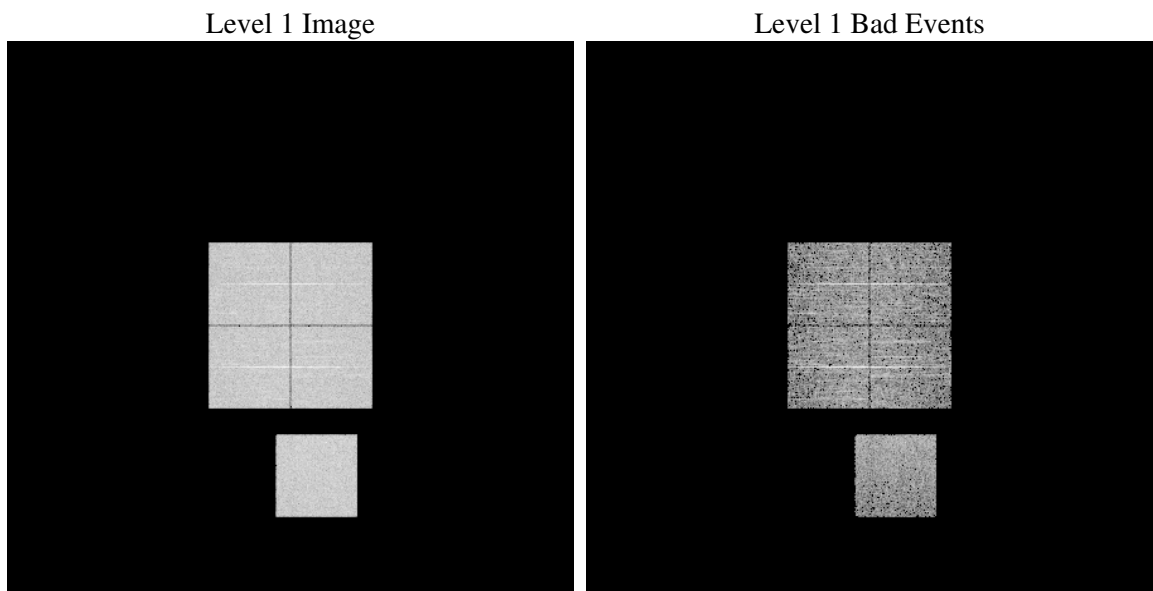
2.4 Star Slots

2.5 FID Slots

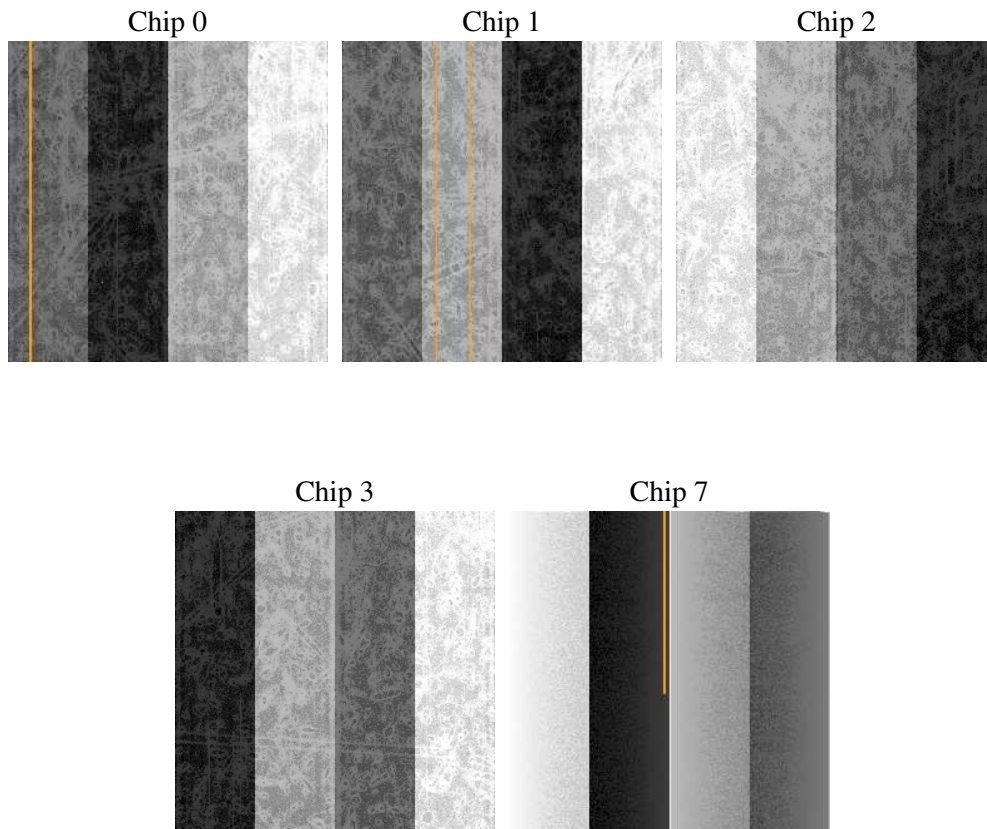
3 OBI Secondary

3.1 OBI

3.1.1 Images



3.1.2 Bias



3.1.3 Parameters

obi_num	1
ascdsver	7.6.7.1
caldsver	3.2.1
date	2006-04-11T01:02:59
revision	2

sched_exp_time	0.0
ontime	2800.2585525513
ontime0	2800.2585525513
ontime1	2800.2585525513
ontime2	2800.2585525513
ontime3	2800.2585525513
ontime7	2800.2585525513
l1events	488361

3.1.4 Events

	ccd 0	ccd 1	ccd 2	ccd 3	ccd 7
level 1 events	95397	95289	98017	97274	102384
rejected events	20147	19474	21874	20795	21183
rejected %	21%	20%	22%	21%	20%

	ccd 0	ccd 1	ccd 2	ccd 3	ccd 7
grade 0 events	41110	41591	42311	42959	13766
	43%	43%	43%	44%	13%
grade 1 events	263	201	298	254	31
	0%	0%	0%	0%	0%
grade 2 events	13277	13470	13006	13031	24612
	13%	14%	13%	13%	24%
grade 3 events	4923	4779	5113	4995	5707
	5%	5%	5%	5%	5%
grade 4 events	4940	4855	4959	5006	5694
	5%	5%	5%	5%	5%
grade 5 events	1218	1287	1229	1331	2475
	1%	1%	1%	1%	2%
grade 6 events	11088	11198	10849	10551	31506
	11%	11%	11%	10%	30%
grade 7 events	18578	17908	20252	19147	18593
	19%	18%	20%	19%	18%

A Summary

A.1 Status

V&V Scientist	Jen Lauer
V&V Date (YYYY-MM-DD)	2006.04.11
V&V Edition	1
V&V Disposition and Status	OK
V&V Charge Time	8.12408043

A.2 Comments