

V&V Reference Report

L2 ASCDS Version : 7.6.7.1

Observation 59953 - L2 Version 002
Chandra X-Ray Center

L2 Processing Date : Apr 10 2006

Contents

1	Front	2
2	OBI	3
2.1	OBI	3
2.1.1	Images	3
2.1.2	Bias	3
2.1.3	Parameters	4
2.1.4	Events	4
2.2	Compared Parameters	5
2.3	Aspect	6
2.4	Star Slots	8
2.5	FID Slots	8
A	Summary	9
A.1	Status	9
A.2	Comments	9

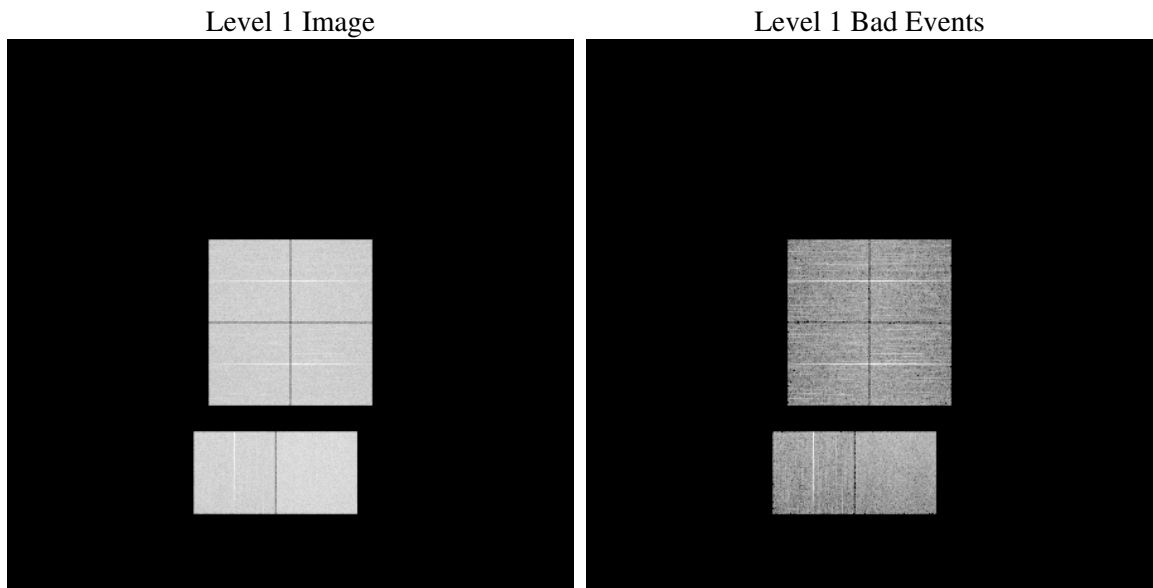
1 Front

seq_num	
obs_id	59953
title	ACIS-012367 diagnostics
observer	CHANDRA engineering request/realtime commanding
object	
dtcycle	0
cycle	P
ra_targ	0.0
dec_targ	0.0
ra_nom	79.256764978435
dec_nom	48.600400152704
roll_nom	146.31308026773
revision	2
ontime	8281.5999691486
livetime	8176.7333637585
ontime0	6946.3163796663
ontime1	6939.8343895078
ontime2	6593.0494587719
ontime3	6693.5202071667
ontime6	7286.6194894612
ontime7	8281.5999691486
l2events	1119752

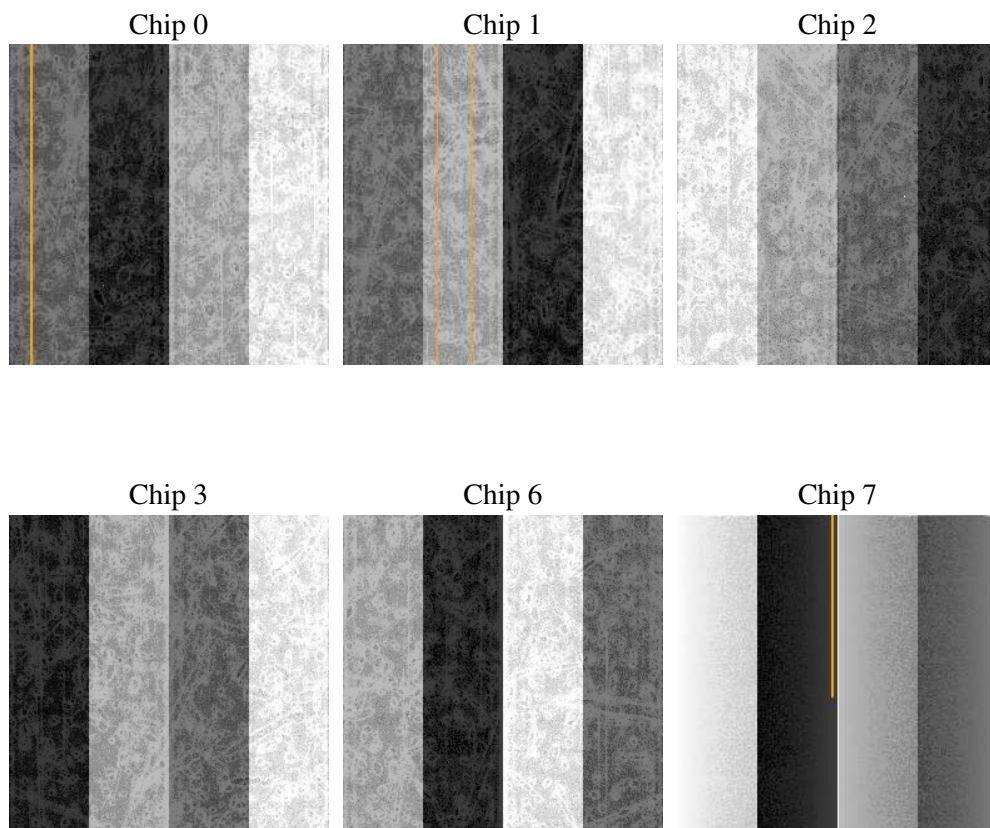
2 OBI

2.1 OBI

2.1.1 Images



2.1.2 Bias



2.1.3 Parameters

obi_num	0
ascdsver	7.6.7.1
caldbver	3.2.1
date	2006-04-11T01:58:18
revision	2

sched_exp_time	0.0
ontime	8284.0178520083
ontime0	6948.734262526
ontime1	6942.2522723675
ontime2	6595.4673416317
ontime3	6695.9380900264
ontime6	7289.0373723209
ontime7	8284.0178520083
l1events	1497166

2.1.4 Events

	ccd 0	ccd 1	ccd 2	ccd 3	ccd 6	ccd 7
level 1 events	235846	237873	229661	234174	258764	300848
rejected events	49205	50796	50544	53303	54128	62902
rejected %	20%	21%	22%	22%	20%	20%

	ccd 0	ccd 1	ccd 2	ccd 3	ccd 6	ccd 7
grade 0 events	102636	102288	100371	101113	110793	39737
	43%	43%	43%	43%	42%	13%
grade 1 events	630	555	679	685	585	104
	0%	0%	0%	0%	0%	0%
grade 2 events	32438	33325	30355	31142	35154	72570
	13%	14%	13%	13%	13%	24%
grade 3 events	12210	11941	11754	11940	12754	16361
	5%	5%	5%	5%	4%	5%
grade 4 events	12003	12020	11716	11874	12855	16341
	5%	5%	5%	5%	4%	5%
grade 5 events	3136	3115	2857	3381	3634	7324
	1%	1%	1%	1%	1%	2%
grade 6 events	27354	27503	24921	24802	33080	92937
	11%	11%	10%	10%	12%	30%
grade 7 events	45439	47126	47008	49237	49909	55474
	19%	19%	20%	21%	19%	18%

2.2 Compared Parameters

Parameter	Planned	Actual	Parameter	Planned	Actual
Instrument	ACIS	ACIS	Obspar format version number	6	6
Detector	ACIS-012367	ACIS-012367	Obspar file type	PREDICTED	ACTUAL
Grating	NONE	NONE	Obspar update status	NONE	UPDATED
Data mode	FAINT	FAINT	On-chip summing requested	N	N
Observation mode	SECONDARY	SECONDARY	Subarray requested	NONE	NONE
Pointing RA	0	79.25676497843537	Alternating exposures requested	N	N
Pointing Dec	0	48.60040015270354	Primary exposure time	3.2	3.2
Pointing Roll	0.0	146.3130802677323			
SIM focus pos (mm)	-0.782348	-0.6828225247311905			
SIM defocus (mm)	0	0.8505141146731063			
SIM translation stage pos (mm)	-233.592463	250.466033080201			
SIM translation stage offset (mm)	0	-0.01005468664627074			
Observation start time	217754511.344316	217754510.31932			
Observation start date	2004-11-25T07:21:51	2004-11-25T07:21:50			
Observation end time	217775821.095273	217775820.07028			
Observation end date	2004-11-25T13:17:01	2004-11-25T13:17:00			
Read mode	TIMED	TIMED			

2.3 Aspect

2.4 Star Slots

2.5 FID Slots

A Summary

A.1 Status

V&V Scientist	Jen Lauer
V&V Date (YYYY-MM-DD)	2006.04.11
V&V Edition	1
V&V Disposition and Status	OK
V&V Charge Time	8.28159996

A.2 Comments