

# V&V Reference Report

## L2 ASCDS Version : 7.6.8

Observation 62848 - L2 Version 001  
Chandra X-Ray Center

L2 Processing Date : Aug 1 2006

## Contents

<b>1</b>	<b>Front</b>	<b>2</b>
<b>2</b>	<b>OBI</b>	<b>3</b>
2.1	OBI . . . . .	3
2.1.1	Images . . . . .	3
2.1.2	Bias . . . . .	3
2.1.3	Parameters . . . . .	4
2.1.4	Events . . . . .	4
2.2	Compared Parameters . . . . .	5
2.3	Aspect . . . . .	6
2.4	Star Slots . . . . .	8
2.5	FID Slots . . . . .	8
<b>A</b>	<b>Summary</b>	<b>9</b>
A.1	Status . . . . .	9
A.2	Comments . . . . .	9

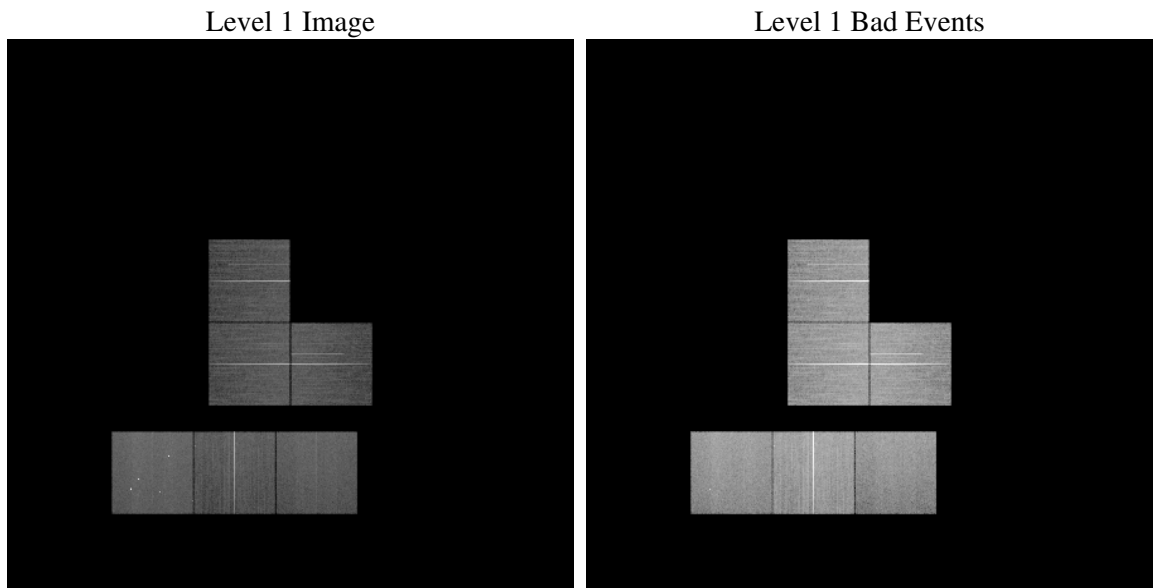
# 1 Front

seq_num	&#160
obs_id	62848
title	ACIS-023567 diagnostics
observer	CHANDRA engineering request/realtime commanding
object	&#160
dtcycle	0
cycle	P
ra_targ	0.0
dec_targ	0.0
ra_nom	284.64206586162
dec_nom	-37.72995463608
roll_nom	86.886926153911
revision	2
ontime	48070.276900053
livetime	47461.582109499
ontime0	48067.035840183
ontime2	48073.517870367
ontime3	48073.517870367
ontime5	48070.276890069
ontime6	48073.517850459
ontime7	48070.276900053
l2events	325151

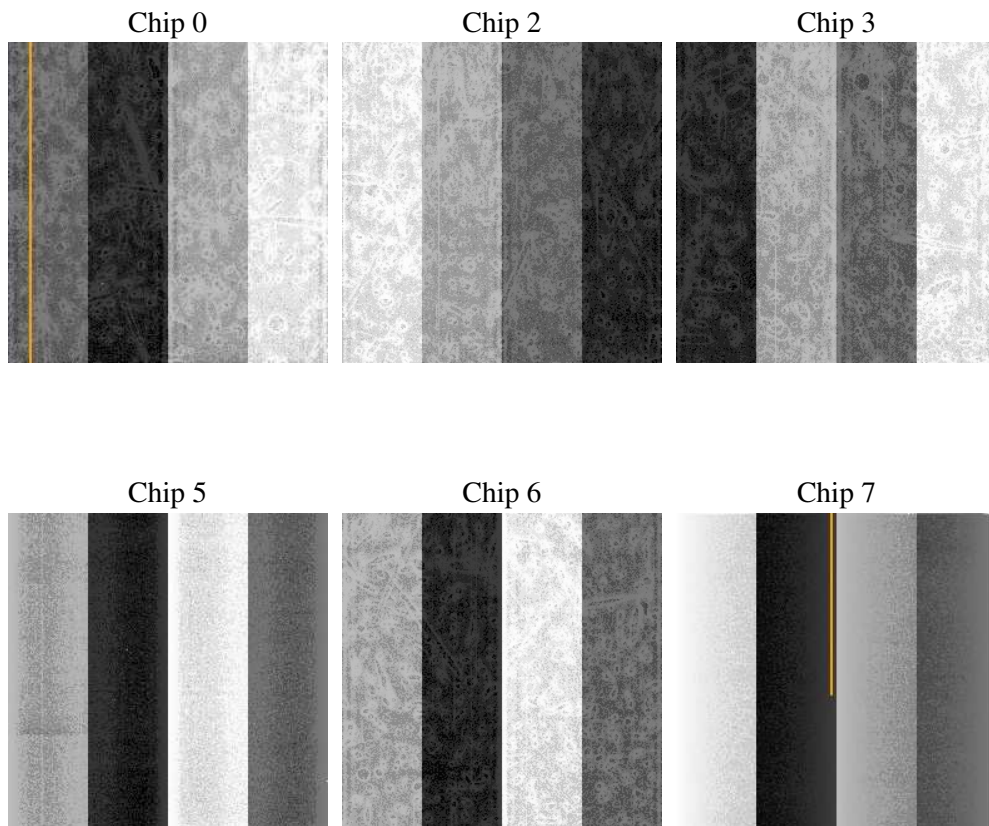
## 2 OBI

### 2.1 OBI

#### 2.1.1 Images



#### 2.1.2 Bias



### 2.1.3 Parameters

obi_num	0
ascdsver	7.6.8
caldbver	3.2.2
date	2006-08-01T11:26:04
revision	2

sched_exp_time	0.0
ontime	48158.099824578
ontime0	48154.858764708
ontime2	48161.340775013
ontime3	48161.340775013
ontime5	48158.099814594
ontime6	48161.340755105
ontime7	48158.099824578
l1events	1574998

### 2.1.4 Events

	ccd 0	ccd 2	ccd 3	ccd 5	ccd 6	ccd 7
level 1 events	225585	250596	240372	332571	259500	266374
rejected events	202845	228303	219452	171048	235310	155692
rejected %	89%	91%	91%	51%	90%	58%

	ccd 0	ccd 2	ccd 3	ccd 5	ccd 6	ccd 7
grade 0 events	7219	7323	6744	19381	7594	5999
	3%	2%	2%	5%	2%	2%
grade 1 events	108	110	111	378	131	142
	0%	0%	0%	0%	0%	0%
grade 2 events	5263	5401	4557	46961	5364	26977
	2%	2%	1%	14%	2%	10%
grade 3 events	2943	2590	2681	3836	2991	6779
	1%	1%	1%	1%	1%	2%
grade 4 events	2660	2693	2644	3744	2867	6482
	1%	1%	1%	1%	1%	2%
grade 5 events	8517	8047	9599	17403	10337	21102
	3%	3%	3%	5%	3%	7%
grade 6 events	4692	4328	4333	87910	5418	64668
	2%	1%	1%	26%	2%	24%
grade 7 events	194183	220104	209703	152958	224798	134225
	86%	87%	87%	45%	86%	50%

## 2.2 Compared Parameters

Parameter	Planned	Actual	Parameter	Planned	Actual
Instrument	ACIS	ACIS	Obspar format version number	6	6
Detector	ACIS-023567	ACIS-023567	Obspar file type	PREDICTED	ACTUAL
Grating	NONE	NONE	Obspar update status	NONE	UPDATED
Data mode	VFAINT	VFAINT	On-chip summing requested	N	N
Observation mode	SECONDARY	SECONDARY	Subarray requested	NONE	NONE
Pointing RA	0	284.6420658616205	Alternating exposures requested	N	N
Pointing Dec	0	-37.72995463608017	Primary exposure time	0.000000	3.2
Pointing Roll	0.0	86.88692615391088			
SIM focus pos (mm)	-0.684267	-1.038866356238299			
SIM defocus (mm)	0	0.001426264420575141			
SIM translation stage pos (mm)	-190.132523	51.99855475156236			
SIM translation stage offset (mm)	0	74.98693414003921			
Observation start time	168429188.590547	168429187.56583			
Observation start date	2003-05-04T09:53:09	2003-05-04T09:53:07			
Observation end time	168479069.192654	168479068.16794			
Observation end date	2003-05-04T23:44:29	2003-05-04T23:44:28			
Read mode	TIMED	TIMED			

## 2.3 Aspect



## **2.4 Star Slots**

## **2.5 FID Slots**

## A Summary

### A.1 Status

V&V Scientist	Jen Lauer
V&V Date (YYYY-MM-DD)	2006.08.01
V&V Edition	1
V&V Disposition and Status	OK
V&V Charge Time	48.0702769

### A.2 Comments