

V&V Reference Report

L2 ASCDS Version : 7.6.8

Observation 62846 - L2 Version 001
Chandra X-Ray Center

L2 Processing Date : Jun 27 2006

Contents

1	Front	2
2	OBI	3
2.1	OBI	3
2.1.1	Images	3
2.1.2	Bias	3
2.1.3	Parameters	4
2.1.4	Events	4
2.2	Compared Parameters	5
2.3	Aspect	6
2.4	Star Slots	8
2.5	FID Slots	8
A	Summary	9
A.1	Status	9
A.2	Comments	9

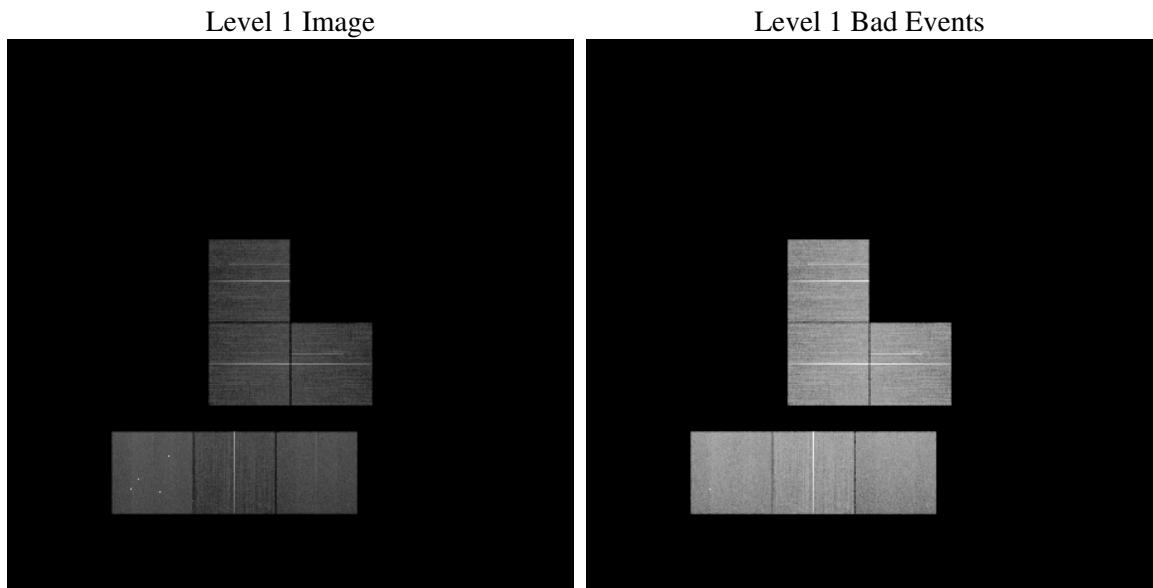
1 Front

seq_num	
obs_id	62846
title	ACIS-023567 diagnostics
observer	CHANDRA engineering request/realtime commanding
object	
dtcycle	0
cycle	P
ra_targ	0.0
dec_targ	0.0
ra_nom	115.06770620913
dec_nom	4.8723418910375
roll_nom	61.384538258029
revision	2
ontime	46450.994805992
livetime	45862.804340327
ontime0	46444.512805641
ontime2	46441.271825254
ontime3	46450.994805992
ontime5	46447.753785878
ontime6	46441.271775573
ontime7	46450.994805992
l2events	298488

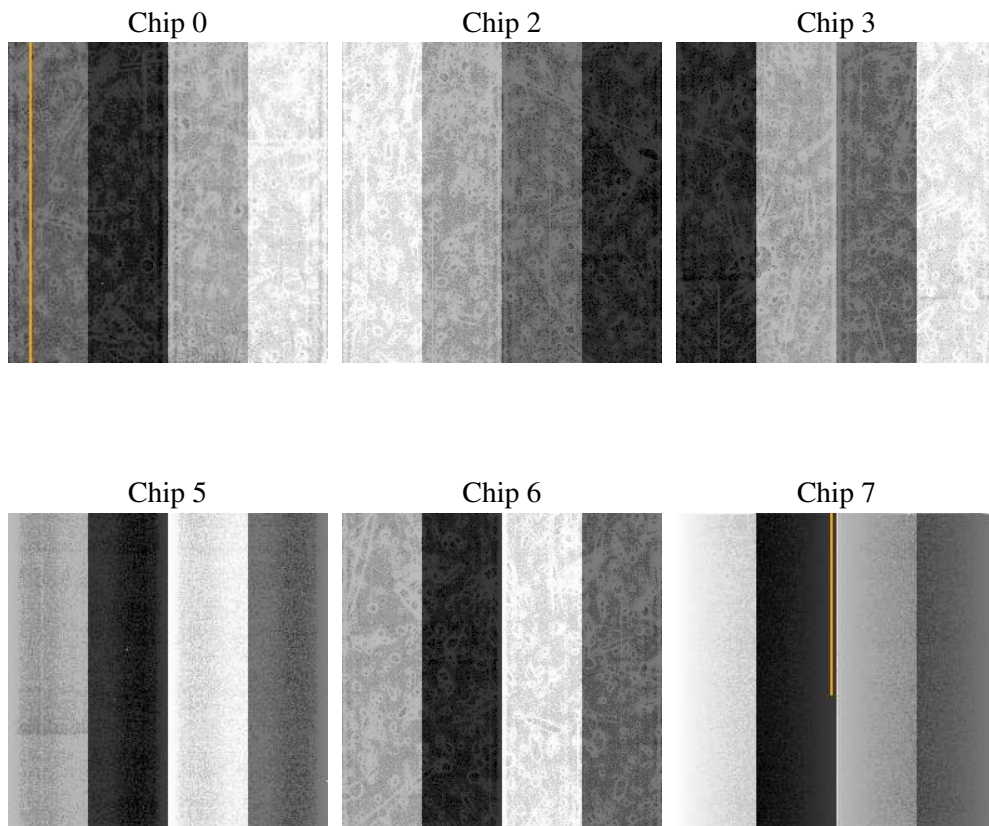
2 OBI

2.1 OBI

2.1.1 Images



2.1.2 Bias



2.1.3 Parameters

obi_num	0
ascdsver	7.6.8
caldbver	3.2.2
date	2006-06-27T13:24:32
revision	2

sched_exp_time	0.0
ontime	46453.411584705
ontime0	46446.929584354
ontime2	46443.688603967
ontime3	46453.411564767
ontime5	46450.170564592
ontime6	46443.688534349
ontime7	46453.411584705
l1events	1417767

2.1.4 Events

	ccd 0	ccd 2	ccd 3	ccd 5	ccd 6	ccd 7
level 1 events	202005	222035	211954	313209	222895	245669
rejected events	180760	201488	192444	158123	200901	144741
rejected %	89%	90%	90%	50%	90%	58%

	ccd 0	ccd 2	ccd 3	ccd 5	ccd 6	ccd 7
grade 0 events	6736	6767	6219	24128	6871	5169
	3%	3%	2%	7%	3%	2%
grade 1 events	94	79	130	678	128	113
	0%	0%	0%	0%	0%	0%
grade 2 events	5135	4961	4293	43233	4950	24661
	2%	2%	2%	13%	2%	10%
grade 3 events	2647	2499	2441	3511	2615	5673
	1%	1%	1%	1%	1%	2%
grade 4 events	2426	2346	2384	3387	2497	5659
	1%	1%	1%	1%	1%	2%
grade 5 events	7908	7380	8608	15789	9315	18840
	3%	3%	4%	5%	4%	7%
grade 6 events	4304	3976	4174	80838	5063	59773
	2%	1%	1%	25%	2%	24%
grade 7 events	172755	194027	183705	141645	191456	125781
	85%	87%	86%	45%	85%	51%

2.2 Compared Parameters

Parameter	Planned	Actual	Parameter	Planned	Actual
Instrument	ACIS	ACIS	Obspar format version number	6	6
Detector	ACIS-023567	ACIS-023567	Obspar file type	PREDICTED	ACTUAL
Grating	NONE	NONE	Obspar update status	NONE	UPDATED
Data mode	VFAINT	VFAINT	On-chip summing requested	N	N
Observation mode	SECONDARY	SECONDARY	Subarray requested	NONE	NONE
Pointing RA	0	115.0677062091253	Alternating exposures requested	N	N
Pointing Dec	0	4.872341891037542	Primary exposure time	0.000000	3.2
Pointing Roll	0.0	61.38453825802907			
SIM focus pos (mm)	-0.684267	-1.038866356238299			
SIM defocus (mm)	0	0.001426264420575141			
SIM translation stage pos (mm)	-190.132523	51.9960404362608			
SIM translation stage offset (mm)	0	74.98944845534076			
Observation start time	187261430.346498	187261429.32177			
Observation start date	2003-12-08T09:03:50	2003-12-08T09:03:49			
Observation end time	187309629.948589	187309628.92386			
Observation end date	2003-12-08T22:27:10	2003-12-08T22:27:08			
Read mode	TIMED	TIMED			

2.3 Aspect

2.4 Star Slots

2.5 FID Slots

A Summary

A.1 Status

V&V Scientist	Jen Lauer
V&V Date (YYYY-MM-DD)	2006.06.27
V&V Edition	1
V&V Disposition and Status	OK
V&V Charge Time	46.4509948

A.2 Comments