

V&V Reference Report

L2 ASCDS Version : 8.4.5

Observation 60883 - L2 Version 3
Chandra X-Ray Center

L2 Processing Date : Oct 20 2012

Contents

1	Front	2
2	OBI	3
2.1	OBI	3
2.1.1	Images	3
2.1.2	Bias	3
2.1.3	Parameters	4
2.1.4	Events	4
2.2	Compared Parameters	5
2.3	Star Slots	6
2.4	FID Slots	6
A	Summary	7
A.1	Status	7
A.2	Comments	7

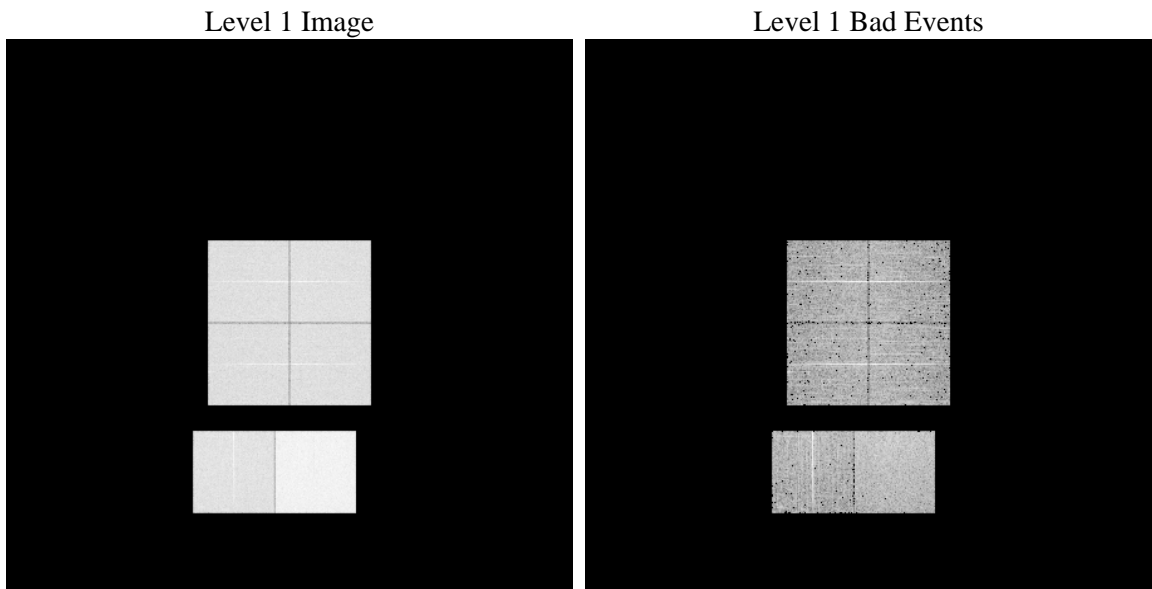
1 Front

seq_num	 	Sequence number
obs_id	60883	Observation id
title	ACIS-012367 diagnostics	Proposal title
observer	CHANDRA engineering request/realtime commanding	Principal investig
object	 	Source name
dtcycle	0	
cycle	P	events from which exps? Prim/Second/Both
ra_targ	0.0	Observer's specified target RA [deg]
dec_targ	0.0	Observer's specified target Dec [deg]
ra_nom	174.99657550589	Nominal RA [deg]
dec_nom	-3.9716210384448	Nominal Dec [deg]
roll_nom	63.965095668049	Nominal Roll [deg]
revision	3	Processing version of data
ontime	7795.1999709606	Sum of GTIs [s]
livetime	7696.4924552224	Livetime [s]
ontime0	4119.9295735657	Sum of GTIs [s]
ontime1	4235.3470733166	Sum of GTIs [s]
ontime2	3891.8420073986	Sum of GTIs [s]
ontime3	3956.4981189966	Sum of GTIs [s]
ontime6	4355.3464888632	Sum of GTIs [s]
ontime7	7795.1999709606	Sum of GTIs [s]
l2events	1186162	Number of level 2 events

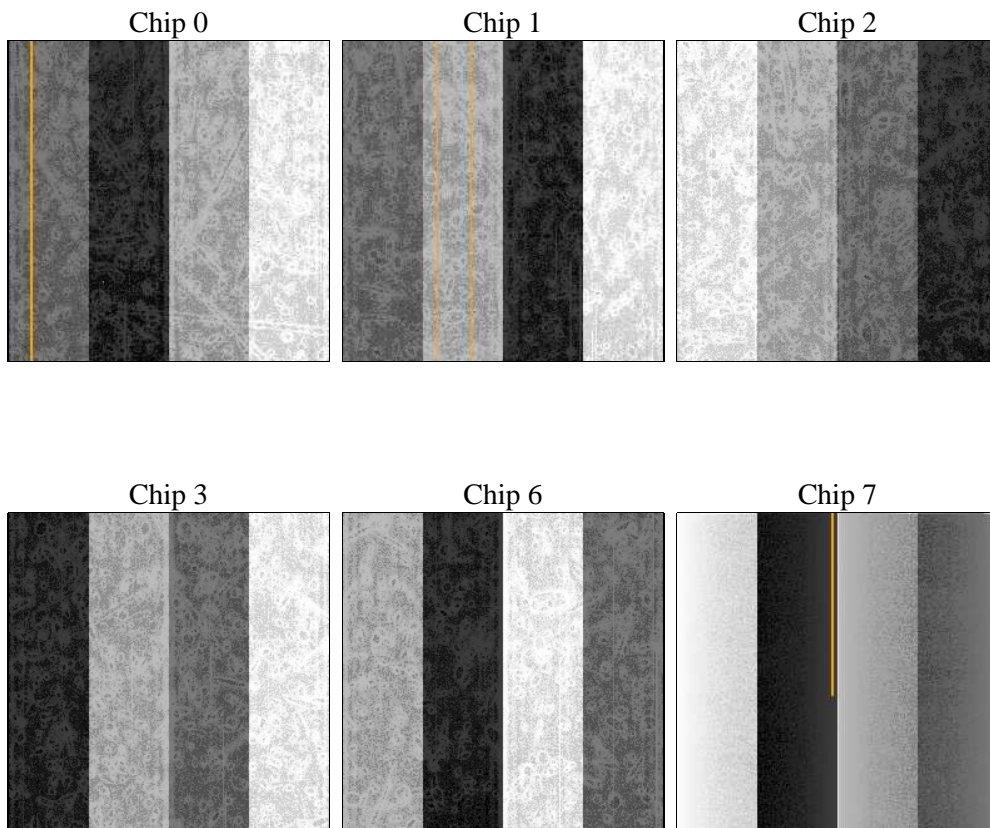
2 OBI

2.1 OBI

2.1.1 Images



2.1.2 Bias



2.1.3 Parameters

obi_num	0	Obi number	sched_exp_time	0.0	[s] Scheduled observation exposure time
ascdsver	8.4.5	Processing system revision	ontime	7795.1999709606	Sum of GTIs [s]
caldbver	4.5.2	 	ontime0	4119.9295735657	Sum of GTIs [s]
date	2012-10-20T17:03:37	Date and time of file creation	ontime1	4235.3470733166	Sum of GTIs [s]
revision	3	Processing version of data	ontime2	3891.8420073986	Sum of GTIs [s]
			ontime3	3956.4981189966	Sum of GTIs [s]
			ontime6	4355.3464888632	Sum of GTIs [s]
			ontime7	7795.1999709606	Sum of GTIs [s]
			l1events	1427441	Number of level 1 events

2.1.4 Events

	ccd 0	ccd 1	ccd 2	ccd 3	ccd 6	ccd 7		ccd 0	ccd 1	ccd 2	ccd 3	ccd 6	ccd 7
level 1 events	203274	208972	196453	200063	226692	391987	grade 0 events	97370	100067	94973	96084	106351	86604
rejected events	27722	27920	28357	29526	31856	42515		47%	47%	48%	48%	46%	22%
rejected %	13%	13%	14%	14%	14%	10%	grade 1 events	497	460	563	624	518	224
								0%	0%	0%	0%	0%	0%
							grade 2 events	30462	31738	28262	28805	33108	76966
								14%	15%	14%	14%	14%	19%
							grade 3 events	11372	11463	10898	11219	12275	34930
								5%	5%	5%	5%	5%	8%
							grade 4 events	11463	11616	10917	11201	12353	34804
								5%	5%	5%	5%	5%	8%
							grade 5 events	1906	1916	1772	1983	2183	8082
								0%	0%	0%	0%	0%	2%
							grade 6 events	25024	26168	23046	23485	30833	116307
								12%	12%	11%	11%	13%	29%
							grade 7 events	25180	25544	26022	26662	29071	34070
								12%	12%	13%	13%	12%	8%

2.2 Compared Parameters

Parameter	Planned	Actual	Parameter	Planned	Actual
Instrument	ACIS	ACIS	Obspar format version number	7	7
Detector	ACIS-012367	ACIS-012367	Obspar file type	PREDICTED	ACTUAL
Grating	NONE	NONE	Obspar update status	NONE	UPDATED
Data mode	FAINT	FAINT	On-chip summing requested	N	N
Observation mode	SECONDARY	SECONDARY	Subarray requested	NONE	NONE
[deg] Pointing RA	0	174.9965755058943	Alternating exposures requested	N	N
[deg] Pointing Dec	0	-3.971621038444781	[s] Primary exposure time	3.2	3.2
[deg] Pointing Roll	0.0	63.96509566804892			
[mm] SIM focus pos	-0.782348	-0.7809083437167272			
[mm] SIM defocus	0	0.7524282956875696			
[mm] SIM translation stage pos	-233.592463	250.466033080201			
[mm] SIM translation stage offset	0	-0.01005468664627074			
[s] Observation start time (MET)	158771080.583998	158771079.55929			
Observation start date	2003-01-12T15:04:41	2003-01-12T15:04:39			
[s] Observation end time (MET)	158806369.285474	158806368.26076			
Observation end date	2003-01-13T00:52:49	2003-01-13T00:52:48			
Read mode	TIMED	TIMED			

2.3 Star Slots

2.4 FID Slots

A Summary

A.1 Status

V&V Scientist	Beth Sundheim
V&V Date (YYYY-MM-DD)	2012.11.20
V&V Edition	1
V&V Disposition and Status	OK
V&V Charge Time	7.7951999709606

A.2 Comments