

V&V Reference Report

L2 ASCDS Version : 7.6.8

Observation 60871 - L2 Version 001
Chandra X-Ray Center

L2 Processing Date : Jul 19 2006

Contents

1	Front	2
2	OBI	3
2.1	OBI	3
2.1.1	Images	3
2.1.2	Bias	3
2.1.3	Parameters	4
2.1.4	Events	4
2.2	Compared Parameters	5
2.3	Aspect	6
2.4	Star Slots	8
2.5	FID Slots	8
A	Summary	9
A.1	Status	9
A.2	Comments	9

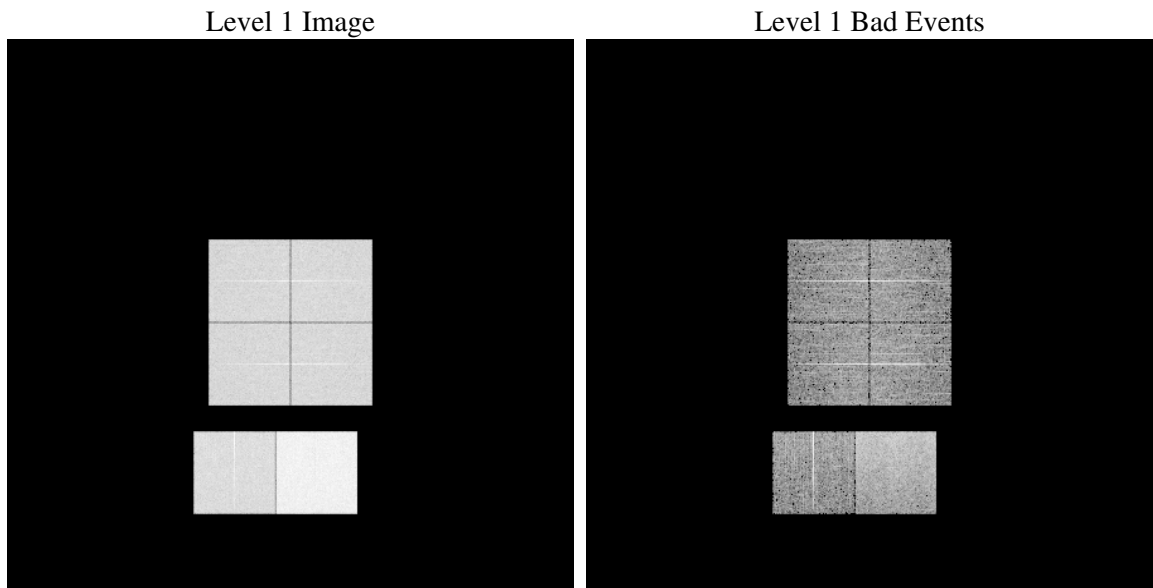
1 Front

seq_num	
obs_id	60871
title	ACIS-012367 diagnostics
observer	CHANDRA engineering request/realtime commanding
object	
dtcycle	0
cycle	P
ra_targ	0.0
dec_targ	0.0
ra_nom	270.59883193489
dec_nom	66.75992692369
roll_nom	35.430504119485
revision	2
ontime	8467.1999684572
livetime	8359.9831841209
ontime0	4523.0052556098
ontime1	4542.4921655655
ontime2	4383.7258239686
ontime3	4396.5253451765
ontime6	4847.0388160944
ontime7	8467.1999684572
l2events	1282035

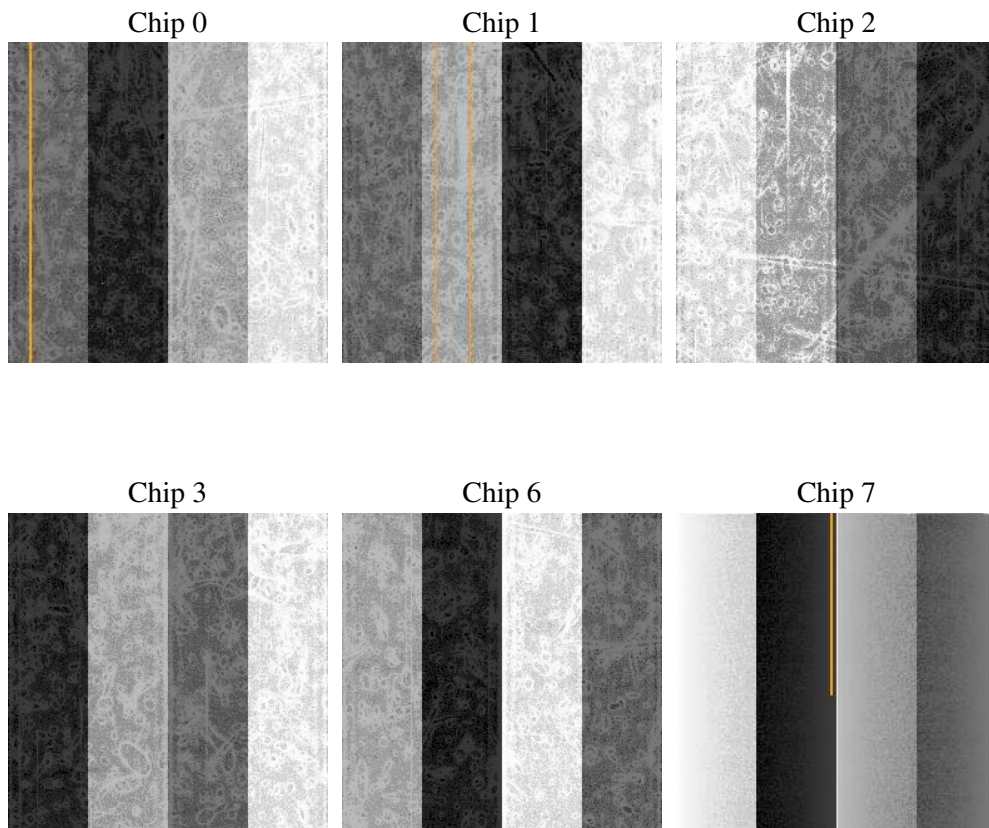
2 OBI

2.1 OBI

2.1.1 Images



2.1.2 Bias



2.1.3 Parameters

obi_num	0
ascdsver	7.6.8
caldbver	3.2.2
date	2006-07-19T16:59:14
revision	2

sched_exp_time	0.0
ontime	8468.7332449257
ontime0	4524.4727774858
ontime1	4543.9186474383
ontime2	4385.1112658381
ontime3	4398.0749470592
ontime6	4848.5720925629
ontime7	8468.7332449257
l1events	1548049

2.1.4 Events

	ccd 0	ccd 1	ccd 2	ccd 3	ccd 6	ccd 7
level 1 events	219937	222066	217378	219330	247917	421421
rejected events	28700	29229	29141	31134	32007	57177
rejected %	13%	13%	13%	14%	12%	13%

	ccd 0	ccd 1	ccd 2	ccd 3	ccd 6	ccd 7
grade 0 events	105731	106130	105945	106371	117701	66727
	48%	47%	48%	48%	47%	15%
grade 1 events	562	505	623	604	569	157
	0%	0%	0%	0%	0%	0%
grade 2 events	33402	34078	31917	31941	37414	109729
	15%	15%	14%	14%	15%	26%
grade 3 events	12498	12289	12099	12133	13256	27075
	5%	5%	5%	5%	5%	6%
grade 4 events	12275	12331	12231	12141	13257	26780
	5%	5%	5%	5%	5%	6%
grade 5 events	1943	2002	1957	2061	2289	7569
	0%	0%	0%	0%	0%	1%
grade 6 events	27331	28009	26045	25610	34282	133933
	12%	12%	11%	11%	13%	31%
grade 7 events	26195	26722	26561	28469	29149	49451
	11%	12%	12%	12%	11%	11%

2.2 Compared Parameters

Parameter	Planned	Actual	Parameter	Planned	Actual
Instrument	ACIS	ACIS	Obspar format version number	6	6
Detector	ACIS-012367	ACIS-012367	Obspar file type	PREDICTED	ACTUAL
Grating	NONE	NONE	Obspar update status	NONE	UPDATED
Data mode	FAINT	FAINT	On-chip summing requested	N	N
Observation mode	SECONDARY	SECONDARY	Subarray requested	NONE	NONE
Pointing RA	0	270.5988319348863	Alternating exposures requested	N	N
Pointing Dec	0	66.75992692368982	Primary exposure time	0.000000	3.2
Pointing Roll	0.0	35.43050411948489			
SIM focus pos (mm)	-0.782348	-0.7809083437167272			
SIM defocus (mm)	0	0.7524282956875696			
SIM translation stage pos (mm)	-233.592463	250.466033080201			
SIM translation stage offset (mm)	0	-0.01005468664627074			
Observation start time	159953461.183492	159953460.15879			
Observation start date	2003-01-26T07:31:01	2003-01-26T07:31:00			
Observation end time	159972179.734276	159972178.70957			
Observation end date	2003-01-26T12:43:00	2003-01-26T12:42:58			
Read mode	TIMED	TIMED			

2.3 Aspect

2.4 Star Slots

2.5 FID Slots

A Summary

A.1 Status

V&V Scientist	Jen Lauer
V&V Date (YYYY-MM-DD)	2006.07.19
V&V Edition	1
V&V Disposition and Status	OK
V&V Charge Time	8.46719996

A.2 Comments