

# V&V Reference Report

## L2 ASCDS Version : 7.6.8

Observation 60853 - L2 Version 001  
Chandra X-Ray Center

L2 Processing Date : Jul 21 2006

## Contents

<b>1</b>	<b>Front</b>	<b>2</b>
<b>2</b>	<b>OBI</b>	<b>3</b>
2.1	OBI . . . . .	3
2.1.1	Images . . . . .	3
2.1.2	Bias . . . . .	3
2.1.3	Parameters . . . . .	4
2.1.4	Events . . . . .	4
2.2	Compared Parameters . . . . .	5
2.3	Aspect . . . . .	6
2.4	Star Slots . . . . .	8
2.5	FID Slots . . . . .	8
<b>A</b>	<b>Summary</b>	<b>9</b>
A.1	Status . . . . .	9
A.2	Comments . . . . .	9

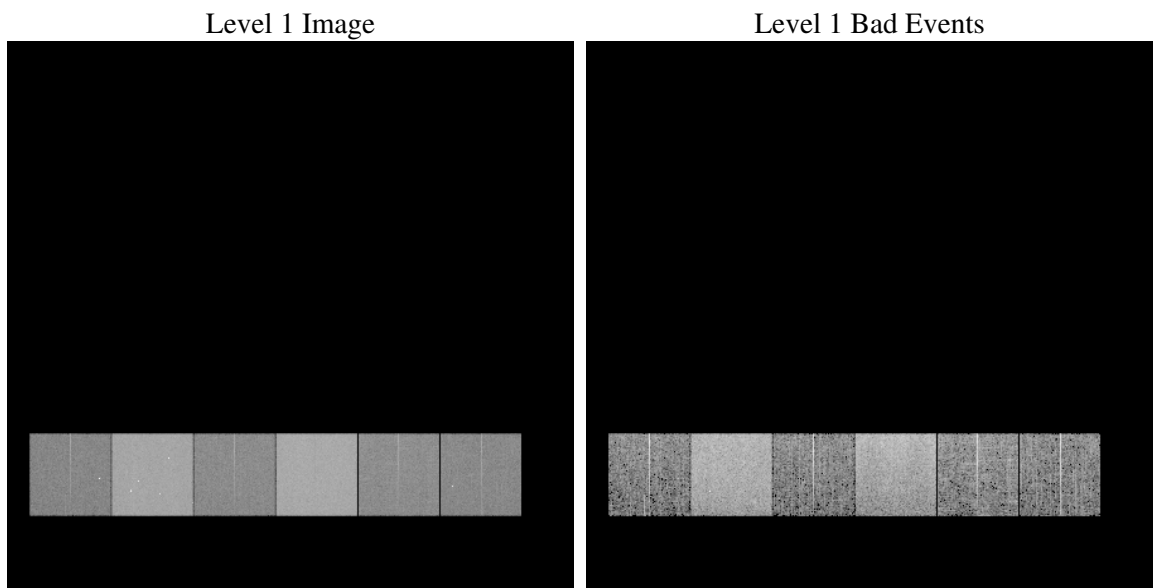
# 1 Front

seq_num	&#160
obs_id	60853
title	ACIS-456789 diagnostics
observer	CHANDRA engineering request/realtime commanding
object	&#160
dtcycle	0
cycle	P
ra_targ	0.0
dec_targ	0.0
ra_nom	161.93956986531
dec_nom	61.996582005819
roll_nom	153.95783017954
revision	2
ontime	8460.0859948695
livetime	8352.9592919502
ontime4	3394.5535919666
ontime5	8460.1270348728
ontime6	3708.8912597001
ontime7	8460.0859948695
ontime8	3828.8897675872
ontime9	3592.091725558
l2events	1243845

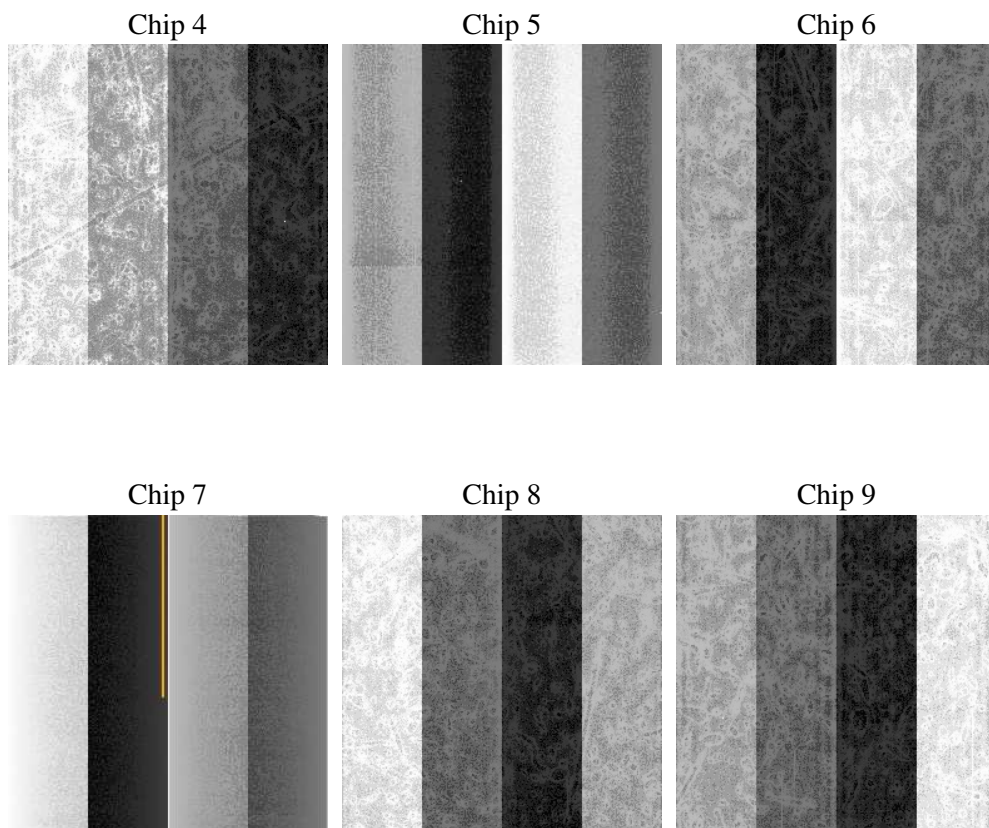
## 2 OBI

### 2.1 OBI

#### 2.1.1 Images



#### 2.1.2 Bias



### 2.1.3 Parameters

obi_num	0
ascdsver	7.6.8
caldsver	3.2.2
date	2006-07-21T03:56:04
revision	2

sched_exp_time	0.0
ontime	8462.2599351108
ontime4	3396.6044121981
ontime5	8462.2599351108
ontime6	3710.9831199348
ontime7	8462.2599351108
ontime8	3830.8995478451
ontime9	3594.3067058027
l1events	1543762

### 2.1.4 Events

	ccd 4	ccd 5	ccd 6	ccd 7	ccd 8	ccd 9
level 1 events	166041	387277	189075	420915	201708	178746
rejected events	26376	67141	26564	60139	31638	27210
rejected %	15%	17%	14%	14%	15%	15%

	ccd 4	ccd 5	ccd 6	ccd 7	ccd 8	ccd 9
grade 0 events	81288	37571	88717	64914	93707	83765
	48%	9%	46%	15%	46%	46%
grade 1 events	617	124	441	170	473	511
	0%	0%	0%	0%	0%	0%
grade 2 events	22317	153303	28075	108700	29602	25976
	13%	39%	14%	25%	14%	14%
grade 3 events	9283	10365	10117	26556	10902	9660
	5%	2%	5%	6%	5%	5%
grade 4 events	9281	10015	10101	26070	10924	9698
	5%	2%	5%	6%	5%	5%
grade 5 events	1630	7095	1829	7641	2257	1966
	0%	1%	0%	1%	1%	1%
grade 6 events	17631	109004	25664	134663	25054	22576
	10%	28%	13%	31%	12%	12%
grade 7 events	23994	59800	24131	52201	28789	24594
	14%	15%	12%	12%	14%	13%

## 2.2 Compared Parameters

Parameter	Planned	Actual	Parameter	Planned	Actual
Instrument	ACIS	ACIS	Obspar format version number	6	6
Detector	ACIS-456789	ACIS-456789	Obspar file type	PREDICTED	ACTUAL
Grating	NONE	NONE	Obspar update status	NONE	UPDATED
Data mode	FAINT	FAINT	On-chip summing requested	N	N
Observation mode	SECONDARY	SECONDARY	Subarray requested	NONE	NONE
Pointing RA	0	161.9395698653091	Alternating exposures requested	N	N
Pointing Dec	0	61.99658200581917	Primary exposure time	0.000000	3.2
Pointing Roll	0.0	153.9578301795411			
SIM focus pos (mm)	-0.684267	-0.6828225247311905			
SIM defocus (mm)	0	0.8505141146731063			
SIM translation stage pos (mm)	-190.132523	250.466033080201			
SIM translation stage offset (mm)	0	-0.01005468664627074			
Observation start time	161102642.031742	161102641.00702			
Observation start date	2003-02-08T14:44:02	2003-02-08T14:44:01			
Observation end time	161118123.632393	161118122.60767			
Observation end date	2003-02-08T19:02:04	2003-02-08T19:02:02			
Read mode	TIMED	TIMED			

## 2.3 Aspect



## **2.4 Star Slots**

## **2.5 FID Slots**



## A Summary

### A.1 Status

V&V Scientist	Jen Lauer
V&V Date (YYYY-MM-DD)	2006.07.21
V&V Edition	1
V&V Disposition and Status	OK
V&V Charge Time	8.46008599

### A.2 Comments