

# V&V Reference Report

## L2 ASCDS Version : 8.4.5

Observation 60852 - L2 Version 3  
Chandra X-Ray Center

L2 Processing Date : Oct 22 2012

## Contents

<b>1</b>	<b>Front</b>	<b>2</b>
<b>2</b>	<b>OBI</b>	<b>3</b>
2.1	OBI . . . . .	3
2.1.1	Images . . . . .	3
2.1.2	Bias . . . . .	3
2.1.3	Parameters . . . . .	4
2.1.4	Events . . . . .	4
2.2	Compared Parameters . . . . .	5
2.3	Star Slots . . . . .	6
2.4	FID Slots . . . . .	6
<b>A</b>	<b>Summary</b>	<b>7</b>
A.1	Status . . . . .	7
A.2	Comments . . . . .	7

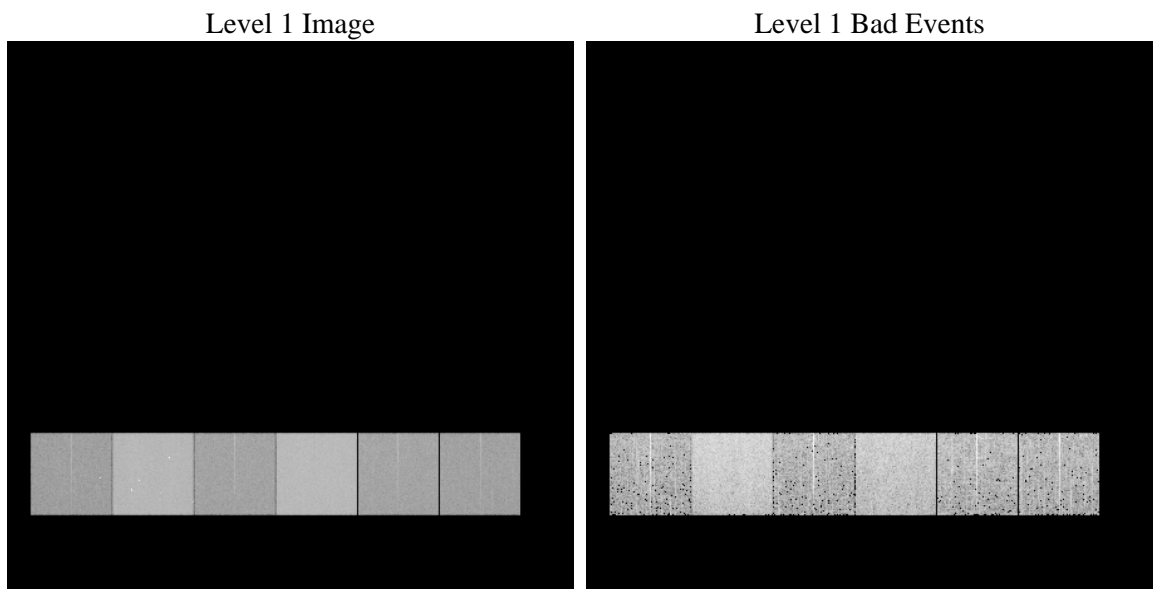
# 1 Front

seq_num	&#160	Sequence number
obs_id	60852	Observation id
title	ACIS-456789 diagnostics	Proposal title
observer	CHANDRA engineering request/realtime commanding	Principal investig
object	&#160	Source name
dtcycle	0	&#160
cycle	P	events from which exps? Prim/Second/Both
ra_targ	0.0	Observer's specified target RA [deg]
dec_targ	0.0	Observer's specified target Dec [deg]
ra_nom	120.69765342818	Nominal RA [deg]
dec_nom	33.571477222673	Nominal Dec [deg]
roll_nom	233.18513362267	Nominal Roll [deg]
revision	3	Processing version of data
ontime	7788.7999709845	Sum of GTIs [s]
livetime	7690.1734958996	Livetime [s]
ontime4	3181.2365506291	Sum of GTIs [s]
ontime5	7788.7999709845	Sum of GTIs [s]
ontime6	3468.565135777	Sum of GTIs [s]
ontime7	7788.7999709845	Sum of GTIs [s]
ontime8	3579.9231802821	Sum of GTIs [s]
ontime9	3333.4009715617	Sum of GTIs [s]
l2events	1166081	Number of level 2 events

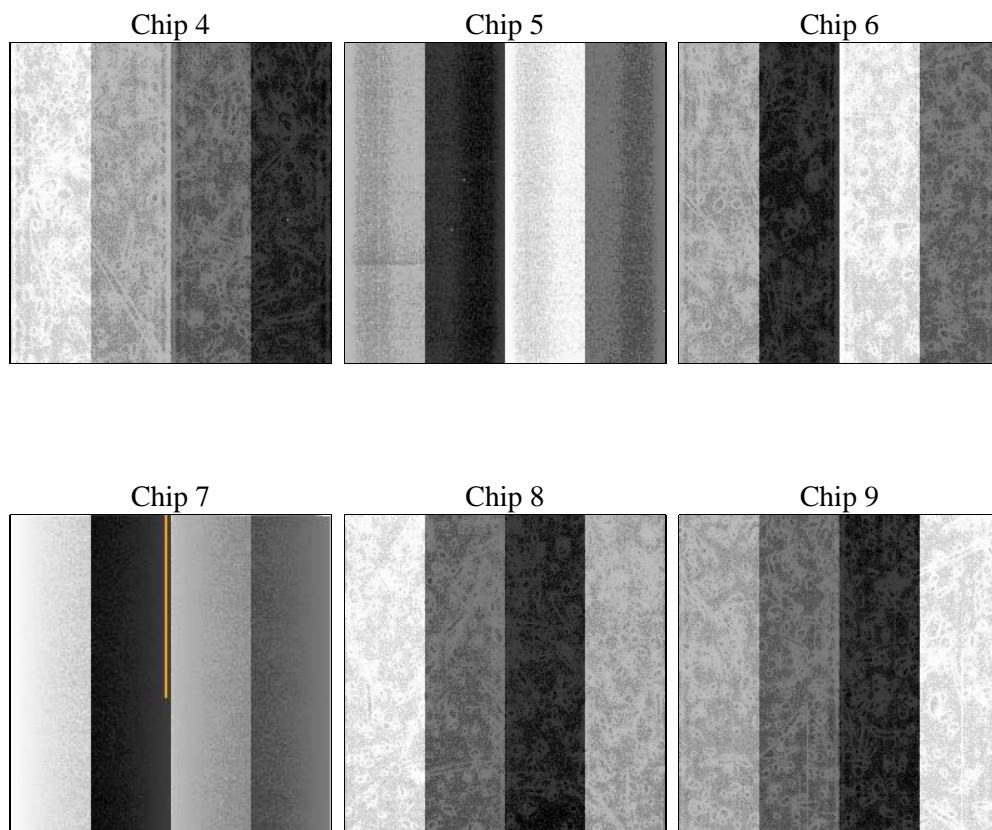
## 2 OBI

### 2.1 OBI

#### 2.1.1 Images



#### 2.1.2 Bias



### 2.1.3 Parameters

obi_num	0	Obi number	sched_exp_time	0.0	[s] Scheduled observation exposure time
ascdsver	8.4.5	Processing system revision	ontime	7788.7999709845	Sum of GTIs [s]
caldsver	4.5.2	&#160	ontime4	3181.2365506291	Sum of GTIs [s]
date	2012-10-22T10:37:30	Date and time of file creation	ontime5	7788.7999709845	Sum of GTIs [s]
revision	3	Processing version of data	ontime6	3468.565135777	Sum of GTIs [s]
			ontime7	7788.7999709845	Sum of GTIs [s]
			ontime8	3579.9231802821	Sum of GTIs [s]
			ontime9	3333.4009715617	Sum of GTIs [s]
			l1events	1422624	Number of level 1 events

### 2.1.4 Events

	ccd 4	ccd 5	ccd 6	ccd 7	ccd 8	ccd 9		ccd 4	ccd 5	ccd 6	ccd 7	ccd 8	ccd 9
level 1 events	152857	355839	176978	386192	185713	165045	grade 0 events	75862	70579	83413	86395	87692	77496
rejected events	23674	52731	24900	42252	27864	25382		49%	19%	47%	22%	47%	46%
rejected %	15%	14%	14%	10%	15%	15%	grade 1 events	548	234	406	202	465	471
								0%	0%	0%	0%	0%	0%
							grade 2 events	20239	110662	26257	76477	27289	23973
								13%	31%	14%	19%	14%	14%
							grade 3 events	8536	18226	9500	34729	10090	8936
								5%	5%	5%	8%	5%	5%
							grade 4 events	8446	18317	9276	34576	10023	8800
								5%	5%	5%	8%	5%	5%
							grade 5 events	1541	8931	1825	8194	2047	1781
								1%	2%	1%	2%	1%	1%
							grade 6 events	16100	85324	23632	111763	22755	20584
								10%	23%	13%	28%	12%	12%
							grade 7 events	21585	43566	22669	33856	25352	23004
								14%	12%	12%	8%	13%	13%

## 2.2 Compared Parameters

Parameter	Planned	Actual	Parameter	Planned	Actual
Instrument	ACIS	ACIS	Obspar format version number	7	7
Detector	ACIS-456789	ACIS-456789	Obspar file type	PREDICTED	ACTUAL
Grating	NONE	NONE	Obspar update status	NONE	UPDATED
Data mode	FAINT	FAINT	On-chip summing requested	N	N
Observation mode	SECONDARY	SECONDARY	Subarray requested	NONE	NONE
[deg] Pointing RA	0	120.6976534281753	Alternating exposures requested	N	N
[deg] Pointing Dec	0	33.57147722267297	[s] Primary exposure time	0.000000	3.2
[deg] Pointing Roll	0.0	233.1851336226679			
[mm] SIM focus pos	-0.684267	-0.6828225247311905			
[mm] SIM defocus	0	0.8505141146731063			
[mm] SIM translation stage pos	-190.132523	250.4635187648994			
[mm] SIM translation stage offset	0	-0.007540371344731511			
[s] Observation start time (MET)	161285253.989418	161285252.96468			
Observation start date	2003-02-10T17:27:34	2003-02-10T17:27:32			
[s] Observation end time (MET)	161314081.09063	161314080.0659			
Observation end date	2003-02-11T01:28:01	2003-02-11T01:28:00			
Read mode	TIMED	TIMED			

## 2.3 Star Slots

## 2.4 FID Slots

## A Summary

### A.1 Status

V&V Scientist	Beth Sundheim
V&V Date (YYYY-MM-DD)	2012.11.28
V&V Edition	1
V&V Disposition and Status	OK
V&V Charge Time	7.7887999709845

### A.2 Comments