

V&V Reference Report

L2 ASCDS Version : 7.6.8

Observation 60833 - L2 Version 001
Chandra X-Ray Center

L2 Processing Date : Jul 28 2006

Contents

1	Front	2
2	OBI	3
2.1	OBI	3
2.1.1	Images	3
2.1.2	Bias	3
2.1.3	Parameters	4
2.1.4	Events	4
2.2	Compared Parameters	5
2.3	Aspect	6
2.4	Star Slots	8
2.5	FID Slots	8
A	Summary	9
A.1	Status	9
A.2	Comments	9

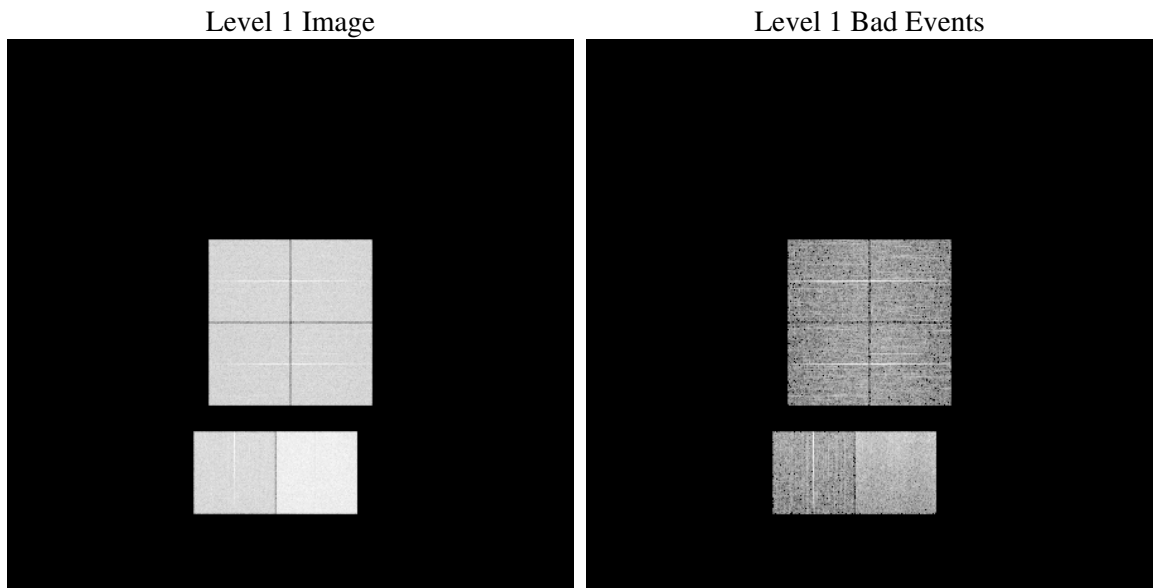
1 Front

seq_num	
obs_id	60833
title	ACIS-012367 diagnostics
observer	CHANDRA engineering request/realtime commanding
object	
dtcycle	0
cycle	P
ra_targ	0.0
dec_targ	0.0
ra_nom	99.218512174743
dec_nom	4.9781658897288
roll_nom	277.29295495546
revision	2
ontime	7791.9999709725
livetime	7693.332975561
ontime0	4253.238558799
ontime1	4366.7142460048
ontime2	4035.7119686007
ontime3	4197.76250422
ontime6	4512.1387403607
ontime7	7791.9999709725
l2events	1169414

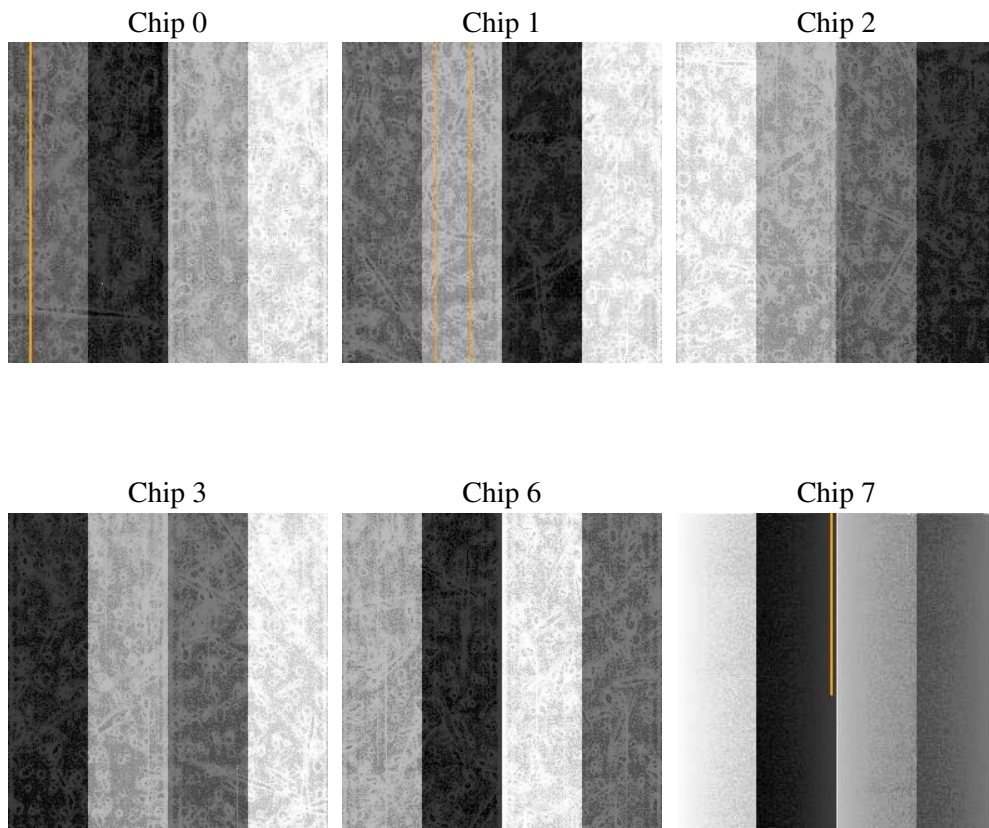
2 OBI

2.1 OBI

2.1.1 Images



2.1.2 Bias



2.1.3 Parameters

obi_num	0
ascdsver	7.6.8
caldbver	3.2.2
date	2006-07-28T05:23:16
revision	2

sched_exp_time	0.0
ontime	7794.6088575125
ontime0	4255.4681731164
ontime1	4368.9028203189
ontime2	4038.3208551407
ontime3	4200.3713907599
ontime6	4514.7476269007
ontime7	7794.6088575125
l1events	1425879

2.1.4 Events

	ccd 0	ccd 1	ccd 2	ccd 3	ccd 6	ccd 7
level 1 events	204398	209334	197522	204889	227533	382203
rejected events	28583	28587	28805	29890	31888	55106
rejected %	13%	13%	14%	14%	14%	14%

	ccd 0	ccd 1	ccd 2	ccd 3	ccd 6	ccd 7
grade 0 events	97535	99795	94926	98788	106894	58587
	47%	47%	48%	48%	46%	15%
grade 1 events	540	494	541	580	524	151
	0%	0%	0%	0%	0%	0%
grade 2 events	30439	32132	28432	29965	33805	99113
	14%	15%	14%	14%	14%	25%
grade 3 events	11399	11515	10931	11274	12212	24056
	5%	5%	5%	5%	5%	6%
grade 4 events	11098	11425	10911	11329	12034	23312
	5%	5%	5%	5%	5%	6%
grade 5 events	1918	1987	1786	1932	2176	6861
	0%	0%	0%	0%	0%	1%
grade 6 events	25473	26032	23654	23780	30842	122159
	12%	12%	11%	11%	13%	31%
grade 7 events	25996	25954	26341	27241	29046	47964
	12%	12%	13%	13%	12%	12%

2.2 Compared Parameters

Parameter	Planned	Actual	Parameter	Planned	Actual
Instrument	ACIS	ACIS	Obspar format version number	6	6
Detector	ACIS-012367	ACIS-012367	Obspar file type	PREDICTED	ACTUAL
Grating	NONE	NONE	Obspar update status	NONE	UPDATED
Data mode	FAINT	FAINT	On-chip summing requested	N	N
Observation mode	SECONDARY	SECONDARY	Subarray requested	NONE	NONE
Pointing RA	0	99.2185121747434	Alternating exposures requested	N	N
Pointing Dec	0	4.978165889728764	Primary exposure time	0.000000	3.2
Pointing Roll	0.0	277.2929549554622			
SIM focus pos (mm)	-0.782348	-0.6828225247311905			
SIM defocus (mm)	0	0.8505141146731063			
SIM translation stage pos (mm)	-233.592463	250.466033080201			
SIM translation stage offset (mm)	0	-0.01005468664627074			
Observation start time	162655068.146983	162655067.12226			
Observation start date	2003-02-26T13:57:48	2003-02-26T13:57:47			
Observation end time	162666662.947471	162666661.92274			
Observation end date	2003-02-26T17:11:03	2003-02-26T17:11:01			
Read mode	TIMED	TIMED			

2.3 Aspect

2.4 Star Slots

2.5 FID Slots

A Summary

A.1 Status

V&V Scientist	Jen Lauer
V&V Date (YYYY-MM-DD)	2006.07.28
V&V Edition	1
V&V Disposition and Status	OK
V&V Charge Time	7.79199997

A.2 Comments