

V&V Reference Report

L2 ASCDS Version : 8.4.5

Observation 60803 - L2 Version 3
Chandra X-Ray Center

L2 Processing Date : Oct 24 2012

Contents

1	Front	2
2	OBI	3
2.1	OBI	3
2.1.1	Images	3
2.1.2	Bias	3
2.1.3	Parameters	4
2.1.4	Events	4
2.2	Compared Parameters	5
2.3	Star Slots	6
2.4	FID Slots	6
A	Summary	7
A.1	Status	7
A.2	Comments	7

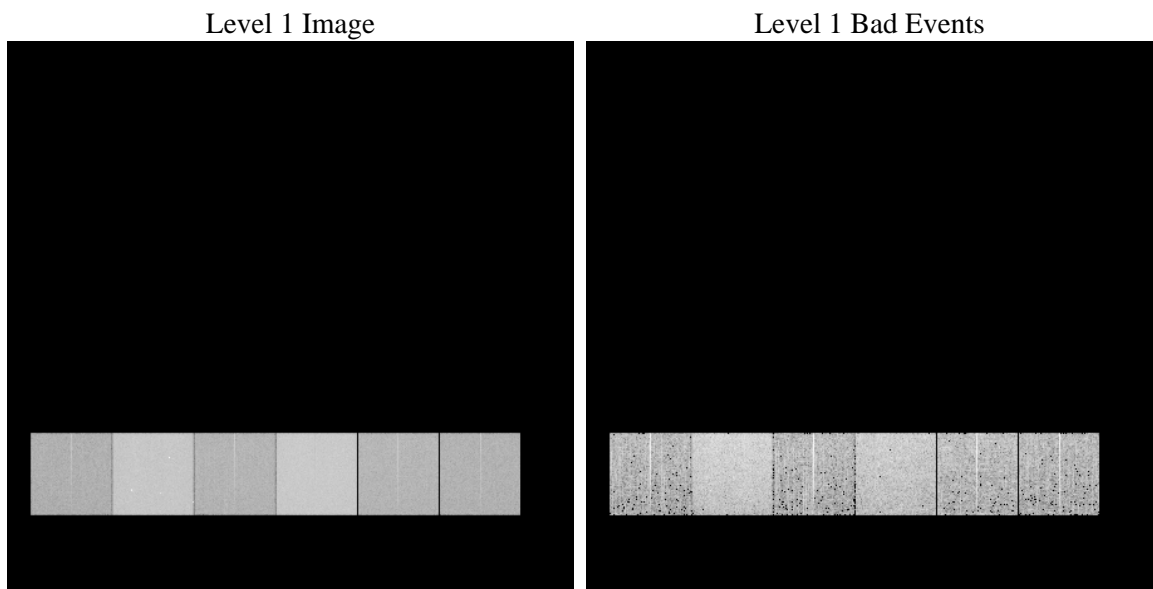
1 Front

seq_num	 	Sequence number
obs_id	60803	Observation id
title	ACIS-456789 diagnostics	Proposal title
observer	CHANDRA engineering request/realtime commanding	Principal investig
object	 	Source name
dtcycle	0	
cycle	P	events from which exps? Prim/Second/Both
ra_targ	0.0	Observer's specified target RA [deg]
dec_targ	0.0	Observer's specified target Dec [deg]
ra_nom	130.3261500351	Nominal RA [deg]
dec_nom	-30.517506230983	Nominal Dec [deg]
roll_nom	289.22541047691	Nominal Roll [deg]
revision	3	Processing version of data
ontime	7785.559030652	Sum of GTIs [s]
livetime	7686.9735943051	Livetime [s]
ontime4	3233.6482992768	Sum of GTIs [s]
ontime5	7782.3180205226	Sum of GTIs [s]
ontime6	3570.672848016	Sum of GTIs [s]
ontime7	7785.559030652	Sum of GTIs [s]
ontime8	3693.913282156	Sum of GTIs [s]
ontime9	3408.4989039004	Sum of GTIs [s]
l2events	1169299	Number of level 2 events

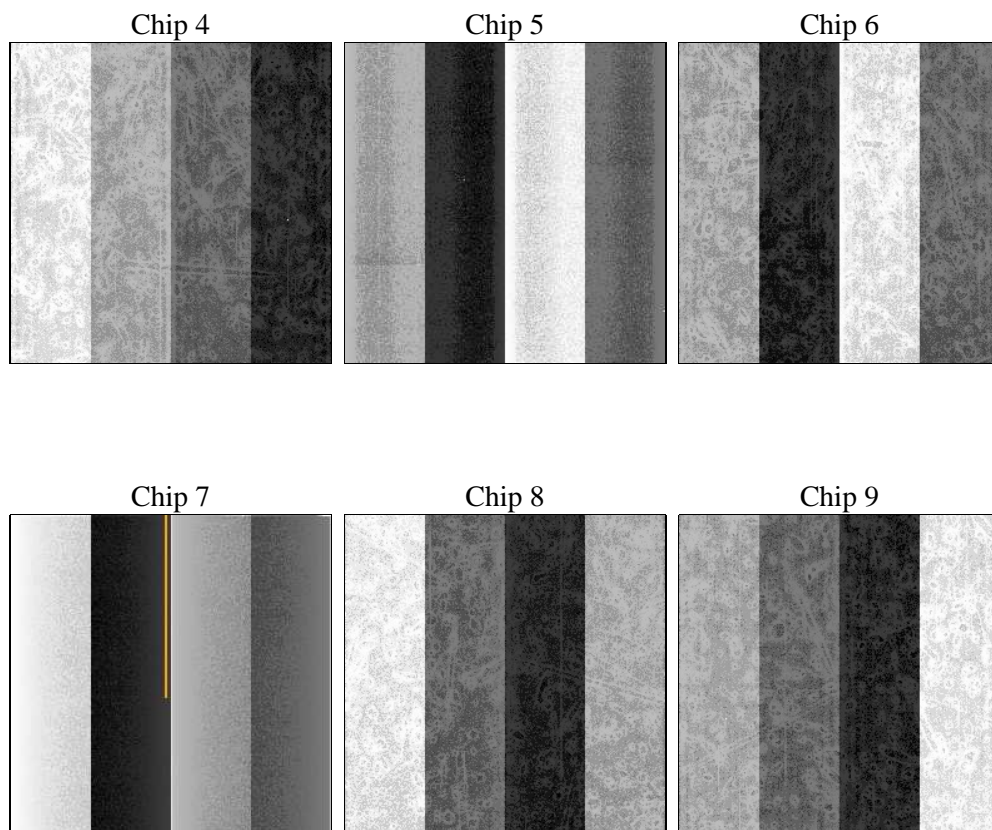
2 OBI

2.1 OBI

2.1.1 Images



2.1.2 Bias



2.1.3 Parameters

obi_num	0	Obi number	sched_exp_time	0.0	[s] Scheduled observation exposure time
ascdsver	8.4.5	Processing system revision	ontime	7785.559030652	Sum of GTIs [s]
caldsver	4.5.2	 	ontime4	3233.6482992768	Sum of GTIs [s]
date	2012-10-25T00:09:52	Date and time of file creation	ontime5	7782.3180205226	Sum of GTIs [s]
revision	3	Processing version of data	ontime6	3570.672848016	Sum of GTIs [s]
			ontime7	7785.559030652	Sum of GTIs [s]
			ontime8	3693.913282156	Sum of GTIs [s]
			ontime9	3408.4989039004	Sum of GTIs [s]
			l1events	1421726	Number of level 1 events

2.1.4 Events

	ccd 4	ccd 5	ccd 6	ccd 7	ccd 8	ccd 9		ccd 4	ccd 5	ccd 6	ccd 7	ccd 8	ccd 9
level 1 events	154471	350270	180541	380685	189321	166438	grade 0 events	74674	72975	84188	85256	88257	78261
rejected events	25350	50940	26550	41727	29030	24698		48%	20%	46%	22%	46%	47%
rejected %	16%	14%	14%	10%	15%	14%	grade 1 events	542	243	398	229	459	450
								0%	0%	0%	0%	0%	0%
							grade 2 events	20795	104490	26718	74822	27804	24259
								13%	29%	14%	19%	14%	14%
							grade 3 events	8603	19562	9427	34664	10348	8880
								5%	5%	5%	9%	5%	5%
							grade 4 events	8483	19452	9537	34017	10209	8893
								5%	5%	5%	8%	5%	5%
							grade 5 events	1516	8971	1846	7919	2063	1835
								0%	2%	1%	2%	1%	1%
							grade 6 events	16566	83072	24121	110230	23673	21463
								10%	23%	13%	28%	12%	12%
							grade 7 events	23292	41505	24306	33548	26508	22397
								15%	11%	13%	8%	14%	13%

2.2 Compared Parameters

Parameter	Planned	Actual	Parameter	Planned	Actual
Instrument	ACIS	ACIS	Obspar format version number	7	7
Detector	ACIS-456789	ACIS-456789	Obspar file type	PREDICTED	ACTUAL
Grating	NONE	NONE	Obspar update status	NONE	UPDATED
Data mode	FAINT	FAINT	On-chip summing requested	N	N
Observation mode	SECONDARY	SECONDARY	Subarray requested	NONE	NONE
[deg] Pointing RA	0	130.3261500350953	Alternating exposures requested	N	N
[deg] Pointing Dec	0	-30.51750623098281	[s] Primary exposure time	0.000000	3.2
[deg] Pointing Roll	0.0	289.2254104769112			
[mm] SIM focus pos	-0.684267	-0.6828225247311905			
[mm] SIM defocus	0	0.8505141146731063			
[mm] SIM translation stage pos	-190.132523	250.466033080201			
[mm] SIM translation stage offset	0	-0.01005468664627074			
[s] Observation start time (MET)	164947173.243509	164947172.21875			
Observation start date	2003-03-25T02:39:33	2003-03-25T02:39:32			
[s] Observation end time (MET)	164958975.094007	164958974.06925			
Observation end date	2003-03-25T05:56:15	2003-03-25T05:56:14			
Read mode	TIMED	TIMED			

2.3 Star Slots

2.4 FID Slots

A Summary

A.1 Status

V&V Scientist	Beth Sundheim
V&V Date (YYYY-MM-DD)	2012.12.03
V&V Edition	1
V&V Disposition and Status	OK
V&V Charge Time	7.785559030652

A.2 Comments