

V&V Reference Report

L2 ASCDS Version : 8.4.5

Observation 60801 - L2 Version 3
Chandra X-Ray Center

L2 Processing Date : Oct 24 2012

Contents

1	Front	2
2	OBI	3
2.1	OBI	3
2.1.1	Images	3
2.1.2	Bias	3
2.1.3	Parameters	4
2.1.4	Events	4
2.2	Compared Parameters	5
2.3	Star Slots	6
2.4	FID Slots	6
A	Summary	7
A.1	Status	7
A.2	Comments	7

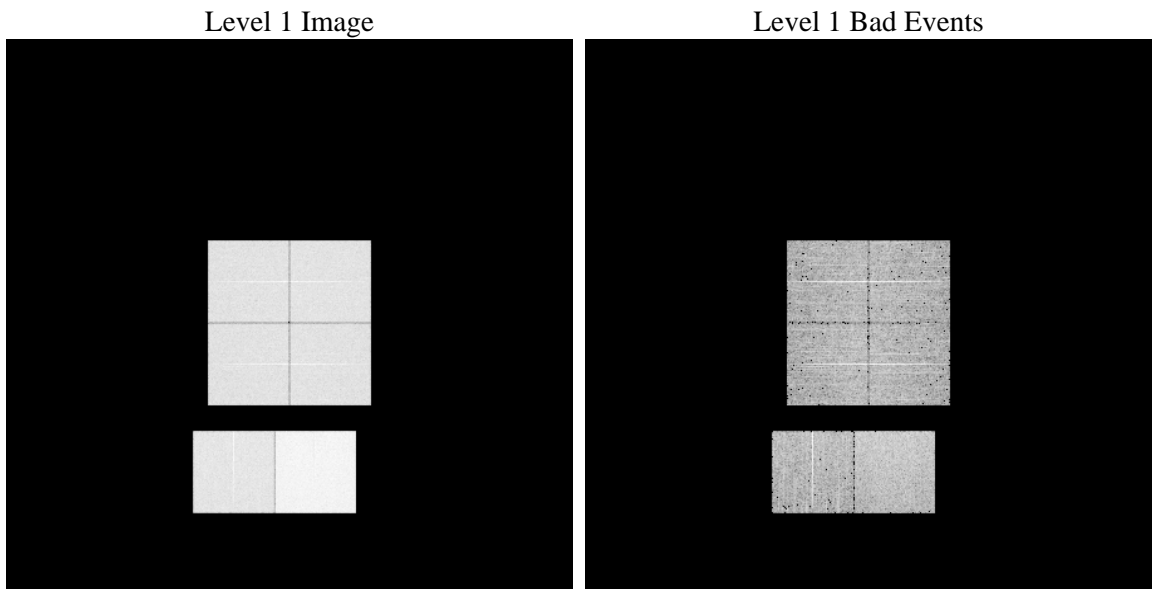
1 Front

seq_num	 	Sequence number
obs_id	60801	Observation id
title	ACIS-012367 diagnostics	Proposal title
observer	CHANDRA engineering request/realtime commanding	Principal investig
object	 	Source name
dtcycle	0	
cycle	P	events from which exps? Prim/Second/Both
ra_targ	0.0	Observer's specified target RA [deg]
dec_targ	0.0	Observer's specified target Dec [deg]
ra_nom	98.014859809788	Nominal RA [deg]
dec_nom	-0.42447335997209	Nominal Dec [deg]
roll_nom	268.30660292861	Nominal Roll [deg]
revision	3	Processing version of data
ontime	8451.1999685168	Sum of GTIs [s]
livetime	8344.1857858138	Livetime [s]
ontime0	4662.5049255192	Sum of GTIs [s]
ontime1	4821.3135738075	Sum of GTIs [s]
ontime2	4529.6248553693	Sum of GTIs [s]
ontime3	4571.7568816841	Sum of GTIs [s]
ontime6	4983.3624342382	Sum of GTIs [s]
ontime7	8451.1999685168	Sum of GTIs [s]
l2events	1276916	Number of level 2 events

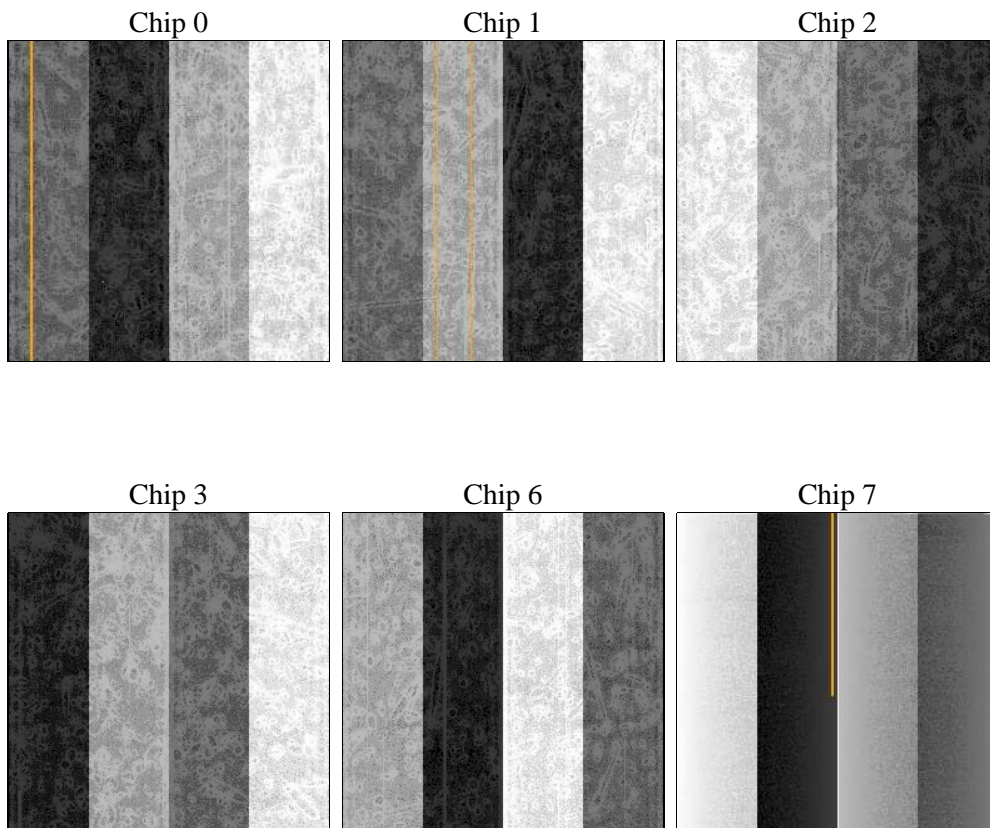
2 OBI

2.1 OBI

2.1.1 Images



2.1.2 Bias



2.1.3 Parameters

obi_num	0	Obi number	sched_exp_time	0.0	[s] Scheduled observation exposure time
ascdsver	8.4.5	Processing system revision	ontime	8451.1999685168	Sum of GTIs [s]
caldbver	4.5.2	 	ontime0	4662.5049255192	Sum of GTIs [s]
date	2012-10-25T00:21:42	Date and time of file creation	ontime1	4821.3135738075	Sum of GTIs [s]
revision	3	Processing version of data	ontime2	4529.6248553693	Sum of GTIs [s]
			ontime3	4571.7568816841	Sum of GTIs [s]
			ontime6	4983.3624342382	Sum of GTIs [s]
			ontime7	8451.1999685168	Sum of GTIs [s]
			l1events	1542887	Number of level 1 events

2.1.4 Events

	ccd 0	ccd 1	ccd 2	ccd 3	ccd 6	ccd 7		ccd 0	ccd 1	ccd 2	ccd 3	ccd 6	ccd 7
level 1 events	220361	226810	218168	220431	247672	409445	grade 0 events	104014	107825	104160	106008	116375	91121
rejected events	31361	30950	32384	32051	34789	45850		47%	47%	47%	48%	46%	22%
rejected %	14%	13%	14%	14%	14%	11%	grade 1 events	581	550	589	615	575	219
								0%	0%	0%	0%	0%	0%
							grade 2 events	33095	34628	31541	32153	36687	80641
								15%	15%	14%	14%	14%	19%
							grade 3 events	12298	12390	11997	12360	13266	36930
								5%	5%	5%	5%	5%	9%
							grade 4 events	12270	12575	12161	12274	13027	36740
								5%	5%	5%	5%	5%	8%
							grade 5 events	2233	2167	2066	2257	2481	8734
								1%	0%	0%	1%	1%	2%
							grade 6 events	27603	28723	25925	25852	33797	118708
								12%	12%	11%	11%	13%	28%
							grade 7 events	28267	27952	29729	28912	31464	36352
								12%	12%	13%	13%	12%	8%

2.2 Compared Parameters

Parameter	Planned	Actual
Instrument	ACIS	ACIS
Detector	ACIS-012367	ACIS-012367
Grating	NONE	NONE
Data mode	FAINT	FAINT
Observation mode	SECONDARY	SECONDARY
[deg] Pointing RA	0	98.01485980978831
[deg] Pointing Dec	0	-0.4244733599720921
[deg] Pointing Roll	0.0	268.3066029286077
[mm] SIM focus pos	-0.782348	-0.6828225247311905
[mm] SIM defocus	0	0.8505141146731063
[mm] SIM translation stage pos	-233.592463	250.466033080201
[mm] SIM translation stage offset	0	-0.01005468664627074
[s] Observation start time (MET)	164990975.595304	164990974.5706
Observation start date	2003-03-25T14:49:36	2003-03-25T14:49:34
[s] Observation end time (MET)	165002597.045793	165002596.02109
Observation end date	2003-03-25T18:03:17	2003-03-25T18:03:16
Read mode	TIMED	TIMED

Parameter	Planned	Actual
Obspar format version number	7	7
Obspar file type	PREDICTED	ACTUAL
Obspar update status	NONE	UPDATED
On-chip summing requested	N	N
Subarray requested	NONE	NONE
Alternating exposures requested	N	N
[s] Primary exposure time	0.000000	3.2

2.3 Star Slots

2.4 FID Slots

A Summary

A.1 Status

V&V Scientist	Beth Sundheim
V&V Date (YYYY-MM-DD)	2012.12.04
V&V Edition	1
V&V Disposition and Status	OK
V&V Charge Time	8.4511999685168

A.2 Comments