

V&V Reference Report

L2 ASCDS Version : 8.4.5

Observation 60795 - L2 Version 3
Chandra X-Ray Center

L2 Processing Date : Oct 25 2012

Contents

1	Front	2
2	OBI	3
2.1	OBI	3
2.1.1	Images	3
2.1.2	Bias	3
2.1.3	Parameters	4
2.1.4	Events	4
2.2	Compared Parameters	5
2.3	Star Slots	6
2.4	FID Slots	6
A	Summary	7
A.1	Status	7
A.2	Comments	7

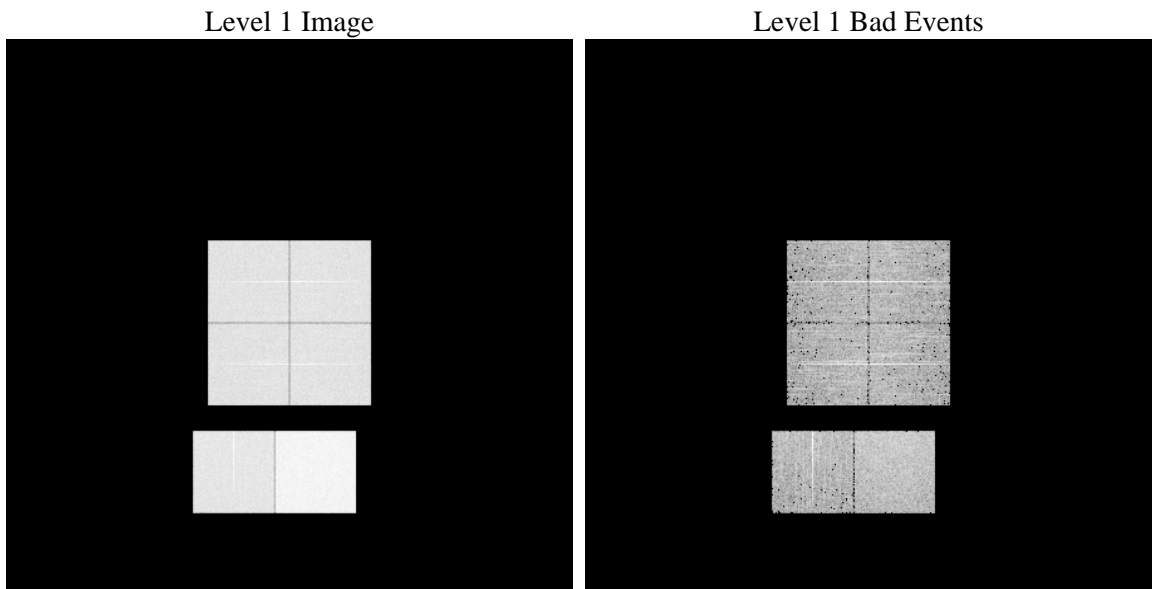
1 Front

seq_num	 	Sequence number
obs_id	60795	Observation id
title	ACIS-012367 diagnostics	Proposal title
observer	CHANDRA engineering request/realtime commanding	Principal investig
object	 	Source name
dtcycle	0	
cycle	P	events from which exps? Prim/Second/Both
ra_targ	0.0	Observer's specified target RA [deg]
dec_targ	0.0	Observer's specified target Dec [deg]
ra_nom	89.938158266427	Nominal RA [deg]
dec_nom	61.977667897342	Nominal Dec [deg]
roll_nom	275.87753597406	Nominal Roll [deg]
revision	3	Processing version of data
ontime	7795.1999709606	Sum of GTIs [s]
livetime	7696.4924552224	Livetime [s]
ontime0	4346.138450861	Sum of GTIs [s]
ontime1	4365.6252328753	Sum of GTIs [s]
ontime2	4158.2386814952	Sum of GTIs [s]
ontime3	4216.4163548648	Sum of GTIs [s]
ontime6	4605.4961242676	Sum of GTIs [s]
ontime7	7795.1999709606	Sum of GTIs [s]
l2events	1184088	Number of level 2 events

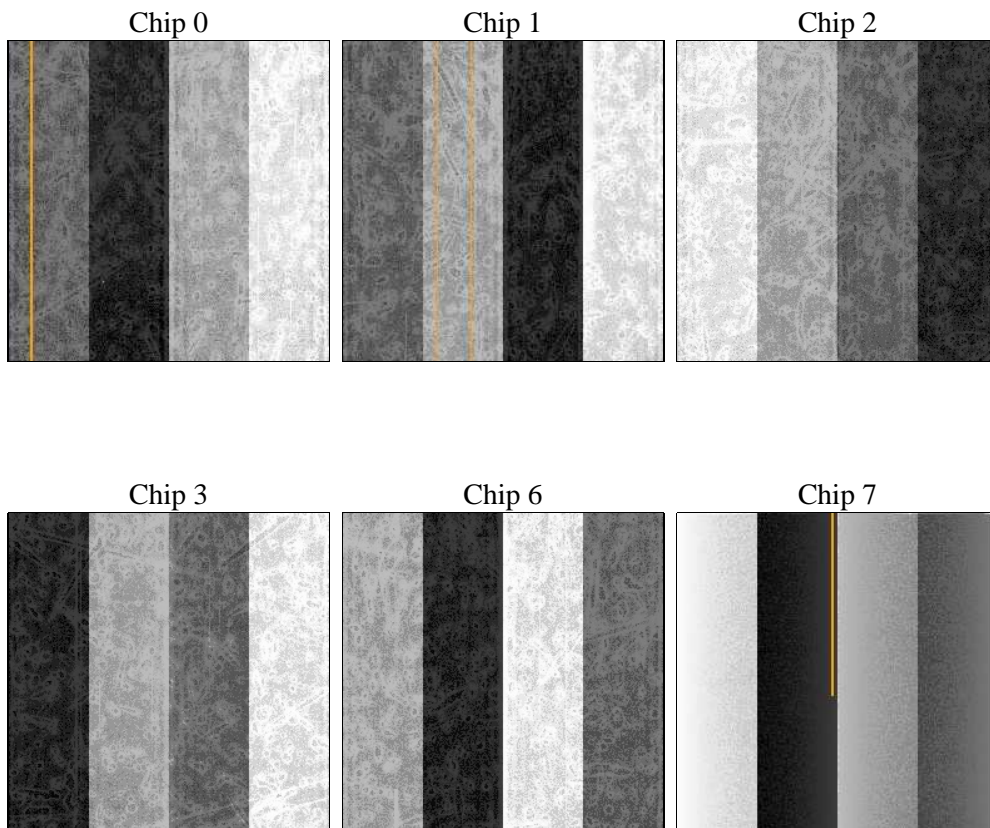
2 OBI

2.1 OBI

2.1.1 Images



2.1.2 Bias



2.1.3 Parameters

obi_num	1	Obi number	sched_exp_time	0.0	[s] Scheduled observation exposure time
ascdsver	8.4.5	Processing system revision	ontime	7795.1999709606	Sum of GTIs [s]
caldsver	4.5.2	 	ontime0	4346.138450861	Sum of GTIs [s]
date	2012-10-25T14:57:14	Date and time of file creation	ontime1	4365.6252328753	Sum of GTIs [s]
revision	3	Processing version of data	ontime2	4158.2386814952	Sum of GTIs [s]
			ontime3	4216.4163548648	Sum of GTIs [s]
			ontime6	4605.4961242676	Sum of GTIs [s]
			ontime7	7795.1999709606	Sum of GTIs [s]
			l1events	1426018	Number of level 1 events

2.1.4 Events

	ccd 0	ccd 1	ccd 2	ccd 3	ccd 6	ccd 7		ccd 0	ccd 1	ccd 2	ccd 3	ccd 6	ccd 7
level 1 events	205401	208126	201032	204079	230328	377052	grade 0 events	97790	97915	96817	98099	108172	84259
rejected events	27658	30032	28618	29300	31403	40757		47%	47%	48%	48%	46%	22%
rejected %	13%	14%	14%	14%	13%	10%	grade 1 events	530	460	564	574	557	251
								0%	0%	0%	0%	0%	0%
							grade 2 events	31187	31303	29036	29970	33994	74233
								15%	15%	14%	14%	14%	19%
							grade 3 events	11456	11393	11294	11198	12565	34136
								5%	5%	5%	5%	5%	9%
							grade 4 events	11446	11254	11176	11514	12511	33667
								5%	5%	5%	5%	5%	8%
							grade 5 events	1986	1975	1880	2054	2278	7676
								0%	0%	0%	1%	0%	2%
							grade 6 events	25864	26229	24091	23998	31683	110142
								12%	12%	11%	11%	13%	29%
							grade 7 events	25142	27597	26174	26672	28568	32688
								12%	13%	13%	13%	12%	8%

2.2 Compared Parameters

Parameter	Planned	Actual	Parameter	Planned	Actual
Instrument	ACIS	ACIS	Obspar format version number	7	7
Detector	ACIS-012367	ACIS-012367	Obspar file type	PREDICTED	ACTUAL
Grating	NONE	NONE	Obspar update status	NONE	UPDATED
Data mode	FAINT	FAINT	On-chip summing requested	N	N
Observation mode	SECONDARY	SECONDARY	Subarray requested	NONE	NONE
[deg] Pointing RA	0	89.93815826642725	Alternating exposures requested	N	N
[deg] Pointing Dec	0	61.97766789734221	[s] Primary exposure time	0.000000	3.2
[deg] Pointing Roll	0.0	275.8775359740553			
[mm] SIM focus pos	-0.782348	-0.6828225247311905			
[mm] SIM defocus	0	0.8505141146731063			
[mm] SIM translation stage pos	-233.592463	250.466033080201			
[mm] SIM translation stage offset	0	-0.01005468664627074			
[s] Observation start time (MET)	165396246.262394	165396245.23768			
Observation start date	2003-03-30T07:24:06	2003-03-30T07:24:05			
[s] Observation end time (MET)	165407363.412863	165407362.38815			
Observation end date	2003-03-30T10:29:23	2003-03-30T10:29:22			
Read mode	TIMED	TIMED			

2.3 Star Slots

2.4 FID Slots

A Summary

A.1 Status

V&V Scientist	Beth Sundheim
V&V Date (YYYY-MM-DD)	2012.12.04
V&V Edition	1
V&V Disposition and Status	OK
V&V Charge Time	7.7951999709606

A.2 Comments