

V&V Reference Report

L2 ASCDS Version : 8.4.5

Observation 60787 - L2 Version 3
Chandra X-Ray Center

L2 Processing Date : Oct 26 2012

Contents

1	Front	2
2	OBI	3
2.1	OBI	3
2.1.1	Images	3
2.1.2	Bias	3
2.1.3	Parameters	4
2.1.4	Events	4
2.2	Compared Parameters	5
2.3	Star Slots	6
2.4	FID Slots	6
A	Summary	7
A.1	Status	7
A.2	Comments	7

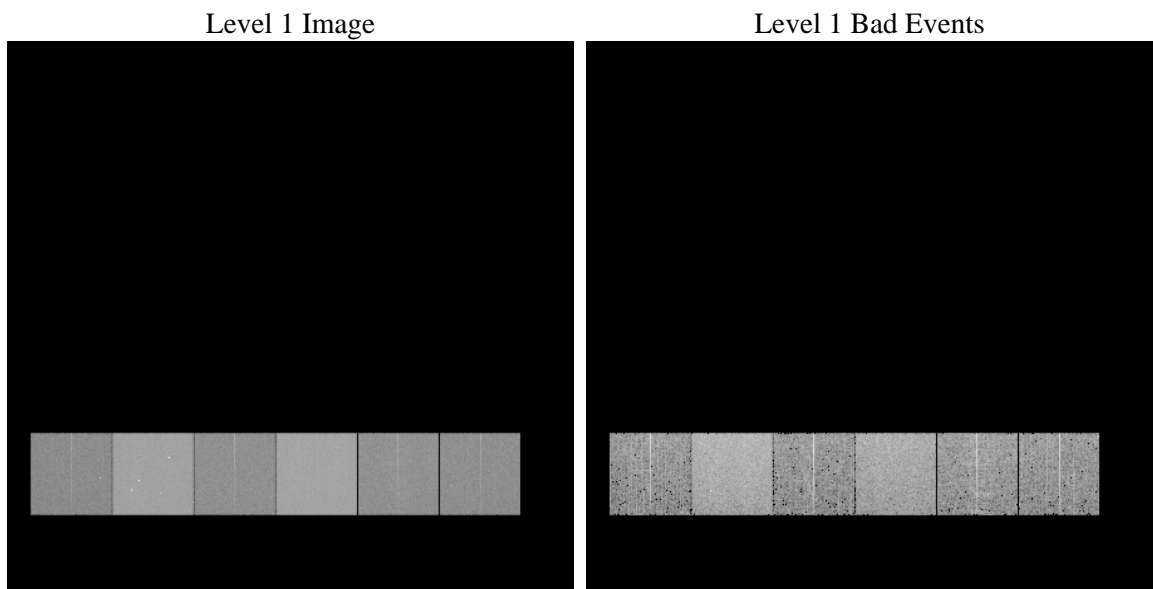
1 Front

seq_num	 	Sequence number
obs_id	60787	Observation id
title	ACIS-456789 diagnostics	Proposal title
observer	CHANDRA engineering request/realtime commanding	Principal investig
object	 	Source name
dtcycle	0	
cycle	P	events from which exps? Prim/Second/Both
ra_targ	0.0	Observer's specified target RA [deg]
dec_targ	0.0	Observer's specified target Dec [deg]
ra_nom	224.97363597165	Nominal RA [deg]
dec_nom	14.012801013899	Nominal Dec [deg]
roll_nom	120.4830792288	Nominal Roll [deg]
revision	3	Processing version of data
ontime	8374.3999688029	Sum of GTIs [s]
livetime	8268.3582739397	Livetime [s]
ontime4	3564.2888398468	Sum of GTIs [s]
ontime5	8374.3999688029	Sum of GTIs [s]
ontime6	3953.7025970519	Sum of GTIs [s]
ontime7	8374.3999688029	Sum of GTIs [s]
ontime8	4043.9998843074	Sum of GTIs [s]
ontime9	3855.8169749081	Sum of GTIs [s]
l2events	1248104	Number of level 2 events

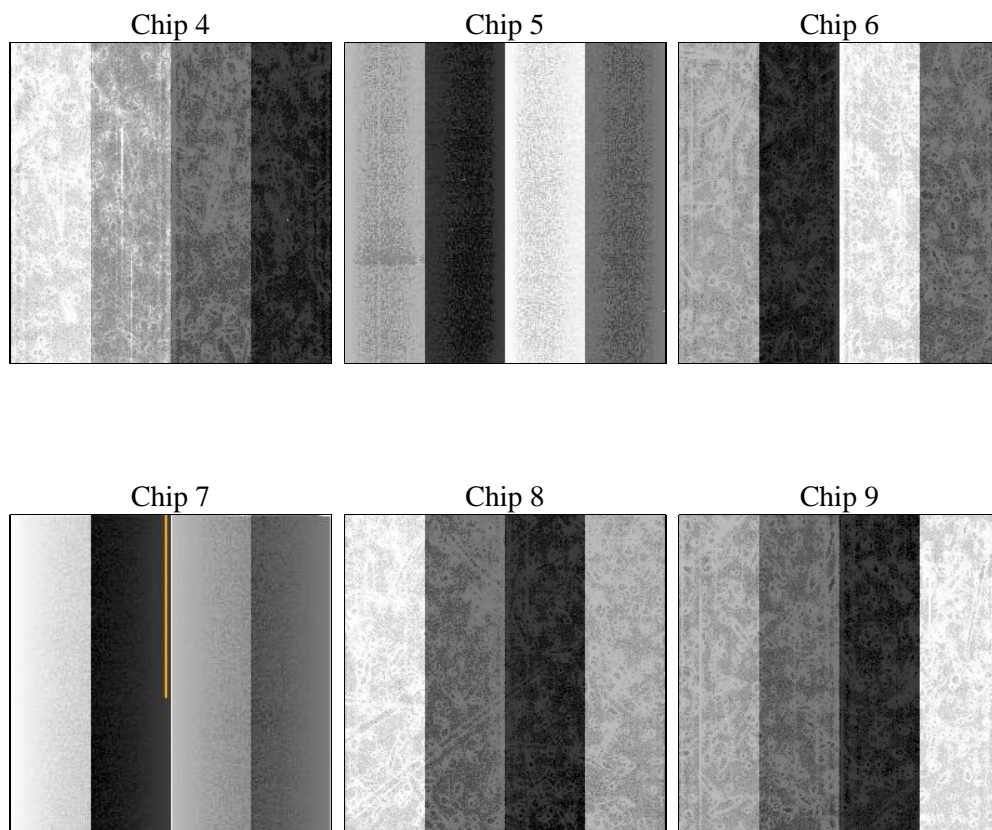
2 OBI

2.1 OBI

2.1.1 Images



2.1.2 Bias



2.1.3 Parameters

obi_num	0	Obi number	sched_exp_time	0.0	[s] Scheduled observation exposure time
ascdsver	8.4.5	Processing system revision	ontime	8374.3999688029	Sum of GTIs [s]
caldbver	4.5.2	 	ontime4	3564.2888398468	Sum of GTIs [s]
date	2012-10-26T11:54:59	Date and time of file creation	ontime5	8374.3999688029	Sum of GTIs [s]
revision	3	Processing version of data	ontime6	3953.7025970519	Sum of GTIs [s]
			ontime7	8374.3999688029	Sum of GTIs [s]
			ontime8	4043.9998843074	Sum of GTIs [s]
			ontime9	3855.8169749081	Sum of GTIs [s]
			l1events	1540330	Number of level 1 events

2.1.4 Events

	ccd 4	ccd 5	ccd 6	ccd 7	ccd 8	ccd 9		ccd 4	ccd 5	ccd 6	ccd 7	ccd 8	ccd 9
level 1 events	168444	376354	196430	406327	206348	186427	grade 0 events	81285	76746	92227	90485	95346	88174
rejected events	28988	59121	29196	48107	33959	29195		48%	20%	46%	22%	46%	47%
rejected %	17%	15%	14%	11%	16%	15%	grade 1 events	573	232	465	250	461	488
								0%	0%	0%	0%	0%	0%
							grade 2 events	22507	114532	29312	80509	30350	27052
								13%	30%	14%	19%	14%	14%
							grade 3 events	9347	19910	10476	36294	11264	10020
								5%	5%	5%	8%	5%	5%
							grade 4 events	9350	19295	10375	36431	11244	9956
								5%	5%	5%	8%	5%	5%
							grade 5 events	1664	9785	1963	8562	2326	2112
								0%	2%	0%	2%	1%	1%
							grade 6 events	17943	90083	26490	118199	25757	23584
								10%	23%	13%	29%	12%	12%
							grade 7 events	25775	45771	25122	35597	29600	25041
								15%	12%	12%	8%	14%	13%

2.2 Compared Parameters

Parameter	Planned	Actual
Instrument	ACIS	ACIS
Detector	ACIS-456789	ACIS-456789
Grating	NONE	NONE
Data mode	FAINT	FAINT
Observation mode	SECONDARY	SECONDARY
[deg] Pointing RA	0	224.9736359716453
[deg] Pointing Dec	0	14.01280101389879
[deg] Pointing Roll	0.0	120.4830792288005
[mm] SIM focus pos	-0.684267	-0.7809083437167272
[mm] SIM defocus	0	0.7524282956875696
[mm] SIM translation stage pos	-190.132523	250.466033080201
[mm] SIM translation stage offset	0	-0.01005468664627074
[s] Observation start time (MET)	165890659.133241	165890658.10854
Observation start date	2003-04-05T00:44:19	2003-04-05T00:44:18
[s] Observation end time (MET)	165911968.884139	165911967.85944
Observation end date	2003-04-05T06:39:29	2003-04-05T06:39:27
Read mode	TIMED	TIMED

Parameter	Planned	Actual
Obspar format version number	7	7
Obspar file type	PREDICTED	ACTUAL
Obspar update status	NONE	UPDATED
On-chip summing requested	N	N
Subarray requested	NONE	NONE
Alternating exposures requested	N	N
[s] Primary exposure time	0.000000	3.2

2.3 Star Slots

2.4 FID Slots

A Summary

A.1 Status

V&V Scientist	Beth Sundheim
V&V Date (YYYY-MM-DD)	2012.12.04
V&V Edition	1
V&V Disposition and Status	OK
V&V Charge Time	8.3743999688029

A.2 Comments