

V&V Reference Report

L2 ASCDS Version : 7.6.8

Observation 60786 - L2 Version 001
Chandra X-Ray Center

L2 Processing Date : Jul 30 2006

Contents

1	Front	2
2	OBI	3
2.1	OBI	3
2.1.1	Images	3
2.1.2	Bias	3
2.1.3	Parameters	4
2.1.4	Events	4
2.2	Compared Parameters	5
2.3	Aspect	6
2.4	Star Slots	8
2.5	FID Slots	8
A	Summary	9
A.1	Status	9
A.2	Comments	9

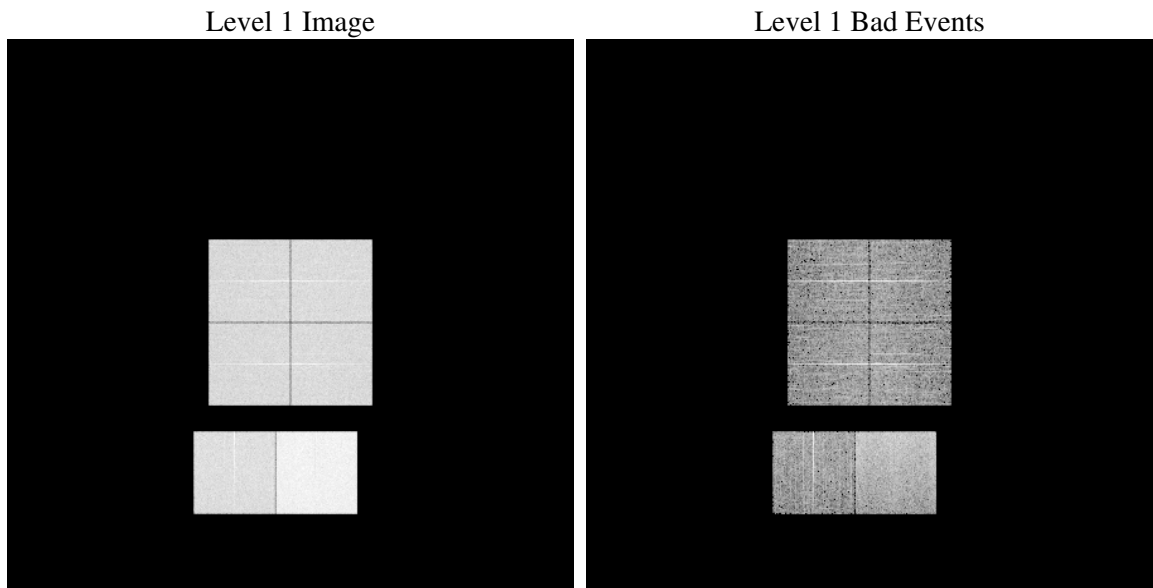
1 Front

seq_num	
obs_id	60786
title	ACIS-012367 diagnostics
observer	CHANDRA engineering request/realtime commanding
object	
dtcycle	0
cycle	P
ra_targ	0.0
dec_targ	0.0
ra_nom	139.03231766391
dec_nom	-45.017087771955
roll_nom	290.19084364388
revision	2
ontime	7791.5242280066
livetime	7692.8632567389
ontime0	4239.4598913789
ontime1	4485.8149397671
ontime2	4171.480181247
ontime3	4239.3763868809
ontime6	4605.8142342269
ontime7	7791.5242280066
l2events	1166191

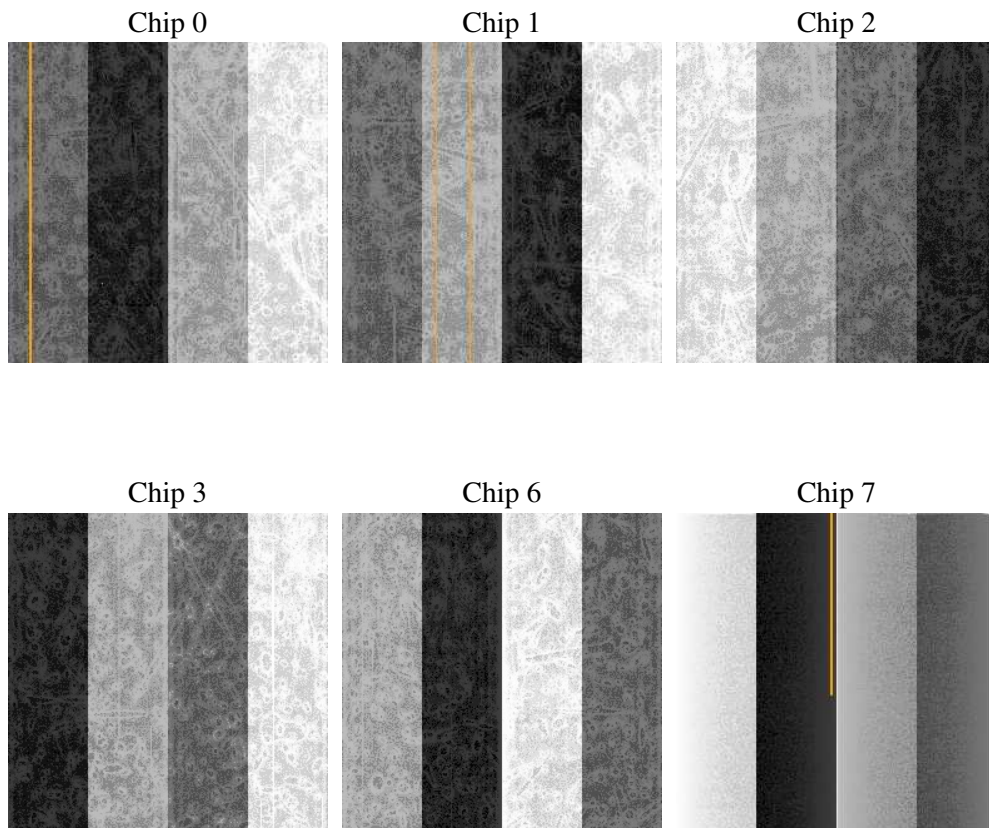
2 OBI

2.1 OBI

2.1.1 Images



2.1.2 Bias



2.1.3 Parameters

obi_num	0
ascdsver	7.6.8
caldsver	3.2.2
date	2006-07-30T12:17:35
revision	2

sched_exp_time	0.0
ontime	7794.6102589071
ontime0	4242.5048822761
ontime1	4488.818890661
ontime2	4174.4430921376
ontime3	4242.5034577847
ontime6	4608.736105144
ontime7	7794.6102589071
l1events	1424595

2.1.4 Events

	ccd 0	ccd 1	ccd 2	ccd 3	ccd 6	ccd 7
level 1 events	202000	211161	200630	206316	229373	375115
rejected events	29016	28888	29542	30835	31956	54020
rejected %	14%	13%	14%	14%	13%	14%

	ccd 0	ccd 1	ccd 2	ccd 3	ccd 6	ccd 7
grade 0 events	95545	100641	96503	98989	107517	57124
	47%	47%	48%	47%	46%	15%
grade 1 events	548	509	585	595	537	152
	0%	0%	0%	0%	0%	0%
grade 2 events	29924	32120	28938	29927	34068	97277
	14%	15%	14%	14%	14%	25%
grade 3 events	11128	11625	11232	11314	12357	23422
	5%	5%	5%	5%	5%	6%
grade 4 events	11223	11435	11066	11332	12127	23158
	5%	5%	5%	5%	5%	6%
grade 5 events	1950	2112	1822	2120	2267	6884
	0%	1%	0%	1%	0%	1%
grade 6 events	25289	26582	23475	24049	31489	120253
	12%	12%	11%	11%	13%	32%
grade 7 events	26393	26137	27009	27990	29011	46845
	13%	12%	13%	13%	12%	12%

2.2 Compared Parameters

Parameter	Planned	Actual	Parameter	Planned	Actual
Instrument	ACIS	ACIS	Obspar format version number	6	6
Detector	ACIS-012367	ACIS-012367	Obspar file type	PREDICTED	ACTUAL
Grating	NONE	NONE	Obspar update status	NONE	UPDATED
Data mode	FAINT	FAINT	On-chip summing requested	N	N
Observation mode	SECONDARY	SECONDARY	Subarray requested	NONE	NONE
Pointing RA	0	139.0323176639133	Alternating exposures requested	N	N
Pointing Dec	0	-45.017087771955	Primary exposure time	0.000000	3.2
Pointing Roll	0.0	290.1908436438787			
SIM focus pos (mm)	-0.782348	-0.7809083437167272			
SIM defocus (mm)	0	0.7524282956875696			
SIM translation stage pos (mm)	-233.592463	250.466033080201			
SIM translation stage offset (mm)	0	-0.01005468664627074			
Observation start time	166082108.641314	166082107.61662			
Observation start date	2003-04-07T05:55:09	2003-04-07T05:55:07			
Observation end time	166093711.641803	166093710.61711			
Observation end date	2003-04-07T09:08:32	2003-04-07T09:08:30			
Read mode	TIMED	TIMED			

2.3 Aspect

2.4 Star Slots

2.5 FID Slots

A Summary

A.1 Status

V&V Scientist	Jen Lauer
V&V Date (YYYY-MM-DD)	2006.07.30
V&V Edition	1
V&V Disposition and Status	OK
V&V Charge Time	7.79152422

A.2 Comments