

V&V Reference Report

L2 ASCDS Version : 8.4.5

Observation 60781 - L2 Version 3
Chandra X-Ray Center

L2 Processing Date : Oct 26 2012

Contents

1	Front	2
2	OBI	3
2.1	OBI	3
2.1.1	Images	3
2.1.2	Bias	3
2.1.3	Parameters	4
2.1.4	Events	4
2.2	Compared Parameters	5
2.3	Star Slots	6
2.4	FID Slots	6
A	Summary	7
A.1	Status	7
A.2	Comments	7

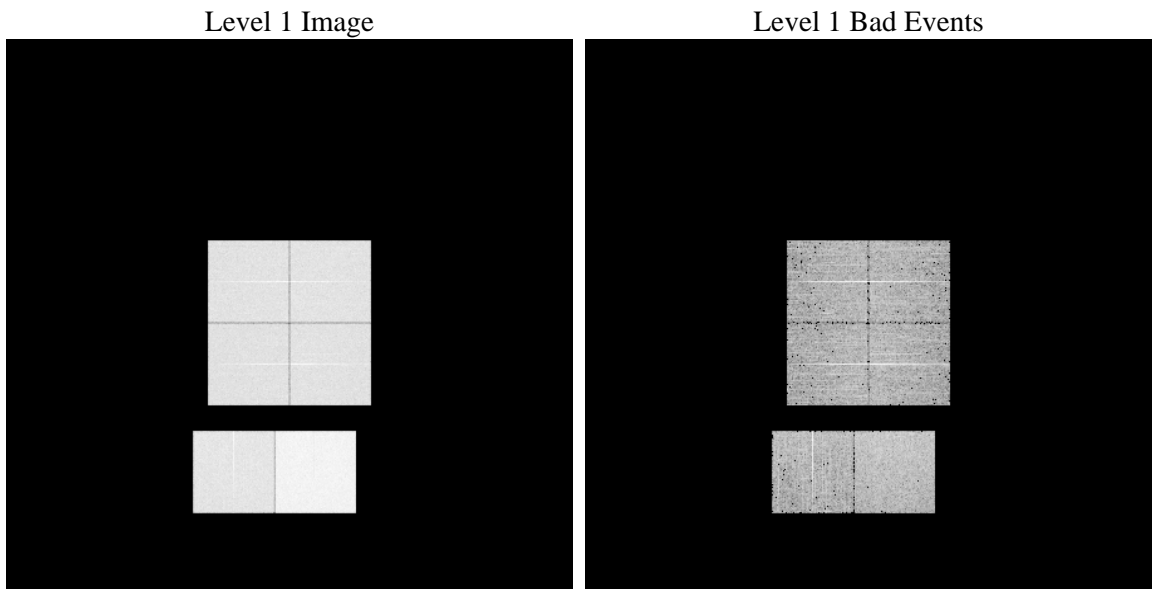
1 Front

seq_num	 	Sequence number
obs_id	60781	Observation id
title	ACIS-012367 diagnostics	Proposal title
observer	CHANDRA engineering request/realtime commanding	Principal investig
object	 	Source name
dtcycle	0	
cycle	P	events from which exps? Prim/Second/Both
ra_targ	0.0	Observer's specified target RA [deg]
dec_targ	0.0	Observer's specified target Dec [deg]
ra_nom	225.9090348094	Nominal RA [deg]
dec_nom	-41.672215944906	Nominal Dec [deg]
roll_nom	43.474436716855	Nominal Roll [deg]
revision	3	Processing version of data
ontime	8462.7655769289	Sum of GTIs [s]
livetime	8355.6049435281	Livetime [s]
ontime0	4809.6823132336	Sum of GTIs [s]
ontime1	4933.260668695	Sum of GTIs [s]
ontime2	4563.7465984523	Sum of GTIs [s]
ontime3	4683.284542948	Sum of GTIs [s]
ontime6	5114.3347042203	Sum of GTIs [s]
ontime7	8462.7655769289	Sum of GTIs [s]
l2events	1284530	Number of level 2 events

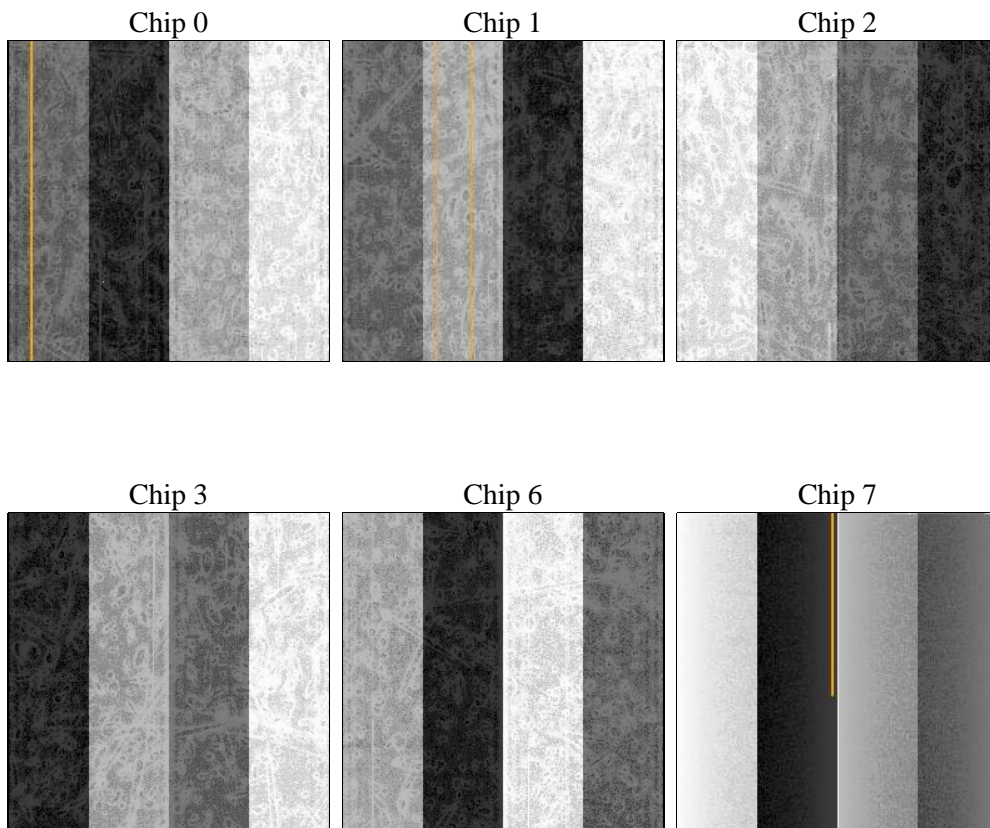
2 OBI

2.1 OBI

2.1.1 Images



2.1.2 Bias



2.1.3 Parameters

obi_num	0	Obi number	sched_exp_time	0.0	[s] Scheduled observation exposure time
ascdsver	8.4.5	Processing system revision	ontime	8462.7655769289	Sum of GTIs [s]
caldbver	4.5.2	 	ontime0	4809.6823132336	Sum of GTIs [s]
date	2012-10-26T15:39:50	Date and time of file creation	ontime1	4933.260668695	Sum of GTIs [s]
revision	3	Processing version of data	ontime2	4563.7465984523	Sum of GTIs [s]
			ontime3	4683.284542948	Sum of GTIs [s]
			ontime6	5114.3347042203	Sum of GTIs [s]
			ontime7	8462.7655769289	Sum of GTIs [s]
			l1events	1543702	Number of level 1 events

2.1.4 Events

	ccd 0	ccd 1	ccd 2	ccd 3	ccd 6	ccd 7		ccd 0	ccd 1	ccd 2	ccd 3	ccd 6	ccd 7
level 1 events	224300	228857	216576	222147	249736	402086	grade 0 events	106789	109081	104453	107653	117285	90106
rejected events	30821	30875	30876	31450	34052	42682		47%	47%	48%	48%	46%	22%
rejected %	13%	13%	14%	14%	13%	10%	grade 1 events	574	495	592	636	524	203
								0%	0%	0%	0%	0%	0%
							grade 2 events	33705	34987	31448	32594	37265	79430
								15%	15%	14%	14%	14%	19%
							grade 3 events	12457	12592	12102	12450	13413	36576
								5%	5%	5%	5%	5%	9%
							grade 4 events	12471	12685	12003	12349	13424	36100
								5%	5%	5%	5%	5%	8%
							grade 5 events	2106	2264	1919	2232	2473	8259
								0%	0%	0%	1%	0%	2%
							grade 6 events	28057	28758	25832	25651	34297	117344
								12%	12%	11%	11%	13%	29%
							grade 7 events	28141	27995	28227	28582	31055	34068
								12%	12%	13%	12%	12%	8%

2.2 Compared Parameters

Parameter	Planned	Actual	Parameter	Planned	Actual
Instrument	ACIS	ACIS	Obspar format version number	7	7
Detector	ACIS-012367	ACIS-012367	Obspar file type	PREDICTED	ACTUAL
Grating	NONE	NONE	Obspar update status	NONE	UPDATED
Data mode	FAINT	FAINT	On-chip summing requested	N	N
Observation mode	SECONDARY	SECONDARY	Subarray requested	NONE	NONE
[deg] Pointing RA	0	225.9090348093974	Alternating exposures requested	N	N
[deg] Pointing Dec	0	-41.6722159449063	[s] Primary exposure time	0.000000	3.2
[deg] Pointing Roll	0.0	43.47443671685479			
[mm] SIM focus pos	-0.782348	-0.7809083437167272			
[mm] SIM defocus	0	0.7524282956875696			
[mm] SIM translation stage pos	-233.592463	250.466033080201			
[mm] SIM translation stage offset	0	-0.01005468664627074			
[s] Observation start time (MET)	166343155.652361	166343154.62764			
Observation start date	2003-04-10T06:25:56	2003-04-10T06:25:54			
[s] Observation end time (MET)	166372983.153621	166372982.1289			
Observation end date	2003-04-10T14:43:03	2003-04-10T14:43:02			
Read mode	TIMED	TIMED			

2.3 Star Slots

2.4 FID Slots

A Summary

A.1 Status

V&V Scientist	Beth Sundheim
V&V Date (YYYY-MM-DD)	2012.12.06
V&V Edition	1
V&V Disposition and Status	OK
V&V Charge Time	8.4627655769289

A.2 Comments