

V&V Reference Report

L2 ASCDS Version : 8.4.5

Observation 60756 - L2 Version 3
Chandra X-Ray Center

L2 Processing Date : Oct 26 2012

Contents

1	Front	2
2	OBI	3
2.1	OBI	3
2.1.1	Images	3
2.1.2	Bias	3
2.1.3	Parameters	4
2.1.4	Events	4
2.2	Compared Parameters	5
2.3	Star Slots	6
2.4	FID Slots	6
A	Summary	7
A.1	Status	7
A.2	Comments	7

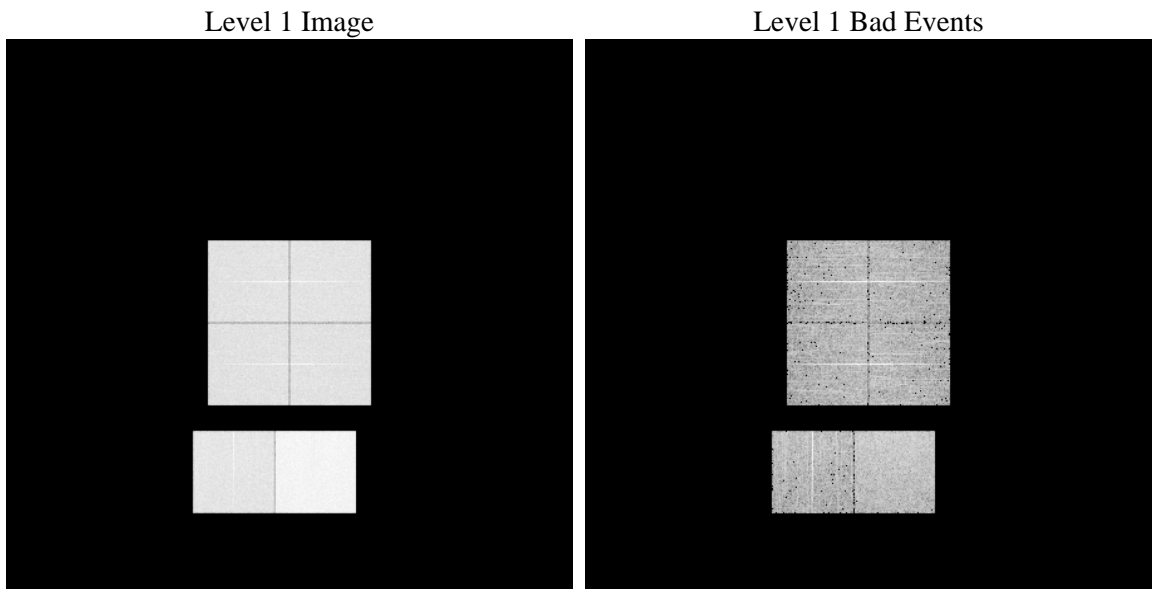
1 Front

seq_num	 	Sequence number
obs_id	60756	Observation id
title	ACIS-012367 diagnostics	Proposal title
observer	CHANDRA engineering request/realtime commanding	Principal investig
object	 	Source name
dtcycle	0	
cycle	P	events from which exps? Prim/Second/Both
ra_targ	0.0	Observer's specified target RA [deg]
dec_targ	0.0	Observer's specified target Dec [deg]
ra_nom	228.03551260261	Nominal RA [deg]
dec_nom	-58.97802005996	Nominal Dec [deg]
roll_nom	17.331454003361	Nominal Roll [deg]
revision	3	Processing version of data
ontime	7795.1999709606	Sum of GTIs [s]
livetime	7696.4924552224	Livetime [s]
ontime0	4342.8801556826	Sum of GTIs [s]
ontime1	4430.4269054532	Sum of GTIs [s]
ontime2	4145.2606079876	Sum of GTIs [s]
ontime3	4145.8533989191	Sum of GTIs [s]
ontime6	4560.1249206364	Sum of GTIs [s]
ontime7	7795.1999709606	Sum of GTIs [s]
l2events	1180149	Number of level 2 events

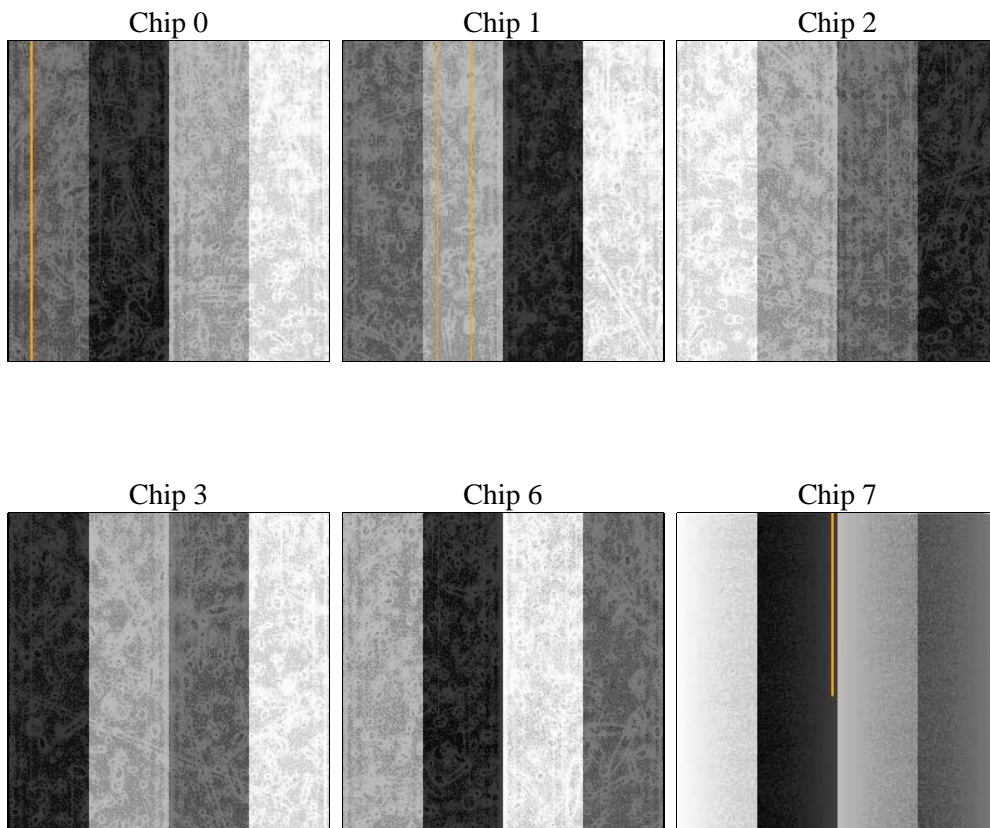
2 OBI

2.1 OBI

2.1.1 Images



2.1.2 Bias



2.1.3 Parameters

obi_num	1	Obi number	sched_exp_time	0.0	[s] Scheduled observation exposure time
ascdsver	8.4.5	Processing system revision	ontime	7795.1999709606	Sum of GTIs [s]
caldsver	4.5.2	 	ontime0	4342.8801556826	Sum of GTIs [s]
date	2012-10-27T02:06:01	Date and time of file creation	ontime1	4430.4269054532	Sum of GTIs [s]
revision	3	Processing version of data	ontime2	4145.2606079876	Sum of GTIs [s]
			ontime3	4145.8533989191	Sum of GTIs [s]
			ontime6	4560.1249206364	Sum of GTIs [s]
			ontime7	7795.1999709606	Sum of GTIs [s]
			l1events	1426183	Number of level 1 events

2.1.4 Events

	ccd 0	ccd 1	ccd 2	ccd 3	ccd 6	ccd 7		ccd 0	ccd 1	ccd 2	ccd 3	ccd 6	ccd 7
level 1 events	207109	209787	199706	200924	228208	380449	grade 0 events	97887	99468	95291	95712	106504	85452
rejected events	29530	29091	29193	30300	31498	42032		47%	47%	47%	47%	46%	22%
rejected %	14%	13%	14%	15%	13%	11%	grade 1 events	567	446	577	577	524	227
								0%	0%	0%	0%	0%	0%
							grade 2 events	30728	31593	28866	29058	33833	74188
								14%	15%	14%	14%	14%	19%
							grade 3 events	11418	11627	11095	11102	12220	34321
								5%	5%	5%	5%	5%	9%
							grade 4 events	11409	11468	11085	11025	12250	33688
								5%	5%	5%	5%	5%	8%
							grade 5 events	1955	2017	1822	2016	2220	7910
								0%	0%	0%	1%	0%	2%
							grade 6 events	26137	26540	24176	23863	31903	110916
								12%	12%	12%	11%	13%	29%
							grade 7 events	27008	26628	26794	27571	28754	33747
								13%	12%	13%	13%	12%	8%

2.2 Compared Parameters

Parameter	Planned	Actual
Instrument	ACIS	ACIS
Detector	ACIS-012367	ACIS-012367
Grating	NONE	NONE
Data mode	FAINT	FAINT
Observation mode	SECONDARY	SECONDARY
[deg] Pointing RA	0	228.035512602607
[deg] Pointing Dec	0	-58.97802005995976
[deg] Pointing Roll	0.0	17.33145400336146
[mm] SIM focus pos	-0.782348	-0.7809083437167272
[mm] SIM defocus	0	0.7524282956875696
[mm] SIM translation stage pos	-233.592463	250.4635187648994
[mm] SIM translation stage offset	0	-0.007540371344731511
[s] Observation start time (MET)	167909374.16857	167909373.14386
Observation start date	2003-04-28T09:29:34	2003-04-28T09:29:33
[s] Observation end time (MET)	167920554.869043	167920553.84433
Observation end date	2003-04-28T12:35:55	2003-04-28T12:35:53
Read mode	TIMED	TIMED

Parameter	Planned	Actual
Obspar format version number	7	7
Obspar file type	PREDICTED	ACTUAL
Obspar update status	NONE	UPDATED
On-chip summing requested	N	N
Subarray requested	NONE	NONE
Alternating exposures requested	N	N
[s] Primary exposure time	0.000000	3.2

2.3 Star Slots

2.4 FID Slots

A Summary

A.1 Status

V&V Scientist	Beth Sundheim
V&V Date (YYYY-MM-DD)	2012.12.06
V&V Edition	1
V&V Disposition and Status	OK
V&V Charge Time	7.7951999709606

A.2 Comments